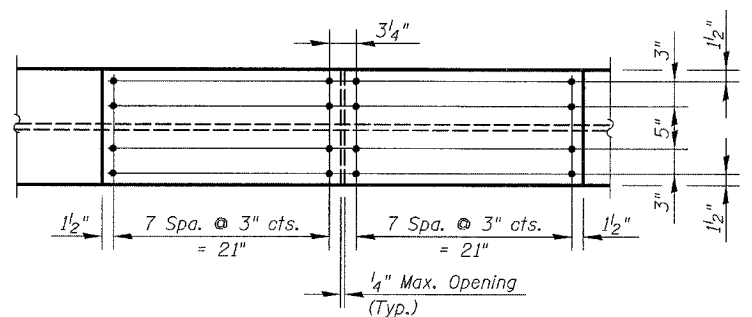
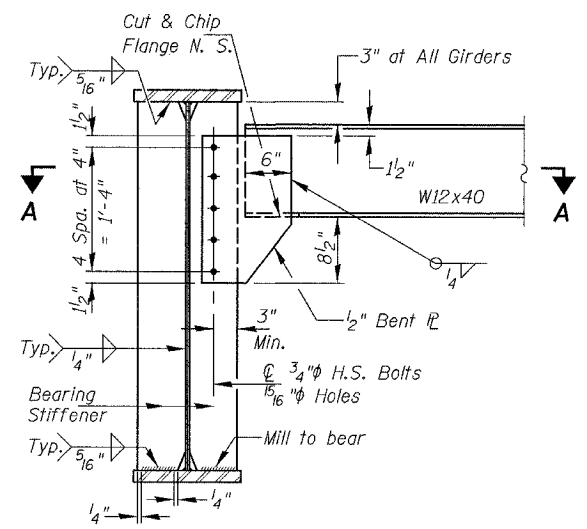


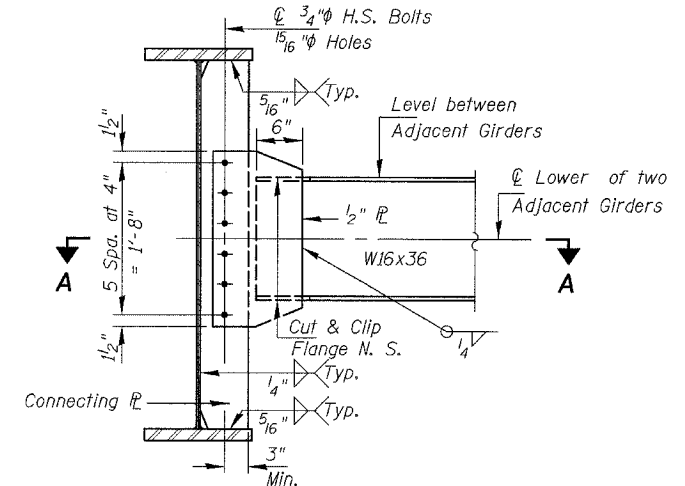
TOP FLANGE



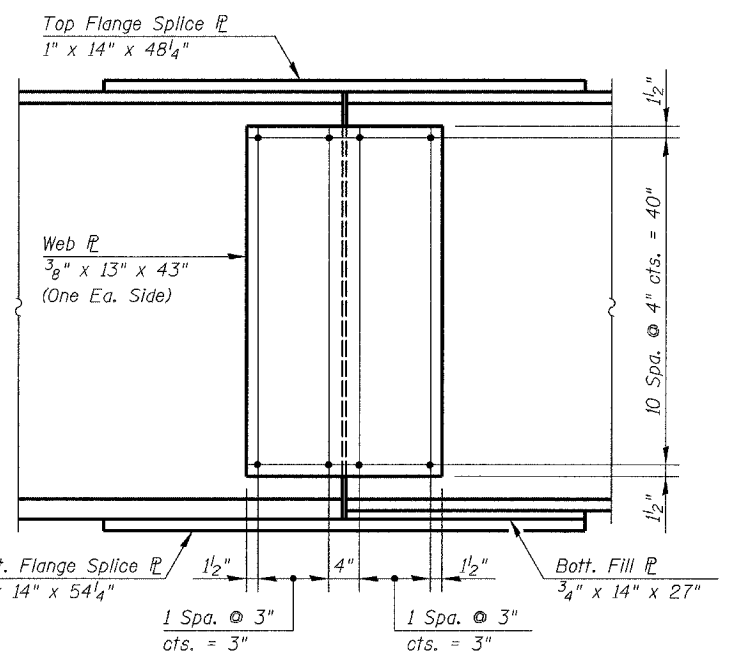
TOP FLANGE



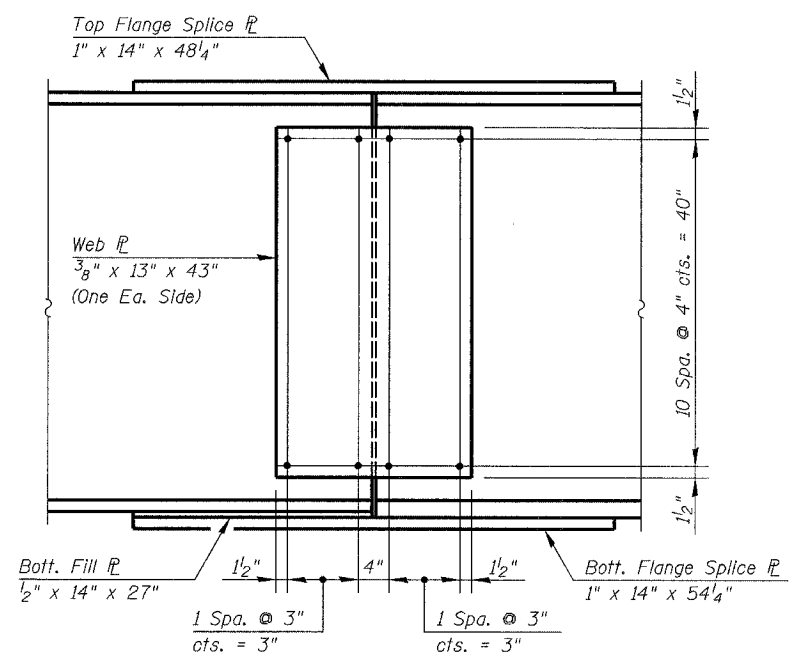
END DIAPHRAGM D1
22 Required



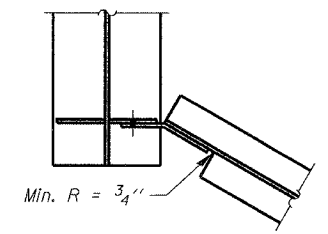
INTERIOR DIAPHRAGM D2
121 Required



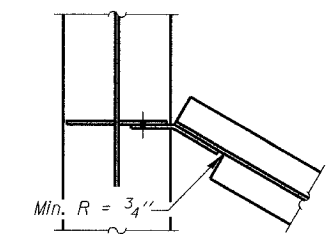
ELEVATION



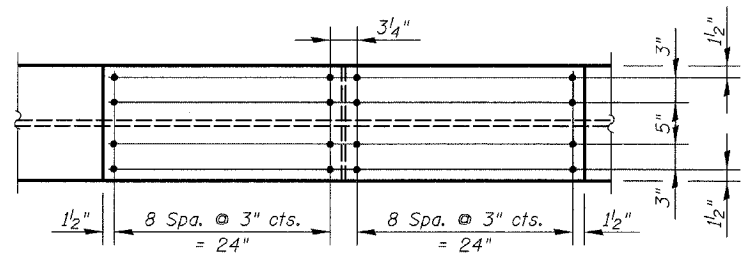
ELEVATION



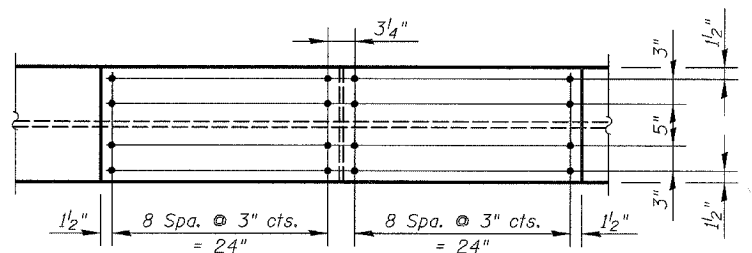
SECTION A-A



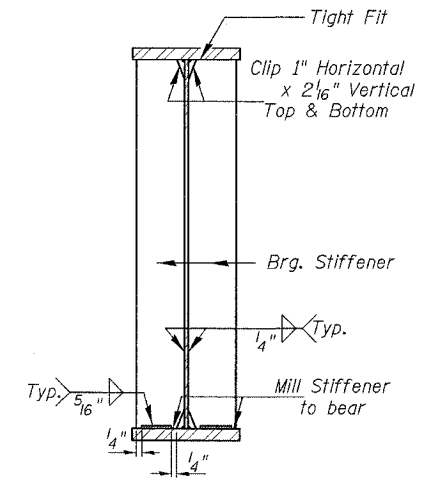
SECTION A-A



BOTTOM FLANGE
DETAIL OF SPLICE - FS1



BOTTOM FLANGE
DETAIL OF SPLICE - FS2



BEARING STIFFENER

NOTES:
All girders and splice plate material shall be AASHTO M 270 Grade 50. All materials for splice plates, except fill plates, shall meet Notch Toughness Requirements.
All diaphragms shall be AASHTO M 270 Grade 36.
All splice bolts shall be 7/8 inch High Strength Bolts. All splice holes shall be 5/16 inch holes.
Work this DWG. with DWGS. S-19 & S-20.

REVISIONS		ILLINOIS DEPARTMENT OF TRANSPORTATION FIELD SPLICE & DIAPHRAGM DETAILS 76TH STREET OVER FAI-94 FAP ROUTE 1541 SECTION 1818 R-9 COOK COUNTY STATION 73+49.33 STRUCTURE NUMBER 016-2850
NAME	DATE	
		SCALE: NONE DESIGNED BY: TB DRAWN BY: TL DATE: March 25, 2005 CHECKED BY: WPM CHECKED BY: WPM

FILE: L:\6592.02\Coord\Shiners\Roadway_Structures\Bridges\6592-52650-BM03.dgn