

F.A.I. RTE.	SECTION	COUNTY	TOTAL SHEETS	SHEET NO.
94	*	COOK	903	693
STA.		TO STA.		
FED. ROAD DIST. NO.	ILLINOIS	FED. AID PROJECT		
* (1516.1, 1717 & 1818) R-9		62695		



**BEARING SEAT ELEVATIONS**

GIRDER	BRG. SEAT ELEVATION	STEP T- inch
G1	5.29	1 7/8"
G2	5.45	1 7/8"
G3	5.61	1 7/8"
G4	5.76	1 7/8"
G5	5.92	1 7/8"
G6	6.07	1 7/8"
G7	6.20	1 1/2"
G8	6.20	0
G9	6.14	3/4"
G10	6.01	1 1/2"
G11	5.88	1 5/8"
G12	5.75	1 1/2"

**TOP OF BACK WALL ELEVATIONS**

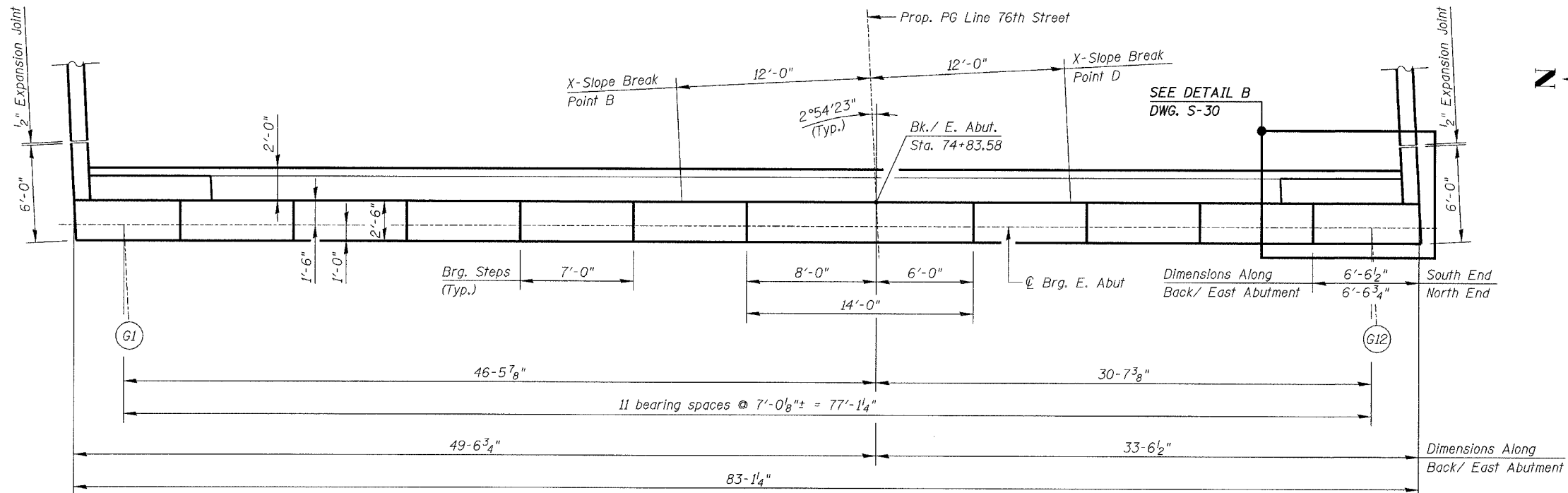
POINTS	FRONT FACE	BACK FACE
A - North Curb Line	10.60	10.56
B - X-Slope Break	11.25	11.21
C - Crown	11.46	11.41
D - X-Slope Break	11.29	11.24
E - South Curb Line	11.04	10.99

**Notes:**  
 Space reinforcement in cap to miss anchor bolts.  
 Pour steps monolithically with cap.  
 Reinforcement Bars designated (E) shall be epoxy coated.  
 Bars indicated thus 20x3-#5 etc. indicates 20 lines of bars with 3 lengths per line.  
 Cost of conduit sleeves in backwall included with "Concrete Structures".  
 Estimated Soil Bearing Pressure = 5 ksf.  
 Work this DWG. with DWGS. S-29 thru S-32.

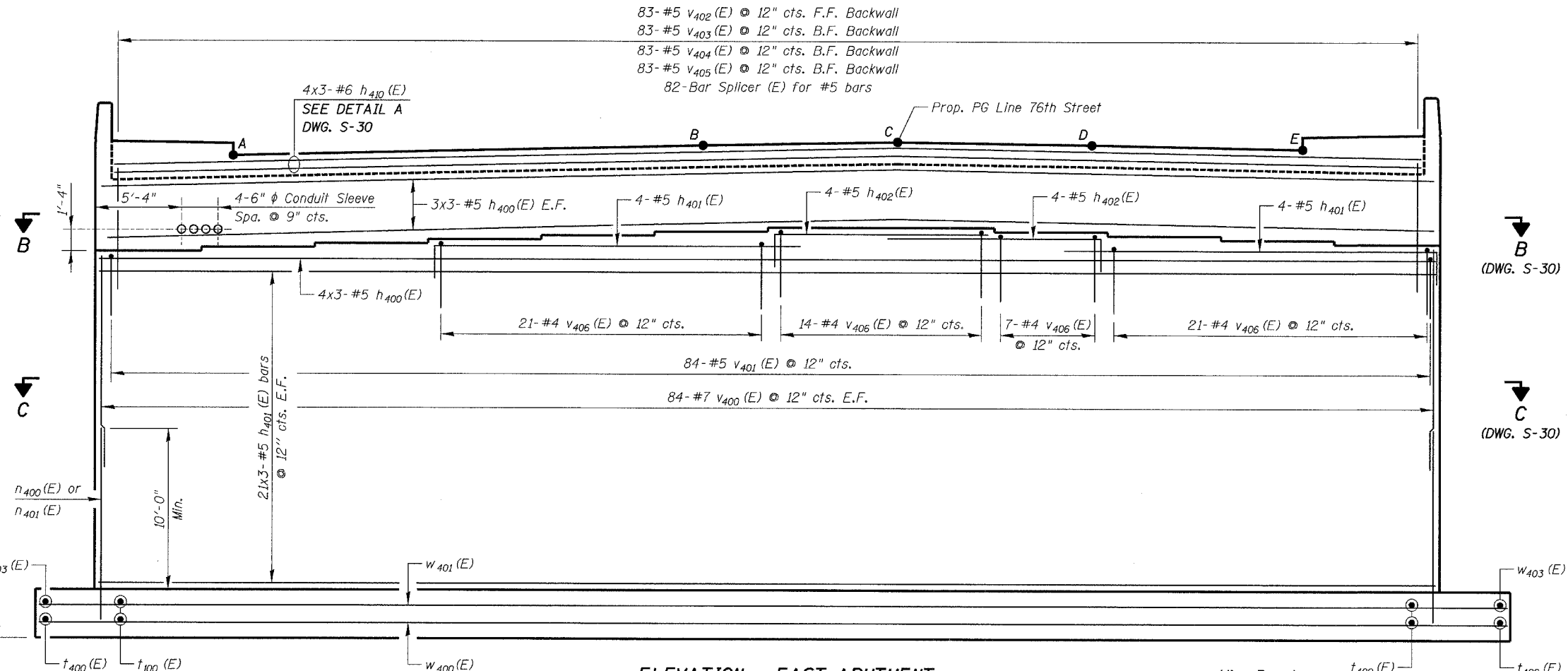
DWG. S-28 of 42

ILLINOIS DEPARTMENT OF TRANSPORTATION  
**EAST ABUTMENT TOP PLAN & ELEVATION**  
 76TH STREET OVER FAI-94  
 FAP ROUTE 1541 SECTION 1818 R-9  
 COOK COUNTY  
 STATION 73+49.33  
 STRUCTURE NUMBER 016-2850  
 SCALE: NONE DESIGNED BY: TB DRAWN BY: TL  
 DATE: March 25, 2005 CHECKED BY: WPM CHECKED BY: WPM

REVISIONS	
NAME	DATE



**TOP PLAN - EAST ABUTMENT**



**ELEVATION - EAST ABUTMENT**

**Legend**  
 E.F. = Each Face #5 = 1'-8" #5 = 2'-5"  
 F.F. = Front Face #6 = 2'-0" #6 = 2'-10"  
 B.F. = Back Face #7 = 2'-9"

**Min. Bar Laps:** t400(E)

**Vert./Horiz. Bars** Horiz. Top Bars

FILE: L:\16592.02\Cad\USheets\Roadway Structures\Bridges\6592-S2850-ABE01.dgn

