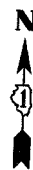
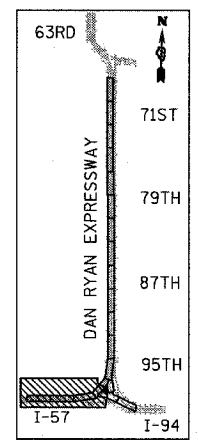
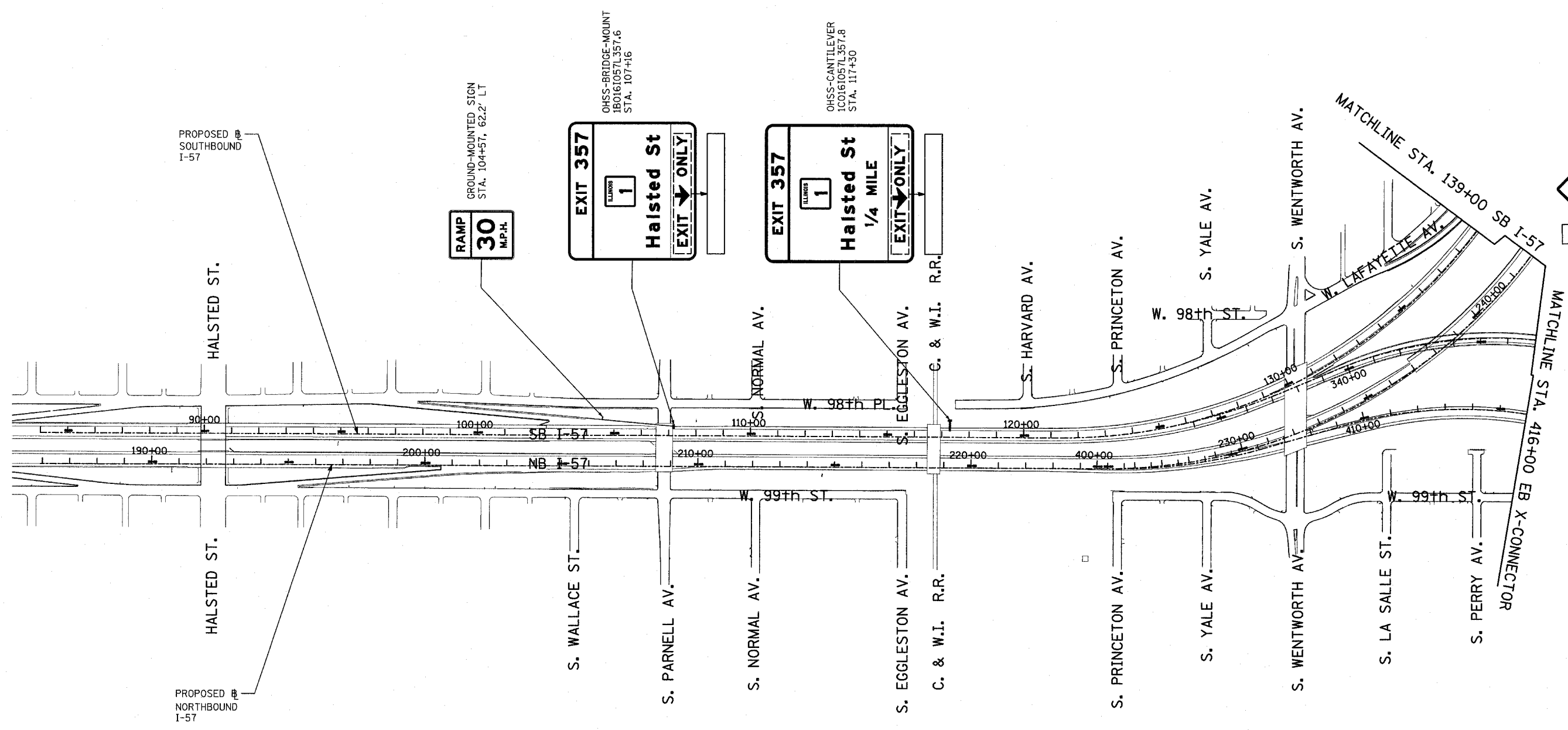


F.A.I. RTE.	SECTION	COUNTY	TOTAL SHEETS	SHEET NO.
94	*	COOK	907	733
STA. 1200+00.00		TO STA. 1365+00		
FED. ROAD DIST. NO.	ILLINOIS	FED. AID PROJECT		
• (1516.1, 1717 & 1818) R-9				62695



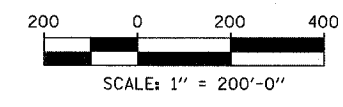
SIGNING LEGEND:

- PROPOSED GROUND MOUNTED SIGN
- PROPOSED OVERHEAD SIGN STRUCTURE -TRUSS
- PROPOSED OVERHEAD SIGN STRUCTURE-BRIDGE MOUNTED
- PROPOSED OVERHEAD SIGN STRUCTURE-CANTILEVER
- PROPOSED SIGN
- OVERLAY SIGN PANEL



LOCATION MAP

TYLIN INTERNATIONAL



REVISIONS	
NAME	DATE

ILLINOIS DEPARTMENT OF TRANSPORTATION
F.A.I. 94 (DAN RYAN EXPRESSWAY)

PROPOSED SIGNING
STA. 94+00 TO STA 138+00
SHEET 1 OF 6

SCALE: 1" = 200'
DATE: MARCH 25, 2005

DRAWN BY: AMB
CHECKED BY: TGB

3/30/2005 12:44:54 PM