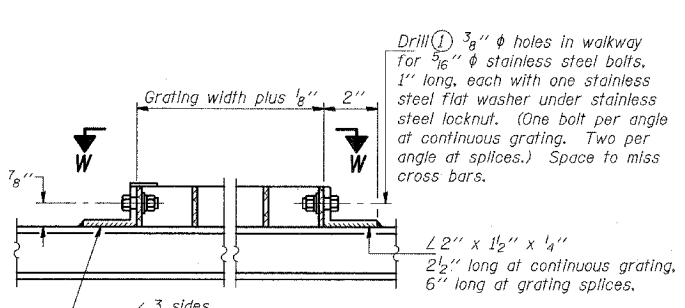
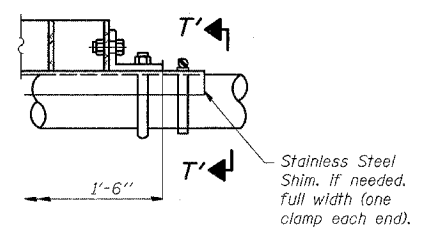


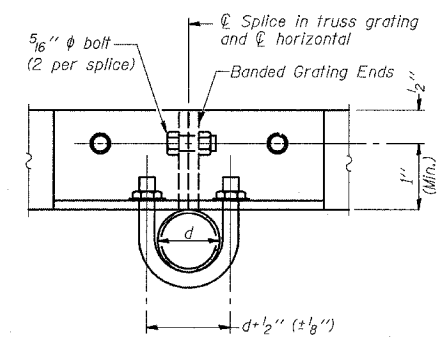
STATE OF ILLINOIS
DEPARTMENT OF TRANSPORTATION



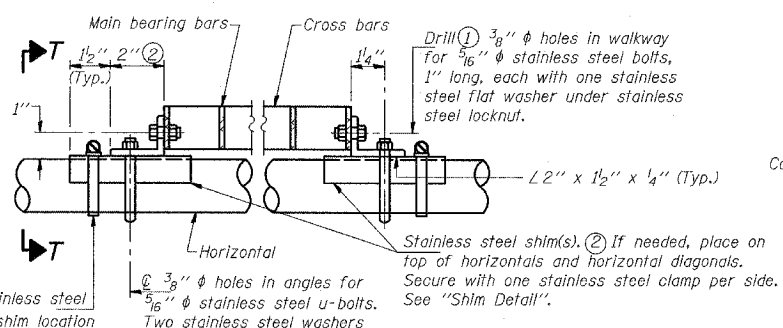
DETAIL W
(Walkway grating)



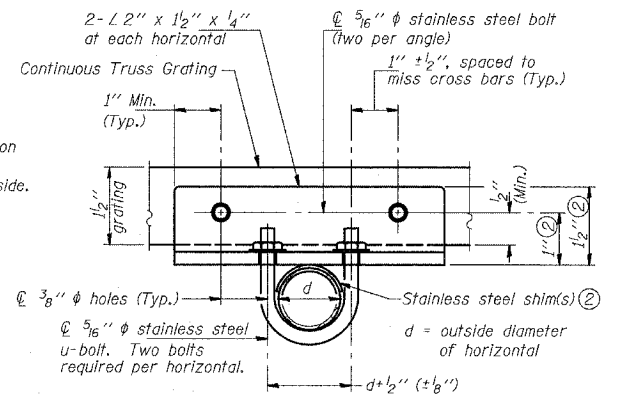
DETAIL T'
(Truss grating splice)
Details not shown same as Detail T.
Alternate materials may be used subject to the Engineer's review and approval.



SECTION T'-T'



DETAIL T
(Continuous Truss grating)



SECTION T-T

* Bracket and grating dimensions are nominal and will vary based on actual DMS cabinet dimensions plus manufacturer's mounting devices, and providing clearance between the lowered handrail and DMS cabinet.

Screw type stainless steel tube clamp at shim location
Horizontal
Drill 3/8" holes in angles for 5/16" stainless steel u-bolts. Two stainless steel washers and nuts required per bolt. U-bolt and angle connections required at horizontals only.

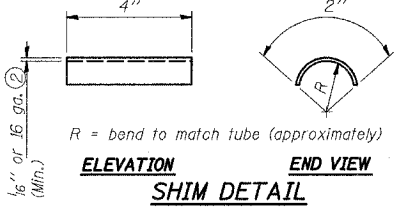
SPECIFICATIONS FOR STANDARD ALUMINUM GRATING

Main Bearing Bars shall be 3/16" x 1 1/2" on 1 3/16" centers and conform to ASTM B211 Alloy 6061-T6.
Cross bars shall be 3/16" x 1 1/2" on 4" centers and conform to ASTM B221 Alloy 6063-T5 or 6061-T6.

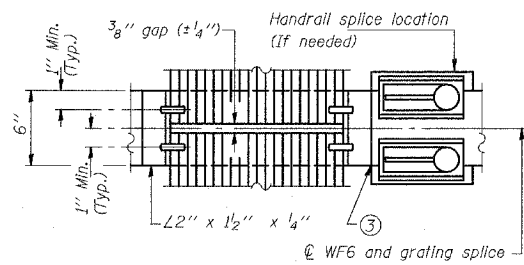
OR

Aluminum Grating with modified "T" sections for main bearing bars shall meet the following requirements:
Main bars shall conform to ASTM B221 Alloy 6061-T6 and have a minimum section modulus equal to 0.0705 in.³ per bar, a depth of 1 1/2", spaced on 1 3/16" centers.
Cross bars shall conform to ASTM B221 Alloy 6063-T5 or T-42 and spaced on 4" centers.

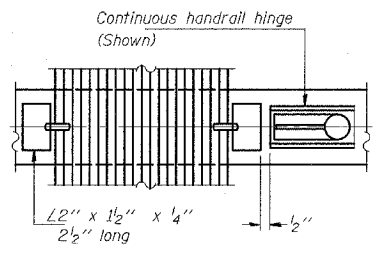
- Drilling holes in grating may be done in shop or field, based on Contractor's preference and subject to accurate alignment.
- Stainless steel shims shall be placed as shown in Detail T if needed to compensate for alignment variations between horizontal and diagonal pipes beyond adjustment provided by angles. Thicker shims may be used subject to shims performing properly.
- If Handrail Joint present, weld angle to WF6 and 1/4" extension bars. (See Base Sheet OS-A-11-DMS2.)
- 1/8" x 1/2" x 2" welded to handrail posts to protect locations that contact grating.



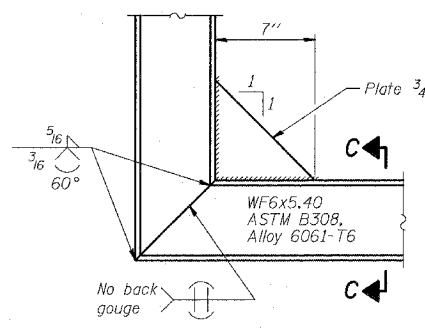
SHIM DETAIL



(AT WALKWAY GRATING SPLICE)

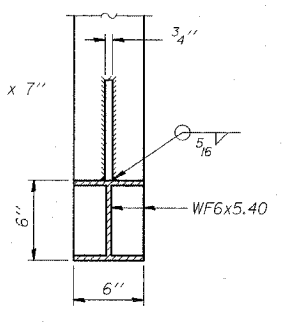


(CONTINUOUS WALKWAY GRATING)



DETAIL C

(See Detail P, Base Sheet OS-A-11-DMS2.)



SECTION C-C

SECTION W-W

DESIGNED	
CHECKED	
DRAWN	
CHECKED	

EXAMINED	19
PASSED	ENGINEER OF STRUCTURAL SERVICES
	ENGINEER OF BRIDGES AND STRUCTURES

NUMBER	REVISION	DATE

Structure Number	Station	A	B	C	D
ISO161094R061.3	1286+85	7 1/2"	1'-5"	7'-0"	8'-11"

OS-A-10-DMS2 7/1/2001

REVISIONS	
NAME	DATE

ILLINOIS DEPARTMENT OF TRANSPORTATION
F.A.I. 94 (DAN RYAN EXPRESSWAY)
OVERHEAD SIGN STRUCTURES
ALTERNATE ALUMINUM WALKWAY DETAILS
SCALE: AS NOTED
DATE: MARCH 25, 2005
DRAWN BY: AMB
CHECKED BY: TB