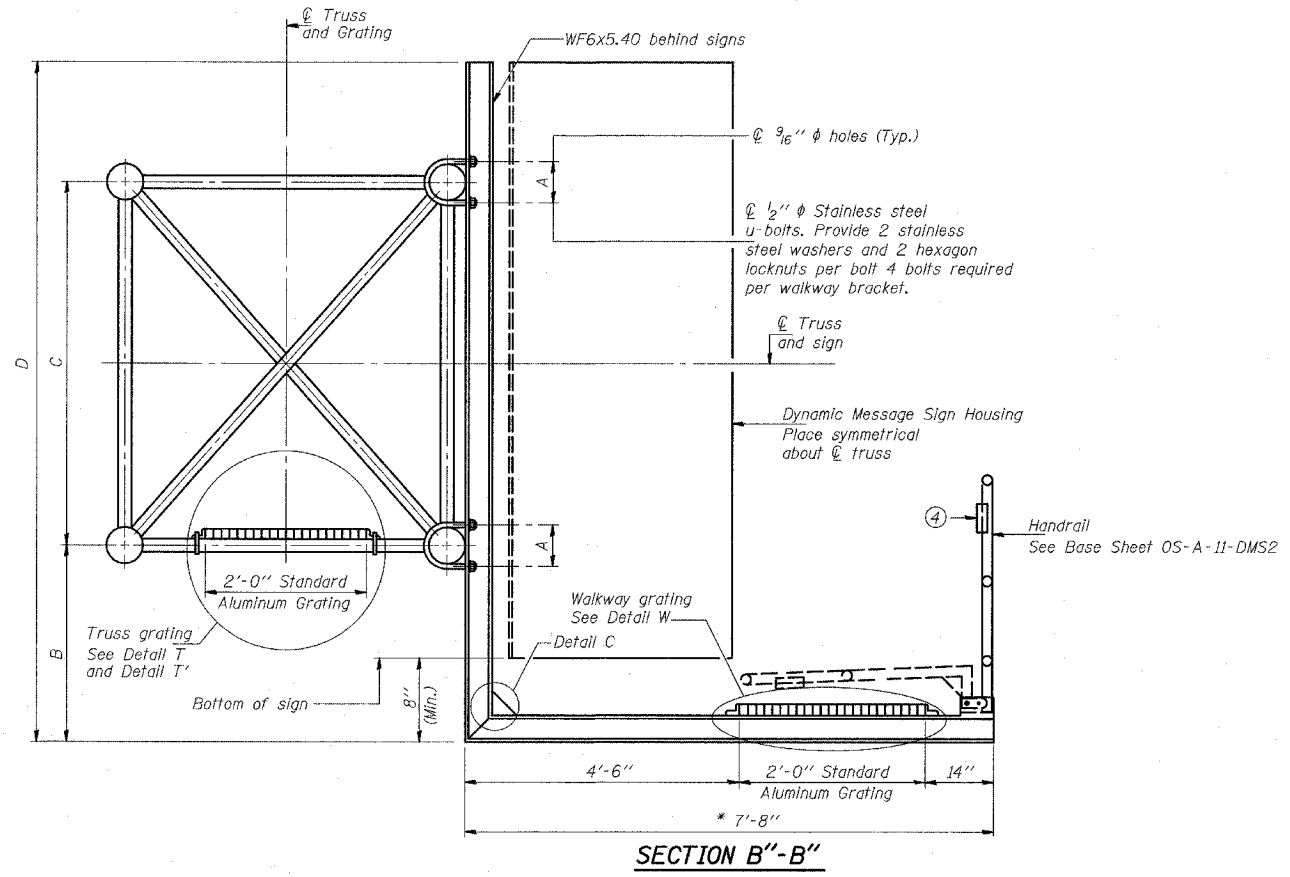
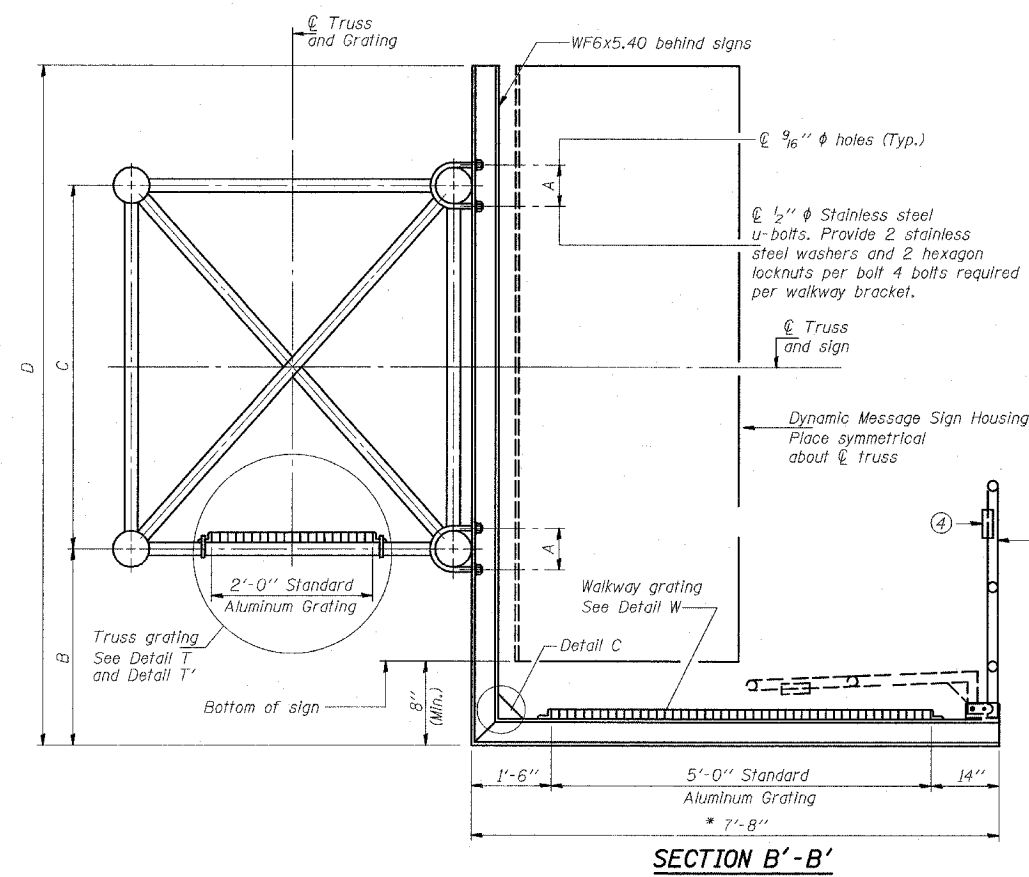


| | | | | |
|-----------------------------|----------|------------------|--------------|-----------|
| F.A.I. RTE. | SECTION | COUNTY | TOTAL SHEETS | SHEET NO. |
| 94 | * | COOK | 907 | 772 |
| STA. 1200+00.00 | | TO STA. 1365+00 | | |
| FED. ROAD DIST. NO. | ILLINOIS | FED. AID PROJECT | | |
| • (1516.1, 1717 & 1818) R-9 | | | | 62695 |

STATE OF ILLINOIS
DEPARTMENT OF TRANSPORTATION



* Bracket and grating dimensions are nominal and will vary based on actual DMS cabinet dimensions plus manufacturer's mounting devices, and providing clearance between the lowered handrail and DMS cabinet.

Note:
For dimensions "A" to "D" and remaining details, see sheet OS-A-10-DMS2

| | |
|----------|----------|
| DESIGNED | 19 |
| CHECKED | EXAMINED |
| DRAWN | PASSED |
| CHECKED | |

OS-A-10a-DMS2 7/1/2001

| NUMBER | REVISION | DATE |
|--------|----------|------|
| | | |
| | | |
| | | |
| | | |
| | | |

TYLIN INTERNATIONAL

| REVISIONS | |
|-----------|------|
| NAME | DATE |
| | |
| | |
| | |
| | |
| | |
| | |
| | |
| | |
| | |
| | |

ILLINOIS DEPARTMENT OF TRANSPORTATION
F.A.I. 94 (DAN RYAN EXPRESSWAY)

OVERHEAD SIGN STRUCTURES
ALTERNATE ALUMINUM WALKWAY DETAILS

SCALE: AS NOTED
DATE: MARCH 25, 2005
DRAWN BY: AMB
CHECKED BY: TB