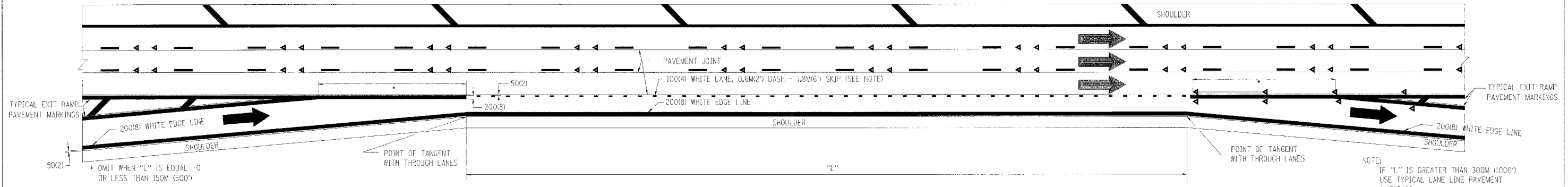
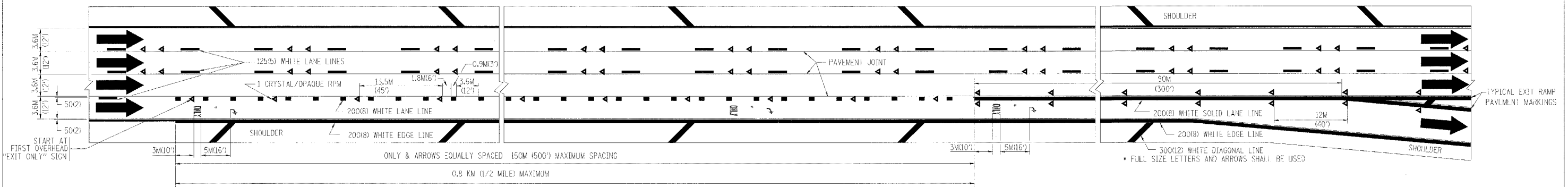


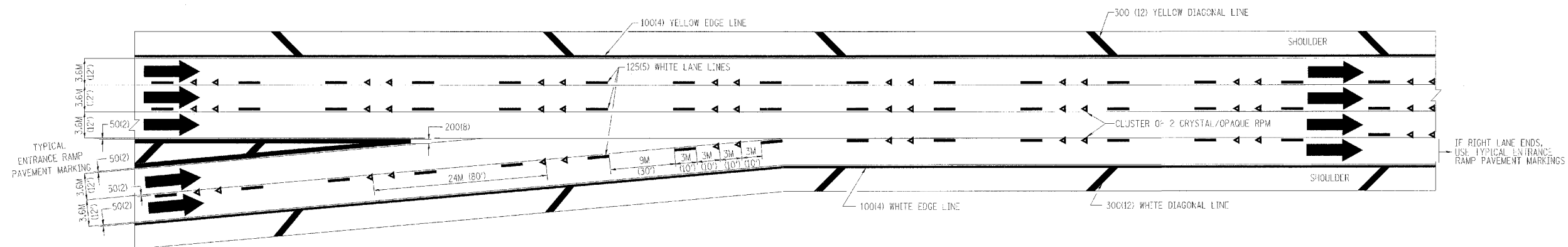
F.A. NO.	SECTION	COUNTY	TOTAL SHEETS	SHEET NO.
			907	809
STA.	TO STA.			
FED. ROAD DIST. NO. 7	ILLINOIS	FED. AID PROJECT		



TYPICAL ENTRANCE/EXIT RAMP COMBINATION PAVEMENT MARKINGS



TYPICAL EXIT ONLY LANE PAVEMENT MARKINGS



TYPICAL TWO LANE ENTRANCE RAMP PAVEMENT MARKINGS

REVISIONS	
NAME	DATE
DWS	1/90
DWS	5/91

ILLINOIS DEPARTMENT OF TRANSPORTATION

MULTI-LANE FREEWAY PAVEMENT MARKING DETAILS

SCALE: NONE
DATE: 10/18/2002

DRAWN BY C.A.D.D.
CHECKED BY
TC12 SHEET 2 OF 2
REVISION DATE: 01/01/96

DATE-TIME
DCM-SPEC
VTC12