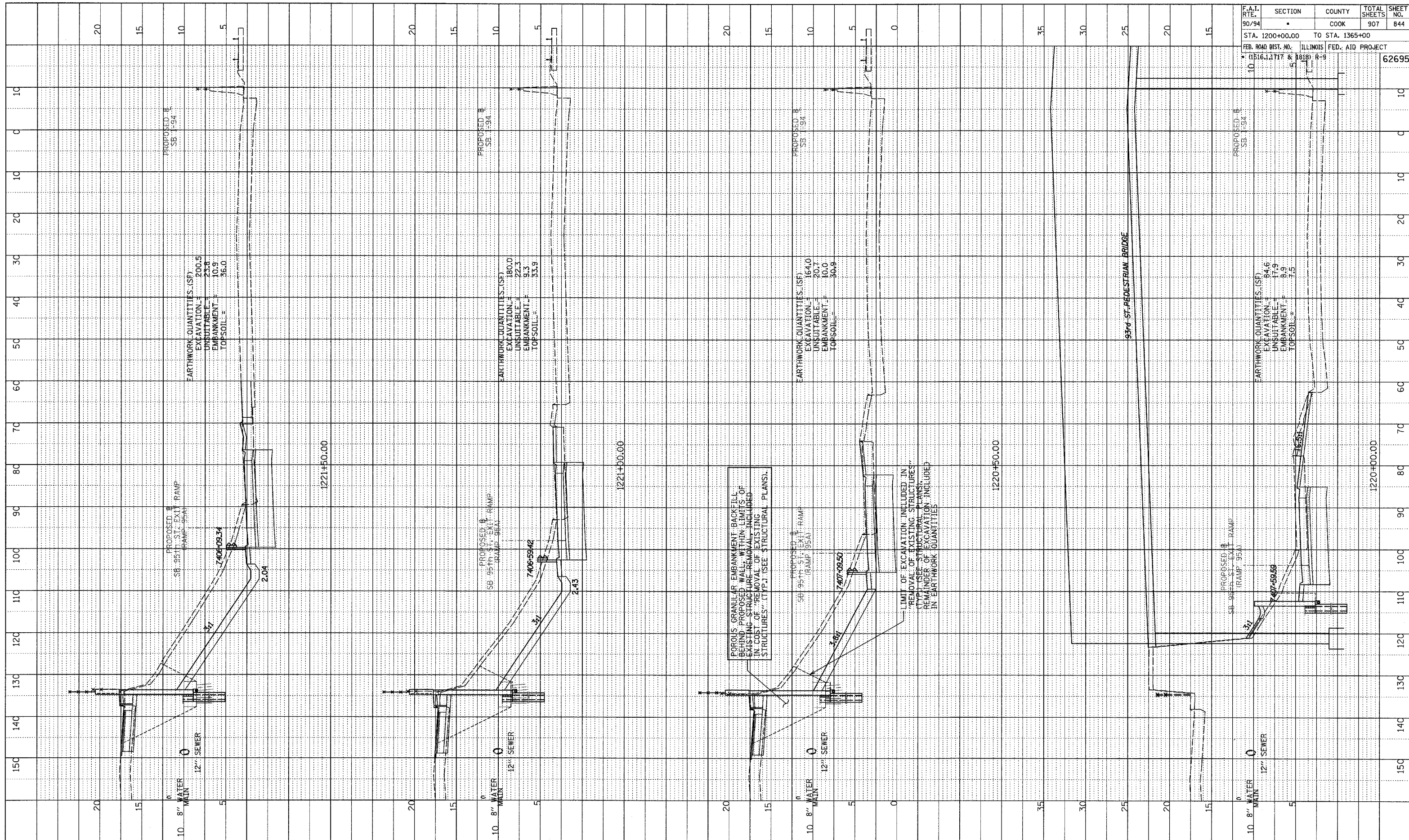


PROFILE SHOWN GRADES CHECKED
 NOTE BOOK NO. _____
 STRUCTURE NOTATIONS CHFD

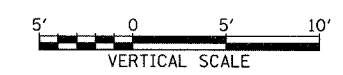
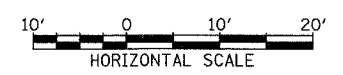
F.A.I. RTE. 90/94	SECTION	COUNTY COOK	TOTAL SHEETS 907	SHEET NO. 844
STA. 1200+00.00 TO STA. 1365+00		ILLINOIS FED. AID PROJECT		
FEB. ROAD DIST. NO. (1516.1, 1717 & 1818) R-9		62695		



POROUS GRANULAR EMBANKMENT BACKFILL BEHIND PROPOSED WALL. WITHIN LIMITS OF EXISTING STRUCTURE REMOVAL INCLUDED IN COST OF REMOVAL OF EXISTING STRUCTURES. (TYP.) (SEE STRUCTURAL PLANS).

LIMIT OF EXCAVATION INCLUDED IN "REMOVAL OF EXISTING STRUCTURES" (TYP.) (SEE STRUCTURAL PLANS). REMAINDER OF EXCAVATION INCLUDED IN EARTHWORK QUANTITIES.

TYLIN INTERNATIONAL



SB 95th ST. EXIT RAMP
 STA. 1220+00 TO STA. 1221+50