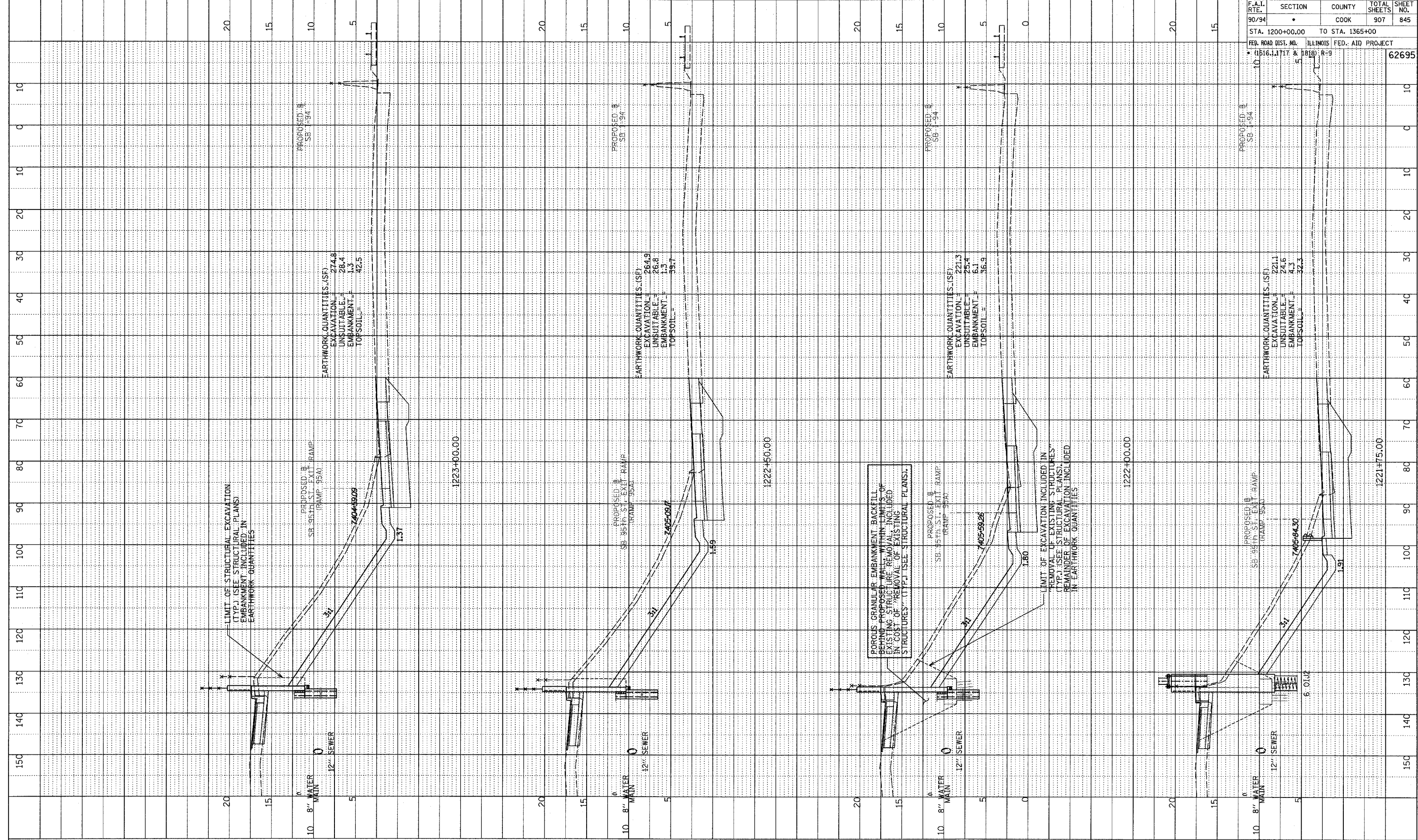


PROFILE SURVEYED  
 PLOTTED  
 NOTE BOOK  
 NO. \_\_\_\_\_  
 STRUCTURE NOTATIONS CHFD

F.A.I. RTE.	SECTION	COUNTY	TOTAL SHEETS	SHEET NO.
90/94		COOK	907	845
STA. 1200+00.00 TO STA. 1365+00				
FEA. ROAD DIST. NO. ILLINOIS FED. AID PROJECT				
• (1516.1, 1717 & 1818) R-9				
				62695



LIMIT OF STRUCTURAL EXCAVATION  
 (TYP.) (SEE STRUCTURAL PLANS)  
 EMBANKMENT INCLUDED IN  
 EARTHWORK QUANTITIES

PROPOSED SB 95th ST. EXIT RAMP  
 (RAMP 95A)

EARTHWORK QUANTITIES (SF)  
 EXCAVATION = 274.8  
 UNSUITABLE = 28.4  
 EMBANKMENT = 1.3  
 TOP SOIL = 42.5

PROPOSED SB 95th ST. EXIT RAMP  
 (RAMP 95A)

EARTHWORK QUANTITIES (SF)  
 EXCAVATION = 264.9  
 UNSUITABLE = 26.8  
 EMBANKMENT = 1.3  
 TOP SOIL = 39.7

POROUS GRANULAR EMBANKMENT BACKFILL  
 BEHIND PROPOSED WALL WITHIN LIMITS OF  
 EXISTING STRUCTURE REMOVAL, INCLUDED  
 IN COST OF "REMOVAL OF EXISTING  
 STRUCTURES" (TYP.) (SEE STRUCTURAL PLANS).

PROPOSED SB 95th ST. EXIT RAMP  
 (RAMP 95A)

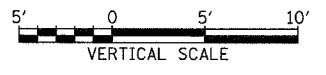
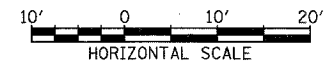
EARTHWORK QUANTITIES (SF)  
 EXCAVATION = 221.3  
 UNSUITABLE = 25.4  
 EMBANKMENT = 6.1  
 TOP SOIL = 36.9

LIMIT OF EXCAVATION INCLUDED IN  
 "REMOVAL OF EXISTING STRUCTURES"  
 (TYP.) (SEE STRUCTURAL PLANS)  
 REMAINDER OF EXCAVATION INCLUDED  
 IN EARTHWORK QUANTITIES

PROPOSED SB 95th ST. EXIT RAMP  
 (RAMP 95A)

EARTHWORK QUANTITIES (SF)  
 EXCAVATION = 221.1  
 UNSUITABLE = 24.6  
 EMBANKMENT = 4.3  
 TOP SOIL = 32.3

TYLIN INTERNATIONAL



SB 95th ST. EXIT RAMP  
 STA. 1221+75 TO STA. 1223+00

PA:02373\road\717\B\K\T\B\SS\95A-F.dwg