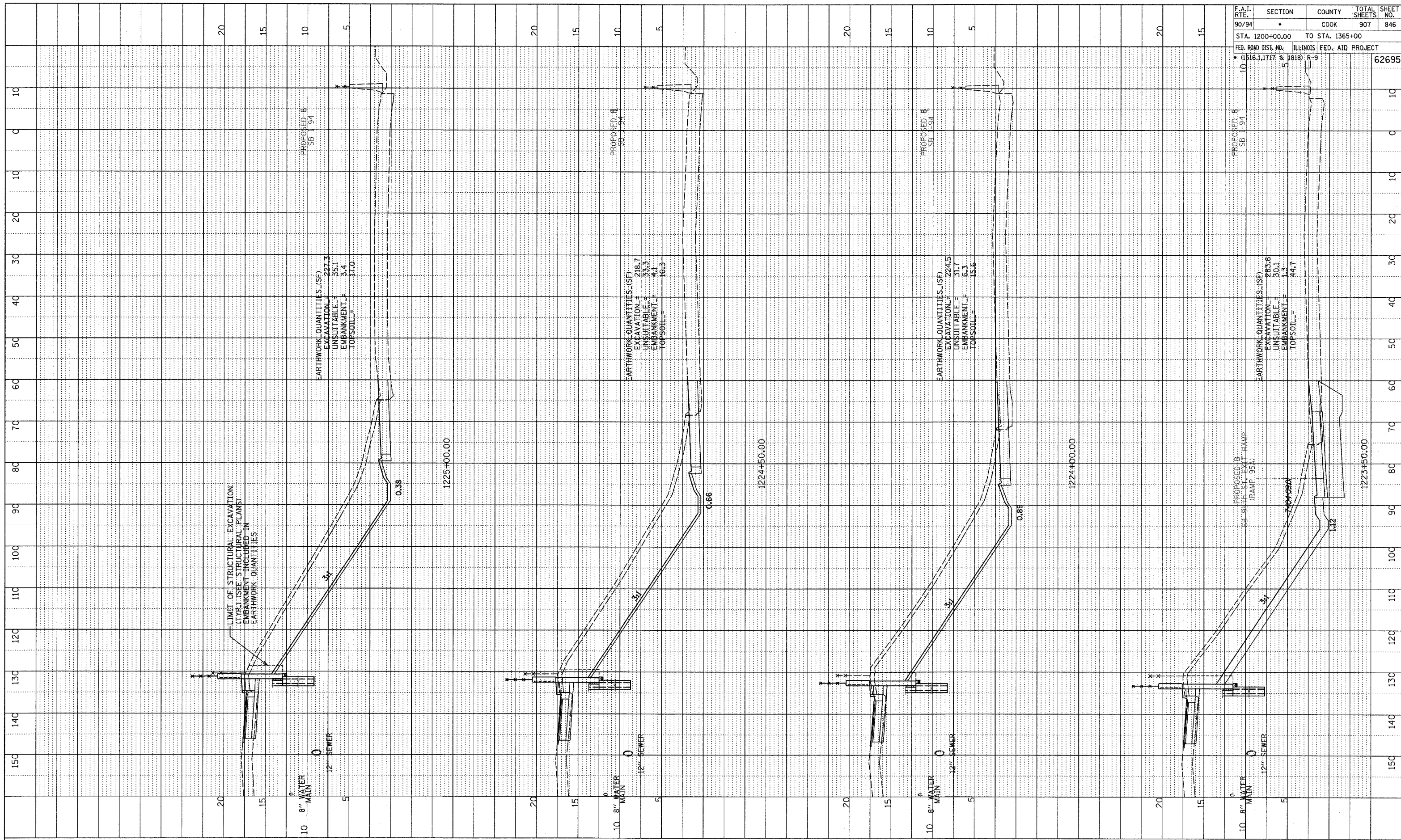
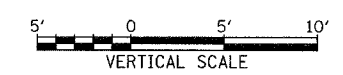
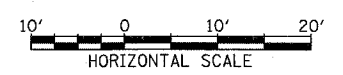


NOTE BOOK  
 GRADES CHECKED  
 STRUCTURE NOTATIONS OK'D



F.A.I. RTE.	SECTION	COUNTY	TOTAL SHEETS	SHEET NO.
90/94		COOK	907	846
STA. 1200+00.00 TO STA. 1365+00		ILLINOIS FED. AID PROJECT		
FEB. ROAD DIST. NO. (1516.1, 1717 & 1818) R-9		62695		

TYLIN INTERNATIONAL



SB 95th ST. EXIT RAMP  
 STA. 1223+50 TO STA. 1225+00