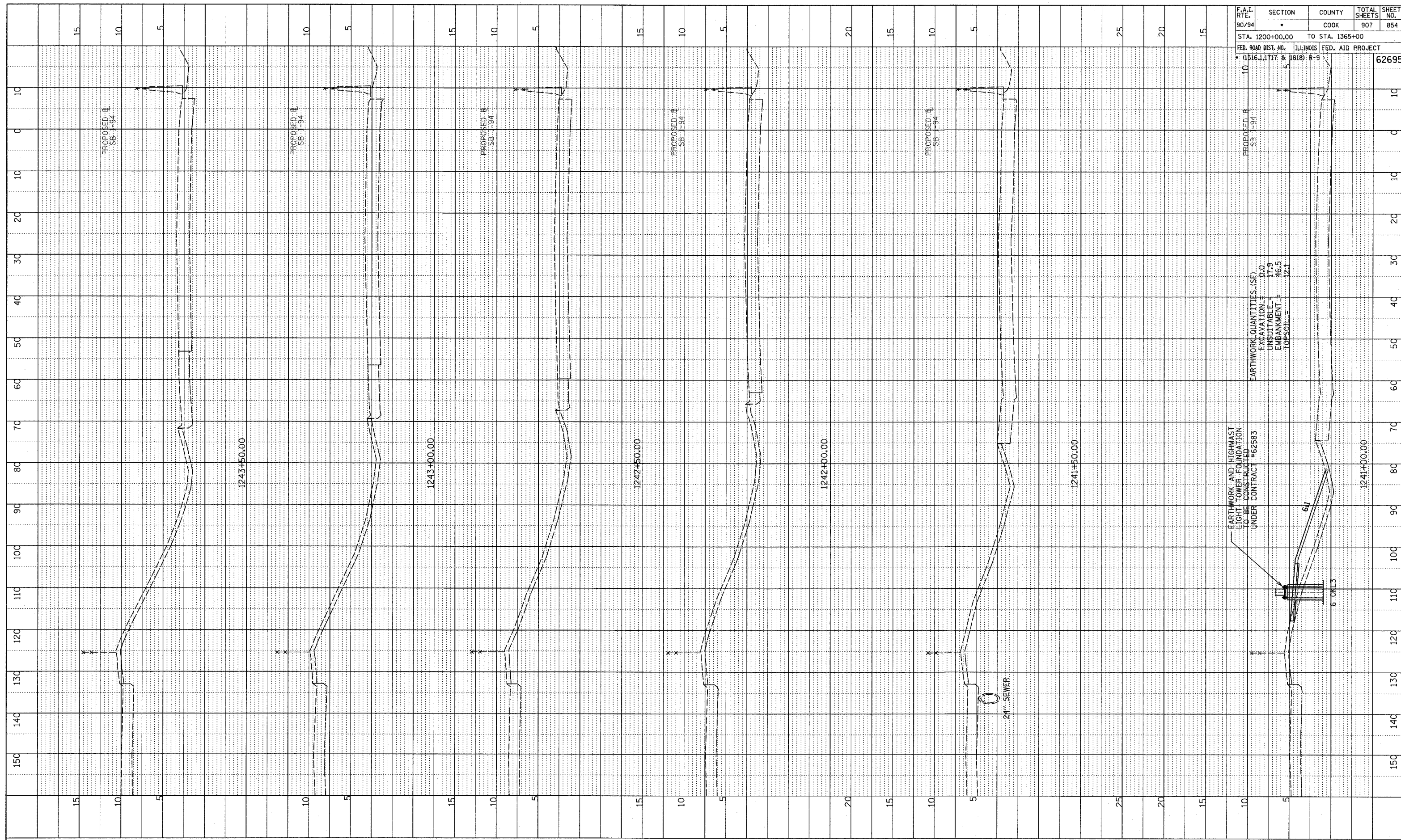


PROF. ILL. SUBMITTED
 GRADES CHECKED
 E.M. NOTED
 NO. 10
 SIGNATURE NOTATIONS CHAD

F.A.I. RTE.	SECTION	COUNTY	TOTAL SHEETS	SHEET NO.
90/94		COOK	907	854
STA. 1200+00.00		TO STA. 1365+00		
FED. ROAD DIST. NO.		ILLINOIS	FED. AID PROJECT	
1516.1, 1717 & 1818		R-9		62695



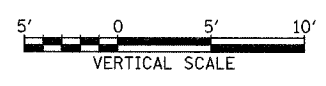
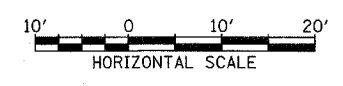
EARTHWORK QUANTITIES (SF)
 EXCAVATION = 0.0
 UNSUITABLE = 17.9
 EMBANKMENT = 46.5
 TOP SOIL = 12.1

EARTHWORK AND HIGHMAST LIGHT TOWER FOUNDATION TO BE CONSTRUCTED UNDER CONTRACT #62683

24" SEWER

6.00x3

TYLIN INTERNATIONAL



SB 87th ST. ENTRANCE RAMP
 STA. 1241+00 TO STA. 1243+50

A:\0237\3\road\87\87\87.dwg