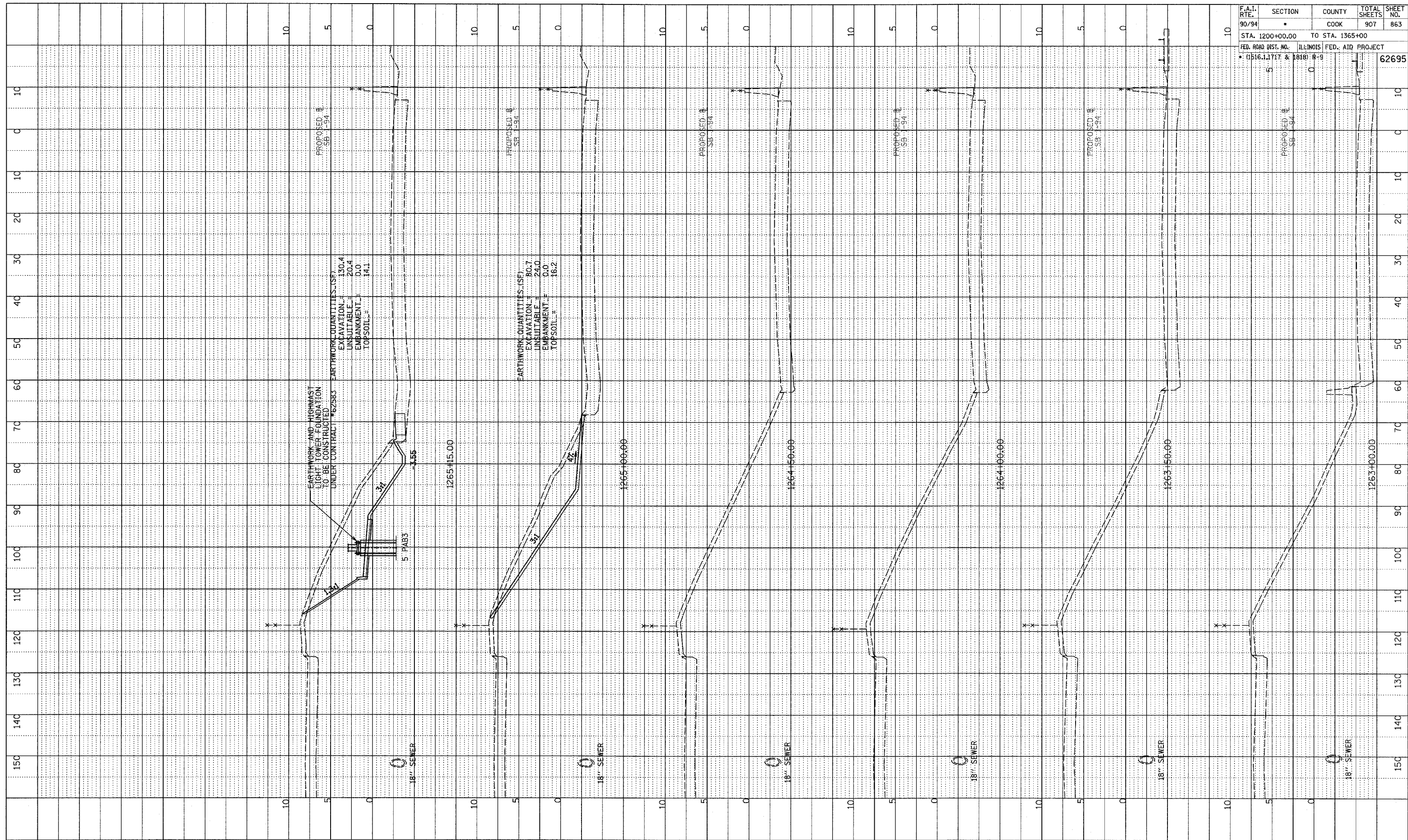
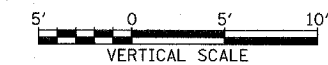


PROFILE SURVEYED  
 PLOTTED, CHECKED  
 NOTE BOOK  
 NO. \_\_\_\_\_  
 STRUCTURE NOTATIONS CHECKED

F.A.I. RTE.	SECTION	COUNTY	TOTAL SHEETS	SHEET NO.
90/94		COOK	907	863
STA. 1200+00.00 TO STA. 1365+00		ILLINOIS FED. AID PROJECT		
FED. ROAD DIST. NO. (0516.1, 1717 & 1818) R-9		PROJECT NO. 62695		



TYLIN INTERNATIONAL



SB 87th ST. EXIT RAMP  
 STA. 1263+00 TO STA. 1265+15

P:\02373\road\07\02\01\T\02373101.dwg