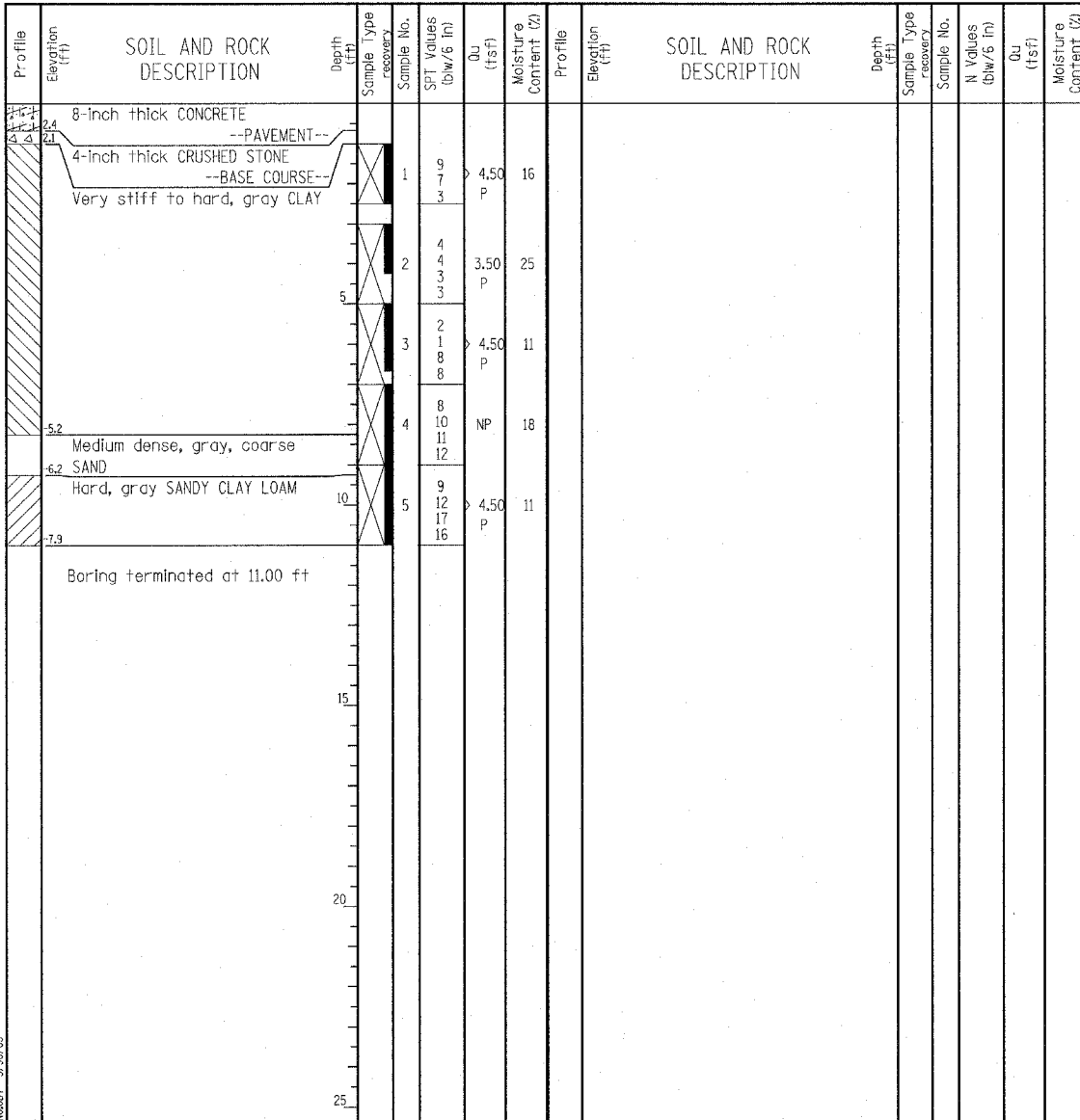


Wang Engineering, Inc.
 Consulting Geotechnical and Environmental Engineers
 wangeng3@wangeng.com
 1145 Main Street
 Lombard, IL 60148
 Telephone: 630 953-9928
 Fax: 630 953-9938

BORING LOG P-147
 WEI Job No.: 414-07-01
 Client: T. Y. LIN International
 Project: Dan Ryan Improvements
 Location: From 95th Street to 69th Street

Datum: CCD
 Elevation: 3.06 ft
 North: 1843600.70 ft
 East: 1177655.18 ft
 Station: 1222+19.05
 Offset: 58.89 LT

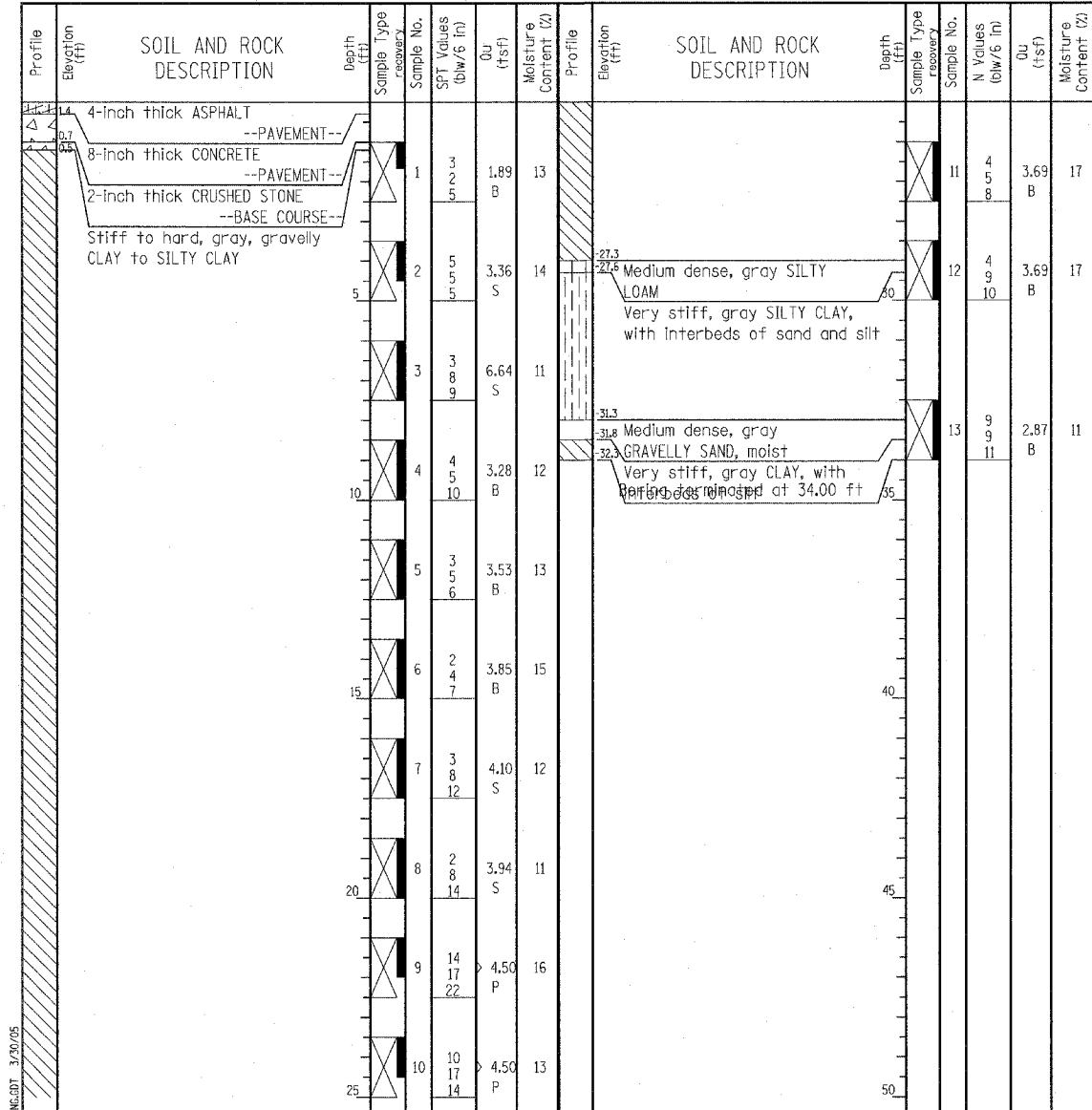


GENERAL NOTES				WATER LEVEL DATA			
Begin Drilling	06-26-2003	Complete Drilling	06-26-2003	While Drilling	∇	DRY	
Drilling Contractor	Patrick Drilling	Drill Rig	CME 75 TMR	At Completion of Drilling	∇	DRY	
Driller	J&B	Logger	Y. Shiu	Time After Drilling	NA		
Checked by	S. Janowski			Depth to Water	∇	NA	
Drilling Method 3.25" ID HSA; Boring backfilled with bentonite upon completion							

Wang Engineering, Inc.
 Consulting Geotechnical and Environmental Engineers
 wangeng3@wangeng.com
 1145 Main Street
 Lombard, IL 60148
 Telephone: 630 953-9928
 Fax: 630 953-9938

BORING LOG P-157/JP-40
 WEI Job No.: 414-07-01
 Client: T. Y. LIN International
 Project: Dan Ryan Improvements
 Location: From 95th Street to 69th Street

Datum: CCD
 Elevation: 1.70 ft
 North: 1840791.65 ft
 East: 1177539.61 ft
 Station: 144+30.78
 Offset: 46.74 LT



GENERAL NOTES				WATER LEVEL DATA			
Begin Drilling	06-02-2003	Complete Drilling	06-02-2003	While Drilling	∇	DRY	
Drilling Contractor	Patrick Drilling	Drill Rig	CME 75 TMR	At Completion of Drilling	∇	DRY	
Driller	K&J	Logger	J. Kasnick	Time After Drilling	NA		
Checked by	N. Davis			Depth to Water	∇	NA	
Drilling Method 3.25" ID HSA; Boring backfilled with bentonite upon completion							

LEGEND

NP	NON-PLASTIC
B	BULGE FAILURE
S	SHEAR FAILURE
P	POCKET PENETROMETER

TYLIN INTERNATIONAL

REVISIONS	
NAME	DATE

ILLINOIS DEPARTMENT OF TRANSPORTATION
 F.A.I. 94 (DAN RYAN EXPRESSWAY)
 BORING LOGS P-147 & P-157

S.N. _____ DESIGNED BY: DJR
 SCALE: N.T.S. DRAWN BY: DJR
 DATE: MARCH 25, 2005 CHECKED BY: DAK