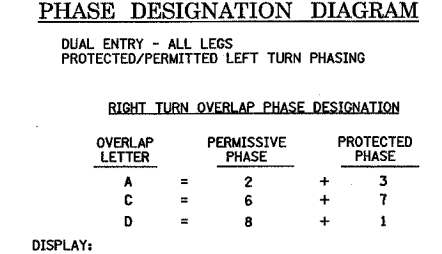
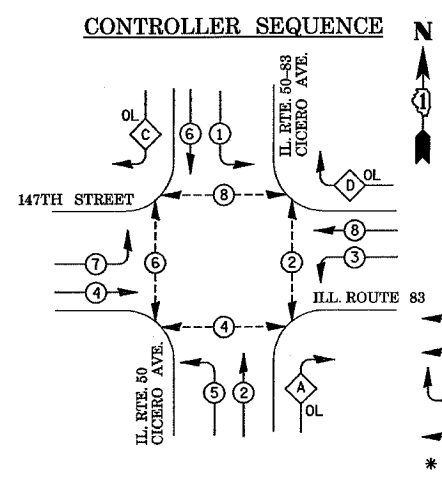
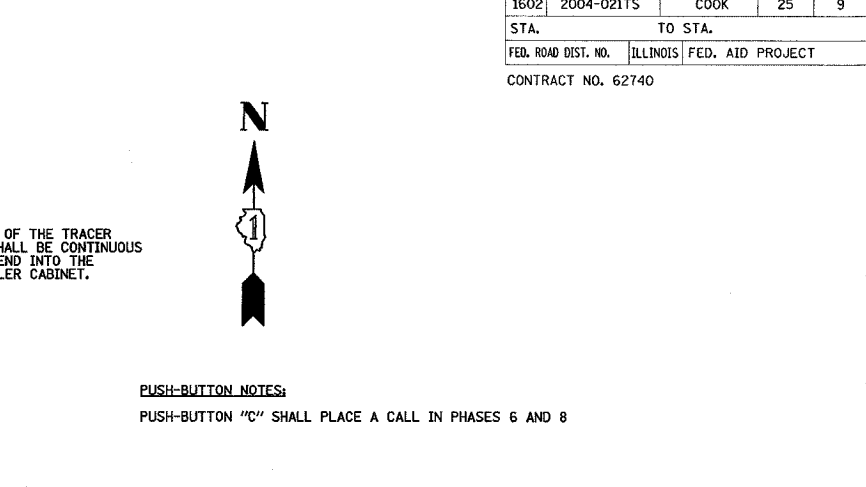
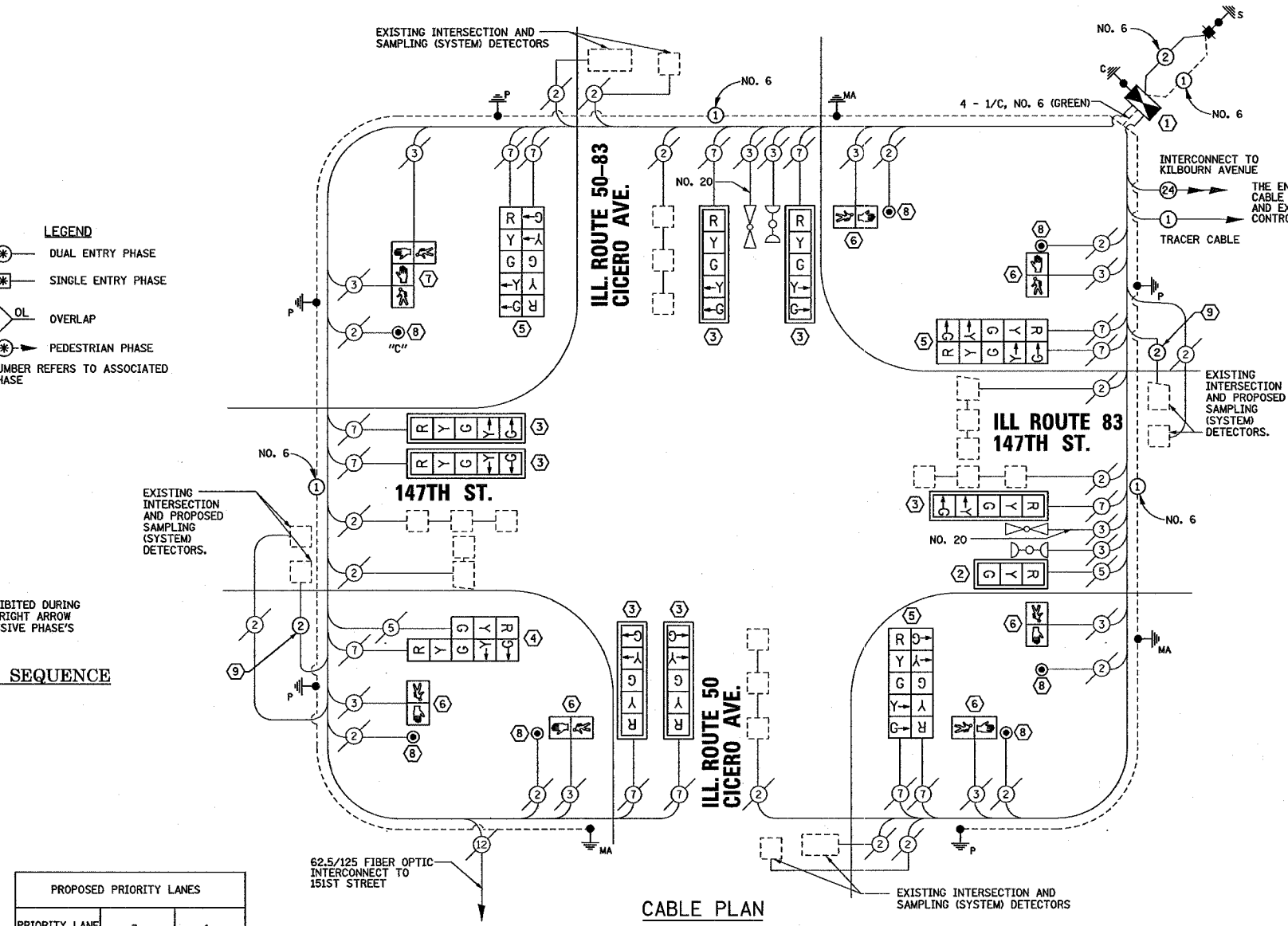
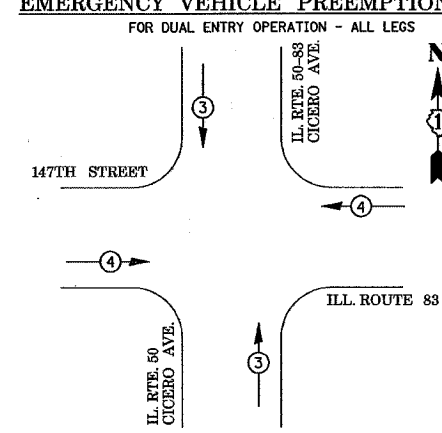


| F.A.U. RTE. | SECTION | COUNTY | TOTAL SHEETS | SHEET NO. |
|---------------------|------------|---------------------------|--------------|-----------|
| 1602 | 2004-021TS | COOK | 25 | 9 |
| STA. | | TO STA. | | |
| FED. ROAD DIST. NO. | | ILLINOIS FED. AID PROJECT | | |
| CONTRACT NO. 62740 | | | | |



DISPLAY:
 - THE YELLOW RIGHT ARROW OF THE OVERLAP SHALL BE INHIBITED DURING THE PERMISSIVE PHASE'S YELLOW INTERVAL. THE GREEN RIGHT ARROW OF THE OVERLAP SHALL BE INHIBITED DURING THE PERMISSIVE PHASE'S GREEN INTERVAL.



CABLE PLAN LEGEND

| EXISTING | PROPOSED | DESCRIPTION |
|----------|----------|---|
| (Symbol) | (Symbol) | 8" (200mm) TRAFFIC SIGNAL SECTION |
| (Symbol) | (Symbol) | 12" (300mm) TRAFFIC SIGNAL SECTION |
| (Symbol) | (Symbol) | 12" (300mm) PEDESTRIAN SIGNAL SECTION |
| (Symbol) | (Symbol) | 12" (300mm) PEDESTRIAN SIGNAL SECTION |
| (Symbol) | (Symbol) | CONTROLLER CABINET |
| (Symbol) | (Symbol) | SERVICE INSTALLATION |
| (Symbol) | (Symbol) | TELEPHONE CONNECTION |
| (Symbol) | (Symbol) | VEHICLE DETECTOR, INDUCTION LOOP |
| (Symbol) | (Symbol) | MAGNETIC DETECTOR |
| (Symbol) | (Symbol) | EMERGENCY VEHICLE LIGHT DETECTOR |
| (Symbol) | (Symbol) | CONFIRMATION BEACON |
| (Symbol) | (Symbol) | PUSHBUTTON DETECTOR |
| (Symbol) | (Symbol) | 8" (200mm) TRAFFIC SIGNAL SECTION |
| (Symbol) | (Symbol) | 12" (300mm) PEDESTRIAN SIGNAL SECTION |
| (Symbol) | (Symbol) | CONTROLLER CABINET |
| (Symbol) | (Symbol) | SERVICE INSTALLATION |
| (Symbol) | (Symbol) | TELEPHONE CONNECTION |
| (Symbol) | (Symbol) | VEHICLE DETECTOR, INDUCTION LOOP |
| (Symbol) | (Symbol) | MAGNETIC DETECTOR |
| (Symbol) | (Symbol) | EMERGENCY VEHICLE LIGHT DETECTOR |
| (Symbol) | (Symbol) | CONFIRMATION BEACON |
| (Symbol) | (Symbol) | PUSHBUTTON DETECTOR |
| (Symbol) | (Symbol) | GROUND CABLE IN CONDUIT NO. 6 SOLID COPPER (GREEN) |
| (Symbol) | (Symbol) | FIBER OPTIC CABLE IN CONDUIT NO. 62.5/125 MM12F SM12F |
| (Symbol) | (Symbol) | SIGNAL FACE WITH BACKPLATE, "P" INDICATES PROGRAMMED HEAD |
| (Symbol) | (Symbol) | RAILROAD CONTROL CABINET |
| (Symbol) | (Symbol) | ILLUMINATED SIGN "NO LEFT TURN" |
| (Symbol) | (Symbol) | ILLUMINATED SIGN "NO RIGHT TURN" |
| (Symbol) | (Symbol) | GROUND ROD AT HANDHOLE (H), DOUBLE HANDHOLE (H), OR CONTROLLER (C). |
| (Symbol) | (Symbol) | GROUND ROD AT POST (P), OR MAST ARM POLE (MA). |
| (Symbol) | (Symbol) | GROUND ROD AT ELECTRIC SERVICE INSTALLATION |

I.D.O.T. TRAFFIC SIGNAL INSTALLATION ELECTRICAL SERVICE REQUIREMENTS

| TYPE | NO. LAMPS | WATTAGE INCAND. | WATTAGE LED | X % OPERATION | TOTAL WATTAGE |
|--------------|-----------|-----------------|-------------|---------------|---------------|
| SIGNAL (RED) | 16 | 135 | 17 | 0.50 | 136.0 |
| (YELLOW) | 16 | 135 | 25 | 0.25 | 100.0 |
| (GREEN) | 16 | 135 | 15 | 0.25 | 60.0 |
| ARROW | 28 | 135 | 12 | 0.10 | 33.6 |
| PED. SIGNAL | 8 | 90 | 25 | 1.00 | 200.0 |
| CONTROLLER | 1 | 100 | 100 | 1.00 | 100.0 |
| ILLUM. SIGN | 0 | 84 | | 0.05 | 0.00 |
| FLASHER | 0 | | | 0.50 | 0.00 |
| TOTAL = | | | | | 629.6 |

ENERGY COSTS - BILLED TO: VILLAGE OF MIDLOTHIAN (ADDRESS) 14801 S. PULASKI ROAD MIDLOTHIAN, IL 60445
 ENERGY SUPPLY - CONTACT: LARRY WOODLE (PHONE) (708) 235-2327 COMPANY: COMMONWEALTH EDISON

CONSTRUCTION NOTES:

- REMOVE EXISTING CONTROLLER AND CABINET. INSTALL NEW CONTROLLER AND TYPE IV CABINET, SPECIAL, RE-USE EXISTING FOUNDATION. RELOCATE EXISTING EMERGENCY VEHICLE PRIORITY SYSTEM, PHASING UNIT TO NEW CONTROLLER CABINET. RELOCATION OF THE EXISTING EMERGENCY PRIORITY SYSTEM SHALL BE INCLUDED IN THE NEW CONTROLLER UNIT PRICE.
- REMOVE EXISTING SIGNAL HEAD, 1-FACE, 3-SECTION. INSTALL NEW SIGNAL HEAD, L.E.D., 1-FACE, 3-SECTION, MAST ARM MOUNTED, AND TRAFFIC SIGNAL BACKPLATE.
- REMOVE EXISTING SIGNAL HEAD, 1-FACE, 5-SECTION. INSTALL NEW SIGNAL HEAD, L.E.D., 1-FACE, 5-SECTION, MAST ARM MOUNTED, AND TRAFFIC SIGNAL BACKPLATE.
- REMOVE EXISTING SIGNAL HEAD, 2-FACE, 1-3 SECTION, 1-5 SECTION, BRACKET MOUNTED. INSTALL NEW SIGNAL HEAD, L.E.D., 2-FACE, 1-3 SECTION, 1-5 SECTION BRACKET MOUNTED.
- REMOVE EXISTING SIGNAL HEAD, 2-FACE, 5-SECTION. INSTALL NEW SIGNAL HEAD, L.E.D., 2-FACE, 5-SECTION, BRACKET MOUNTED.
- REMOVE EXISTING PEDESTRIAN SIGNAL HEAD, 1-FACE. INSTALL NEW PEDESTRIAN SIGNAL HEAD, L.E.D., 1-FACE, BRACKET MOUNTED.
- REMOVE EXISTING PEDESTRIAN SIGNAL HEAD, 2-FACE. INSTALL NEW PEDESTRIAN SIGNAL HEAD, L.E.D., 2-FACE, BRACKET MOUNTED.
- REMOVE EXISTING PEDESTRIAN PUSH-BUTTON. INSTALL NEW PEDESTRIAN PUSH-BUTTON.
- INSTALL NEW ELECTRIC CABLE IN CONDUIT, LEAD-IN, NO. 14, 1-PAIR

| FOUNDATION (DEPTH) | (FT.) (m) | CABLE SLACK | (FT.) (m) | VERTICAL | (FT.) (m) |
|--------------------|-----------|------------------|-----------|-------------------|---------------------------|
| TYPE A - POST | 4 (1.2) | HANDHOLE | 6.5 (2.0) | ALL FOUNDATIONS | 3.5 (1.0) |
| D - CONTROLLER | 4 (1.2) | DOUBLE HANDHOLE | 13 (4.0) | MAST ARM (L) POLE | 20' + L - 2 = (6m+L-0.6m) |
| E - M. ARM POLE | | SIGNAL POST | 2 (1.0) | BRACKET MOUNTED | 13 (4.0) |
| | | CONTROLLER CAB. | 1 (0.5) | PED. PUSHBUTTON | 4 (1.2) |
| | | FIBER OPTIC | 13 (4.0) | ELECTRIC SERVICE | 13.5 (4.1) |
| | | ELECTRIC SERVICE | 1 (0.5) | SERVICE TO GROUND | 13.5 (4.1) |
| | | GROUND CABLE | 1 (0.5) | POST MOUNTED | 6 (1.8) |

NOTE: THE TRAFFIC SIGNAL CONTROL EQUIPMENT FOR THIS PROJECT SHALL BE "ECONOLITE" TO MATCH THE ADJACENT SYSTEM.

SETON ENGINEERING
 SERVICE CORPORATION
 CIVIL ENGINEERS
 19 S. BOWWELL STREET
 PALATINE, ILLINOIS 60067
 VOICES 847-776-7200 FAX: 847-776-7239

REVISIONS

| NAME | DATE |
|------|------|
| | |

ILLINOIS DEPARTMENT OF TRANSPORTATION
CABLE PLAN, PHASE DESIGNATION DIAGRAM, EMERGENCY VEHICLE PREEMPTION SEQUENCE AND SCHEDULE OF QUANTITIES
 ILL. ROUTE 83 (147TH STREET) AT ILL. ROUTE 50 (CICERO AVENUE) MIDLOTHIAN, ILLINOIS
 SCALE: N.T.S. DATE: 09-20-2004
 DRAWN BY: CWC
 DESIGNED BY: VO
 CHECKED BY: TJM