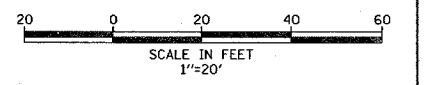
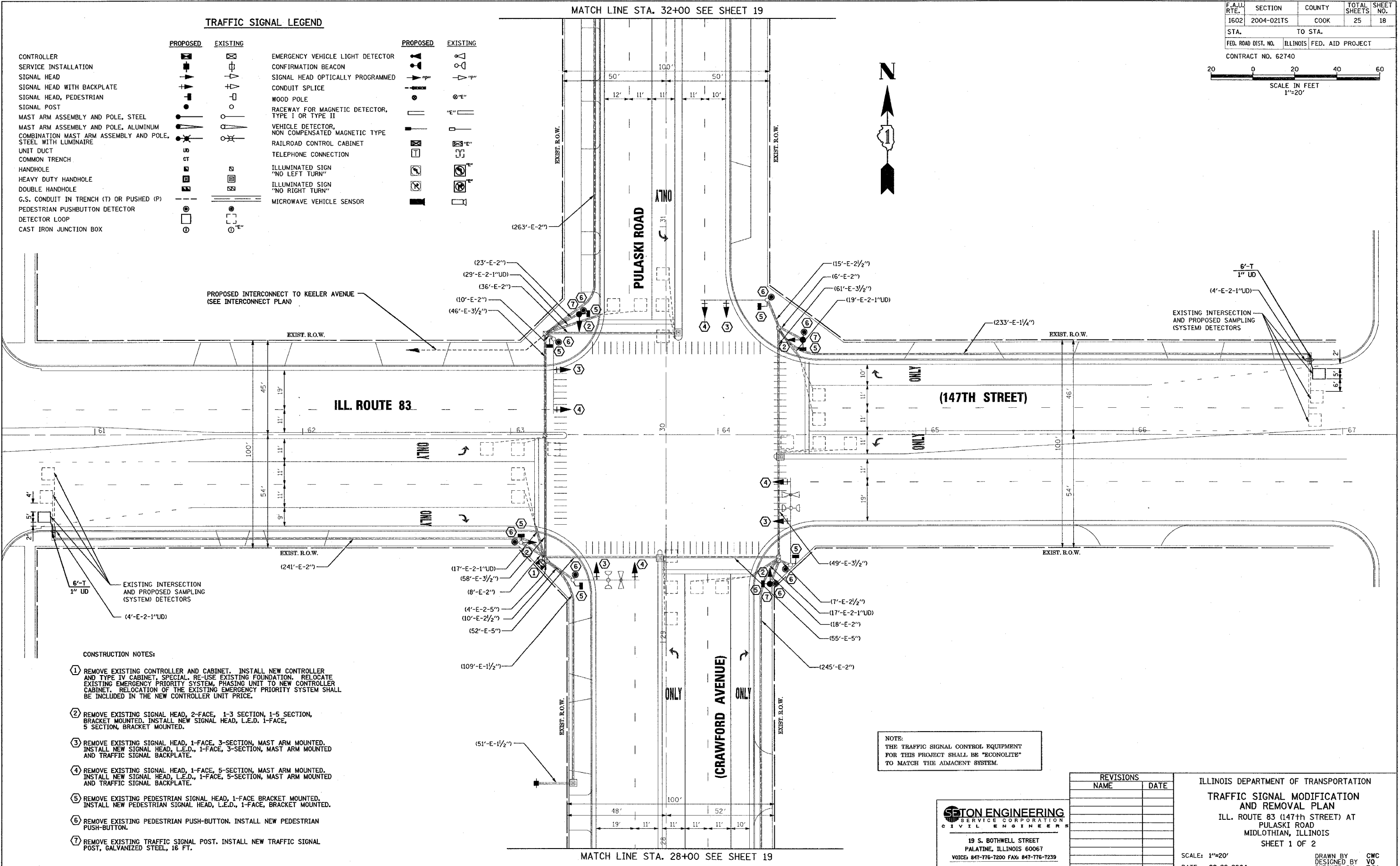


F.A.U. RTE.	SECTION	COUNTY	TOTAL SHEETS	SHEET NO.
1602	2004-021TS	COOK	25	18
STA.		TO STA.		
FED. ROAD DIST. NO.		ILLINOIS	FED. AID PROJECT	
CONTRACT NO. 62740				



**TRAFFIC SIGNAL LEGEND**

PROPOSED	EXISTING	PROPOSED	EXISTING
CONTROLLER	[Symbol]	EMERGENCY VEHICLE LIGHT DETECTOR	[Symbol]
SERVICE INSTALLATION	[Symbol]	CONFIRMATION BEACON	[Symbol]
SIGNAL HEAD	[Symbol]	SIGNAL HEAD OPTICALLY PROGRAMMED	[Symbol]
SIGNAL HEAD WITH BACKPLATE	[Symbol]	CONDUIT SPLICE	[Symbol]
SIGNAL HEAD, PEDESTRIAN	[Symbol]	WOOD POLE	[Symbol]
SIGNAL POST	[Symbol]	RACEWAY FOR MAGNETIC DETECTOR, TYPE I OR TYPE II	[Symbol]
MAST ARM ASSEMBLY AND POLE, STEEL	[Symbol]	VEHICLE DETECTOR, NON COMPENSATED MAGNETIC TYPE	[Symbol]
MAST ARM ASSEMBLY AND POLE, ALUMINUM	[Symbol]	RAILROAD CONTROL CABINET	[Symbol]
COMBINATION MAST ARM ASSEMBLY AND POLE, STEEL WITH LUMINAIRE	[Symbol]	TELEPHONE CONNECTION	[Symbol]
UNIT DUCT	[Symbol]	ILLUMINATED SIGN "NO LEFT TURN"	[Symbol]
COMMON TRENCH	[Symbol]	ILLUMINATED SIGN "NO RIGHT TURN"	[Symbol]
HANDHOLE	[Symbol]	MICROWAVE VEHICLE SENSOR	[Symbol]
HEAVY DUTY HANDHOLE	[Symbol]		
DOUBLE HANDHOLE	[Symbol]		
G.S. CONDUIT IN TRENCH (T) OR PUSHED (P)	[Symbol]		
PEDESTRIAN PUSHBUTTON DETECTOR	[Symbol]		
DETECTOR LOOP	[Symbol]		
CAST IRON JUNCTION BOX	[Symbol]		



PROPOSED INTERCONNECT TO KEELER AVENUE (SEE INTERCONNECT PLAN)

EXISTING INTERSECTION AND PROPOSED SAMPLING (SYSTEM) DETECTORS

EXISTING INTERSECTION AND PROPOSED SAMPLING (SYSTEM) DETECTORS

**CONSTRUCTION NOTES:**

- 1 REMOVE EXISTING CONTROLLER AND CABINET. INSTALL NEW CONTROLLER AND TYPE IV CABINET, SPECIAL. RE-USE EXISTING FOUNDATION. RELOCATE EXISTING EMERGENCY PRIORITY SYSTEM, PHASING UNIT TO NEW CONTROLLER CABINET. RELOCATION OF THE EXISTING EMERGENCY PRIORITY SYSTEM SHALL BE INCLUDED IN THE NEW CONTROLLER UNIT PRICE.
- 2 REMOVE EXISTING SIGNAL HEAD, 2-FACE, 1-3 SECTION, 1-5 SECTION, BRACKET MOUNTED. INSTALL NEW SIGNAL HEAD, L.E.D., 1-FACE, 5 SECTION, BRACKET MOUNTED.
- 3 REMOVE EXISTING SIGNAL HEAD, 1-FACE, 3-SECTION, MAST ARM MOUNTED. INSTALL NEW SIGNAL HEAD, L.E.D., 1-FACE, 3-SECTION, MAST ARM MOUNTED AND TRAFFIC SIGNAL BACKPLATE.
- 4 REMOVE EXISTING SIGNAL HEAD, 1-FACE, 5-SECTION, MAST ARM MOUNTED. INSTALL NEW SIGNAL HEAD, L.E.D., 1-FACE, 5-SECTION, MAST ARM MOUNTED AND TRAFFIC SIGNAL BACKPLATE.
- 5 REMOVE EXISTING PEDESTRIAN SIGNAL HEAD, 1-FACE BRACKET MOUNTED. INSTALL NEW PEDESTRIAN SIGNAL HEAD, L.E.D., 1-FACE, BRACKET MOUNTED.
- 6 REMOVE EXISTING PEDESTRIAN PUSH-BUTTON. INSTALL NEW PEDESTRIAN PUSH-BUTTON.
- 7 REMOVE EXISTING TRAFFIC SIGNAL POST. INSTALL NEW TRAFFIC SIGNAL POST, GALVANIZED STEEL, 16 FT.

NOTE:  
THE TRAFFIC SIGNAL CONTROL EQUIPMENT FOR THIS PROJECT SHALL BE "ECONOLITE" TO MATCH THE ADJACENT SYSTEM.

**SETON ENGINEERING**  
SERVICE CORPORATION  
CIVIL ENGINEERS  
19 S. BOWHILL STREET  
PALATINE, ILLINOIS 60067  
VOICE: 847-776-7200 FAX: 847-776-7239  
SETON PROJECT # 200901-001-01

REVISIONS	
NAME	DATE

ILLINOIS DEPARTMENT OF TRANSPORTATION  
**TRAFFIC SIGNAL MODIFICATION AND REMOVAL PLAN**  
ILL. ROUTE 83 (147th STREET) AT PULASKI ROAD, MIDLOTHIAN, ILLINOIS  
SHEET 1 OF 2  
SCALE: 1"=20'  
DATE: 09-20-2004  
DRAWN BY: CWC  
DESIGNED BY: VO  
CHECKED BY: TJM