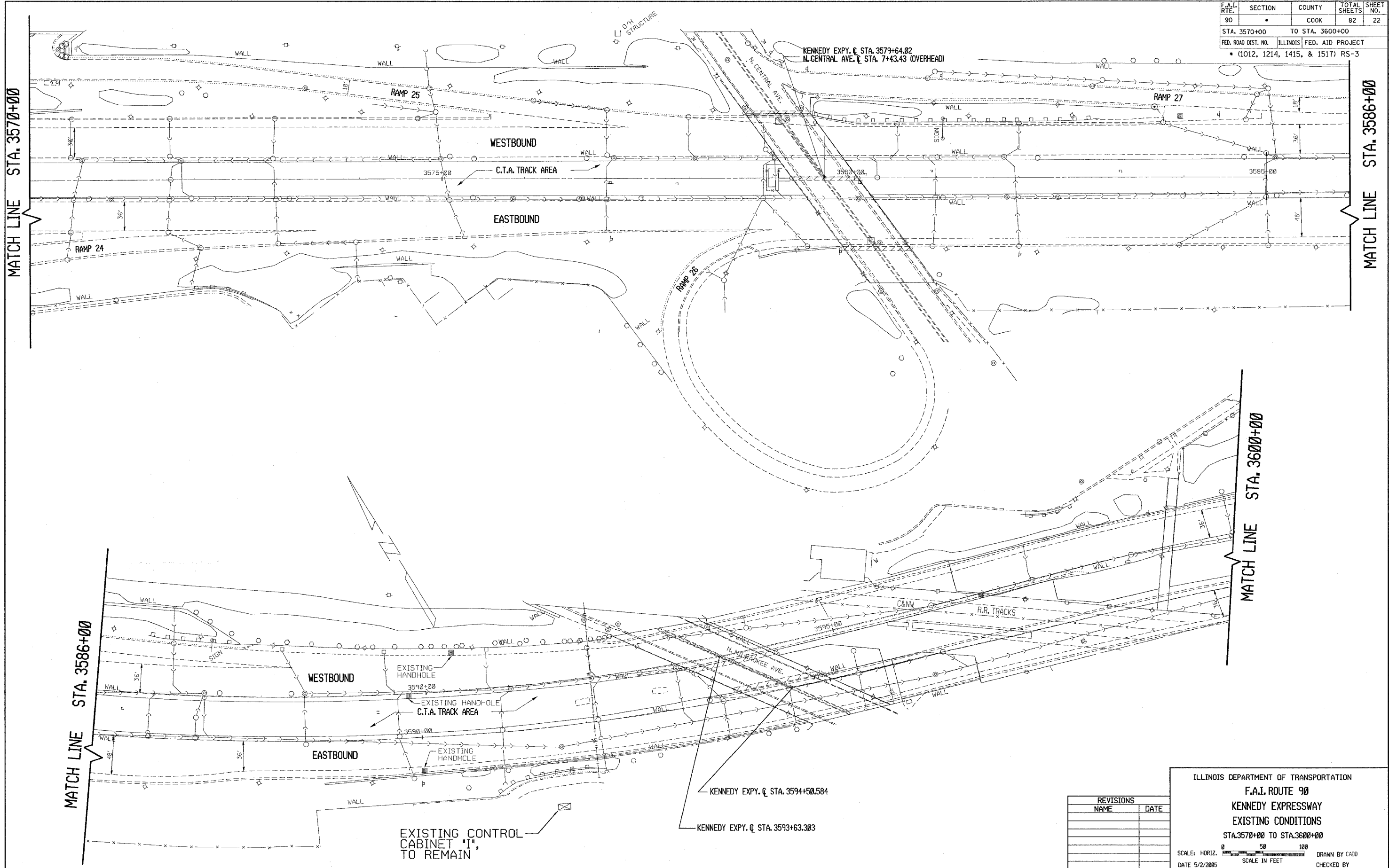


F.A.I. RTE.	SECTION	COUNTY	TOTAL SHEETS	SHEET NO.
90		COOK	82	22
STA. 3570+00		TO STA. 3600+00		
FED. ROAD DIST. NO.		ILLINOIS FED. AID PROJECT		
* (1012, 1214, 1415, & 1517) RS-3				



REVISIONS	
NAME	DATE

ILLINOIS DEPARTMENT OF TRANSPORTATION  
**F.A.I. ROUTE 90**  
**KENNEDY EXPRESSWAY**  
**EXISTING CONDITIONS**  
 STA. 3570+00 TO STA. 3600+00  
 SCALE: HORIZ. 1" = 50' 100'  
 SCALE IN FEET  
 DATE 5/2/2005  
 DRAWN BY CAD  
 CHECKED BY