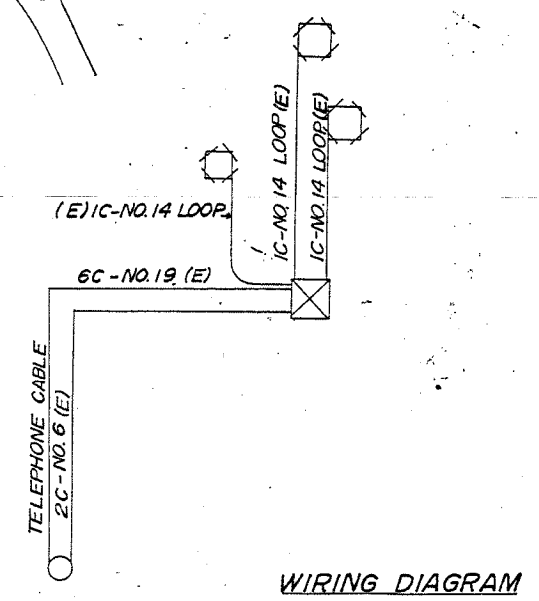
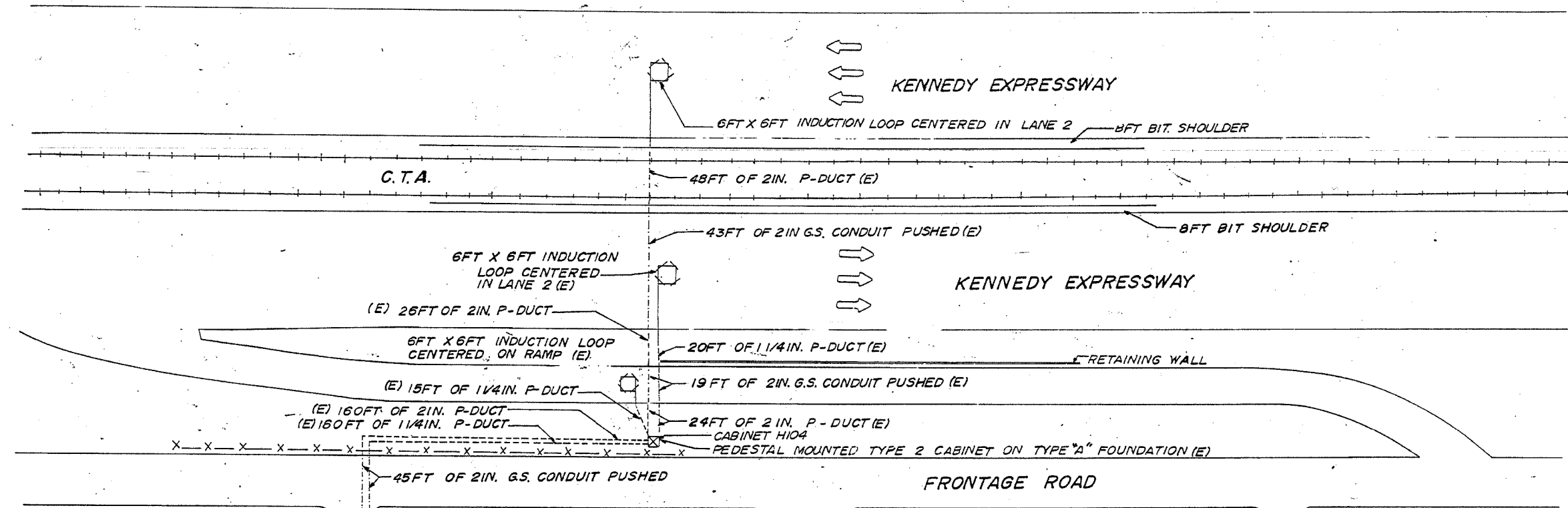


F.A.I. RTE.	SECTION	COUNTY	TOTAL SHEETS	SHEET NO.
90		COOK	82	49
STA.	TO STA.		FED. AID PROJECT	
			(1012, 1214, 1415, & 1517) RS-3	

62746



WIRING DIAGRAM

- LEGEND**
- INDUCTION LOOP
  - ⊗ CABINET
  - SERVICE INSTALLATION
  - DUCT
  - - - CONDUIT
  - X- FENCE
  - (E) EXISTING

FOR INFORMATION ONLY

REVISIONS	
NAME	DATE

ILLINOIS DEPARTMENT OF TRANSPORTATION  
**F.A.I. ROUTE 90**  
**KENNEDY EXPRESSWAY**  
**INDUCTION LOOP PLANS**  
**MEADE AVENUE**

SCALE: VERT. NONE  
 HORIZ. NONE  
 DATE 04/05/2004

DRAWN BY  
 CHECKED BY