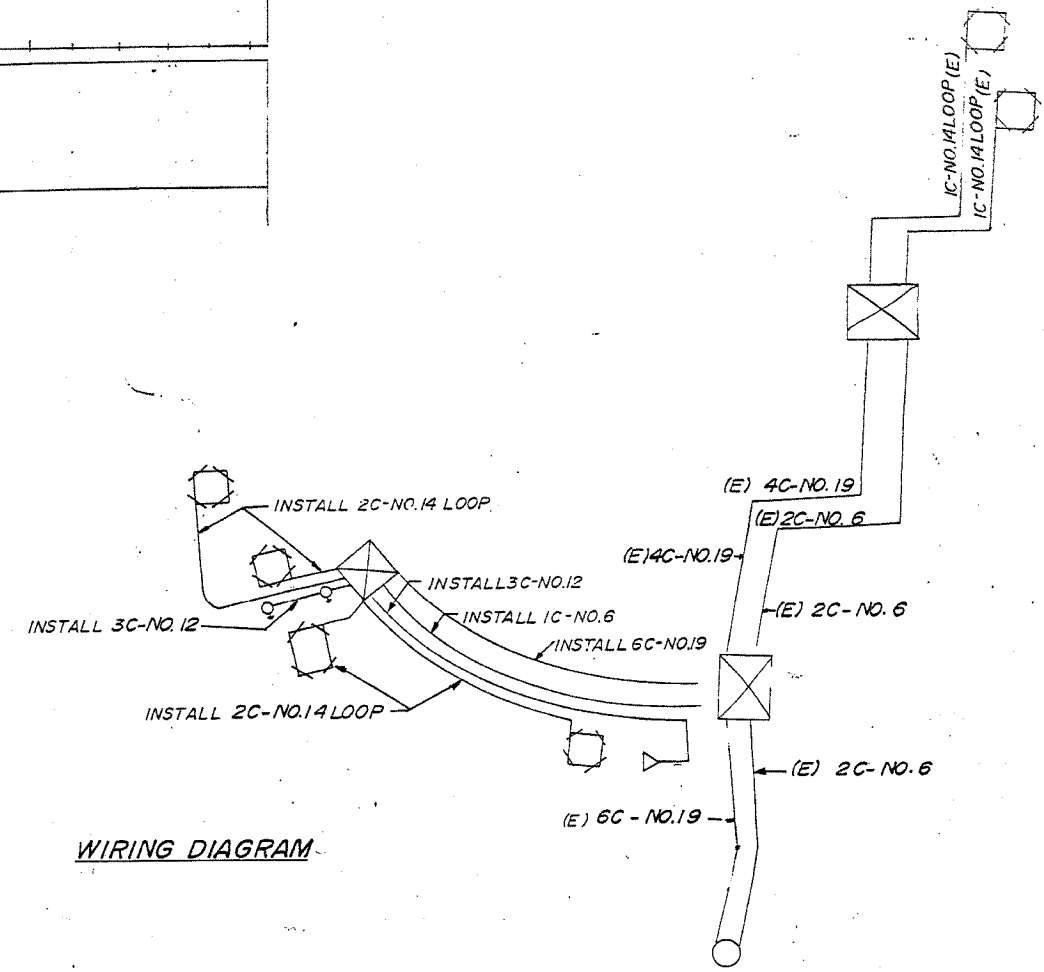
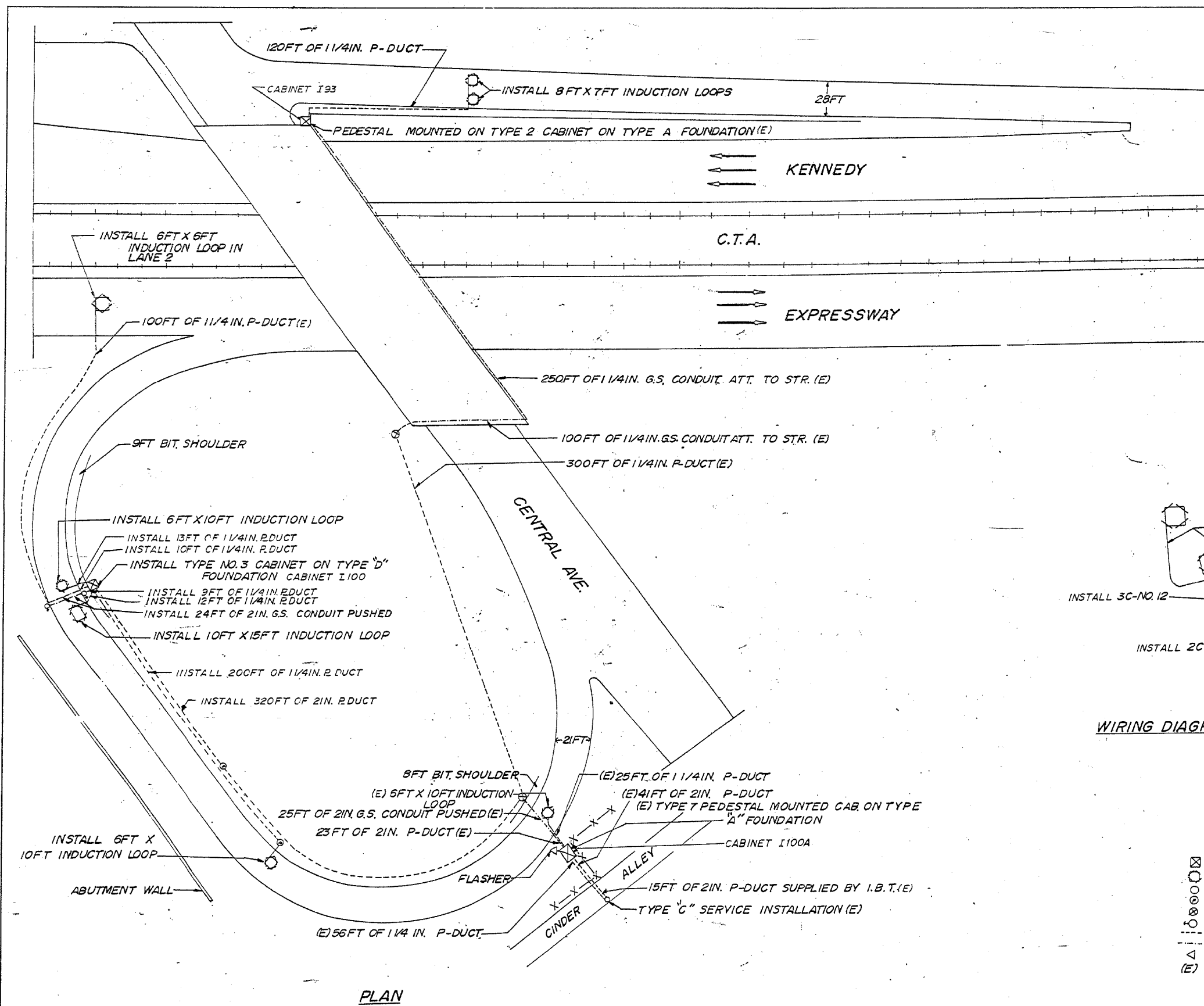


F.A.I. RTE.	SECTION	COUNTY	TOTAL SHEETS	SHEET NO.
90		COOK	82	51
STA.	TO STA.		FED. AID PROJECT	
FED. ROAD DIST. NO. 1	ILLINOIS	FED. AID PROJECT		
• (1012, 1214, 1415, & 1517) RS-3				

62746



WIRING DIAGRAM

- LEGEND**
- ⊠ CABINET
 - INDUCTION LOOP
 - SERVICE INSTALLATION
 - ⊙ PULL POINT
 - ⊗ HANDHOLE
 - METERING SIGNAL
 - DUCT
 - CONDUIT
 - △ FLASHER
 - (E) EXISTING

FOR INFORMATION ONLY

REVISIONS	
NAME	DATE

ILLINOIS DEPARTMENT OF TRANSPORTATION
F.A.I. ROUTE 90
KENNEDY EXPRESSWAY
INDUCTION LOOP PLANS
CENTRAL AVENUE

SCALE: VERT. NONE
 HORIZ. DATE 04/05/2004

DRAWN BY
 CHECKED BY

18.06 04/05/2004
 2004
 04/05/2004
 cadproj\project\12080\1\12080\dec.m32

PLAN