

ROUTE	SECTION	COUNTY	TOTAL SHEETS	SHEET NUMBER
VARIOUS	2004-053BP	COOK & WILL	13	1

FOR INDEX OF SHEETS SEE SHEET 2

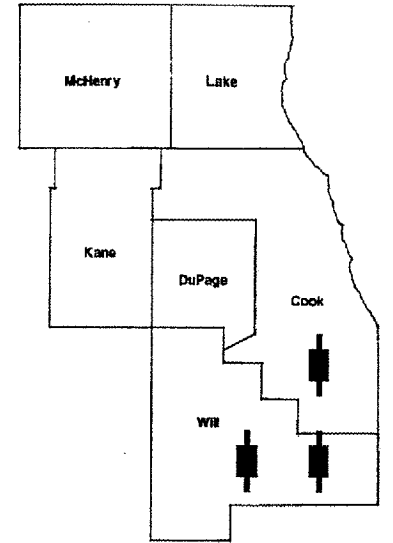
STATE OF ILLINOIS
DEPARTMENT OF
TRANSPORTATION
DIVISION OF HIGHWAYS
DISTRICT ONE
PROPOSED HIGHWAY PLANS

Contract 62790

D-91-269-04

IMPROVEMENTS ARE
 LOCATED IN THE VILLAGE OF
 MOKENA, THE CITY OF
 CHICAGO, AND PEOTONE TWP

VARIOUS ROUTES
 VARIOUS LOCATIONS
 SECTION 2004-053BP
 BRIDGE PAINTING
 COOK & WILL COUNTIES
 C-91-269-04



LOCATION OF IMPROVEMENT INDICATED THUS:

- 1) S.N. 016-2031: 107th ST. OVER I-57
- 2) S.N. 016-2032: S. THROOP ST. OVER I-57
- 3) S.N. 099-0038, -0039: I-57 OVER ABANDONED CMSTP&P RR
- 4) S.N. 099-0116: US 45 OVER IAIS RR
- 5.) S.N. 016-2036: IL 1(HALSTED ST) OVER I-57

STATE OF ILLINOIS
DEPARTMENT OF TRANSPORTATION
DIVISION OF HIGHWAYS

SUBMITTED: March 31, 20 05

Dimes O'Keefe/AP

DEPUTY DIRECTOR OF HIGHWAY, REGIONAL ENGINEER

May 13, 2005

Mike Hene

ENGINEER OF DESIGN AND ENVIRONMENT

May 13, 2005

Victor Modder

DIRECTOR, DIVISION OF HIGHWAYS

PRINTED BY THE AUTHORITY
OF THE STATE OF ILLINOIS

J.U.L.I.E.: JOINT UTILITY LOCATION
 INFORMATION FOR EXCAVATION
 (800) 892-0123

C.U.A.N.: CHICAGO UTILITY
 ALERT NETWORK
 (312) 774-7000

CONTRACT NO. 62790

DISTRICT ONE BUREAU OF DESIGN
 PLANPREP ENGINEER: KEN ENG/R. BORO (847)705-4178

ROUTE	SECTION	COUNTY	TOTAL SHEETS	SHEET NUMBER
VARIOUS	2004-053BP	COOK & WILL	13	2

Contract 62790

INDEX OF SHEETS

- 1 TITLE SHEET
- 2 INDEX OF SHEETS, STATE STANDARDS AND GENERAL NOTES
- 3 GENERAL PAINT NOTES
- 4 LOCATION MAPS
- 5 SUMMARY OF QUANTITIES
- 6 EXISTING BRIDGE PLANS (S.N. 016-2031: LOCATION 1)
- 7 EXISTING BRIDGE PLANS (S.N. 016-2032: LOCATION 2)
- 8 - 9 EXISTING BRIDGE PLANS (S.N. 099-0038, -0039: LOCATION 3)
- 10 EXISTING BRIDGE PLANS (S.N. 099-0116: LOCATION 4)
- 11 EXISTING BRIDGE PLANS (S.N. 016-2036: LOCATION 5)
- 12 DISTRICT ONE FREEWAY STANDARD: SHOULDER CLOSURES AND PARTIAL RAMP CLOSURES
- 13 TRAFFIC CONTROL AND PROTECTION FOR SIDE ROADS, INTERSECTIONS AND DRIVEWAYS

STATE STANDARDS

- 701101-01 MULTI-LANE OFF-ROAD OPERATIONS
- 701301-02 LANE CLOSURE 2L, 2W SHORT TIME OPERATIONS
- 701400-02 APPROACH TO LANE CLOSURE, FREEWAY/EXPRESSWAY
- 701401-03 LANE CLOSURE, FREEWAY/EXPRESSWAY
- 701446 TWO LANE CLOSURE, FREEWAY/EXPRESSWAY
- 701601-04 URBAN LANE CLOSURE, MULTILANE, 1W OR 2W WITH NONTRAVERSABLE MEDIAN
- 702001-05 TRAFFIC CONTROL DEVICES

GENERAL NOTES

IT SHALL BE THE CONTRACTOR'S RESPONSIBILITY TO VERIFY ALL DIMENSIONS & CONDITIONS EXISTING IN THE FIELD PRIOR TO CONSTRUCTION & ORDERING OF MATERIALS.

THE CONTRACTOR WILL NOT BE ALLOWED TO SET UP A YARD OR FIELD OFFICE ON STATE PROPERTY WITHOUT WRITTEN PERMISSION FROM THE DEPARTMENT.

THE CONTRACTOR SHALL CONTACT THE DISTRICT ONE TRAFFIC CONTROL SUPERVISOR AT (847) 705-4151 OR 4155 FOR EXPRESSWAYS, AND (847) 705-4470 FOR ARTERIALS A MINIMUM OF 72 HOURS IN ADVANCE OF BEGINNING WORK.

WHEN ARTIFICIAL LIGHTING IS UTILIZED IN NIGHT OPERATIONS, THE CONTRACTOR SHALL EXERCISE THE UTMOST PRECAUTIONS IN PREVENTING ADVERSE VISIBILITY TO THE MOTORING PUBLIC AND ADJOINING RESIDENTIAL AREA.

IT SHALL BE THE CONTRACTORS RESPONSIBILITY TO PROTECT AND MAINTAIN THE EXISTING BRIDGE LIGHTING AT ALL LOCATIONS.

THE SPECIAL PROVISIONS FOR "TEMPORARY INFORMATION SIGNING FOR LANE CLOSURES" AND "PUBLIC CONVENIENCE AND SAFETY" ARE APPLICABLE ONLY TO ARTERIAL ROADS AND SHALL NOT BE APPLIED TO EXPRESSWAYS.

THE CONTRACTOR SHALL BE REQUIRED TO PROVIDE ACCESS TO ABUTTING PROPERTY AT ALL TIMES DURING THE CONSTRUCTION OF THIS PROJECT.

ILLINOIS DEPARTMENT OF TRANSPORTATION

INDEX OF SHEETS
STATE STANDARDS
GENERAL NOTES

Rev,

ROUTE	SECTION	COUNTY	TOTAL SHEETS	SHEET NUMBER
VARIOUS	2004-053BP	COOK & WILL	13	3

Contract 62790

GENERAL NOTES FOR PAINT

CLEANING AND PAINTING OF THE EXISTING STRUCTURAL STEEL SHALL BE AS SPECIFIED IN THE SPECIAL PROVISION FOR "CLEANING AND PAINTING EXISTING STEEL STRUCTURES".

A MINIMUM OF FOUR (4) [AT LOCATION 5] AND TWO (2) [AT LOCATIONS 1, 2, 3 & 4] AIR MONITORS WILL BE REQUIRED TO MONITOR ABRASIVE BLASTING OPERATIONS PER LOCATION, SEE SPECIAL PROVISIONS FOR CONTAINMENT AND DISPOSAL OF LEAD PAINT CLEANING RESIDUE.

THE SSPC-QP1 AND SSPC-QP2 PAINTING CONTRACTOR CERTIFICATIONS WILL BE REQUIRED FOR THESE BRIDGES.

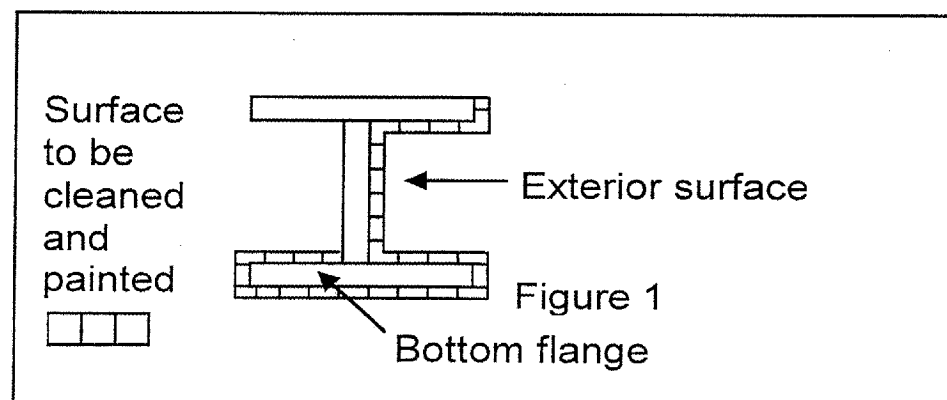
THE AREAS DESIGNATED TO BE CLEANED PER NEAR WHITE BLAST CLEANING SSPC-SP10 AND PER POWER TOOL CLEANED-COMMERCIAL GRADE AT LOCATIONS 1, 2, 3 & 4 SHALL BE PAINTED ACCORDING TO THE REQUIREMENTS OF PAINT SYSTEM 1 - OZ/E/U. LOCATION 5 SHALL BE PAINTED ACCORDING TO THE REQUIREMENTS OF PAINT SYSTEM 5 - MOISTURE CURED URETHANE-RAPID DEPLOYMENT (MCU). THE COLOR OF THE FINAL FINISH COAT FOR ALL INTERIOR STEEL SURFACES SHALL BE GRAY, MUNSELL NO 5B 7/1. THE COLOR OF THE FINAL FINISH COAT FOR THE EXTERIOR AND BOTTOM FLANGE OF THE FASCIA BEAMS SHALL BE REDDISH BROWN, MUNSELL NO 2.5YR 3/4.

ALL ITEMS (SUCH AS, BUT NOT LIMITED TO; CONDUITS, BRACKETS AND DECK DRAINS) ATTACHED TO THE OUTSIDE OF THE FASCIA BEAMS SHOULD BE CLEANED AND PAINTED.

LOCATION 5 (S.N. 016-2036): ALL STRUCTURAL STEEL SHALL BE CLEANED PER NEAR WHITE BLAST CLEANING SSPC-SP10. SEE SPECIAL PROVISION, "WARRANTY FOR CLEANING AND PAINTING STEEL STRUCTURES."

LOCATION 1 (S.N. 016-2031), LOCATION 2 (S.N. 016-2032), LOCATION 3 (S.N. 099-0038, -0039), AND LOCATION 4 (S.N. 099-0116): ALL BEAMS, BEARINGS AND OTHER STRUCTURAL STEEL WITHIN FIVE (5) FT. (MEASURED ALONG THE BEAM) OF EITHER SIDE OF THE DECK JOINTS SHALL BE CLEANED PER NEAR WHITE BLAST CLEANING SSPC-SP10. THE EXTERIOR SURFACES AND TOP AND BOTTOM OF THE BOTTOM FLANGE OF THE FASCIA BEAMS (SEE FIGURE 1) SHALL BE CLEANED PER POWER TOOL CLEANING COMMERCIAL GRADE.

FASCIA BEAM PAINTING DETAIL



ILLINOIS DEPARTMENT OF TRANSPORTATION

GENERAL PAINT NOTES

ROUTE	SECTION	COUNTY	TOTAL SHEETS	SHEET NUMBER
VARIOUS	2004-053BP	COOK & WILL	13	4

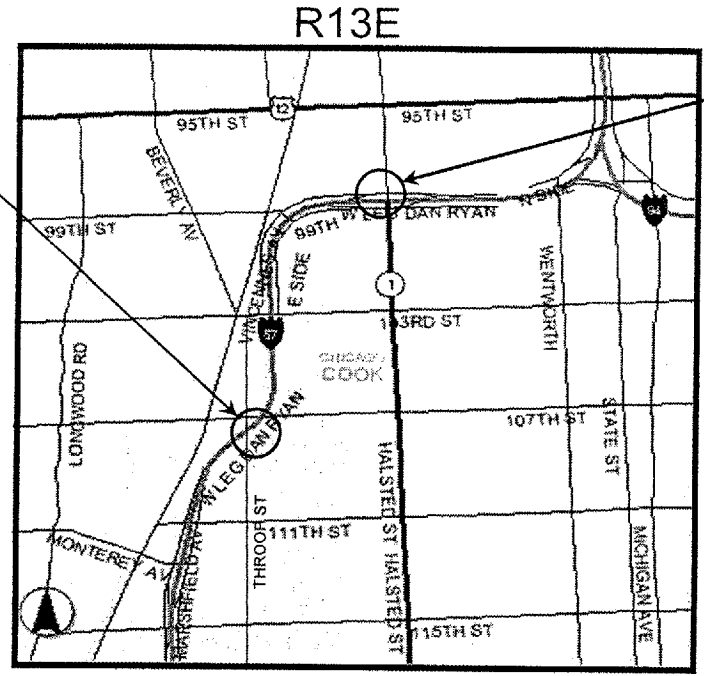
Contract 62790

LOCATION 1 & 2
 SN 016-2031
 107TH ST. OVER I-57

 SN 016-2032
 THROOP OVER I-57

 I-57, 2002 ADT = 126,900
 SPEED LIMIT = 55 MPH

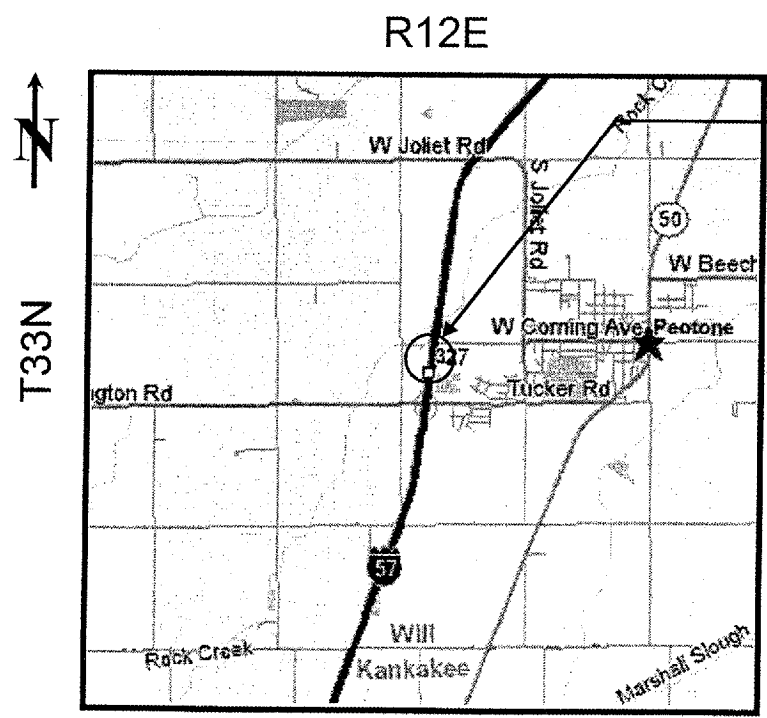
T37N



LOCATION 5
 SN 016-2036
 IL 1 (HALSTED ST) OVER I-57.

 I-57, 2002 ADT = 111,500
 SPEED LIMIT = 55 MPH

CALUMET TWP



T33N

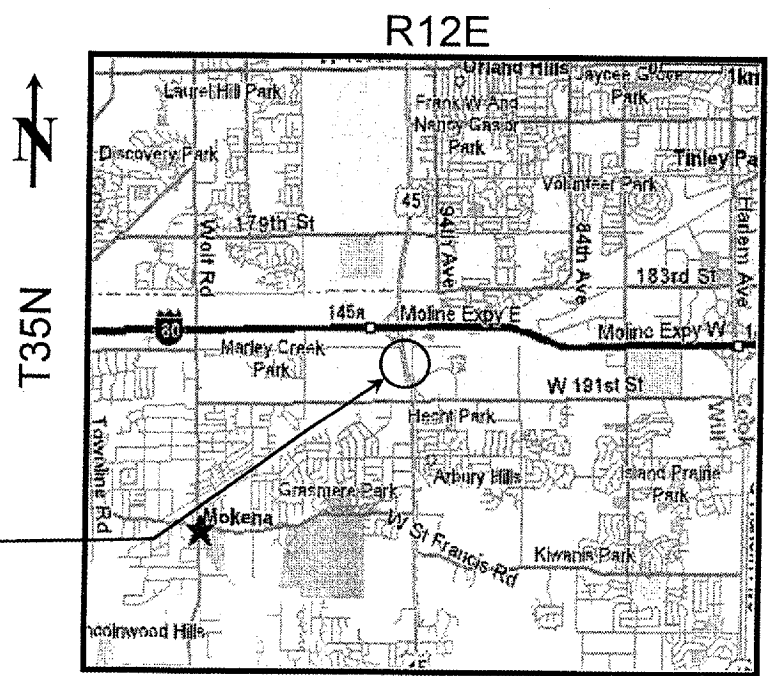
PEOTONE TWP

LOCATION 3
 SN 099-0038, -0039
 I-57 OVER ABANDONED
 CMSTP&P RR

 2001 ADT = 30,600
 SPEED LIMIT = 65 MPH

LOCATION 4
 SN 099-0116
 US 45 OVER IAIS RR

 2002 ADT = 38,700
 SPEED LIMIT = 45 MPH



T35N

FRANKFORT TWP

ILLINOIS DEPARTMENT OF TRANSPORTATION
 LOCATION MAPS

ROUTE	SECTION	COUNTY	TOTAL SHEETS	SHEET NUMBER
VARIOUS	2004-053BP	COOK & WILL	13	5

CONTRACT: 62790

SUMMARY OF QUANTITIES

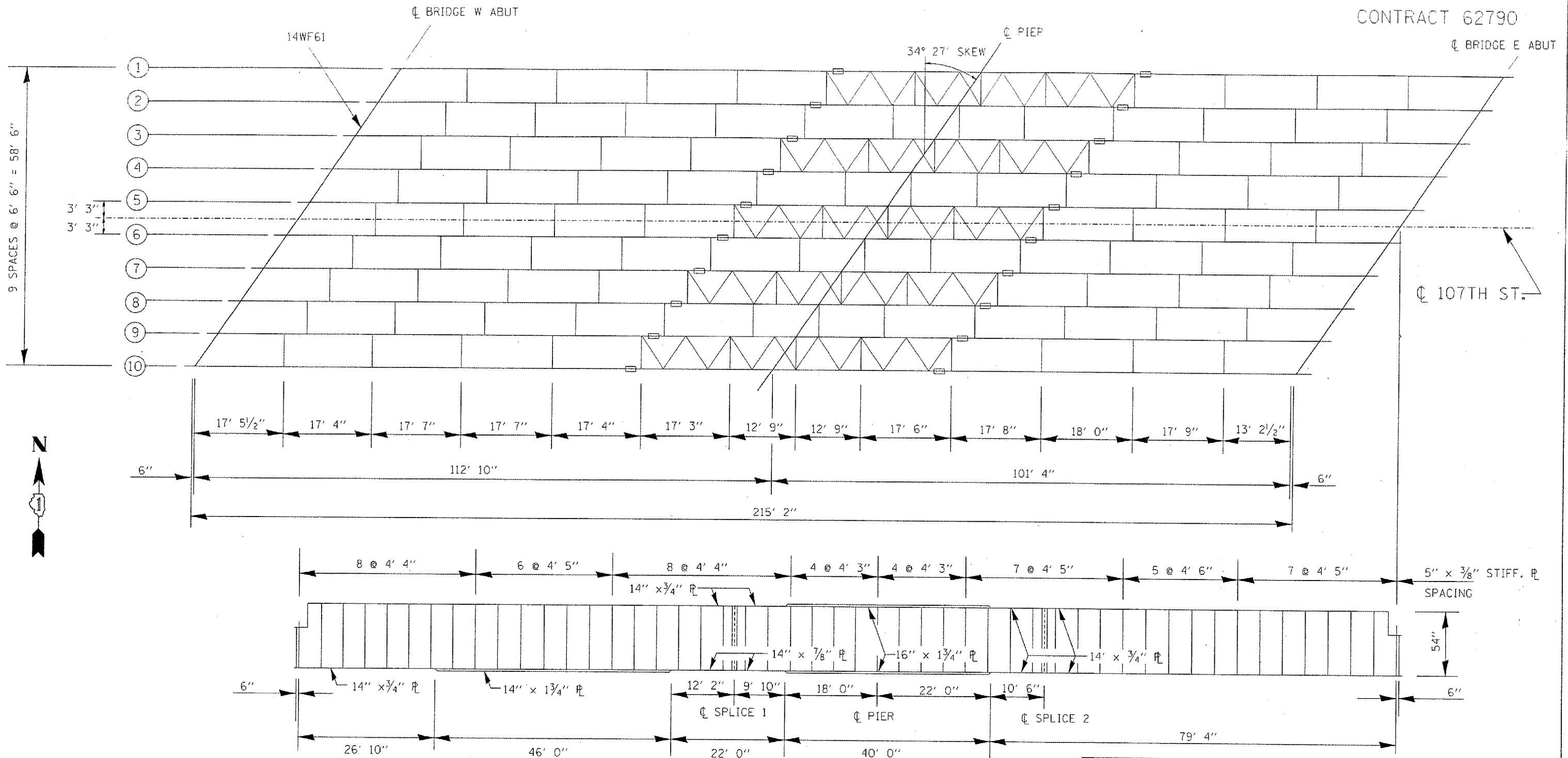
Code No.	Description	Unit	URBAN Total Quantities	CONSTRUCTION TYPE CODE: SFTY - 2A				
				COOK COUNTY		WILL COUNTY		COOK CO.
				LOCATION 1 016-2031	LOCATION 2 016-2032	LOCATION 3 099-0038 & 099-0039	LOCATION 4 099-0116	LOCATION 5 016-2036
50600600	CLEANING AND PAINTING STEEL BRIDGE NO. 1	L SUM	1	1				
50600700	CLEANING AND PAINTING STEEL BRIDGE NO. 2	L SUM	1		1			
50600800	CLEANING AND PAINTING STEEL BRIDGE NO. 3	L SUM	1			1		
50600900	CLEANING AND PAINTING STEEL BRIDGE NO. 4	L SUM	1				1	
50601000	CLEANING AND PAINTING STEEL BRIDGE NO. 5	L SUM	1					1
50606400	CONTAINMENT AND DISPOSAL OF LEAD PAINT CLEANING RESIDUES	L SUM	1	0.1	0.1	0.1	0.1	0.6
67000400	ENGINEER'S FIELD OFFICE, TYPE A	CAL MO	5	1	1	1	1	1
67100100	MOBILIZATION	L SUM	1	0.2	0.2	0.2	0.2	0.2
70102630	TRAFFIC CONTROL AND PROTECTION, STANDARD 701601	L SUM	1				1	
X0322467	TEMPORARY INFORMATION SIGNING FOR LANE CLOSURE	SQ FT	48				48	
X0567500	BRIDGE CLEANING AND PAINTING WARRANTY	L SUM	1					1
X7011015	TRAFFIC CONTROL AND PROTECTION (EXPRESSWAYS)	L SUM	1	0.3	0.3	0.1		0.3
Z0048665	RAILROAD PROTECTIVE LIABILITY INSURANCE	L SUM	1				1	

ILLINOIS DEPARTMENT OF TRANSPORTATION

SUMMARY OF QUANTITIES

ROUTE	SECTION	COUNTY	TOTAL SHEETS	SHEET NUMBER
VARIOUS	2004-053BP	COOK & WILL	13	6

CONTRACT 62790



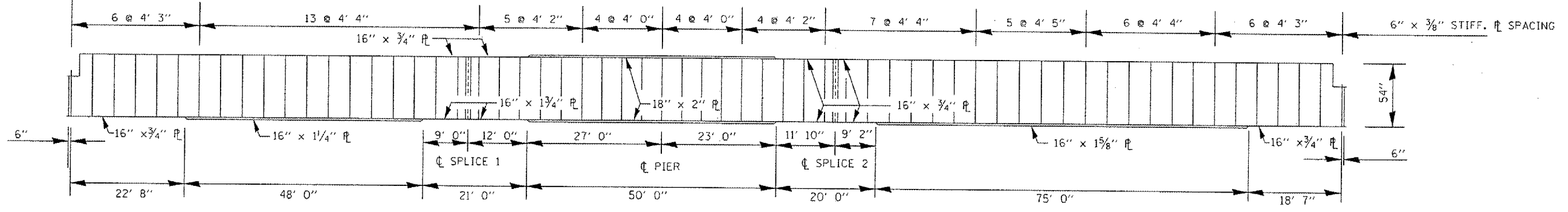
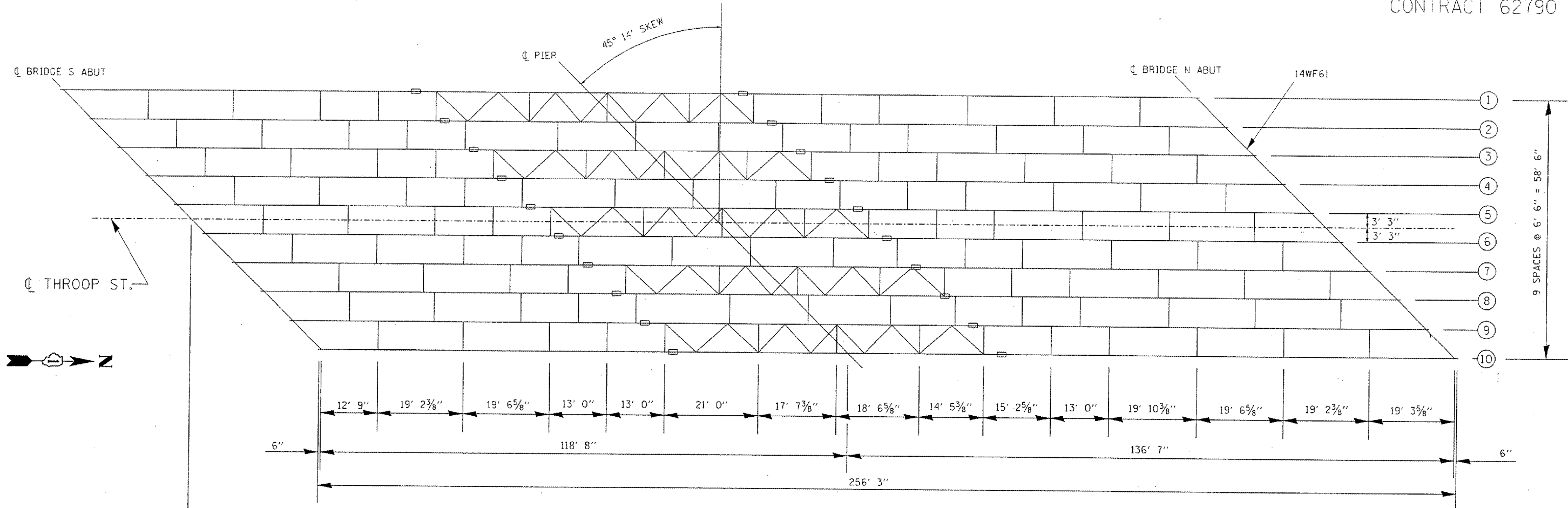
ILLINOIS DEPARTMENT OF
TRANSPORTATION

FRAMING PLAN - SN: 016-2031
LOCATION 1

117TH STREET OVER I-57

ROUTE VARIOUS	SECTION 2004-053BP	COUNTY COOK & WILL	TOTAL SHEETS 13	SHEET NUMBER 7
------------------	-----------------------	-----------------------	--------------------	-------------------

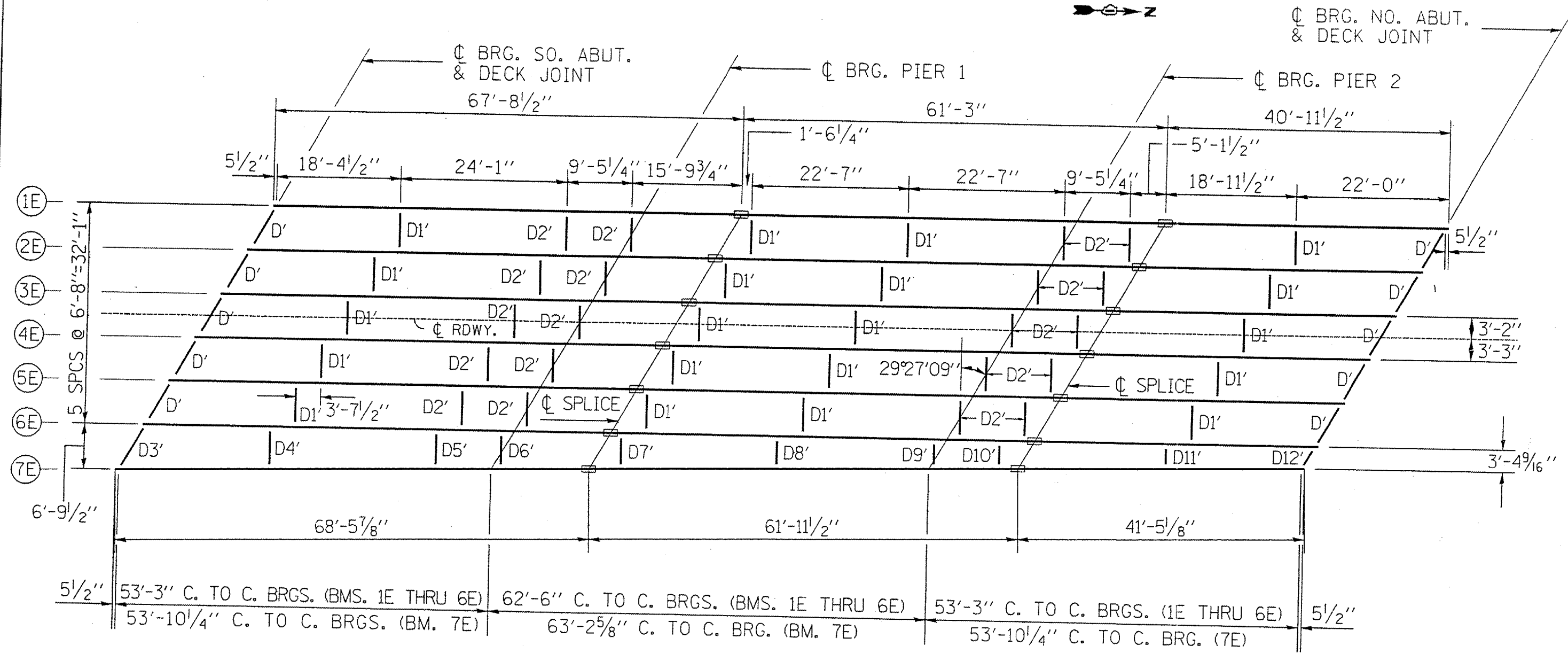
CONTRACT 62790



ILLINOIS DEPARTMENT OF
 TRANSPORTATION
 FRAMING PLAN - SN: 016-2032
 LOCATION 2
 THROOP STREET OVER I-57

ROUTE	SECTION	COUNTY	TOTAL SHEETS	SHEET NUMBER
VARIOUS	2004-053BP	COOK & WIL	13	8

CONTRACT 62790



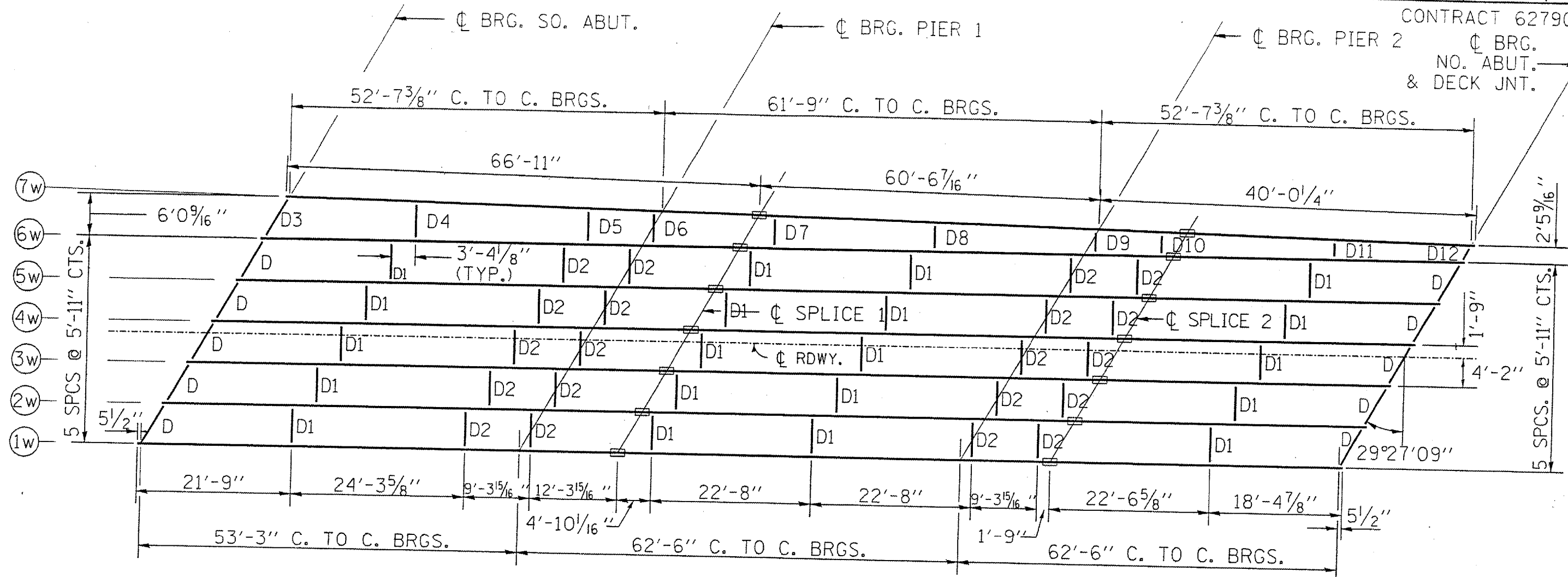
DIAPHRAGMS

D', D3' & D12'	12 WF 40
D1', D2', D4', D5', D6', D7', D8', D9', D10' & D11'	16 WF 36

ALL GIRDERS 33WF130

ILLINOIS DEPARTMENT OF
TRANSPORTATION
FRAMING PLAN SN: 099-0038
LOCATION 3
I-57 NB OVER
CMSTP&P RAILROAD
(Abandoned)

ROUTE VARIOUS	SECTION 2004-053BP	COUNTY COOK & WILL	TOTAL SHEETS 13	SHEET NUMBER 9
------------------	-----------------------	-----------------------	--------------------	-------------------



CONTRACT 62790
 Ø BRG. NO. ABUT. & DECK JNT.

DIAPHRAGMS

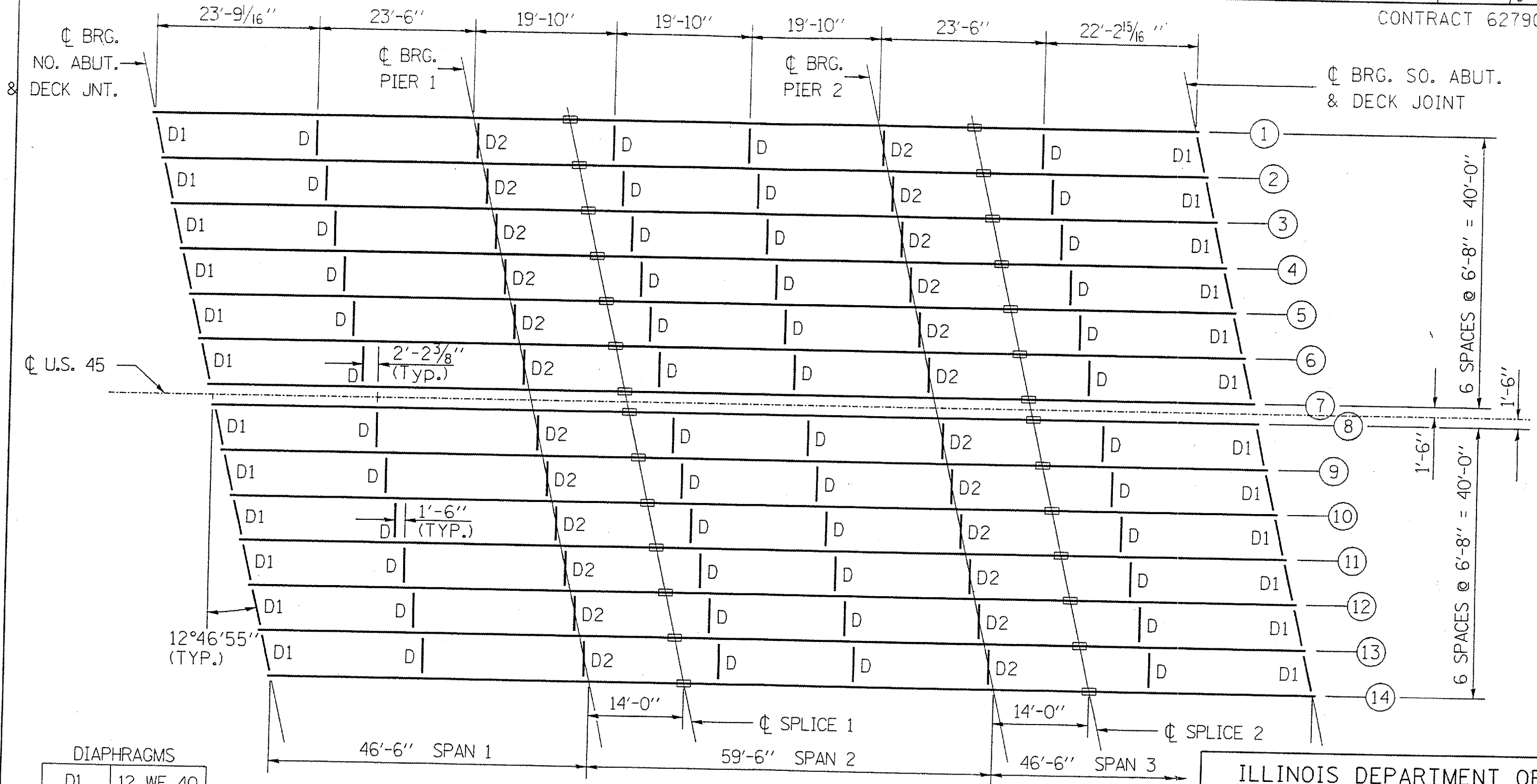
D, D3 & D12	12 WF 40
D1, D2, D4, D5, D6, D7, D8, D9, D10 & D11	16 WF 36

All Girders 33WF130

ILLINOIS DEPARTMENT OF
 TRANSPORTATION
 FRAMING PLAN SN: 099-0039
 LOCATION 3
 I-57 SB OVER
 CMSTP&P RAILROAD
 (Abandoned)

ROUTE VARIOUS	SECTION 2004-053BP	COUNTY COOK & WILL	TOTAL SHEETS 13	SHEET NUMBER 10
------------------	-----------------------	-----------------------	--------------------	--------------------

CONTRACT 62790



DIAPHRAGMS

D1	12 WF 40
D2	16 WF 36

ALL GIRDERS ARE 30 WF 124

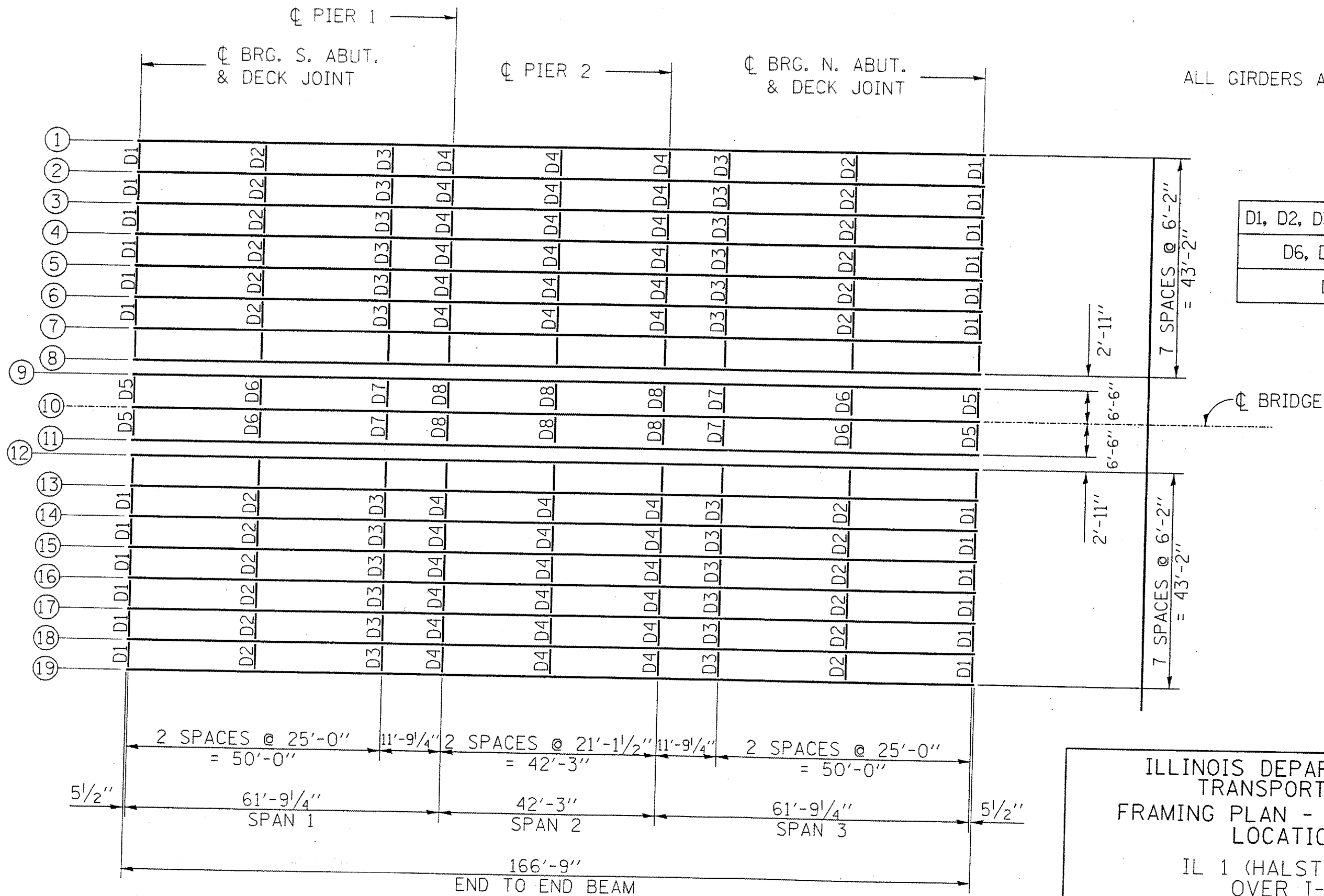
ILLINOIS DEPARTMENT OF
TRANSPORTATION
FRAMING PLAN SN: 099-0116
LOCATION 4
U.S. 45 OVER
IAIS RAILROAD



ROUTE VARIOUS	SECTION 2004-053BP	COUNTY COOK & WILL	TOTAL SHEETS 13	SHEET NUMBER 11
------------------	-----------------------	-----------------------	--------------------	--------------------

CONTRACT 62790

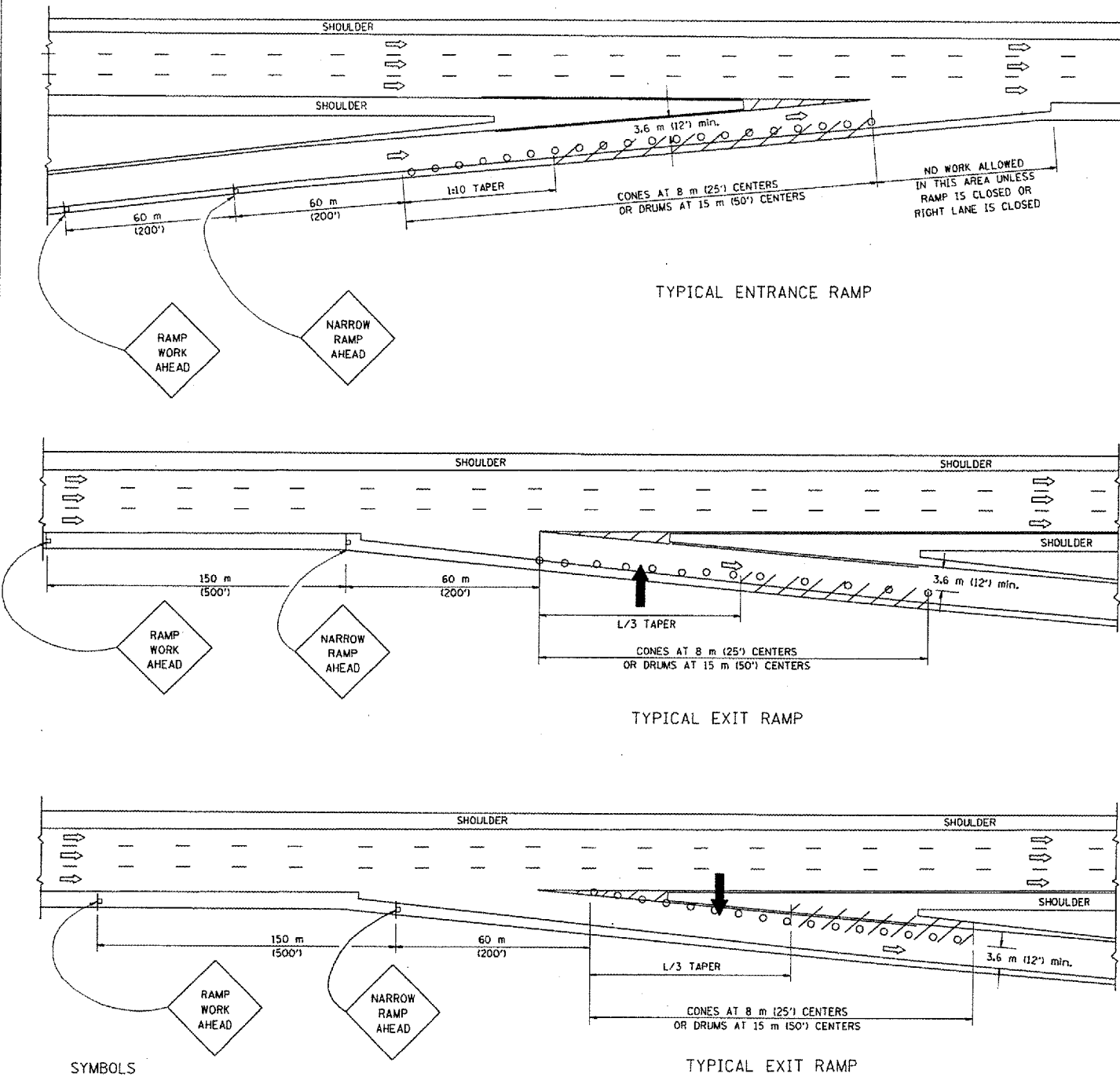
ALL GIRDERS ARE 33 WF 152



DIAPHRAGMS	
D1, D2, D3, D4 & D5	16 WF 36
D6, D7 & D8	16 WF 36
D9	18 WF 60

ILLINOIS DEPARTMENT OF
 TRANSPORTATION
 FRAMING PLAN - SN: 016-2036
 LOCATION 5
 IL 1 (HALSTED ST)
 OVER I-57

PARTIAL RAMP CLOSURE DETAILS



SYMBOLS

- ARROWBOARD
- WORK AREA
- SIGN ON PORTABLE OR PERMANENT SUPPORT
- FLAGGER WITH CONTROL SIGN
- DRUM WITH MONO-DIRECTIONAL STEADY BURNING LIGHT
- CONES - 700 (28) IN HEIGHT

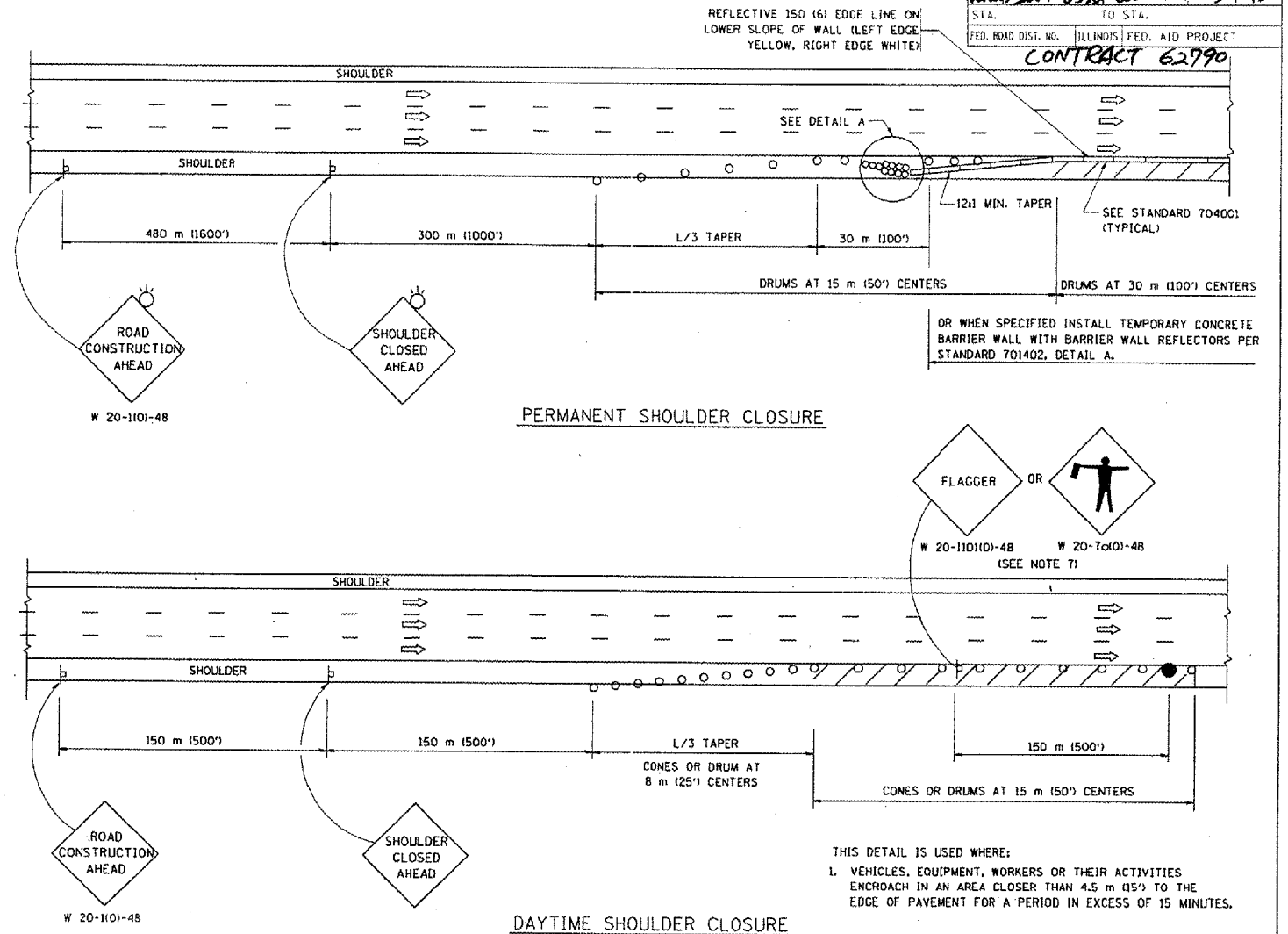
GENERAL NOTES

1. THE "L" DISTANCE EQUALS:

SPEED LIMIT	FORMULAS
80 km/h (45 mph) OR GREATER:	METRIC: $L=0.65(W/S)$ ENGLISH: $L=(W/S)$

W = WIDTH OF OFFSET IN METERS (FEET)
S = NORMAL POSTED SPEED KM/H (MPH)
2. PLASTIC DRUMS WITH HIGH PERFORMANCE REFLECTIVE SHEETING AND STEADY BURNING LIGHTS ARE REQUIRED FOR ALL NIGHTTIME CLOSURES.
3. ALL SIGNS SHALL BE POST MOUNTED IF THE CLOSURE TIME EXCEEDS FOUR DAYS.
4. FLASHING LIGHTS SHALL BE USED DURING THE HOURS OF DARKNESS AND SHALL BE INSTALLED ABOVE THE FIRST TWO SETS OF SIGNS.

SHOULDER CLOSURE DETAILS



F.A.P. DIST.	SECTION	COUNTY	TOTAL SHEETS	SHEET NO.
Verona 2001-0508	COOK	ILLINOIS	13	12
STA.	TO STA.		CONTRACT 62790	
FED. ROAD DIST. NO.	ILLINOIS FED. AID PROJECT			

ARRAY DESIGN PER MANUFACTURER TO BE NCHRP 350 COMPLIANT FOR POSTED SPEED.

DETAIL "A"
IMPACT ATTENUATOR, TEMPORARY
(SEE NOTE 5)

5. THE IMPACT ATTENUATOR, TEMPORARY IS NOT REQUIRED WHEN THE TEMPORARY CONCRETE BARRIER WALL IS OUTSIDE THE CLEAR ZONE OR IS TIED INTO THE EXISTING GUARDRAIL. IF OFFSET IS LESS THAN 5 FEET USE "TRAFFIC BARRIER TERMINAL, TYPE III, TEMPORARY" DEVICE TO MEET NCHRP350 FOR POSTED SPEED.
6. AUTHORIZATION FROM THE DISTRICT'S BUREAU OF TRAFFIC IS REQUIRED FOR ALL FREEWAY CLOSURES.
7. THE FLAGGER AND FLAGGER SIGN ARE REQUIRED AT THE ABOVE WORK SITES WHEN:
 - a. FOUR OR MORE WORK VEHICLES ENTER THE TRAFFIC LANES IN A ONE HOUR PERIOD.
 - b. THE WORK ACTIVITY REQUIRES FREQUENT ENCROACHMENT INTO THE LANE OPEN TO TRAFFIC.
 THE FLAGGER SHALL BE STATIONED APPROXIMATELY 30 m (100') TO 60 m (200') IN ADVANCE OF THE WORKERS.

REVISIONS	
NAME	DATE
DWS	11/96
JAF	12/02
NCHRP 350	04/03

ALL DIMENSIONS ARE IN MILLIMETERS (INCHES) UNLESS OTHERWISE SHOWN.

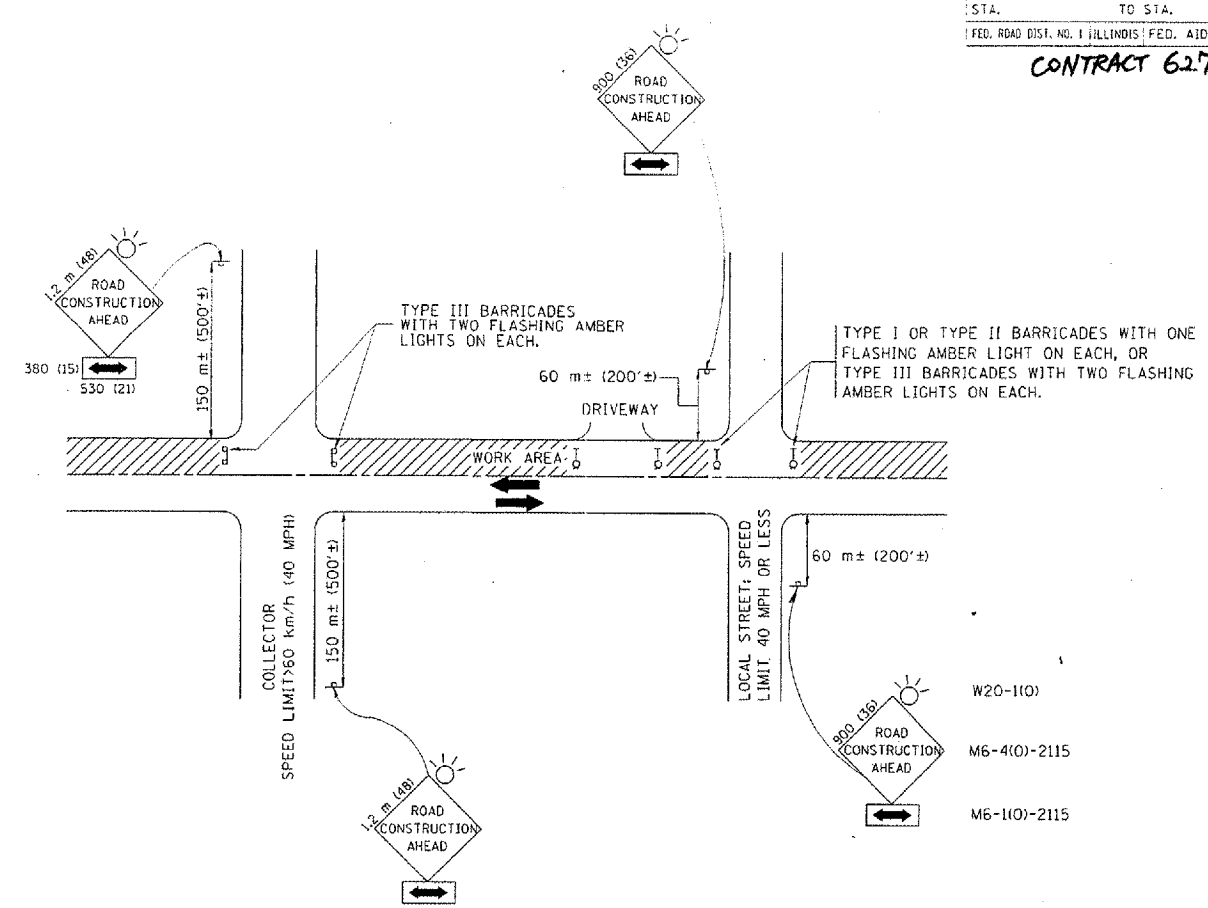
ILLINOIS DEPARTMENT OF TRANSPORTATION

TRAFFIC CONTROL DETAILS FOR FREEWAY SHOULDER CLOSURES PARTIAL RAMP CLOSURES

SCALE: NONE
DATE: 05/06/2003

DRAWN BY: [blank]
DESIGNED BY: DWS
CHECKED BY: [blank]
TC-17

CONTRACT 62790



TRAFFIC CONTROL AND PROTECTION FOR SIDE ROADS, INTERSECTIONS, AND DRIVEWAYS

NOTES:

- A. FOR NO LANE RESTRICTION ON THE SIDE ROAD OR DRIVEWAYS
- SIDE ROAD WITH A SPEED LIMIT OF 60 km/h (40 MPH) OR LESS AS SHOWN ON THE DRAWING AND AS DIRECTED BY THE ENGINEER:
 - ONE ROAD CONSTRUCTION AHEAD SIGN 900x900 (36x36) WITH A FLASHER AND FLAG MOUNTED ON IT APPROXIMATELY 60 m (200') IN ADVANCE OF THE MAIN ROUTE.
 - THE CLOSED PORTION OF THE MAIN ROUTE SHALL BE PROTECTED BY BLOCKING WITH TYPE I, TYPE II OR TYPE III BARRICADES, 1/3 OF THE CROSS SECTION OF THE CLOSED PORTION.
 - SIDE ROAD WITH A SPEED LIMIT GREATER THAN 60 km/h (40 MPH) AS SHOWN ON THE DRAWING AND AS DIRECTED BY THE ENGINEER:
 - ONE ROAD CONSTRUCTION AHEAD SIGN 1.2 m x 1.2 m (48x48) WITH A FLASHER MOUNTED ON IT APPROXIMATELY 150 m (500') IN ADVANCE OF THE MAIN ROUTE.
 - THE CLOSED PORTION OF THE MAIN ROUTE SHALL BE PROTECTED BY BLOCKING WITH TYPE III BARRICADES, 1/2 OF THE CROSS SECTION OF THE CLOSED PORTION.
 - WHEN THE SIDE ROAD LIES BETWEEN THE BEGINNING OF THE MAINLINE SIGNING AND THE WORK ZONE, A SINGLE HEADED ARROW (M6-1) SHALL BE USED IN LIEU OF THE DOUBLE HEADED ARROW (M6-4).
- B. FOR A LANE CLOSURE ON A SIDE ROAD OR DRIVEWAY:
- USE APPLICABLE PORTIONS OF THE TYPICAL APPLICATION OF TRAFFIC CONTROL DEVICES (STD. 701501, STD. 701606 OR THE APPROPRIATE STANDARD). THE SPACING OF SIGNS AND BARRICADES SHALL BE ADJUSTED FOR FIELD CONDITIONS AS DIRECTED BY THE ENGINEER. THE DIRECTIONAL ARROW SHALL BE COVERED OR REMOVED WHEN NO LONGER CONSISTENT WITH THE SIDE ROAD LANE CLOSURE.
- C. ADVANCE WARNING SIGNS ARE TO BE OMITTED ON DRIVEWAY UNLESS OTHERWISE NOTED.
- D. THE TRAFFIC CONTROL AND PROTECTION FOR SIDE ROADS, INTERSECTIONS, AND DRIVEWAYS SHALL BE INCIDENTAL TO THE COST OF SPECIFIED TRAFFIC CONTROL STANDARDS OR ITEMS.

REVISIONS	
NAME	DATE
LHA	6/89
T. RAMMACHER	09/08/94
J. OBERLE	10/18/95
A. HOUSEH	03/06/96
A. HOUSEH	10/15/96
T. RAMMACHER	01/06/00

ILLINOIS DEPARTMENT OF TRANSPORTATION
 TRAFFIC CONTROL AND PROTECTION
 FOR
 SIDE ROADS, INTERSECTIONS, AND
 DRIVEWAYS

SCALE: VERT.
 HORIZ.
 DATE 10/18/2002

DRAWN BY
 CHECKED BY
 TC-10