

62796

F.A.I. RTE.	SECTION	COUNTY	TOTAL SHEETS	SHEET NO.
90/94	2004-0571	COOK	47	1

STATE OF ILLINOIS  
DEPARTMENT OF TRANSPORTATION  
DIVISION OF HIGHWAYS

D-91-419-01

INDEX OF SHEETS

SHEET	DESCRIPTION
1	COVER SHEET
2	GENERAL NOTES AND PROJECT COMMITMENTS
3-6	SUGGESTED CONSTRUCTION SCHEDULE
7	SUMMARY OF QUANTITIES
8	PROPOSED TYPICAL SECTIONS
9	SCHEDULE OF QUANTITIES
10-20	ALIGNMENT PLANS, SURVEY TIES AND CONTROL POINTS
21-37	EXISTING AND PROPOSED ROADWAY PLANS
38-43	ROADWAY DETAILS
44	TRAFFIC CONTROL AND PROTECTION FOR SIDE ROADS, INTERSECTIONS, AND DRIVEWAYS
45	TEMPORARY INFORMATION SIGNING
46	ELECTRICAL INFRASTRUCTURE PLAN
47	METER PEDESTAL FOUNDATION DETAIL

PLANS FOR PROPOSED  
FEDERAL AID HIGHWAY

F.A.I. ROUTE 90/94 (DAN RYAN EXPRESSWAY)  
SECTION 2004-0571  
PROJECT: IM-094-3(392)057  
INSTALLATION OF SIDEWALKS, DRIVEWAYS, AND ALLEYS ALONG WENTWORTH AVENUE BETWEEN 59TH STREET AND 47TH STREET  
COOK COUNTY  
C-91-281-04

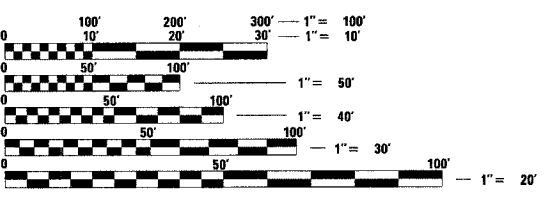
PROJECT LOCATED IN CITY OF CHICAGO

IDOT HIGHWAY STANDARDS

STANDARD	DESCRIPTION
000001-04	STANDARD SYMBOLS, ABBREVIATIONS, AND PATTERNS
001006	DECIMAL OF AN INCH AND OF A FOOT
606001-02	CONCRETE CURB AND COMBINATION CURB AND GUTTER
606301-02	PORTLAND CEMENT CONCRETE ISLANDS AND MEDIANS
701801-03	LANE CLOSURE, MULTILANE, 1W OR 2W, CROSSWALK OR SIDEWALK CLOSURE FOR SPEEDS < 45 MPH
702001-05	TRAFFIC CONTROL DEVICES
701601-04	URBAN LANE CLOSURE, MULTILANE, 1W OR 2W WITH NONTRAVERSABLE MEDIAN

DESIGN DESIGNATION

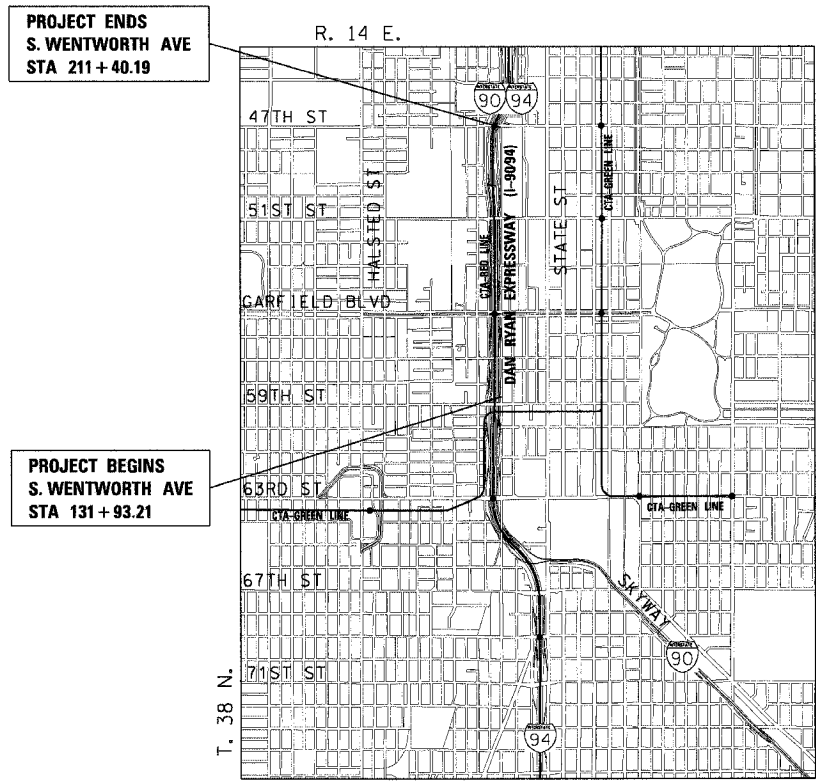
WENTWORTH AVE:	ADT (2020)	DESIGN SPEED	POSTED SPEED
6259 (20) URBAN COLLECTOR	11,000	30	25



FULL SIZE PLANS HAVE BEEN PREPARED USING STANDARD ENGINEERING SCALES. REDUCED SIZED PLANS WILL NOT CONFORM TO STANDARD SCALES. IN MAKING MEASUREMENTS ON REDUCED PLANS, THE ABOVE SCALES MAY BE USED.

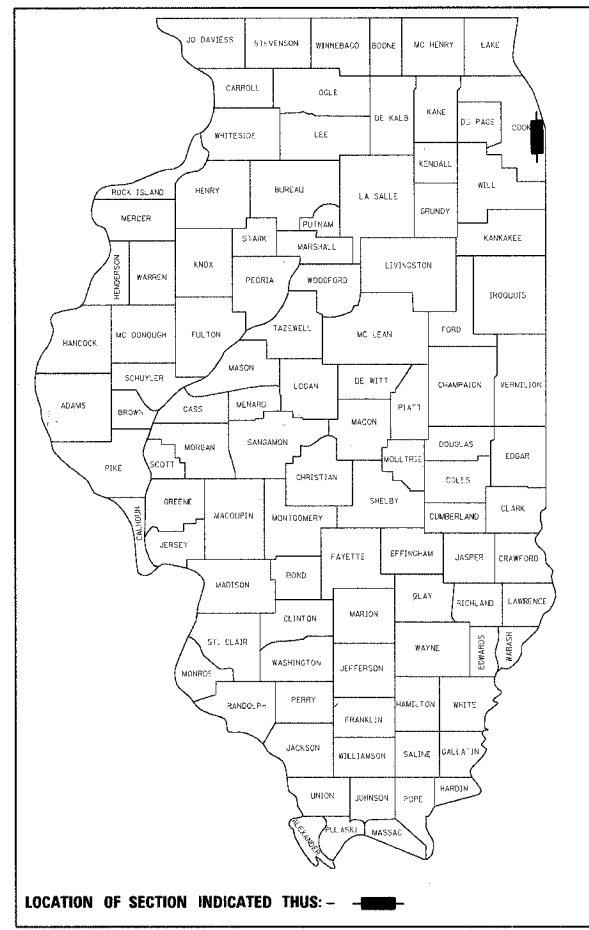
CUAN:  
CHICAGO UTILITY ALERT NETWORK  
(312) 744-7000

CONTRACT NO. 62796



LOCATION MAP

0 1/2 MILE 1 MILE  
1" = 1/2 MILE  
GROSS LENGTH OF PROJECT = 7,947 FT (1.505 MILES)  
NET LENGTH OF PROJECT = 7,947 FT (1.505 MILES)



LOCATION OF SECTION INDICATED THUS: [Symbol]



*Raspal Bajwa* 11/30/05  
RASPAL S. BAJWA EXPIRES 11/30/05  
SHEET NOS. DATE



*John A. Lukowski* 11/30/05  
JOHN A. LUKOWSKI EXPIRES 11/30/05  
SHEET NOS. DATE

STATE OF ILLINOIS  
DEPARTMENT OF TRANSPORTATION  
DIVISION OF HIGHWAYS

SUBMITTED March 19, 2005

*Dina O'Keefe/AP*  
DEPUTY DIRECTOR OF HIGHWAYS, REGION ENGINEER

May 13, 2005  
*Mike Hine/ED*  
ENGINEER OF DESIGN AND ENVIRONMENT

May 13, 2005  
*Victor Modesto/D*  
DIRECTOR OF HIGHWAYS, CHIEF ENGINEER

PRINTED BY THE AUTHORITY OF THE STATE OF ILLINOIS



INFRASTRUCTURE ENGINEERING, INC.

**CTE ENGINEERS**  
CONSOER TOWNSEND ENVIRODYNE ENGINEERS, INC.  
303 EAST WACKER DRIVE, SUITE 600  
CHICAGO ILLINOIS 60601-5212, PHONE: (312) 938-0300

DISTRICT ONE DESIGN/CONSULTANT SERVICES PROJECT MANAGER  
RAJENDRA SHAH (847) 705-4437