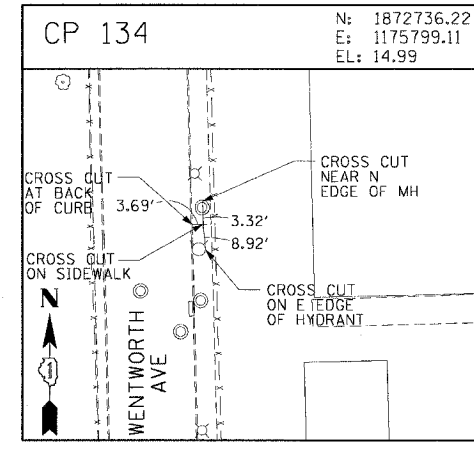
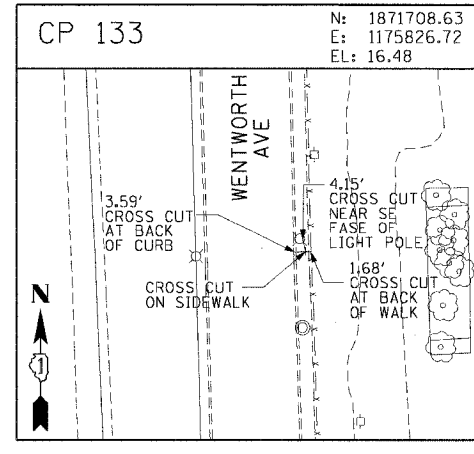
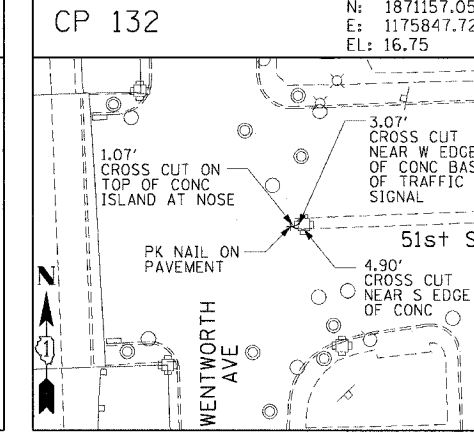
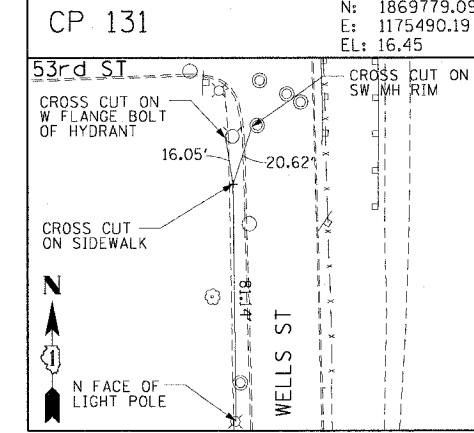
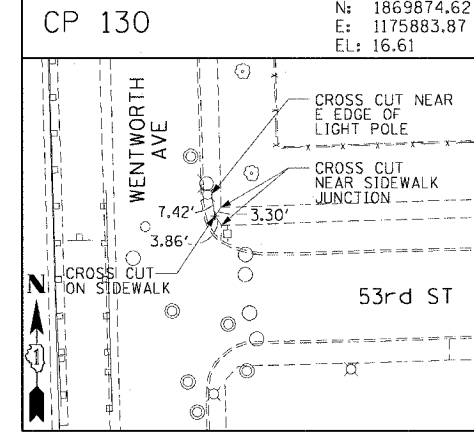
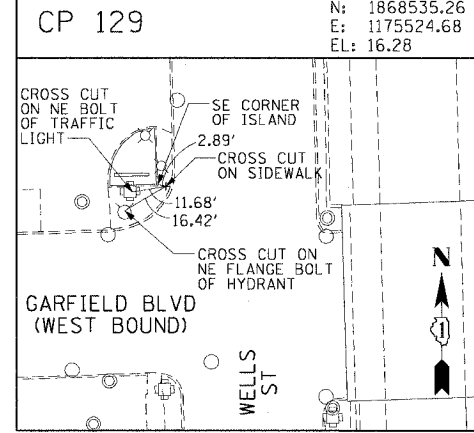
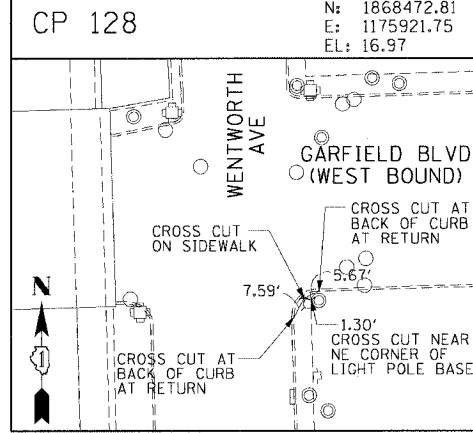
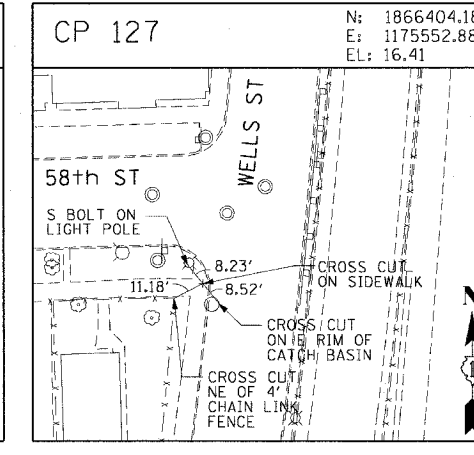
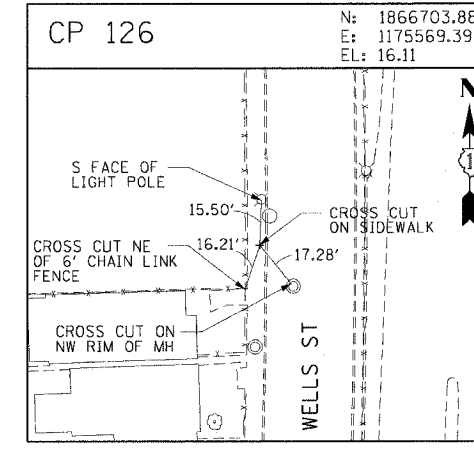
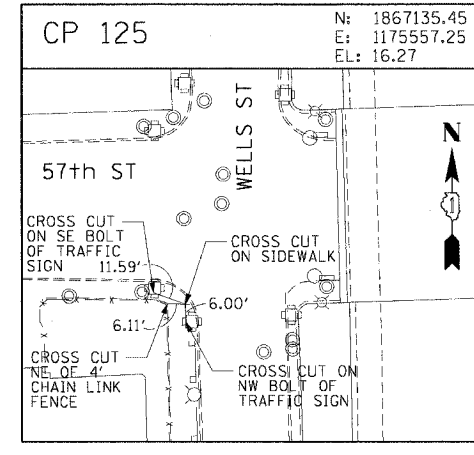
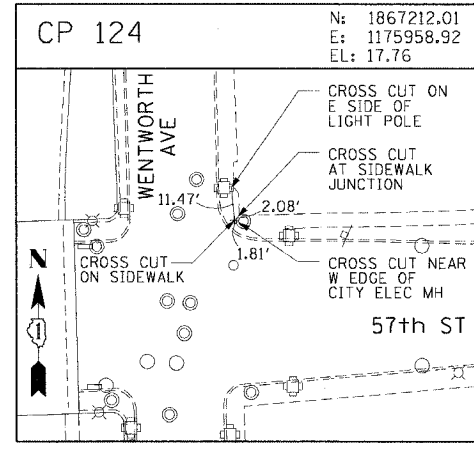
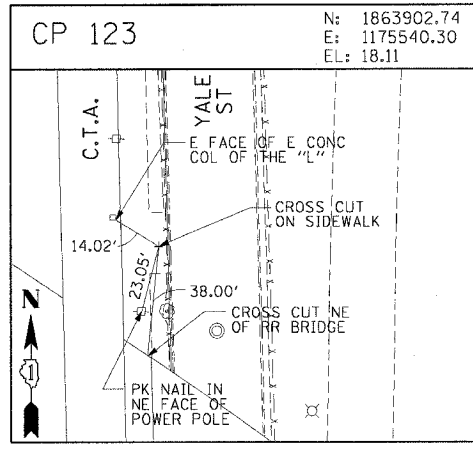
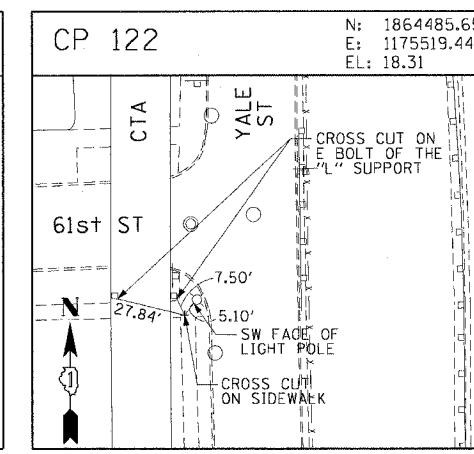
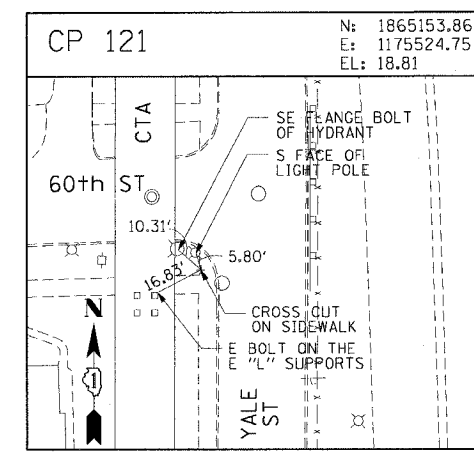
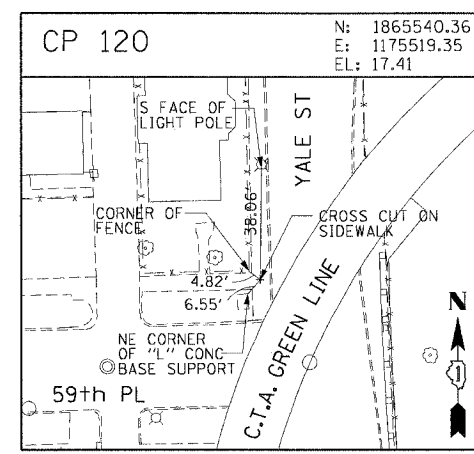
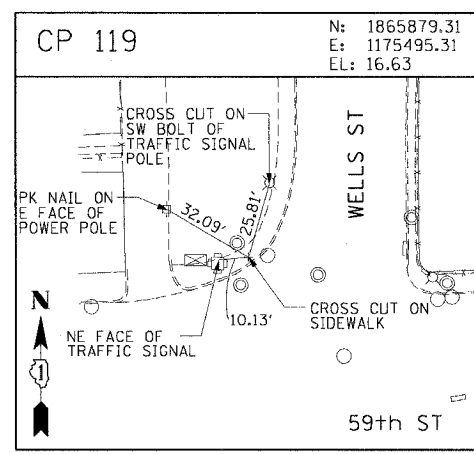
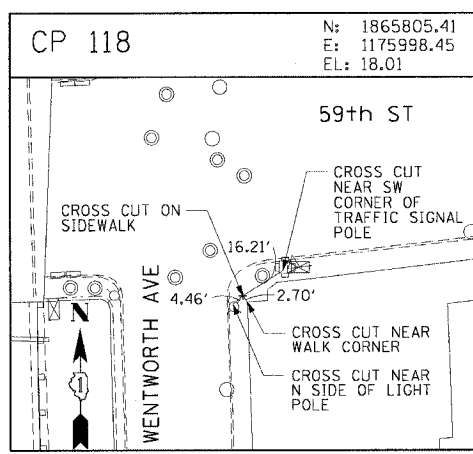


F.A.I. RTE.	SECTION	COUNTY	TOTAL SHEETS	SHEET NO.
90/94	2004-0571	COOK	47	18
STA.	TO STA.			
FED. ROAD DIST. NO. 1 ILLINOIS FED. AID PROJECT				
62796				



REVISIONS	
NAME	DATE

ILLINOIS DEPARTMENT OF TRANSPORTATION
 F.A.I. 90/94 (DAN RYAN EXPRESSWAY)
 59th ST TO 47th ST (WENTWORTH AVE SIDEWALKS)

SURVEY TIES AND CONTROL POINTS

SCALE: 1"=30'
 DATE: MARCH 4, 2005

DRAWN BY: LC
 CHECKED BY: JAL

m:\p\0468\civil\19-04\19-04.dwg c:\p\19-04\19-04.dwg 02/24/2005 04:56:16 PM