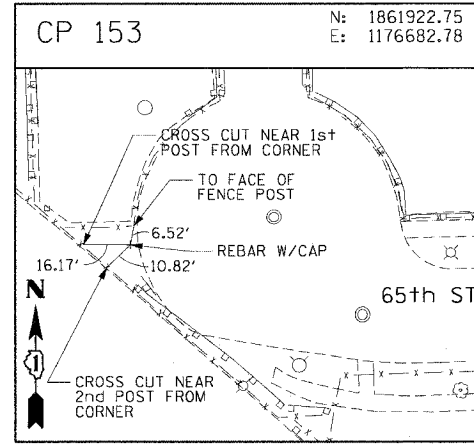
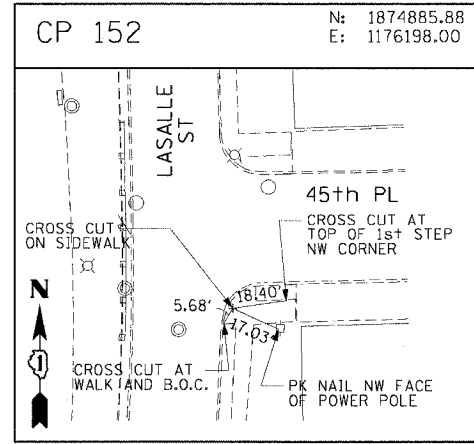
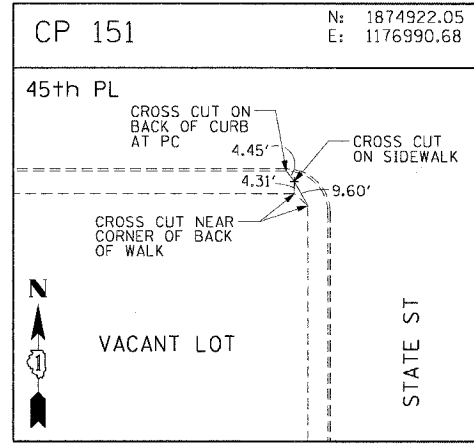
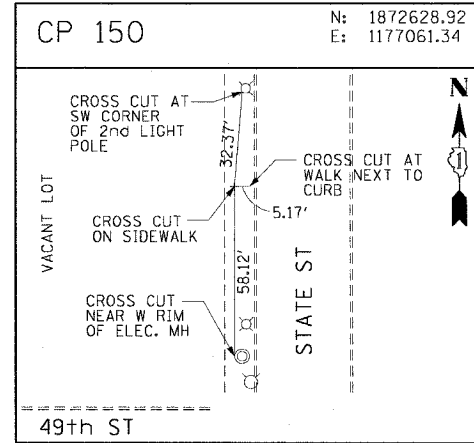
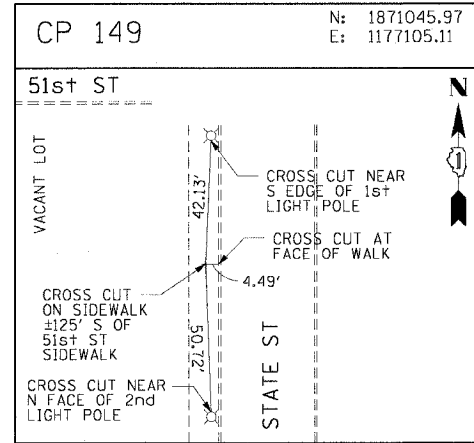
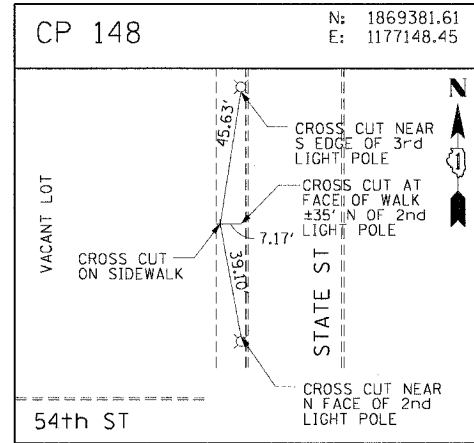
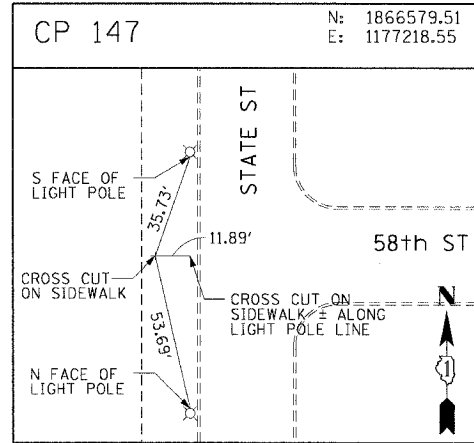
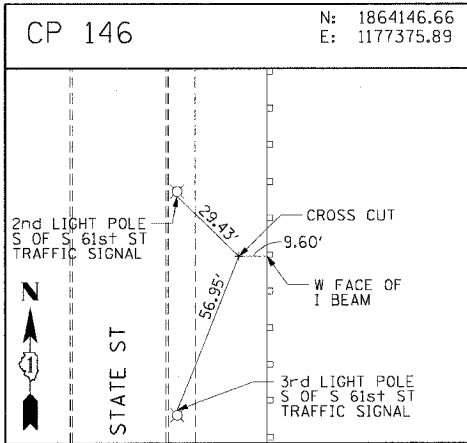
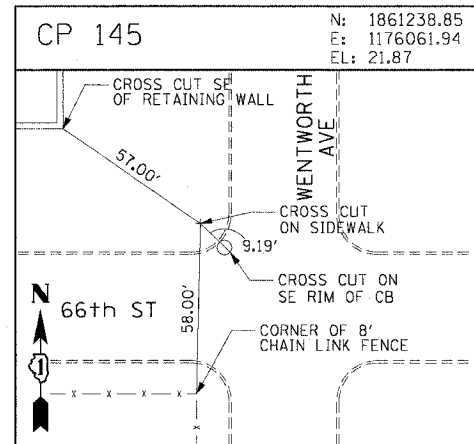
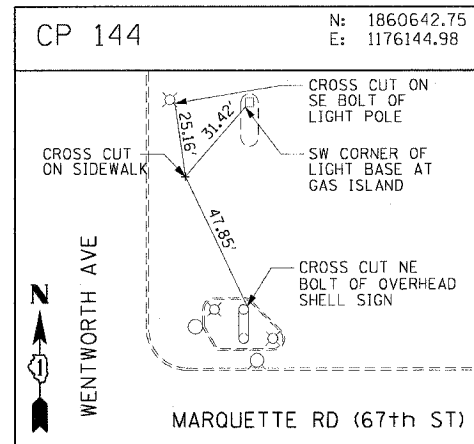
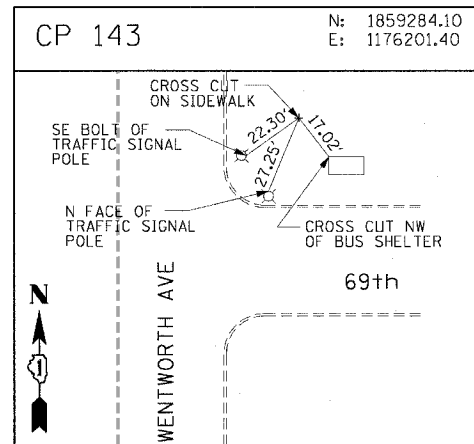
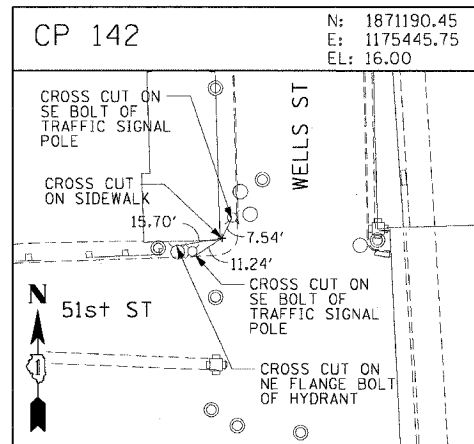
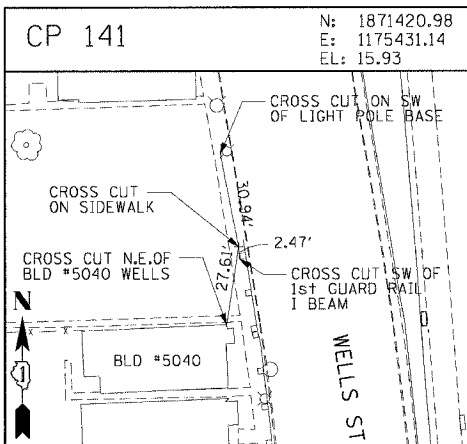
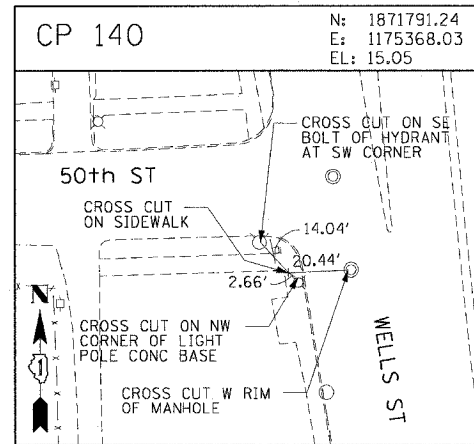
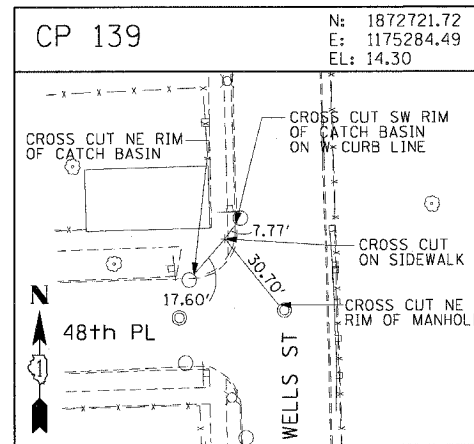
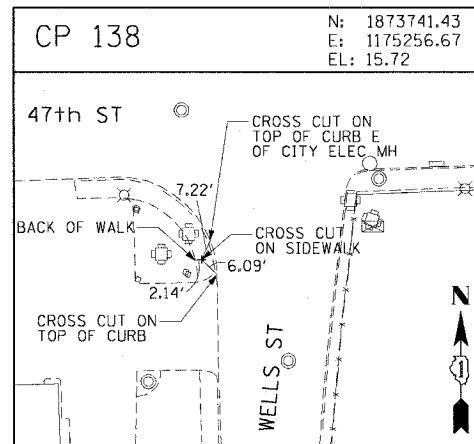
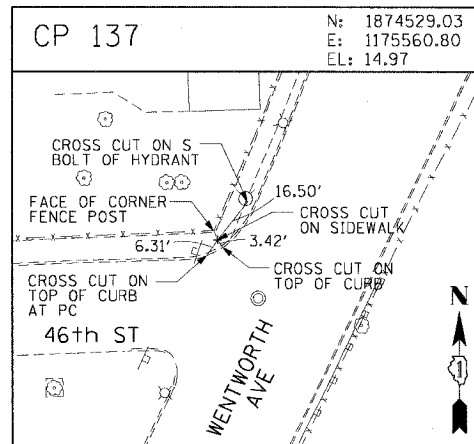
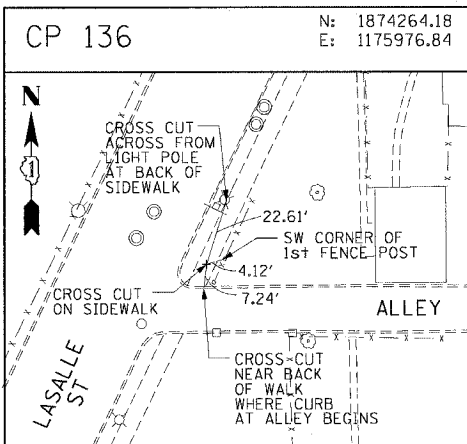


F.A.I. RTE.	SECTION	COUNTY	TOTAL SHEETS	SHEET NO.
90/94	2004-0571	COOK	47	19
STA.	TO STA.			
FED. ROAD DIST. NO. 1 ILLINOIS FED. AID PROJECT				

62796



REVISIONS	
NAME	DATE

ILLINOIS DEPARTMENT OF TRANSPORTATION
F.A.I. 90/94 (DAN RYAN EXPRESSWAY)
59th ST TO 47th ST (WENTWORTH AVE SIDEWALKS)
SURVEY TIES AND CONTROL POINTS

SCALE: 1"=30'
DATE: MARCH 4, 2005

DRAWN BY: LC
CHECKED BY: JAL

m:\p04660\90\94\94-0571\94-0571-19\94-0571-19-19.dwg