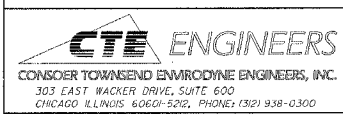
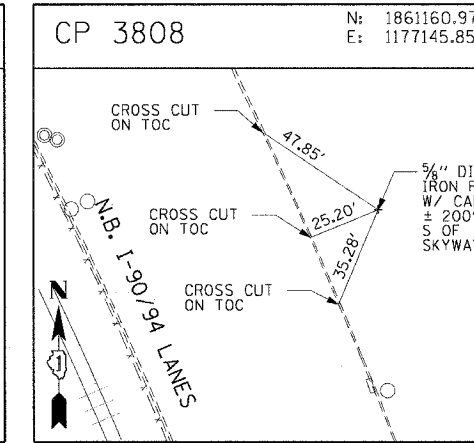
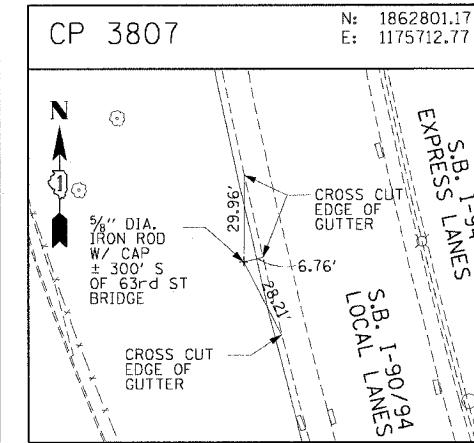
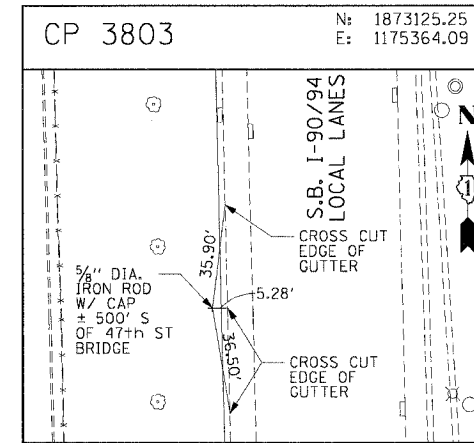
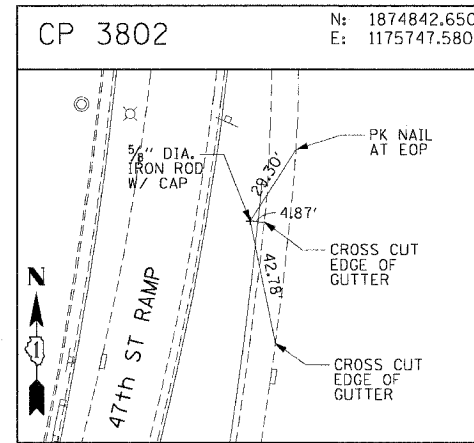
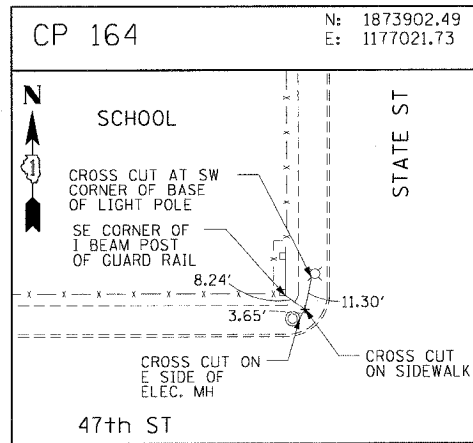
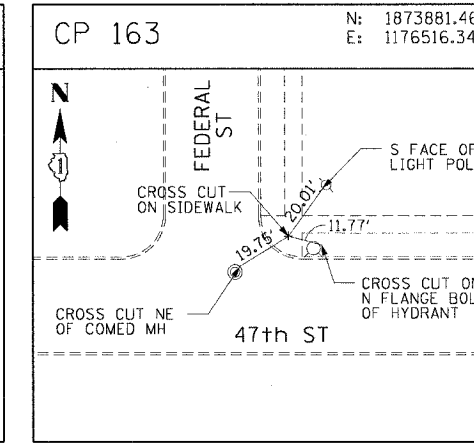
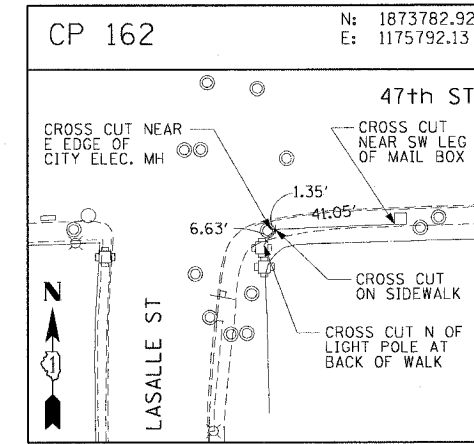
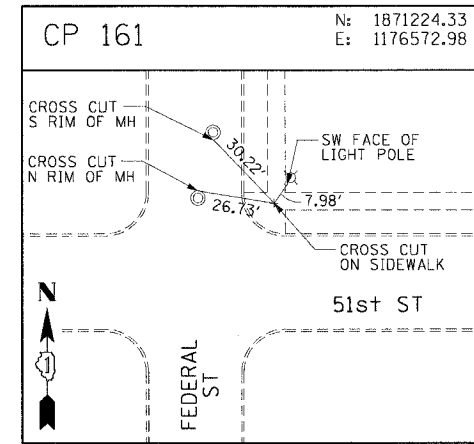
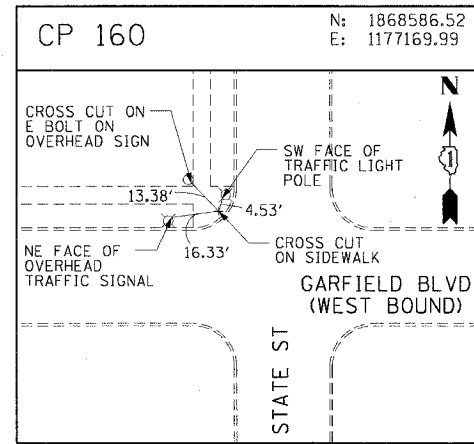
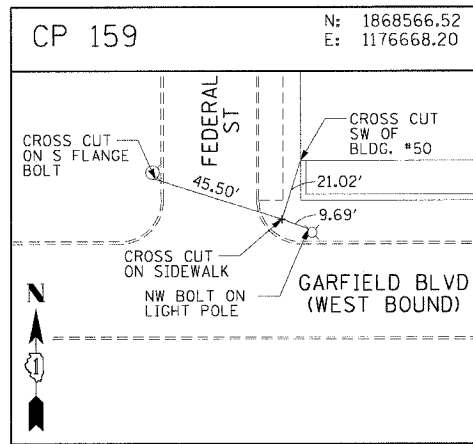
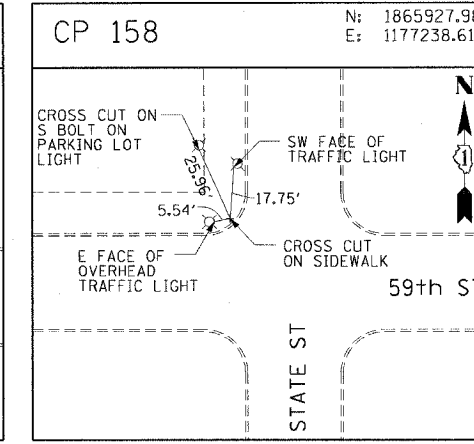
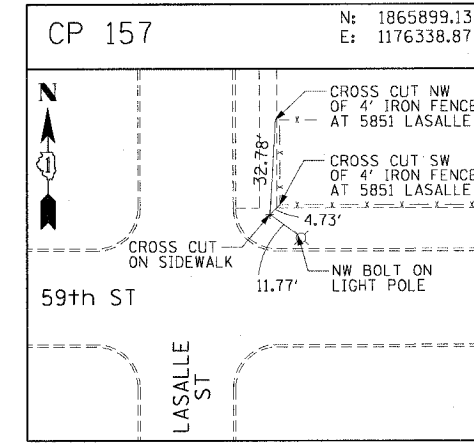
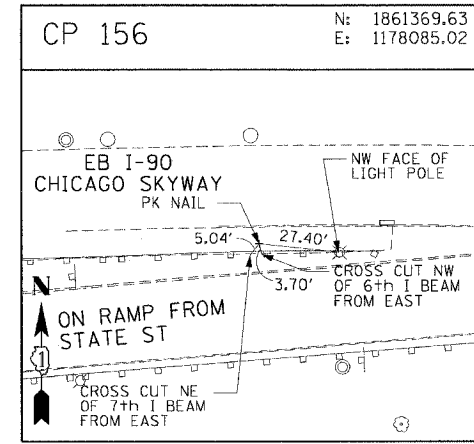
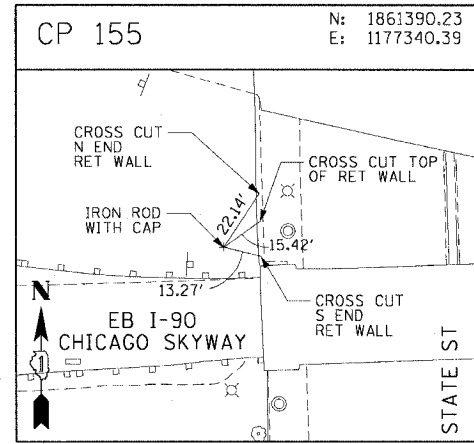
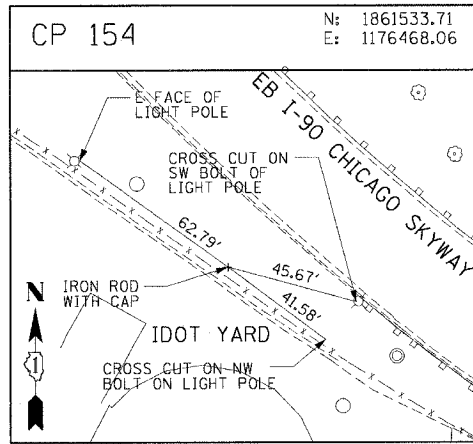


F.A.I. RTE.	SECTION	COUNTY	TOTAL SHEETS	SHEET NO.
90/94	2004-0571	COOK	47	20
STA.		TO STA.		
FED. ROAD DIST. NO. 1		ILLINOIS FED. AID PROJECT		
62796				



REVISIONS	
NAME	DATE

ILLINOIS DEPARTMENT OF TRANSPORTATION
F.A.I. 90/94 (DAN RYAN EXPRESSWAY)
59th ST TO 47th ST (WENTWORTH AVE SIDEWALKS)

SURVEY TIES AND CONTROL POINTS

SCALE: 1"=30'
DATE: MARCH 4, 2005

DRAWN BY: LC
CHECKED BY: JAL

04/24/2005 04:56:51 PM