

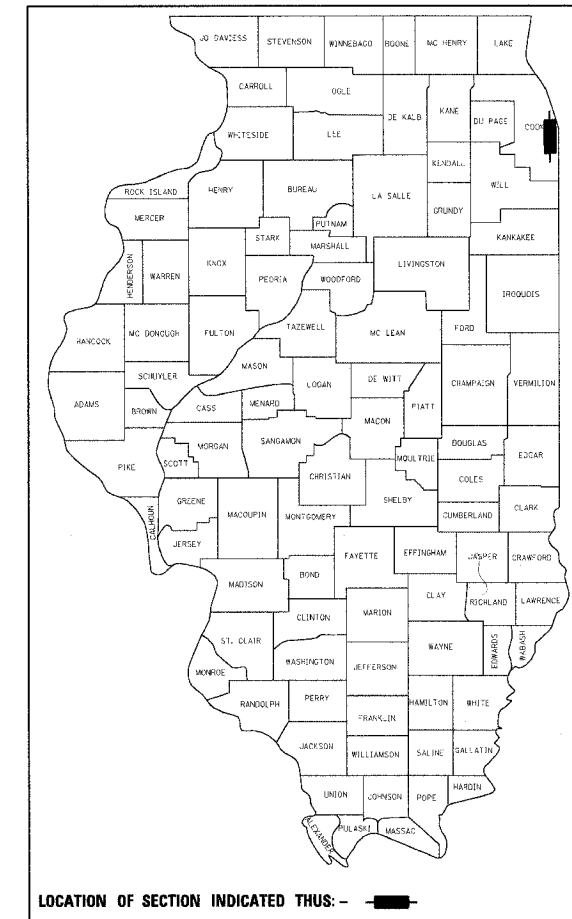
F.A.I. RTE.	SECTION	COUNTY	TOTAL SHEETS	SHEET NO.
90/94	2004-060PM	COOK	30	1

D-91-419-01

STATE OF ILLINOIS
DEPARTMENT OF TRANSPORTATION
DIVISION OF HIGHWAYS

**PLANS FOR PROPOSED
FEDERAL AID HIGHWAY**

F.A.I. ROUTE 90/94 (DAN RYAN EXPRESSWAY)
SECTION 2004-060PM
PROJECT: IM-094-3(391)057
INSTALLATION OF PAVEMENT MARKINGS ON
WENTWORTH AVENUE AND WELLS STREET FROM
59TH STREET TO 47TH STREET
COOK COUNTY
C-91-284-04



INDEX OF SHEETS

FOR INDEX OF SHEETS, SEE SHEET NO. 2

IDOT HIGHWAY STANDARDS

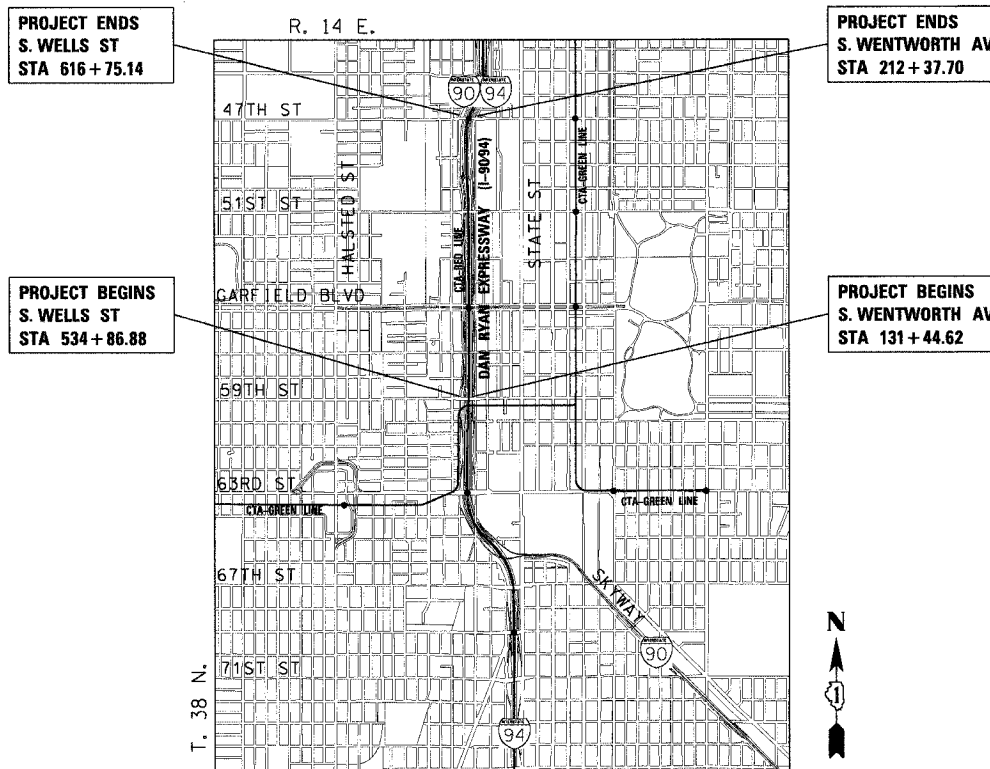
FOR IDOT HIGHWAY STANDARDS,
SEE SHEET NO. 2

PROJECT LOCATED IN CITY OF CHICAGO

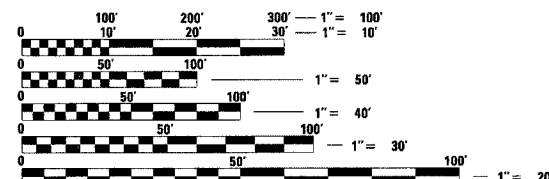
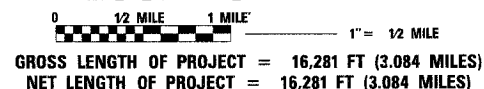
DESIGN DESIGNATION

WENTWORTH AVE: 6259 (20) URBAN COLLECTOR
WELLS ST: 8275 (20) URBAN COLLECTOR

	ADT	DESIGN	POSTED
	(2020)	SPEED	SPEED
FRONTAGE ROADS:			
WENTWORTH AVE	11,000	30	25
WELLS ST	15,000	30	25



LOCATION MAP



FULL SIZE PLANS HAVE BEEN PREPARED USING STANDARD ENGINEERING SCALES. REDUCED SIZED PLANS WILL NOT CONFORM TO STANDARD SCALES. IN MAKING MEASUREMENTS ON REDUCED PLANS, THE ABOVE SCALES MAY BE USED.

DIGGER:
CHICAGO UTILITY ALERT NETWORK
(312) 744-7000

CONTRACT NO. 62799

DISTRICT ONE DESIGN/CONSULTANT SERVICES PROJECT MANAGER
RAJENDRA, SHAH (847) 705-4437



John A. Lukowski
JOHN A. LUKOWSKI
11/30/05 EXPIRES
3/4/06

STATE OF ILLINOIS
DEPARTMENT OF TRANSPORTATION
DIVISION OF HIGHWAYS

SUBMITTED March 10, 20 05

Devin O'Keefe HP
DEPUTY DIRECTOR OF HIGHWAYS, REGION ENGINEER

May 13, 20 05

Mike Hine [Signature]
ENGINEER OF DESIGN AND ENVIRONMENT

May 13, 2005

Victor Madere [Signature]
DIRECTOR OF HIGHWAYS, CHIEF ENGINEER

PRINTED BY THE AUTHORITY OF THE STATE OF ILLINOIS

CTE ENGINEERS
CONSOER TOWNSEND ENVIRODYNE ENGINEERS, INC.
303 EAST WACKER DRIVE, SUITE 600
CHICAGO ILLINOIS 60601-5212, PHONE: (312) 938-0300