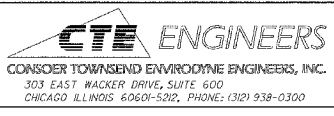
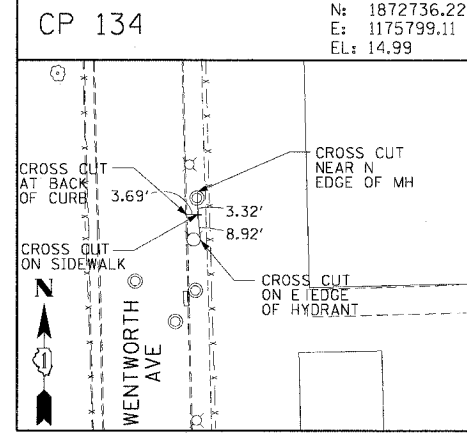
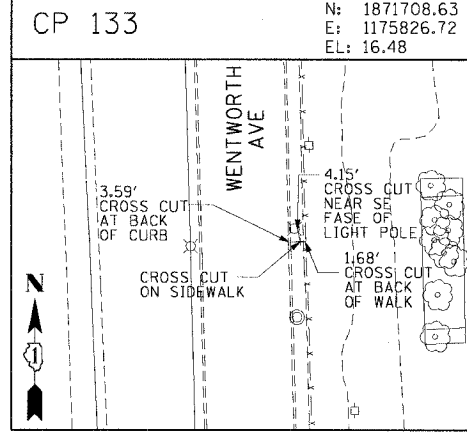
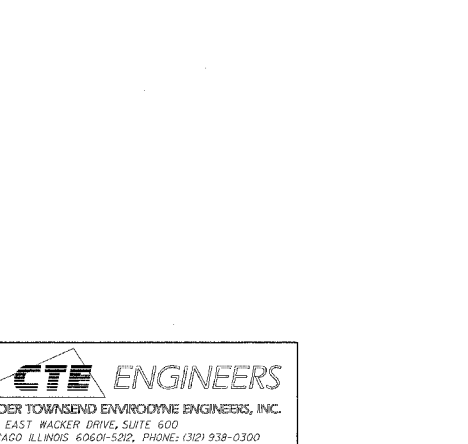
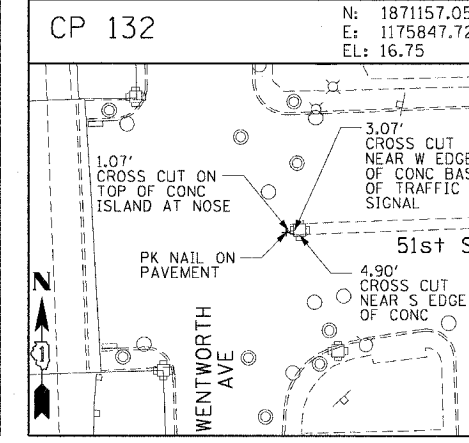
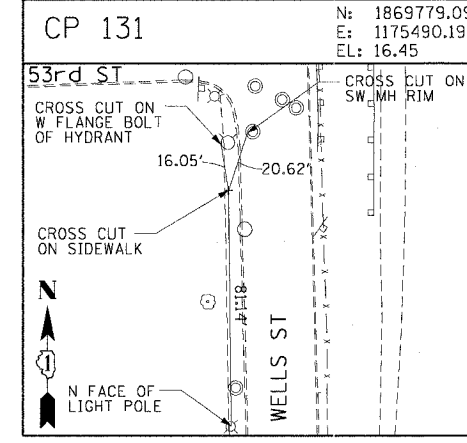
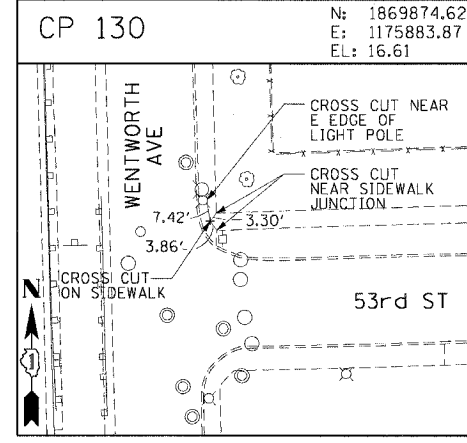
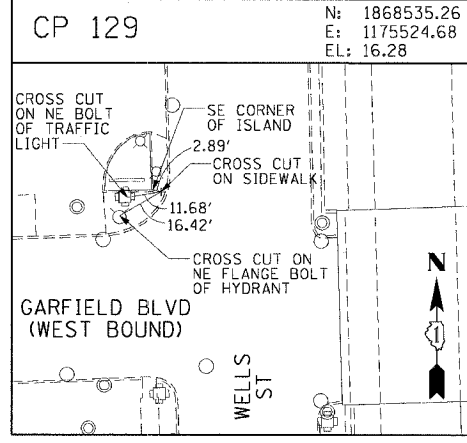
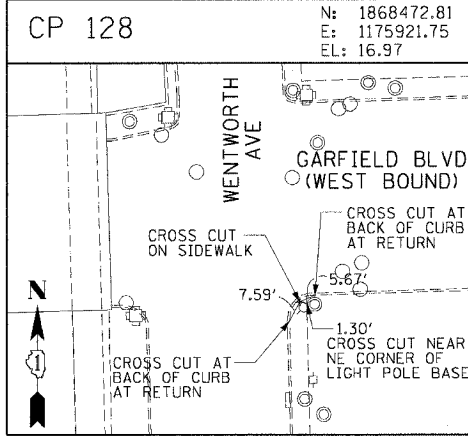
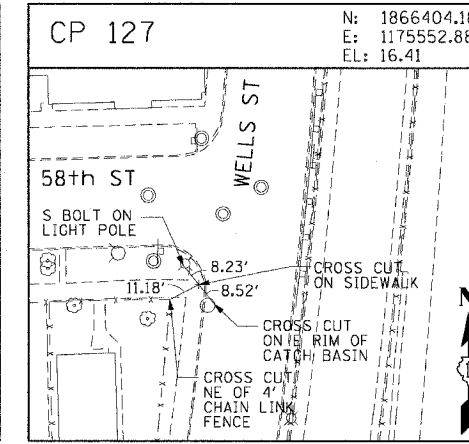
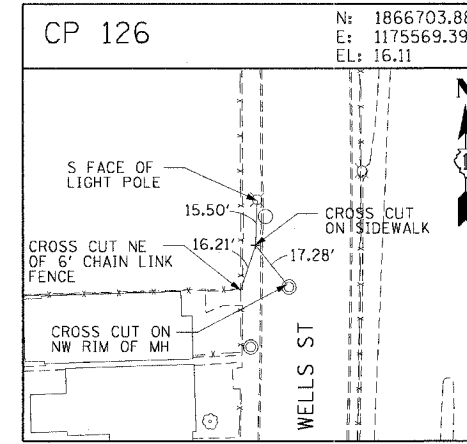
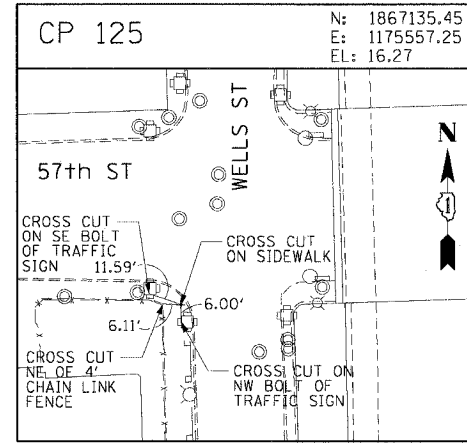
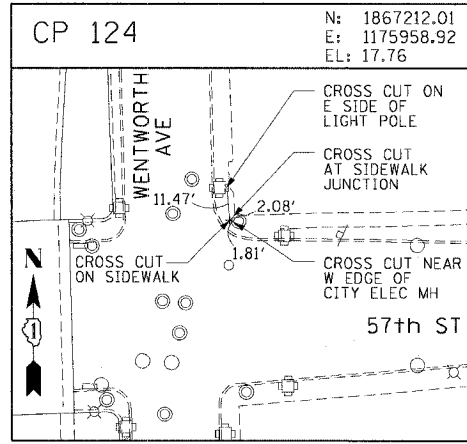
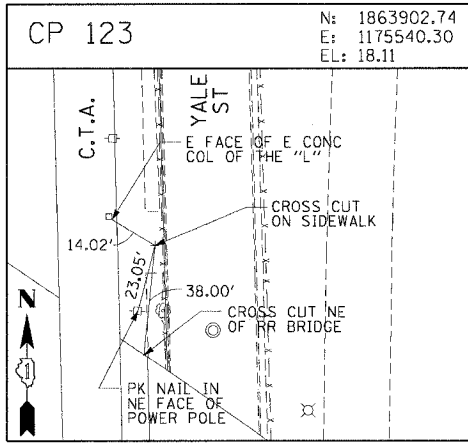
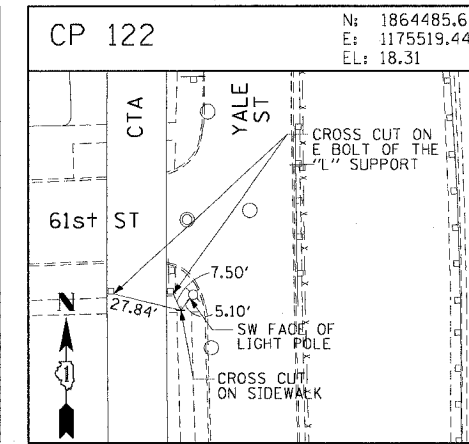
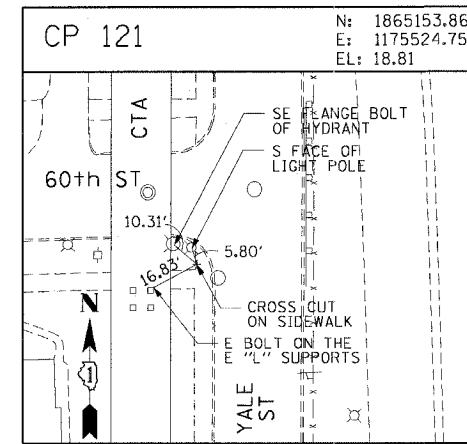
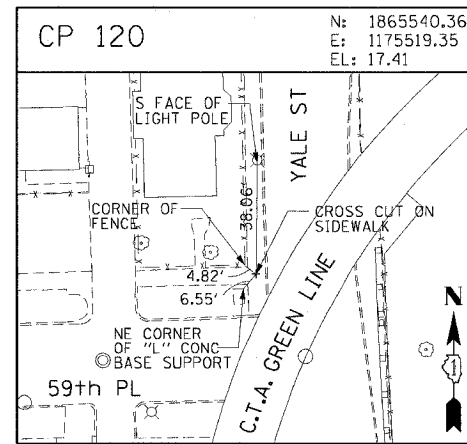
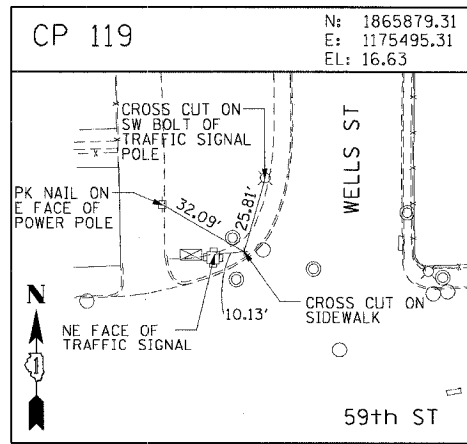
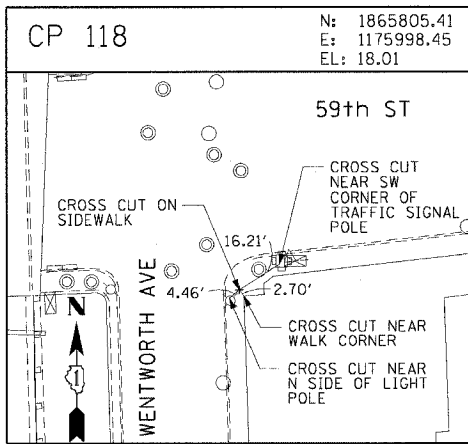


F.A.I. RTE.	SECTION	COUNTY	TOTAL SHEETS	SHEET NO.
90/94	2004-060PM	COOK	30	16
STA.	TO STA.			
FED. ROAD DIST. NO. 1	ILLINOIS FED. AID PROJECT		62799	



REVISIONS	
NAME	DATE

ILLINOIS DEPARTMENT OF TRANSPORTATION  
 F.A.I. 90/94 (DAN RYAN EXPRESSWAY)  
 59th ST TO 47th ST (FRONTAGE RD AND RAMPS)

**SURVEY TIES AND CONTROL POINTS**

SCALE: 1"=30'  
 DATE: March 4, 2005

DRAWN BY: WRK  
 CHECKED BY: JAL

I:\90468\90468\90468-01\90468-01.dwg  
 8/7/05 8:07:33 AM