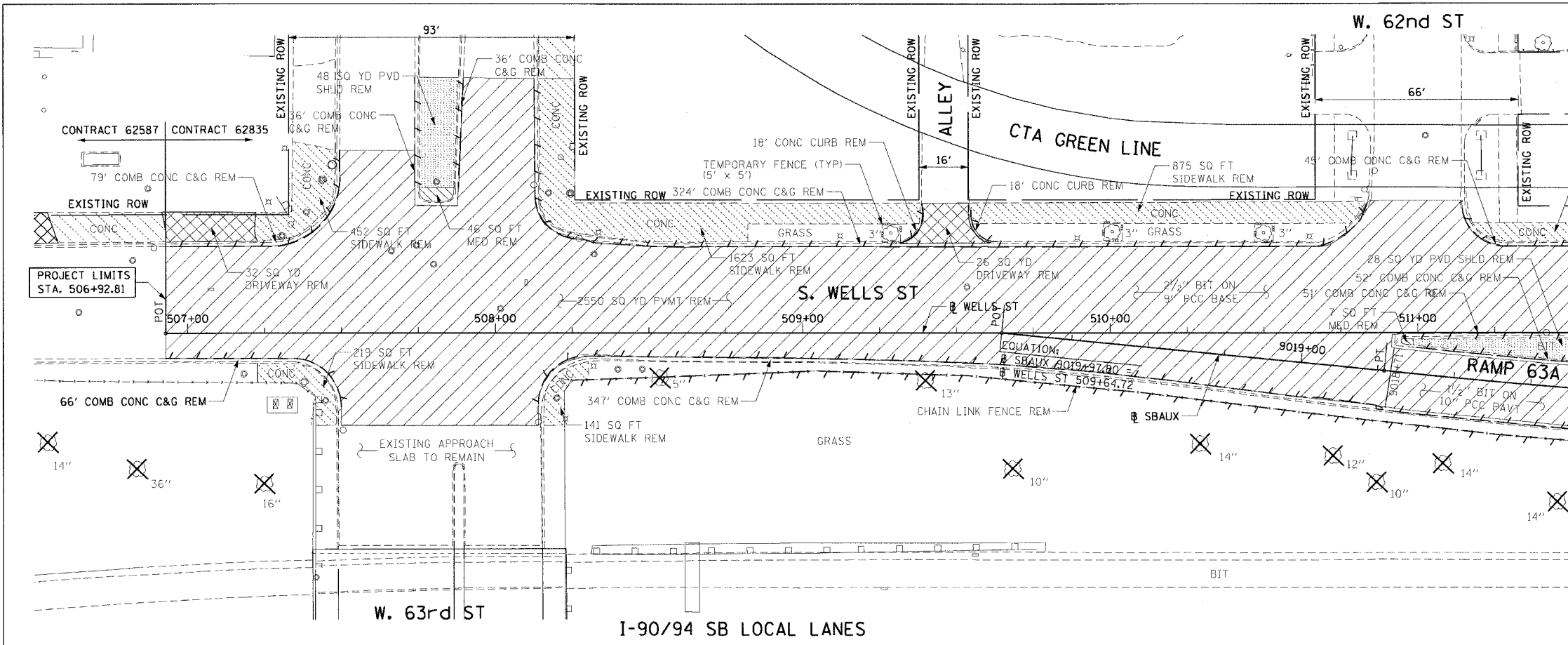


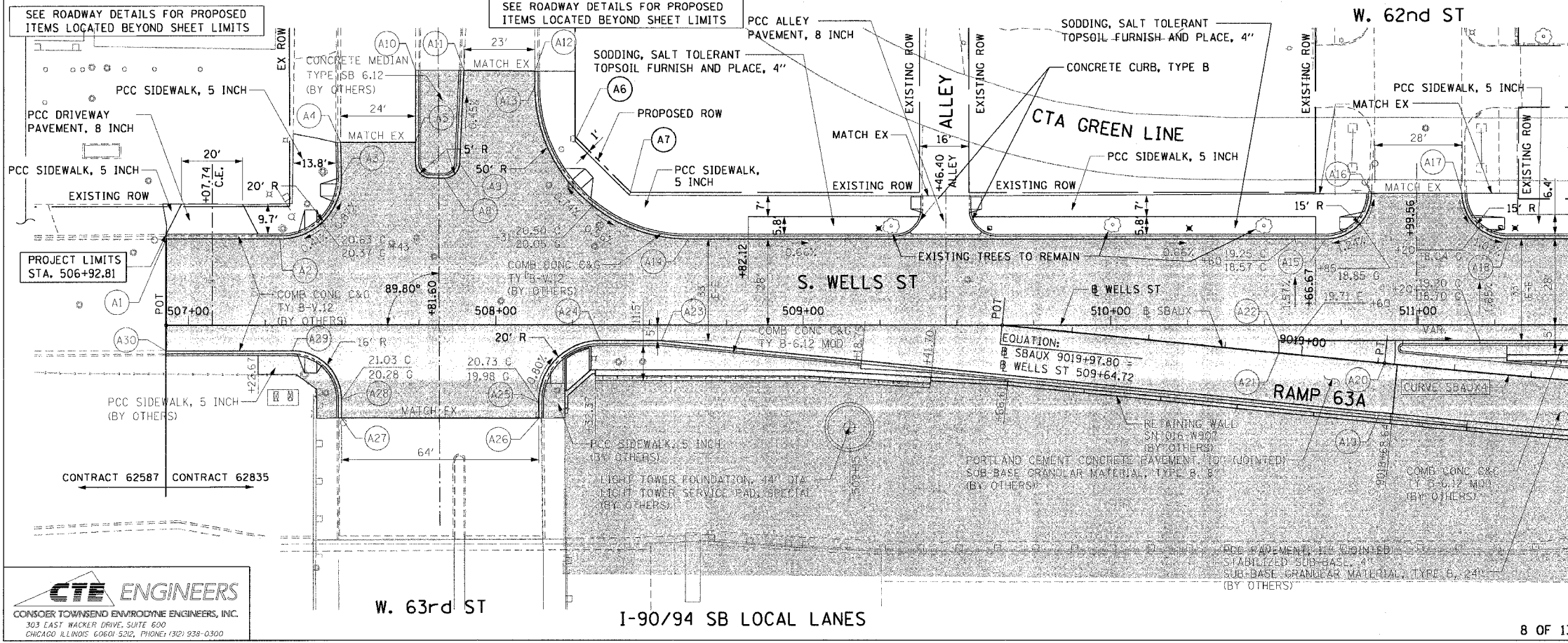
F.A.I. NO.	SECTION	COUNTY	TOTAL SHEETS	SHEET NO.
90/94	2004-094 I	COOK	40	26
STA. 506+92.81		TO STA. 511+50		
FED. ROAD DIST. NO. 1 ILLINOIS FED. AID PROJECT				

62835



- LEGEND:**
- PAVEMENT REMOVAL (BY OTHERS)
  - MEDIAN REMOVAL (BY OTHERS)
  - LINEAR REMOVALS (BY OTHERS)
  - SIDEWALK REMOVAL (BY OTHERS)
  - APPROACH SLAB REMOVAL (BY OTHERS)
  - DRIVEWAY PAVEMENT REMOVAL (BY OTHERS)
  - PAVED SHOULDER REMOVAL (BY OTHERS)
  - TREE REMOVAL (BY OTHERS)

**EXISTING CONDITIONS AND REMOVAL**



**PROPOSED IMPROVEMENTS**

- LEGEND:**
- NOTES:**
- 1. SEE SIDEWALK DETAIL ON SHEET 34.
  - 2. SEE SIDEWALK RAMP DETAIL ON SHEET 33.
  - 3. SEE DRIVEWAY DETAIL ON SHEET 35.
  - 4. SEE ALLEY DETAIL ON SHEET 36.
  - 5. SEE CURB DETAIL ON SHEET 32.
  - 6. THE CONTRACTOR SHALL COORDINATE LOCATIONS REGARDING THE SIGNING (62836) AND CONDUIT & LIGHT POLE FOUNDATION (62842) CONTRACTS.

PT.	STATION	OFFSET	LOC	PT.	STATION	OFFSET	LOC
A1	506+92.81	28.05' LT	EOP	A16	510+84.85	43.00' LT	EOP
A2	507+29.80	28.00' LT	EOP	A17	511+14.28	43.00' LT	EOP
A3	507+49.79	48.50' LT	EOP	A18	511+29.28	28.00' LT	EOP
A4	507+49.52	59.62' LT	EOP	A19	9018+72.82	16.00' LT	EOP
A5	507+73.86	59.60' LT	EOP	A20	9018+72.82	0.00'	EOP
A6	508+25.66	60.16' LT	SW	A21	9019+07.36	0.00'	EOP
A7	508+43.45	42.40' LT	SW	A22	510+54.71	5.00' RT	EOP
A8	507+83.19	47.97' LT	EOP	A23	508+53.93	5.00' RT	EOP
A9	507+88.22	52.74' LT	EOP	A24	508+33.91	5.00' RT	EOP
A10	507+73.92	83.21' LT	EOP	A25	508+13.92	25.20' RT	EOP
A11	507+89.63	83.21' LT	EOP	A26	508+13.96	30.18' RT	EOP
A12	508+12.65	82.98' LT	EOP	A27	507+49.84	30.09' RT	EOP
A13	508+12.65	77.98' LT	EOP	A28	507+49.82	24.18' RT	EOP
A14	508+62.65	28.00' LT	EOP	A29	507+33.82	8.22' RT	EOP
A15	510+69.85	28.00' LT	EOP	A30	506+92.81	8.22' RT	EOP

REVISIONS	
NAME	DATE

ILLINOIS DEPARTMENT OF TRANSPORTATION  
F.A.I. 90/94 (DAN RYAN EXPRESSWAY)  
63rd ST TO 59th ST (SIDEWALKS & DRIVEWAYS)

**EXISTING AND PROPOSED ROADWAY PLANS  
WELLS STREET**

SCALE: 1"=20'  
DATE: MARCH 04, 2005

DRAWN BY: JB  
CHECKED BY: RMG

**CTE ENGINEERS**  
CONSECO TOWNSEND ENVIRONMENTAL ENGINEERS, INC.  
303 EAST WALKER DRIVE, SUITE 600  
CHICAGO, ILLINOIS 60601-5202, PHONE: (312) 938-0300

03/07/2005 10:46:02 AM