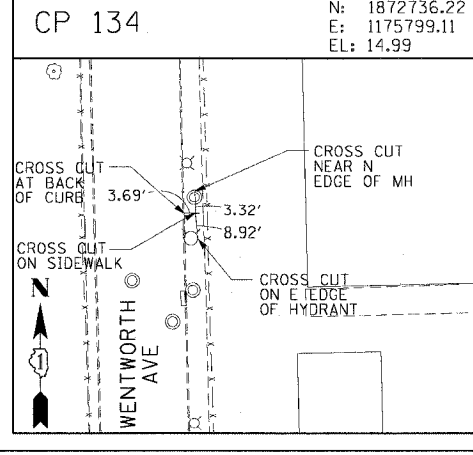
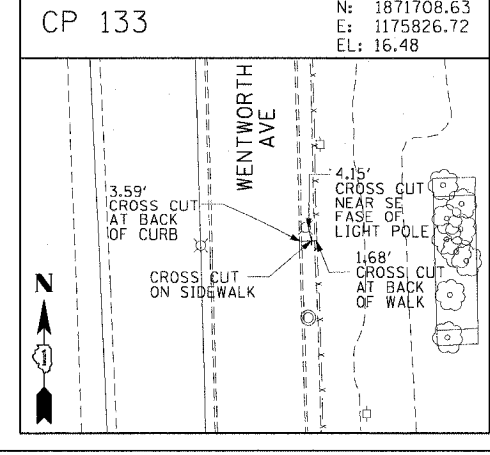
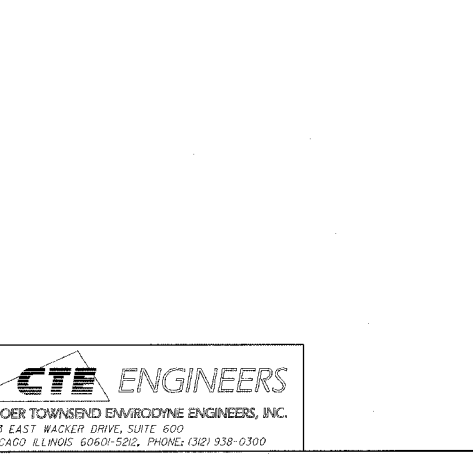
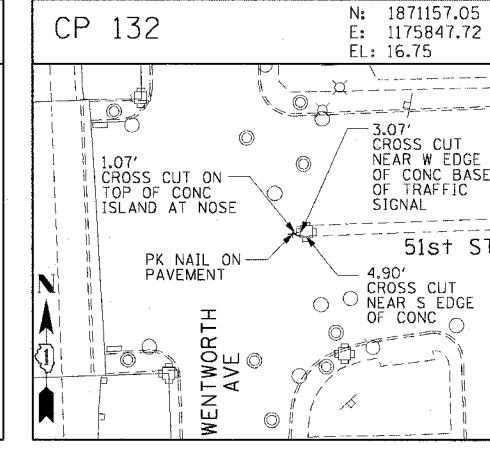
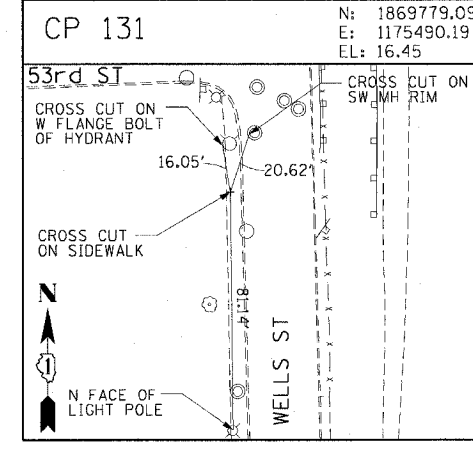
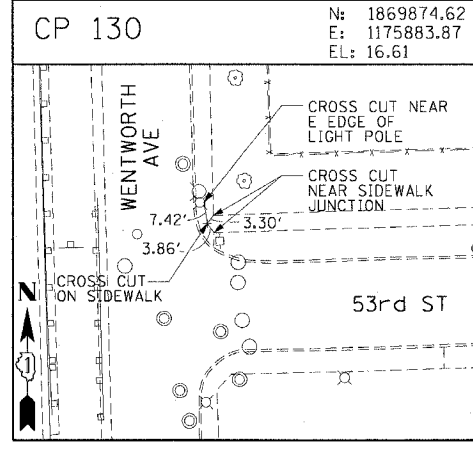
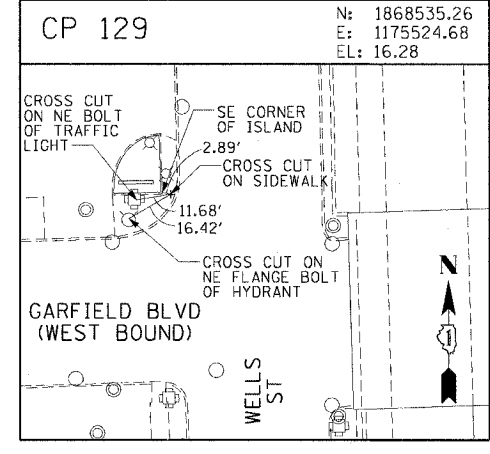
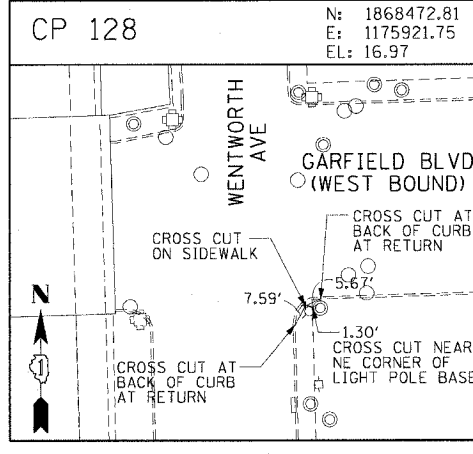
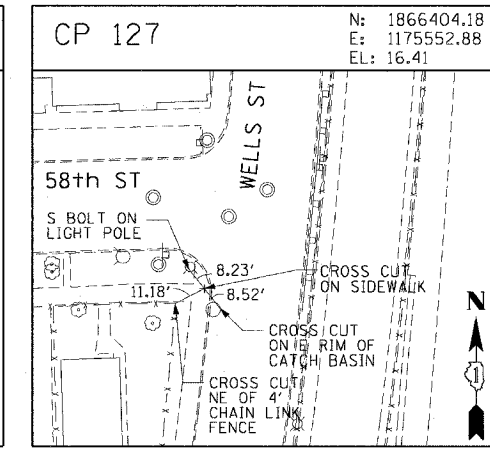
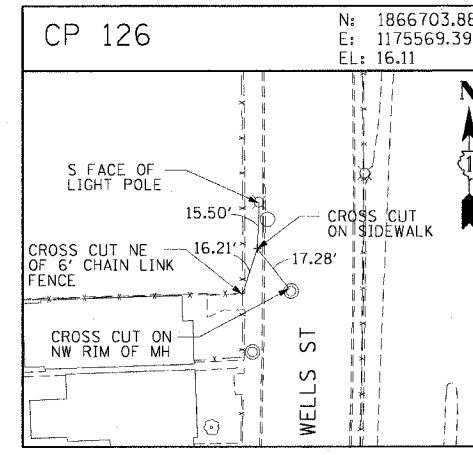
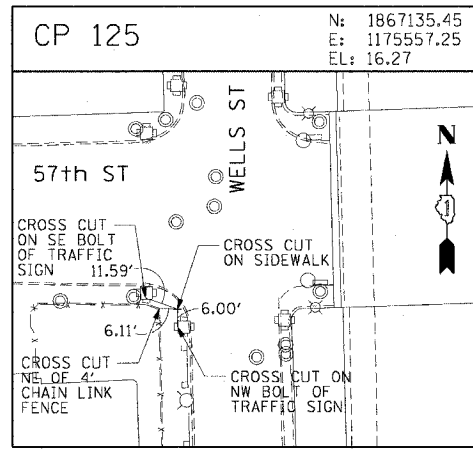
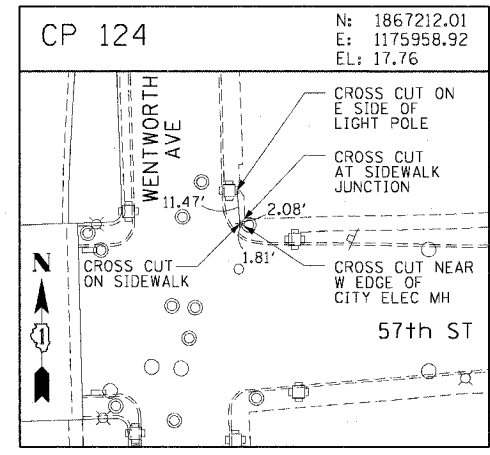
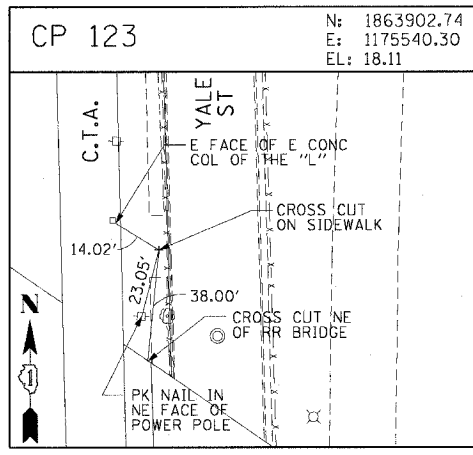
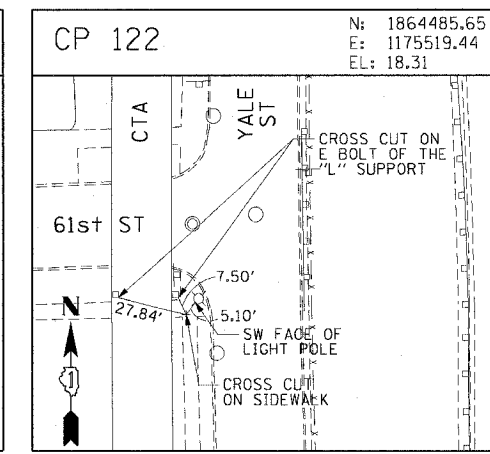
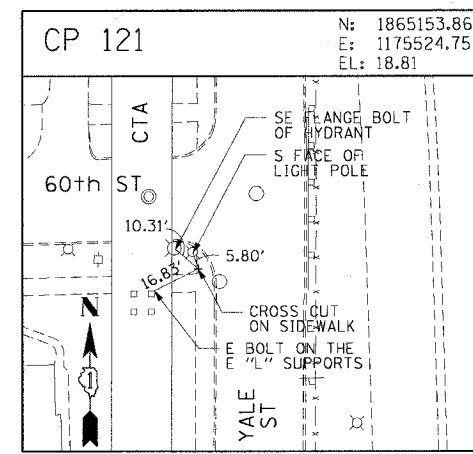
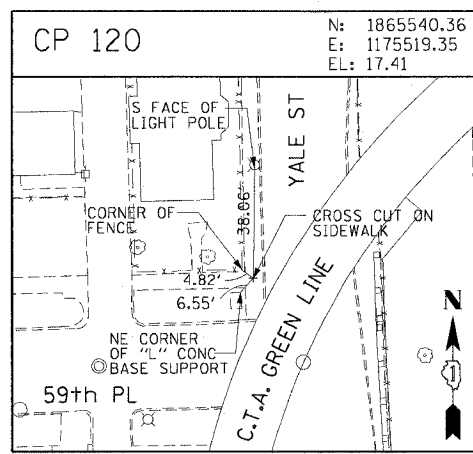
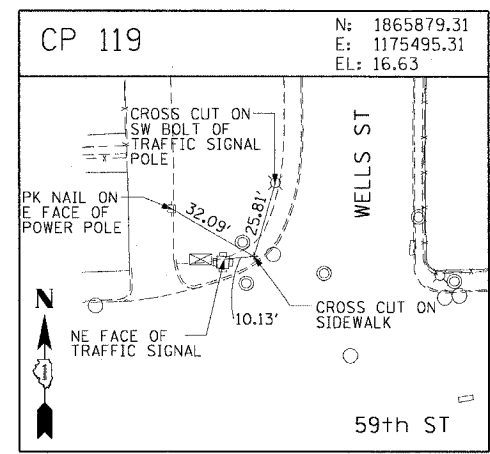
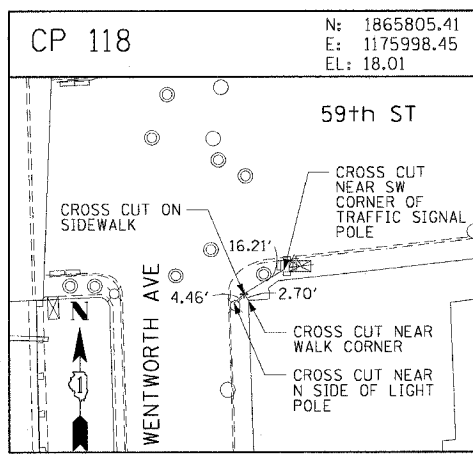


F.A.I. RTE.	SECTION	COUNTY	TOTAL SHEETS	SHEET NO.
90/94	2004-096 PM	COOK	23	14
STA.	TO STA.			
FED. ROAD DIST. NO. 1 ILLINOIS		FED. AID PROJECT		
62837				



REVISIONS	
NAME	DATE

ILLINOIS DEPARTMENT OF TRANSPORTATION  
 F.A.I. 90/94 (DAN RYAN EXPRESSWAY)  
 63rd ST TO 59th ST (PAVEMENT MARKINGS)

**SURVEY TIES AND CONTROL POINTS**

SCALE: 1"=30'  
 DATE: March 4, 2005  
 DRAWN BY: MRK  
 CHECKED BY: JAL



2/24/2005 3:20:09 PM