

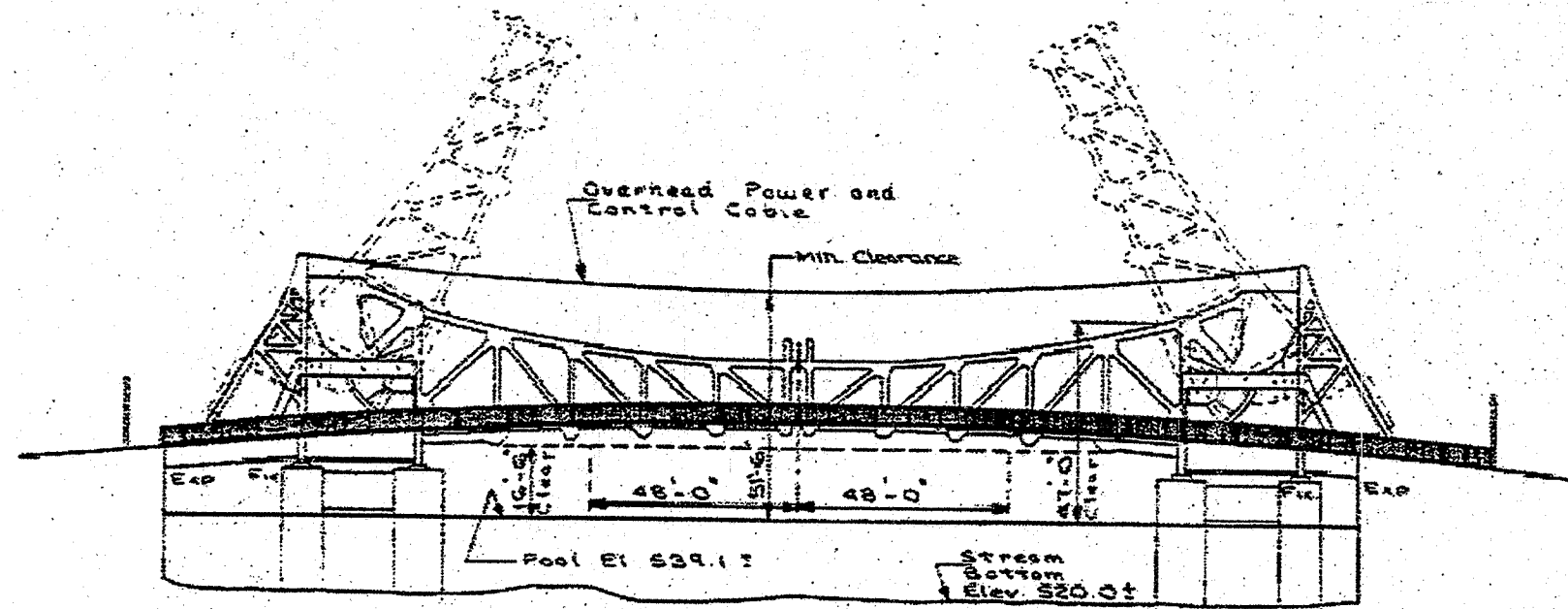
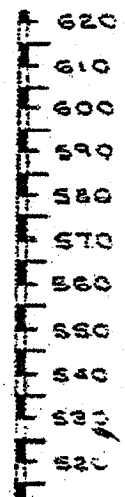
BENCH MARK:

BRASS DISC IN CONCRETE WALL AT STA. 9+42 LEFT 316'
ILL. WATERWAY B.M. #288.2. MSL '12 ELEVATION 544.578.

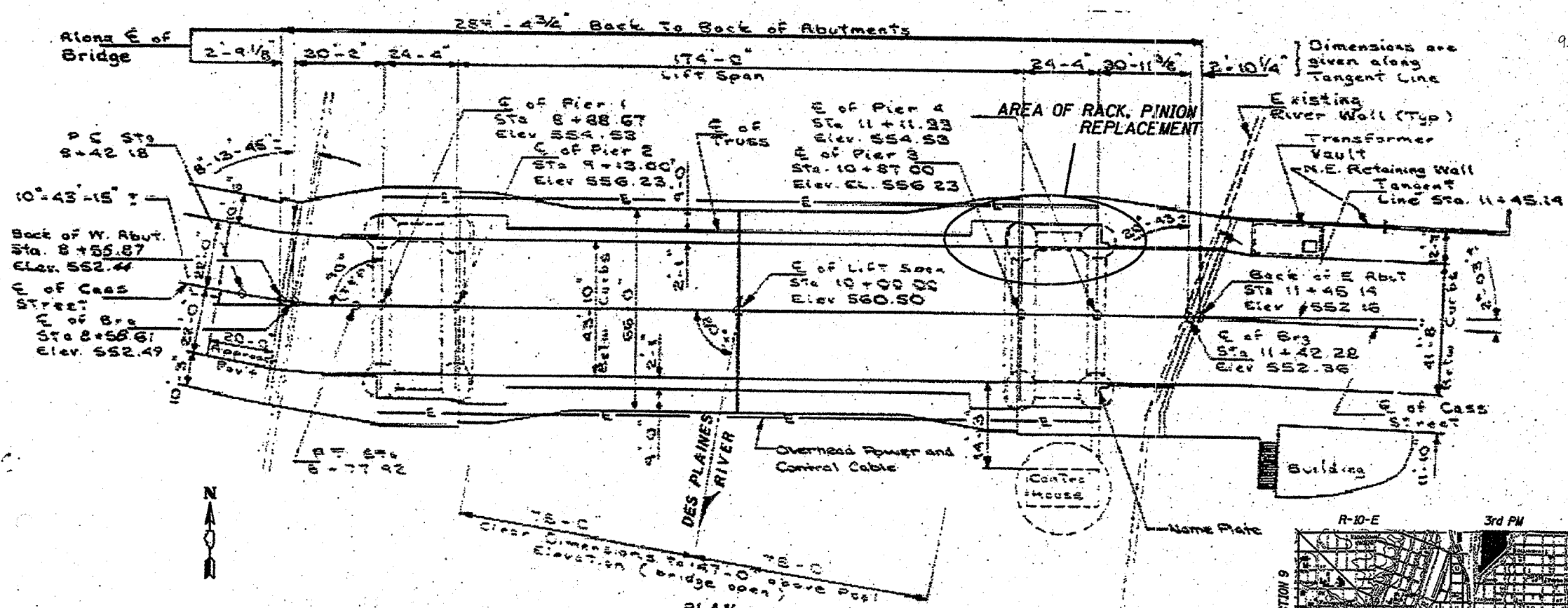
DESCRIPTION OF IMPROVEMENT:
REMOVAL AND REPLACEMENT OF THE COMPONENTS FOR
THE NORTHEAST RACK, PINION AND PINION SHAFT.

| | | | | |
|---------------------|-------|----------|------------------|--------------|
| ROUTE NO. | SECT. | COUNTY | SHEET NO. | TOTAL SHEETS |
| FAP 607 | * | WILL | 3 | 10 |
| FED. ROAD DIST. NO. | | ILLINOIS | FED. AID PROJECT | |

* G-R-I-4



ELEVATION



PLAN

GENERAL NOTES:

- DESIGN OF MACHINERY CONFORMS TO THE 1988 STANDARD SPECIFICATIONS FOR MOVABLE HIGHWAY BRIDGES PUBLISHED BY THE AMERICAN ASSOCIATION OF STATE HIGHWAY AND TRANSPORTATION OFFICIALS, 1992 AND 1993 REVISIONS, UNLESS OTHERWISE SHOWN ON THE PLANS OR PROVIDED FOR IN THE SPECIFICATIONS.
- ALL HIGH STRENGTH FASTENERS SHALL CONFORM TO ASTM A449, AND UNLESS OTHERWISE SPECIFIED, SHALL HAVE A HARDENED PLAIN WASHER UNDER THE HEAD AND THE NUT.
- MACHINERY DIMENSIONS SHOWN ON DRAWINGS ARE DIMENSIONS AFTER MACHINING.
- ALL BOLT HOLES IN CASTINGS SHALL BE SPOTFACED.
- MANUFACTURED COMPONENTS AND MACHINERY SURFACES IN CONTACT WITH MANUFACTURED COMPONENTS SHALL BE DIMENSIONED, TOLERANCED, FINISHED, AND INSTALLED PER THE INSTRUCTIONS OF THE MANUFACTURER.
- MACHINERY SHALL BE ERECTED BY MILLWRIGHTS WITH DEMONSTRATED COMPETENCE IN MACHINERY ERECTION WORK.
- PLAN DIMENSIONS AND DETAILS RELATIVE TO THE EXISTING STRUCTURE HAVE BEEN TAKEN FROM THE EXISTING PLANS AND ARE SUBJECT TO NOMINAL CONSTRUCTION VARIATIONS. IT SHALL BE THE CONTRACTOR'S RESPONSIBILITY TO VERIFY SUCH DIMENSIONS AND DETAILS IN THE FIELD AND MAKE NECESSARY APPROVED ADJUSTMENTS PRIOR TO CONSTRUCTION OR ORDERING OF MATERIALS. SUCH VARIATIONS SHALL NOT BE CAUSE FOR ADDITIONAL COMPENSATION FOR A CHANGE IN THE SCOPE OF THE WORK, HOWEVER, THE CONTRACTOR WILL BE PAID FOR THE QUANTITY ACTUALLY FURNISHED AT THE UNIT PRICE BID FOR THE WORK.
- THE EXISTING STRUCTURAL STEEL COATINGS CONTAIN LEAD. THE CONTRACTOR SHALL TAKE APPROPRIATE PRECAUTIONS TO PROTECT ALL PERSONNEL AND THE PUBLIC FROM THE LEAD ON THIS PROJECT.
- THE INORGANIC ZINC RICH PRIMER/ACRYLIC/ACRYLIC PAINT SYSTEM SHALL BE USED FOR SHOP AND FIELD PAINTING OF NEW STRUCTURAL STEEL, EXCEPT WHERE OTHERWISE NOTED. THE COLOR OF THE ACRYLIC FINISH COAT SHALL BE INTERSTATE GREEN, MUNSSELL NO. 7.5 G 4/8. SEE SPECIAL PROVISION "CLEANING AND PAINTING NEW METAL STRUCTURES."

INDEX OF DRAWINGS:

- C-01 GENERAL PLAN AND ELEVATION
- C-02 RACK AND PINION DETAILS
- C-03 SHAFT AND BEARING DETAILS
- C-04 MACHINERY PLAN
- C-05 SHIM DETAILS
- C-06 NEW PINION ASSEMBLY
- C-07 NEW PINION BEARING HOUSING

| ITEM | UNIT | TOTAL |
|-----------------|-------|-------|
| MECHANICAL WORK | L SUM | 1 |

*SEE SPECIAL PROVISIONS

| REVISION | DATE | DESCRIPTION |
|---|-------|---------------------|
| STATE OF ILLINOIS DEPARTMENT OF TRANSPORTATION | | |
| GENERAL PLAN & ELEVATION | | |
| CASS STREET BRIDGE OVER DESPLAINES RIVER U.S. 30 (WESTBOUND) CITY OF JOLIET, WILL COUNTY STRUCTURE NUMBER 099-0101 | | |
| DRAWING NO. C-01 | SCALE | DATE 2-05-2001 |
| | | SHEET NO. 1 OF 7 |

Designed by: ED
Checked by: JDR
Drafted by: SA
Checked by: ED

