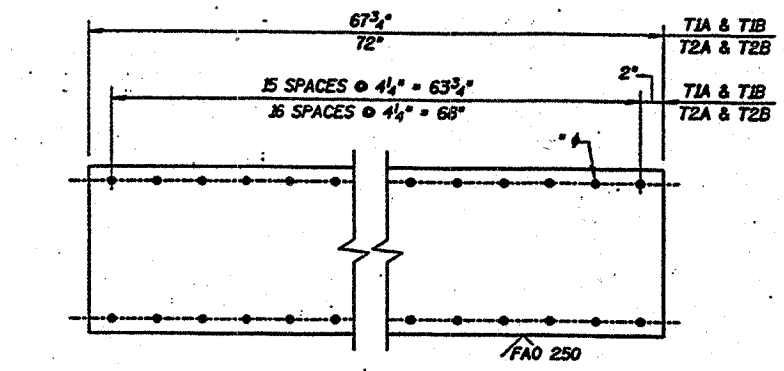


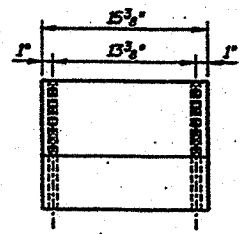
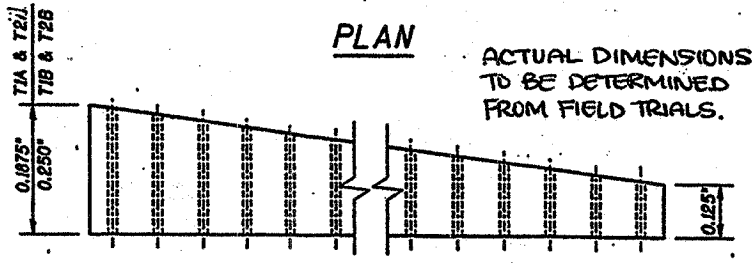
62859

ROUTE NO.	SECT.	COUNTY	SHEET NO.	TOTAL SHEETS
FAP 607	*	WILL	7	10
FED. ROAD DIST. NO.		ILLINOIS	FED. AID PROJECT	

*G-R-I-4



SHIMS TO BE MARKED AS TO DIMENSIONS AND IDENTITY PER FIELD REQUIREMENTS.



PLAN

ACTUAL DIMENSIONS TO BE DETERMINED FROM FIELD TRIALS.

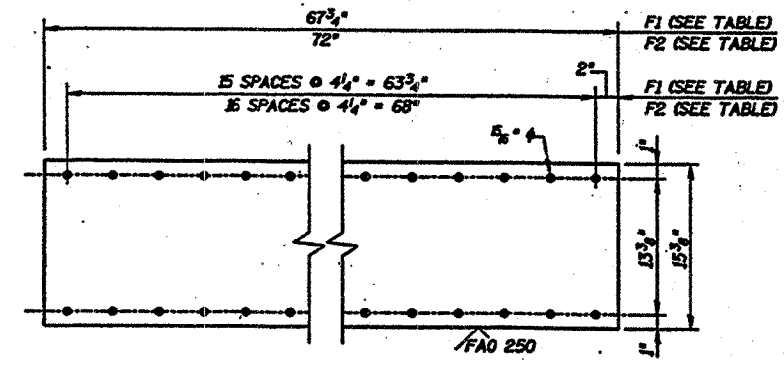
ELEVATION

END VIEW

TAPERED RACK SHIMS T1 & T2

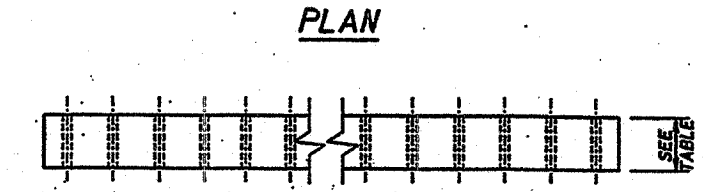
T1A, T1B, T2A, T2B - QUANTITIES AS REQUIRED FROM FIELD TRIALS.

ASTM A36 HOT ROLLED PLATE; SAW OR PLASMA CUT SQUARE EDGE; 15 FT-LBS @ 40°F MIN. AVG. CVN TOUGHNESS REQUIRED.



ACTUAL NUMBER TO BE DETERMINED BY FIELD REQUIREMENTS.

- F1A 0.0151 (28 GAGE)
- F1B 0.0293 (22 GAGE)
- F1C 0.0595 (16 GAGE)
- F1D 0.1200 (11 GAGE)
- F2A 0.0151 (28 GAGE)
- F2B 0.0293 (22 GAGE)
- F2C 0.0595 (16 GAGE)
- F2D 0.1200 (11 GAGE)



PLAN

ELEVATION

FLAT RACK SHIMS F1 & F2

ASTM A240, TYPE 304 STAINLESS STEEL SHEET

Designed by: ED
 Checked by: JK
 Drafted by: SA
 Checked by: ED

REVISION	DATE	DESCRIPTION
STATE OF ILLINOIS DEPARTMENT OF TRANSPORTATION		
SHIM DETAILS		
CASS STREET BRIDGE OVER DESPLAINES RIVER U.S. 30 (WESTBOUND) CITY OF JOLIET, WILL COUNTY STRUCTURE NUMBER 099-0101		
DRAWING NO. C-05	SCALE	DATE 2-05-2001
		SHEET NO. 5 OF 7