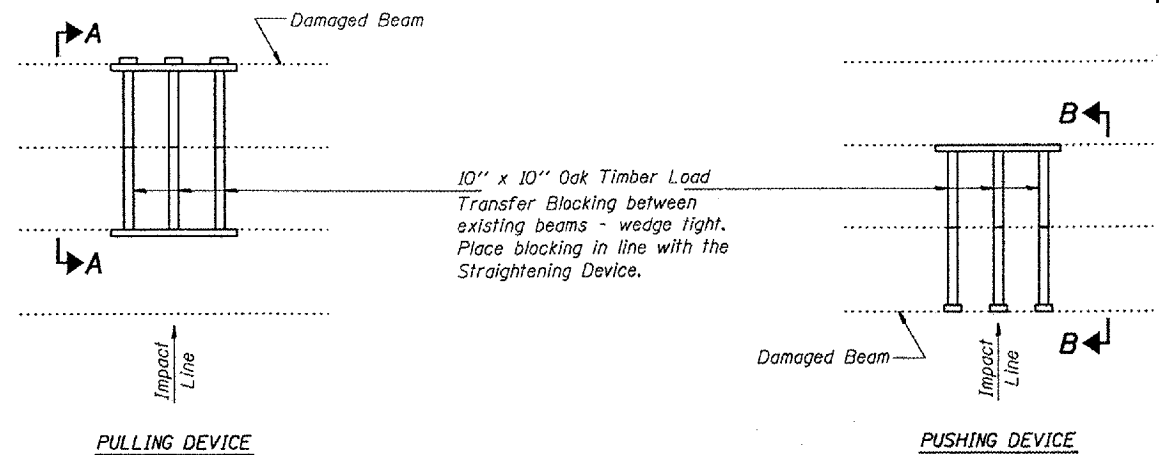


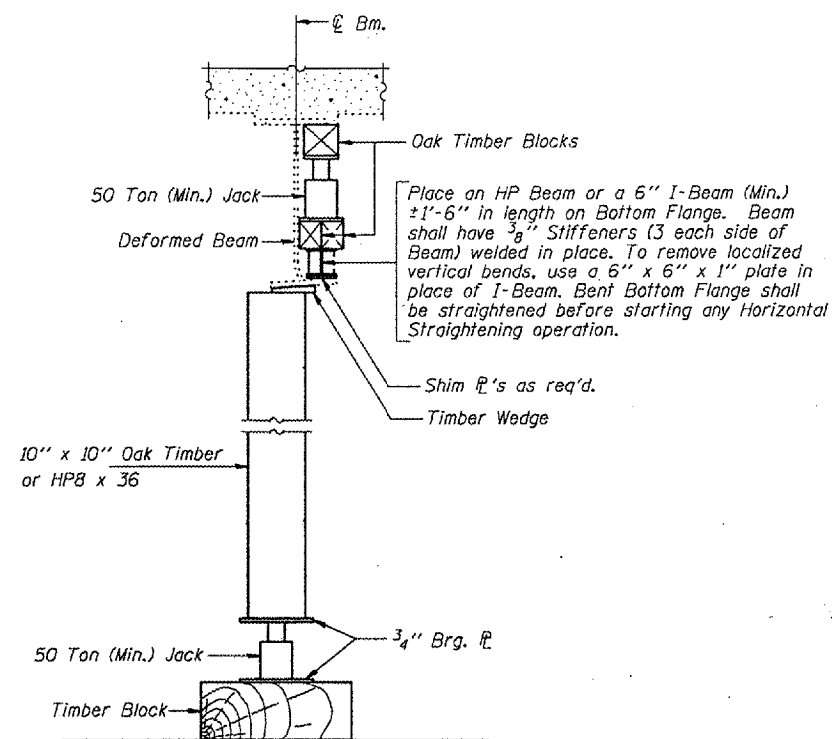
STATE OF ILLINOIS  
DEPARTMENT OF TRANSPORTATION

ROUTE NO.	SECTION	COUNTY	SHEETS	SHEET NO.
FAI 90		COOK	6 5	2 SHEETS
FED. ROAD DIST. NO. 7	ILLINOIS	FED. AID PROJECT	Contract No. 62765	

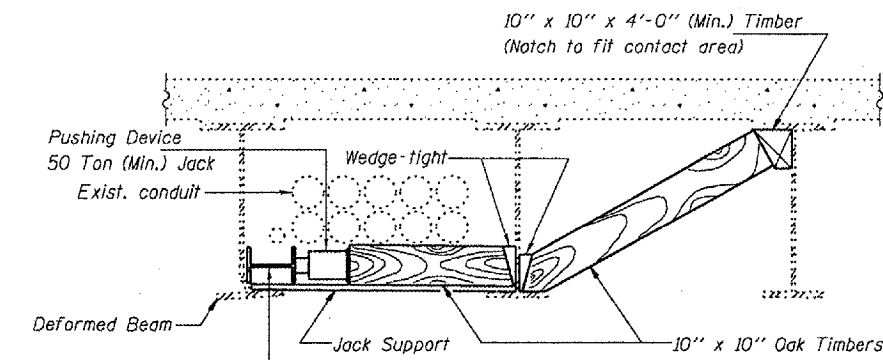


**PARTIAL PLANS**  
**SUGGESTED BEAM STRAIGHTENING METHODS**

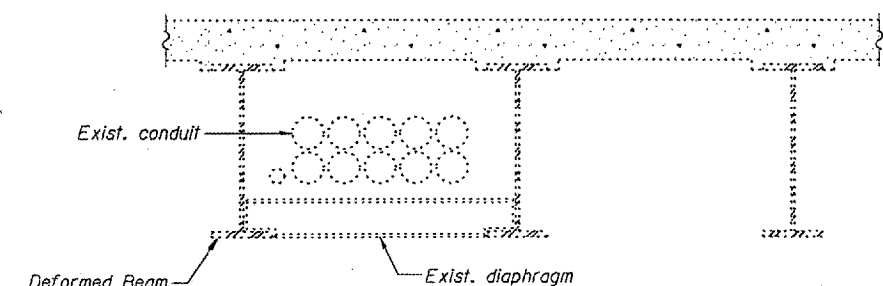
Straightening force shall be maintained on all load transfer blocking during beam straightening.



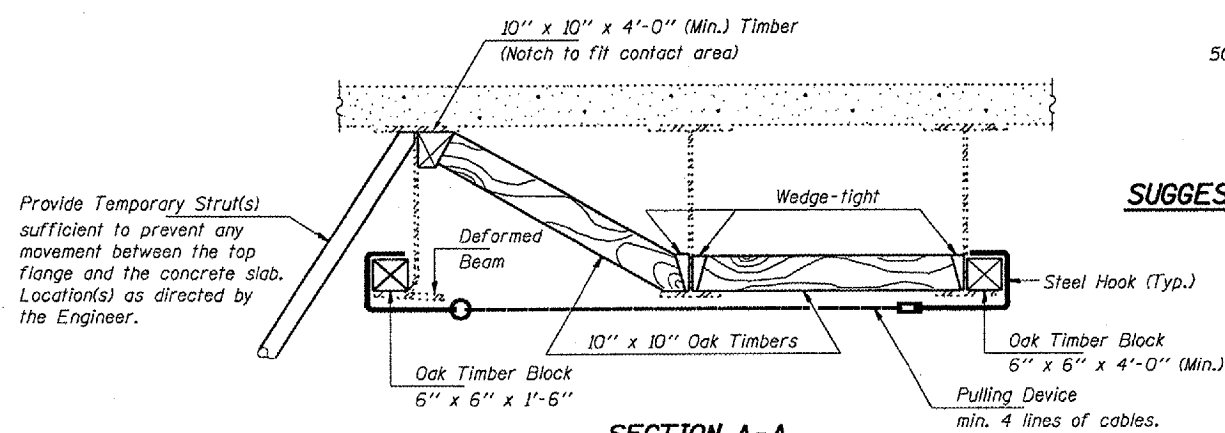
**SUGGESTED VERTICAL STRAIGHTENING DETAIL**



**SECTION B-B**  
(At location of straightening procedure)



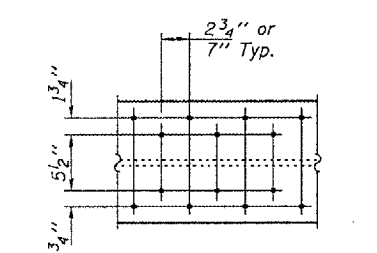
**SECTION B-B**  
(At diaphragm location)



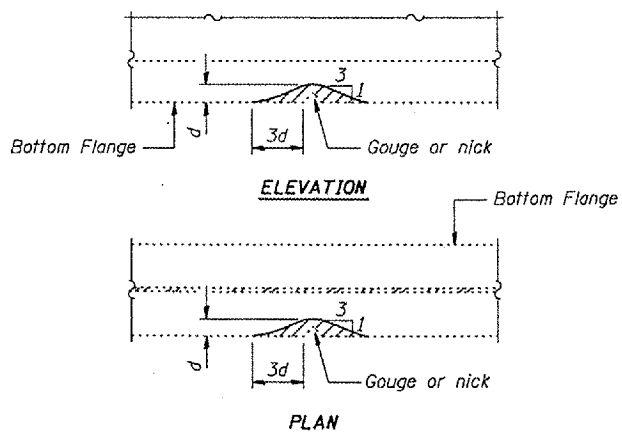
**SECTION A-A**

**EXISTING DEFORMATION TO BE STRAIGHTENED**

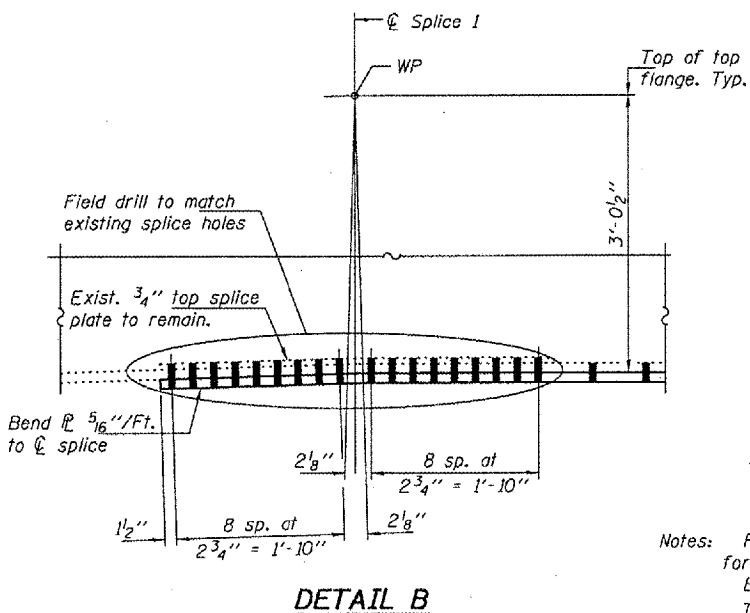
(Looking South)  
(Approximate max. deflections)  
Deflected length of beam to be straightened is approximately 24'-6\"/>



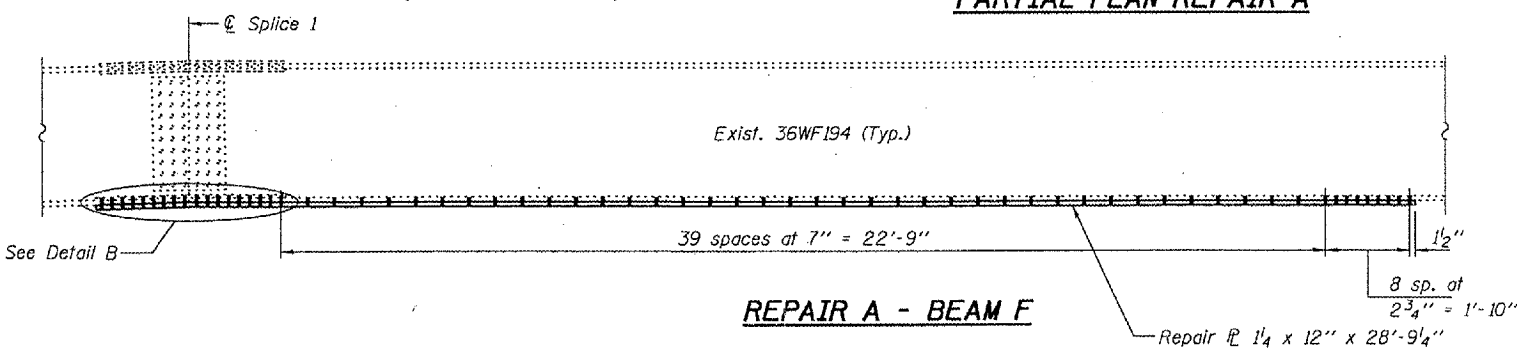
**PARTIAL PLAN REPAIR A**



**GRINDING DETAIL**



**DETAIL B**



**REPAIR A - BEAM F**

DESIGNED	JSB
CHECKED	PSJ
DRAWN	boliva
CHECKED	JSB PSJ

APRIL 8, 2005  
EXAMINED *John A. Morris*  
ENGINEER OF STRUCTURAL SERVICES  
PASSED *Ralph E. Anderson*  
ENGINEER OF BRIDGES AND STRUCTURES

Notes: Fasteners shall be high strength bolts. Holes for Repair A shall be 15/16"φ for 7/8"φ bolts.  
Existing bolts shall not be re-used.  
The cost of field drilling required for installation of the steel members is included with Structural Steel Repair.

**BEAM STRAIGHTENING**  
**CIRCLE AVE. OVER I-290, CSX & CTA**  
**COOK COUNTY**  
**S.N. 016-0995**