

GENERAL NOTES

Plan dimensions and details relative to existing structure have been taken from existing plans and are subject to nominal construction variations. It shall be the Contractor's responsibility to verify such dimensions and details in the field and make necessary approved adjustments prior to construction or ordering of materials. Such variations shall not be cause for additional compensation for a change in the scope of the work, however, the Contractor will be paid for the quantity actually furnished at the unit price bid for the work.

Any damage done to the bridge during beam removal shall be repaired by the Contractor. Cost to be included in the cost of "Removal of Existing P.P.C. Deck Beams".

Reinforcement bars shall conform to the requirements of AASHTO M 31 or M 322 Grade 60.

The top surface of the beams shall be finished in accordance with Article 504.06 of the Standard Specifications except that the surface shall not be roughened by brooming. The finished surface shall be free of depressions or high spots with sharp corners, and the top edge of keys shall be rounded or chamfered a minimum of 1/4".

Temporary concrete barrier shall only be anchored into the overlay and not the PPC Deck Beams.

All structural steel shall be shop painted with the inorganic zinc rich primer per AASHTO M300, Type 1. Cost included with Furnishing and Erecting Structural Steel.

Existing reinforcement extending into the removal area shall be cleaned, straightened and incorporated into the new construction.

Any reinforcement bars that are damaged during concrete removal shall be replaced with an approved bar splicer or anchorage system. Cost shall be included with Concrete Removal.

For stage construction details see Roadway Plans.

TOTAL BILL OF MATERIAL

ITEM	UNIT	QUANTITY
Bituminous Concrete Surface Removal	Sq. Yd.	100
Waterproofing Membrane System	Sq. Yd.	305
Removal of Existing PPC Deck Beams	Sq. Ft.	2221
Bituminous Concrete Surface Course, Superpave Mix "D", N 50	Tons	34.3
PC Mortar Fairing Course	Foot	1219
PPC Deck Beams (27" Depth)	Sq. Ft.	2169
Concrete Removal	Cu. Yd.	16.8
Concrete Superstructure	Cu. Yd.	18.7
Protective Coat	Sq. Yd.	72.6
Furnishing and Erecting Structural Steel	Pound	1260
Asbestos Bearing Pad Removal	Each	28
Reinforcement Bars, Epoxy Coated	Pound	2150

DESIGN STRESSES

PRESTRESS UNITS

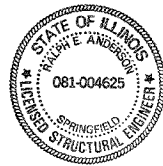
(New Construction)

f'c=5000 psi

f'ci=4000 psi

f's=270,000 (1/2"φ low relaxation strands)

f'si=201,960 (1/2"φ low relaxation strands)



Expires: November 30, 2006

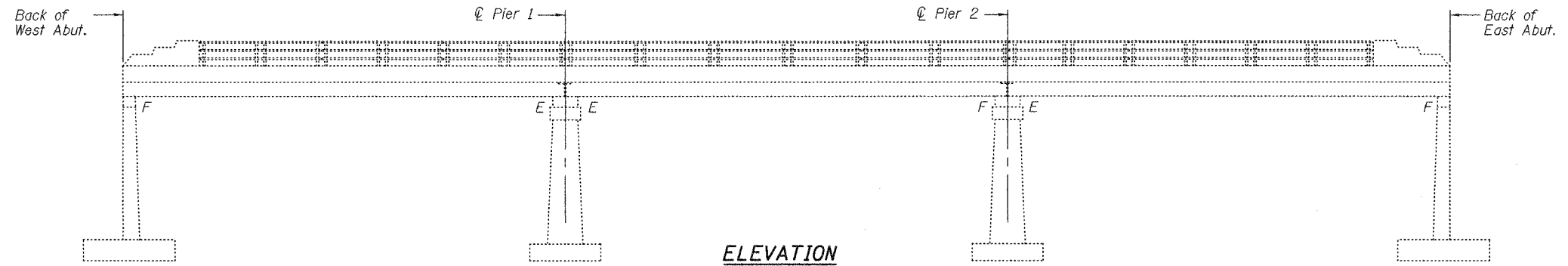
DESIGNED	Victor H. Velje
CHECKED	Adrian T. Hallberg
DRAWN	[Signature]
CHECKED	VHV ATH

EXAMINED	May 3, 2005 John A. Morris
PASSED	Robert C. Adams

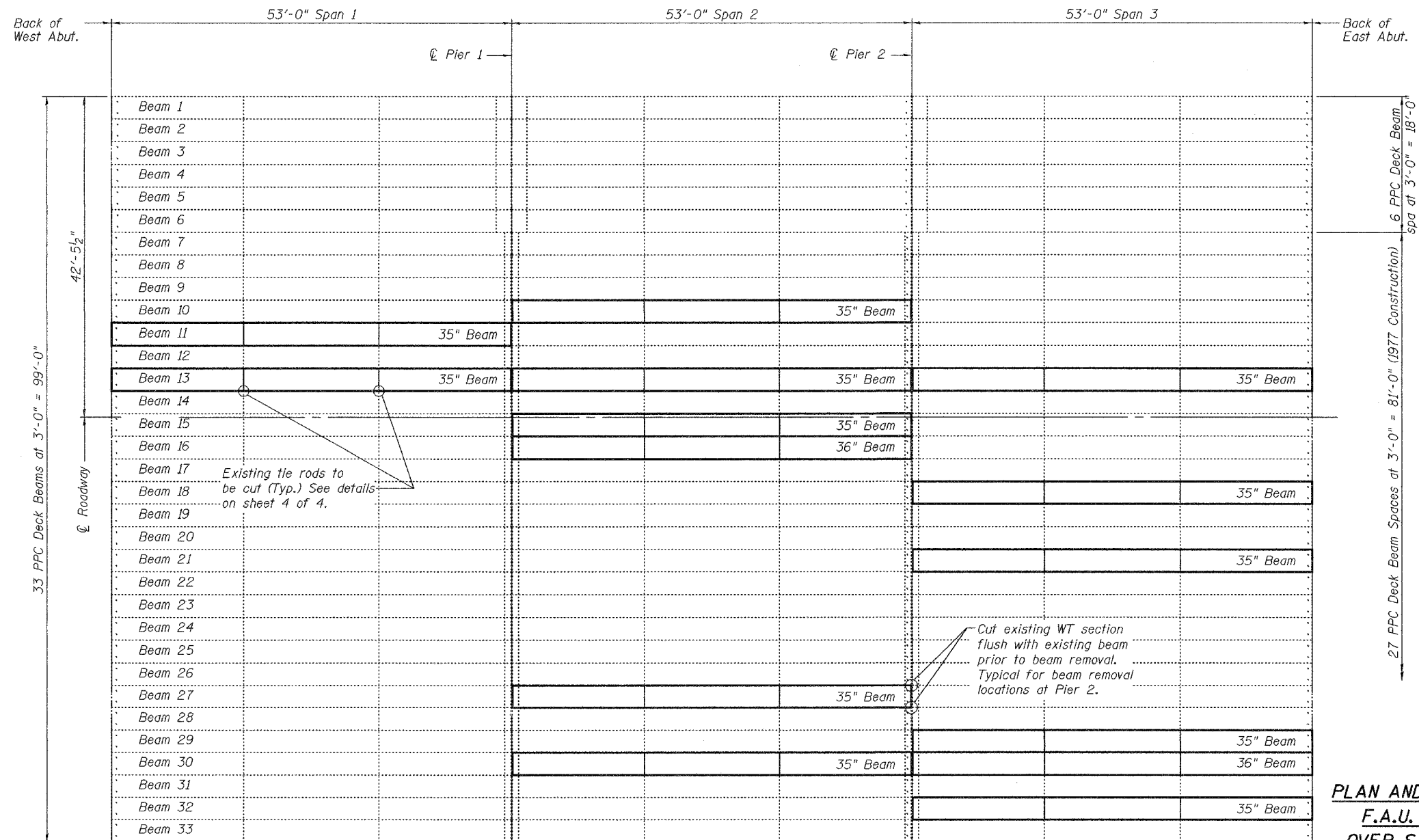
STATE OF ILLINOIS
DEPARTMENT OF TRANSPORTATION

ROUTE NO.	SECTION	COUNTY	STATE	SHEET NO.
		DuPage		//
Contract Number: 62912				

SHEET NO. 1
4 SHEETS



ELEVATION



PLAN

PLAN AND ELEVATION
F.A.U. RT. 9877
OVER SALT CREEK
DUPAGE COUNTY
SN 022-0084



6 PPC Deck Beam
Spa at 3'-0" = 18'-0"
(1962 Construction)

27 PPC Deck Beam Spaces at 3'-0" = 81'-0" (1977 Construction)

33 PPC Deck Beams at 3'-0" = 99'-0"

42'-5 1/2"

Back of West Abut.

Back of East Abut.

53'-0" Span 1

53'-0" Span 2

53'-0" Span 3

Pier 1

Pier 2

Beam 1

Beam 2

Beam 3

Beam 4

Beam 5

Beam 6

Beam 7

Beam 8

Beam 9

Beam 10

Beam 11

Beam 12

Beam 13

Beam 14

Beam 15

Beam 16

Beam 17

Beam 18

Beam 19

Beam 20

Beam 21

Beam 22

Beam 23

Beam 24

Beam 25

Beam 26

Beam 27

Beam 28

Beam 29

Beam 30

Beam 31

Beam 32

Beam 33

35" Beam

35" Beam

35" Beam

35" Beam

35" Beam

35" Beam

36" Beam

35" Beam

35" Beam

35" Beam

35" Beam

35" Beam

35" Beam

35" Beam

35" Beam

35" Beam

35" Beam

35" Beam

35" Beam