

INDEX OF SHEETS

FOR INDEX OF SHEETS, SEE SHEET NO. 2

PROJECT LOCATED IN THE CITY OF CHICAGO

| DAN RYAN EXPRESSWAY: | ADT (2020) | DESIGN SPEED | POSTED SPEED |
|----------------------------------|------------|--------------|--------------|
| SB I-94 (DAN RYAN) | 140,500 | 60 MPH | 55 MPH |
| SB I-57 | 69,390 | 60 MPH | 55 MPH |
| SB 71ST STREET C-D ENTRANCE RAMP | 9,145 | 45 MPH | 40 MPH |
| SB 75TH STREET C-D EXIT RAMP | 7,985 | 45 MPH | 40 MPH |
| SB 76TH STREET C-D ENTRANCE RAMP | 7,940 | 45 MPH | 40 MPH |
| SB 79TH STREET C-D EXIT RAMP | 7,205 | 45 MPH | 40 MPH |
| SB 87TH STREET EXIT RAMP | 12,590 | 45 MPH | 40 MPH |
| SB 87TH STREET ENTRANCE RAMP | 13,350 | 45 MPH | 40 MPH |
| SB 95TH STREET EXIT RAMP | 11,900 | 45 MPH | 40 MPH |
| SB WENTWORTH AVE. EXIT RAMP | 4,770 | 45 MPH | 40 MPH |
| SB HALSTED STREET EXIT RAMP | 21,310 | 45 MPH | 40 MPH |

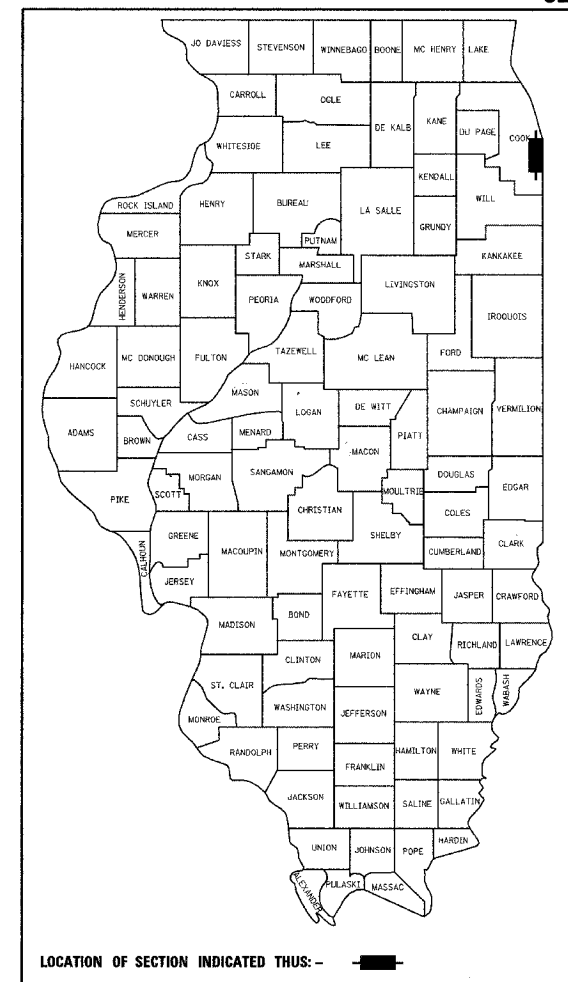
**STATE OF ILLINOIS
DEPARTMENT OF TRANSPORTATION
DIVISION OF HIGHWAYS**

PROPOSED HIGHWAY PLANS

**F.A.I. ROUTE 94 (DAN RYAN EXPRESSWAY)
SECTION (1516.1, 1717 & 1818) I-2
71ST STREET TO I-57 (SB RAMPS, C-D'S, AND RETAINING WALLS)
FENCING ON SB RETAINING WALLS
PROJECT: IM-094-3(395)060**

**COOK COUNTY
C-91-167-05
R. 14 E.**

| | | | | |
|---------------------|---------|---------------------------|--------------|-----------|
| F.A.I. RTE. | SECTION | COUNTY | TOTAL SHEETS | SHEET NO. |
| 94 | | COOK | 36 | 1 |
| FED. ROAD DIST. NO. | | ILLINOIS FED. AID PROJECT | | |
| D-91-421-01 | | (1516.1, 1717 & 1818) I-2 | 62931 | |



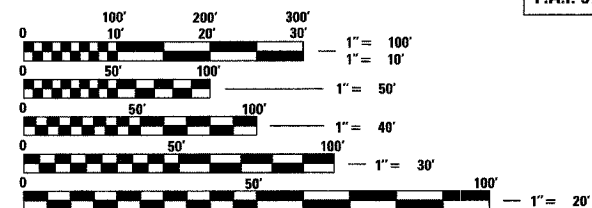
**STATE OF ILLINOIS
DEPARTMENT OF TRANSPORTATION
DIVISION OF HIGHWAYS**

SUBMITTED April 8, 2005
Dina O'Keefe/AP
DISTRICT ENGINEER

May 13, 2005
Mike Nunez/D
ENGINEER OF DESIGN AND ENVIRONMENT

May 13, 2005
Victor Moders/D
DIRECTOR, DIVISION OF HIGHWAYS

CONTRACT 17J



FULL SIZE PLANS HAVE BEEN PREPARED USING STANDARD ENGINEERING SCALES; REDUCED SIZED PLANS WILL NOT CONFORM TO STANDARD SCALES. IN MAKING MEASUREMENTS ON REDUCED PLANS, THE ABOVE SCALES MAY BE USED

DIGGER:
CHICAGO UTILITY ALERT NETWORK
(312) 744-7000

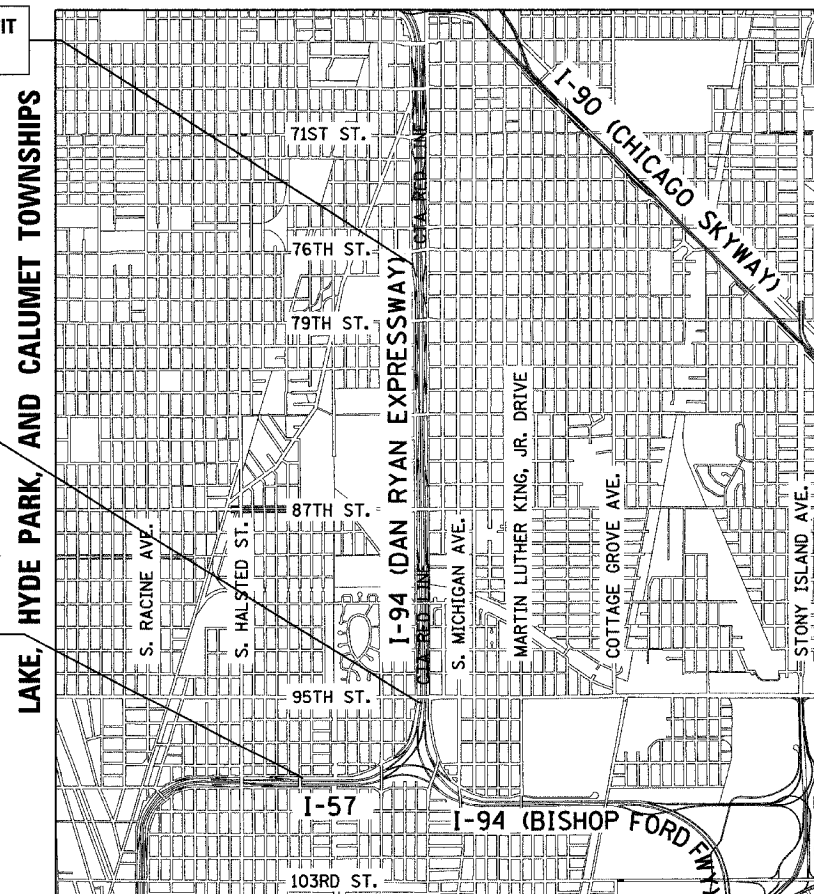
CTA CONTACT:
MARVIN A. WATSON,
GENERAL MANAGER, CONSTRUCTION
(312) 681-3860

CONTRACT NO. 62931

F.A.I. 94 (RYAN) PROJECT LIMIT
STA. 1329 + 61.69 (SB I-94)

F.A.I. 94 (RYAN) STA. 1204 + 63.94 =
F.A.I. 57 STA. 155 + 37.15

F.A.I. 57 PROJECT LIMIT
STA. 107 + 16.17 (SB I-57)



LOCATION MAP

MAP SCALE: 1" = 1/2 MILE
GROSS LENGTH OF PROJECT = 17,318.73 FT. = 3.280 MI.
NET LENGTH OF PROJECT = 17,318.73 FT. = 3.280 MI.



Signed Dean A. Kieseling
Dean A. Kieseling, P.E., Ill. Lic. No. 32957
Expires 11-30-2005.
Date APRIL 11, 2005

TYLIN INTERNATIONAL
PRINTED BY THE AUTHORITY OF THE STATE OF ILLINOIS