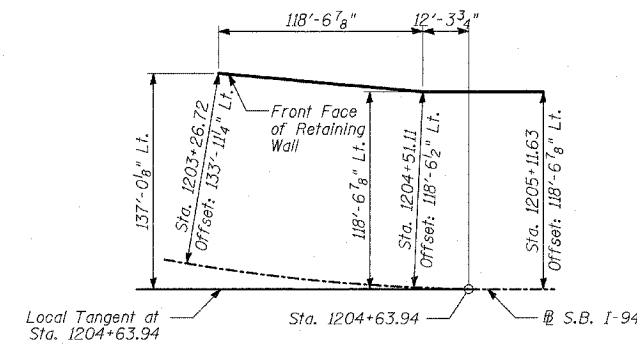
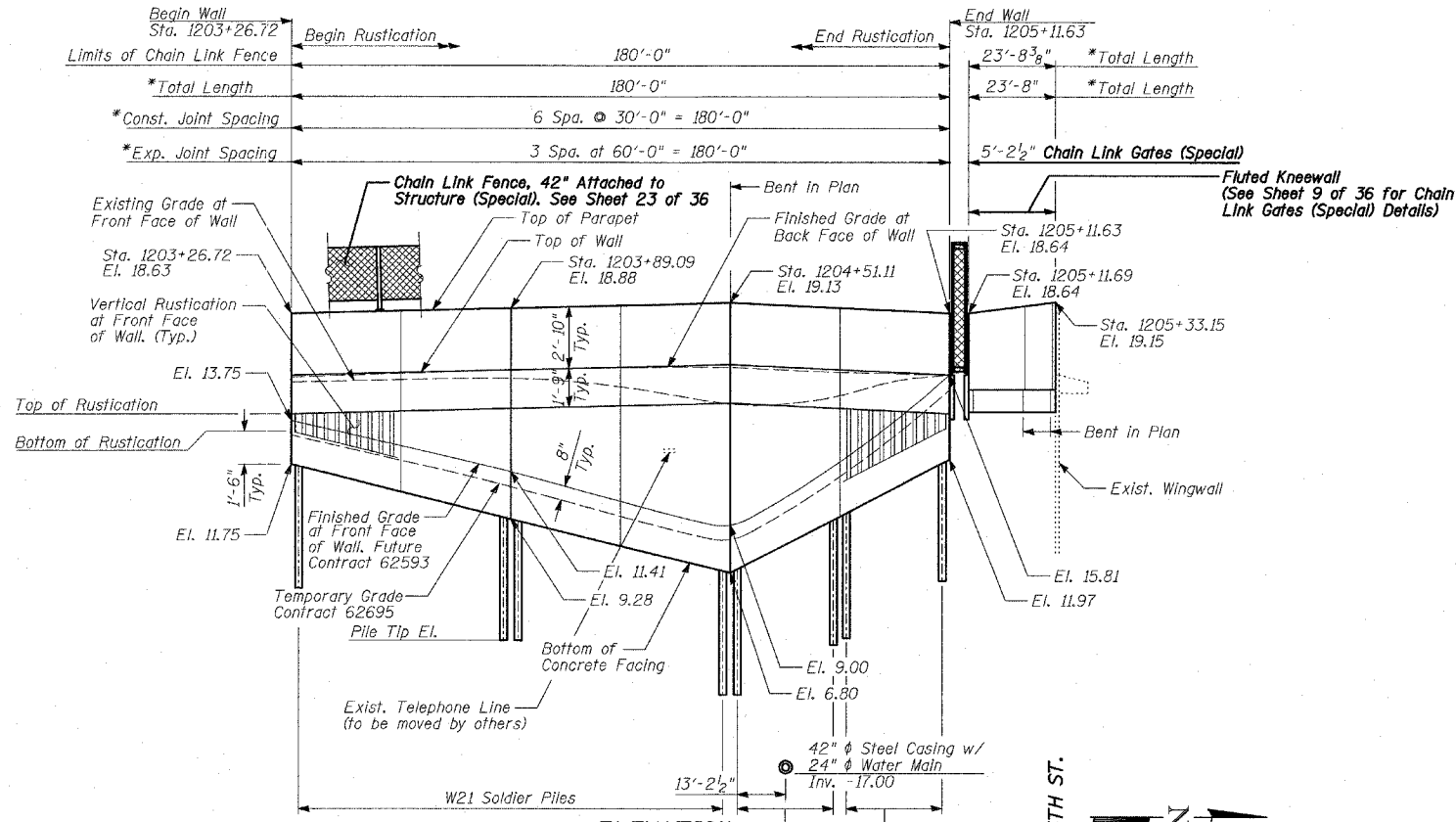


Benchmarks: BM 3551 Set "+" northerly flange bolt of hydrant at southwest intersection of 95th St. and Lafayette Ave. El. 17.50

Existing Structure: None.

F.A.I. RTE.	SECTION	COUNTY	TOTAL SHEETS	SHEET NO.
94	*	COOK	36	8
STA. 1200+00.00		TO STA. 1330+00.00		
FED. ROAD DIST. NO.		ILLINOIS FED. AID PROJECT		
* (1516.1, 1717 & 1818) I-2				62931



**CURVE DATA**

Δ = 9° 05' 16.13" (Lt.)  
 D = 1° 57' 31.79"  
 R = 2,925.00  
 L = 463.94  
 E = 9.22  
 T = 232.46  
 PC = Sta. 1200+00.00  
 PI = Sta. 1202+32.46  
 PT = Sta. 1204+63.94

**DESIGN SPECIFICATION**

AASHTO 2002 Standard Specifications for Highway Bridges

**DESIGN STRESSES**

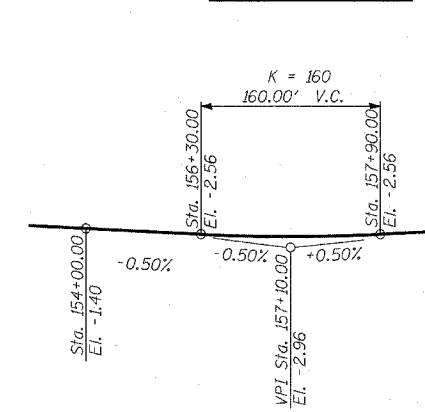
**FIELD UNITS**

f'c = 3,500 psi  
 fy = 60,000 psi (Reinforcement)  
 fy = 36,000 psi (M270 Grade 36) Solder Piles

**LOADING**

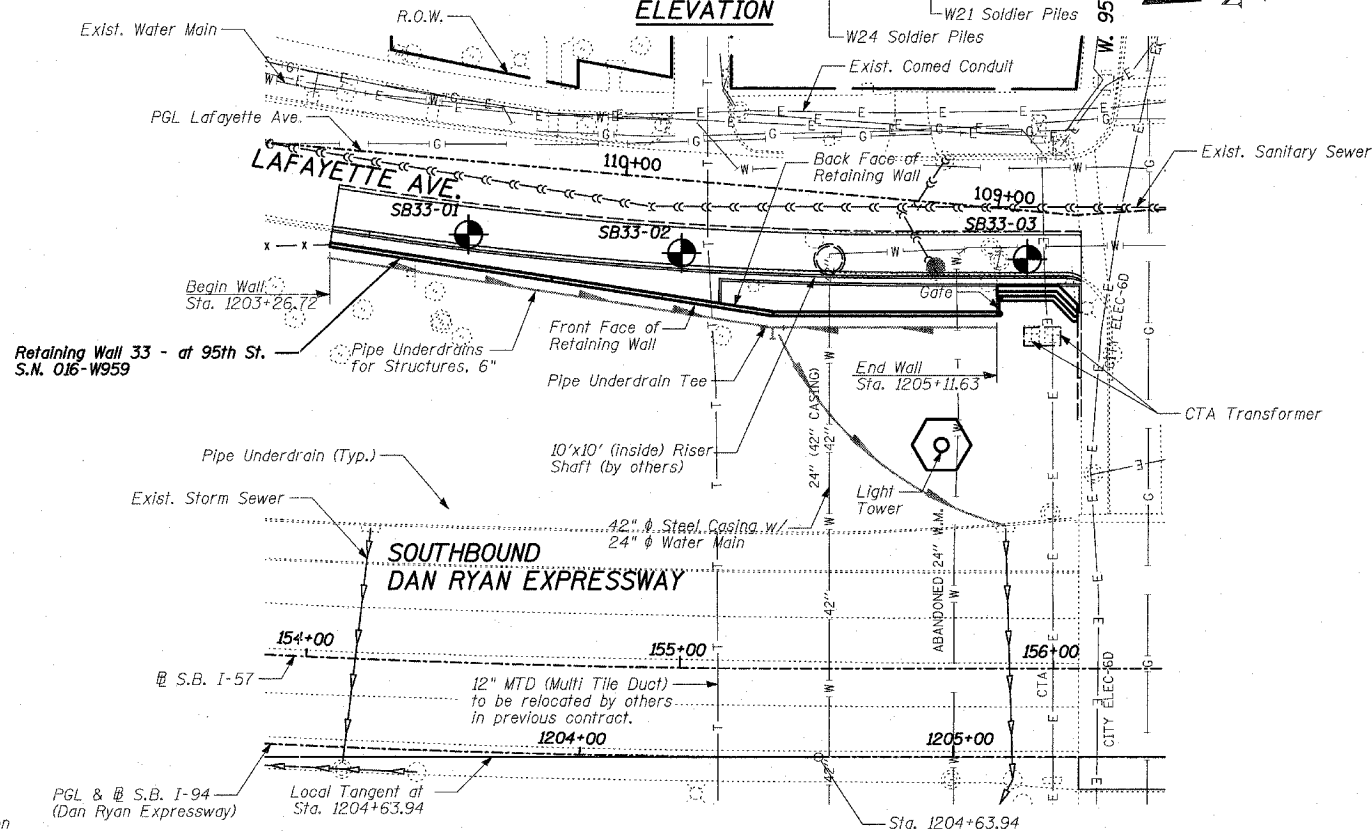
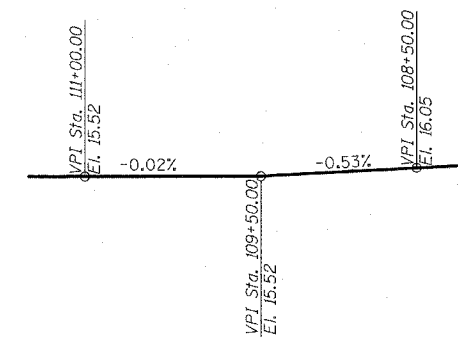
Max. Soil Pressure Under Footing = 1800 psf

**PROFILE GRADE**

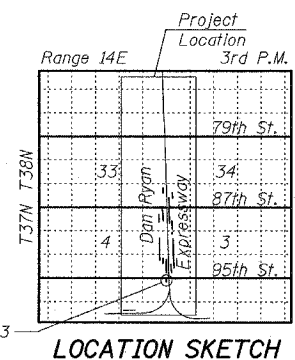


**PROFILE GRADE**

(Lafayette Ave.)



WARNING: Existing conduit servicing the CTA transformer at the south corner of Lafayette Ave. and 95th Street crosses under the proposed Knee Wall. Location of conduit placed per existing plans and may not reflect actual location.



REVISIONS	
NAME	DATE

ILLINOIS DEPARTMENT OF TRANSPORTATION  
 F.A.I. 94 (DAN RYAN EXPRESSWAY)  
 RETAINING WALL ALONG LAFAYETTE AVE.  
 AT 95TH ST.  
 WALL 33 - GENERAL PLAN  
 STA. 1203+26.72 TO STA. 1205+11.63  
 S.N. 016-W959  
 SCALE: N.T.S.  
 DATE: APRIL 15, 2005

DESIGNED BY: MI, TB  
 DRAWN BY: DJR, TB  
 CHECKED BY: TD, MI