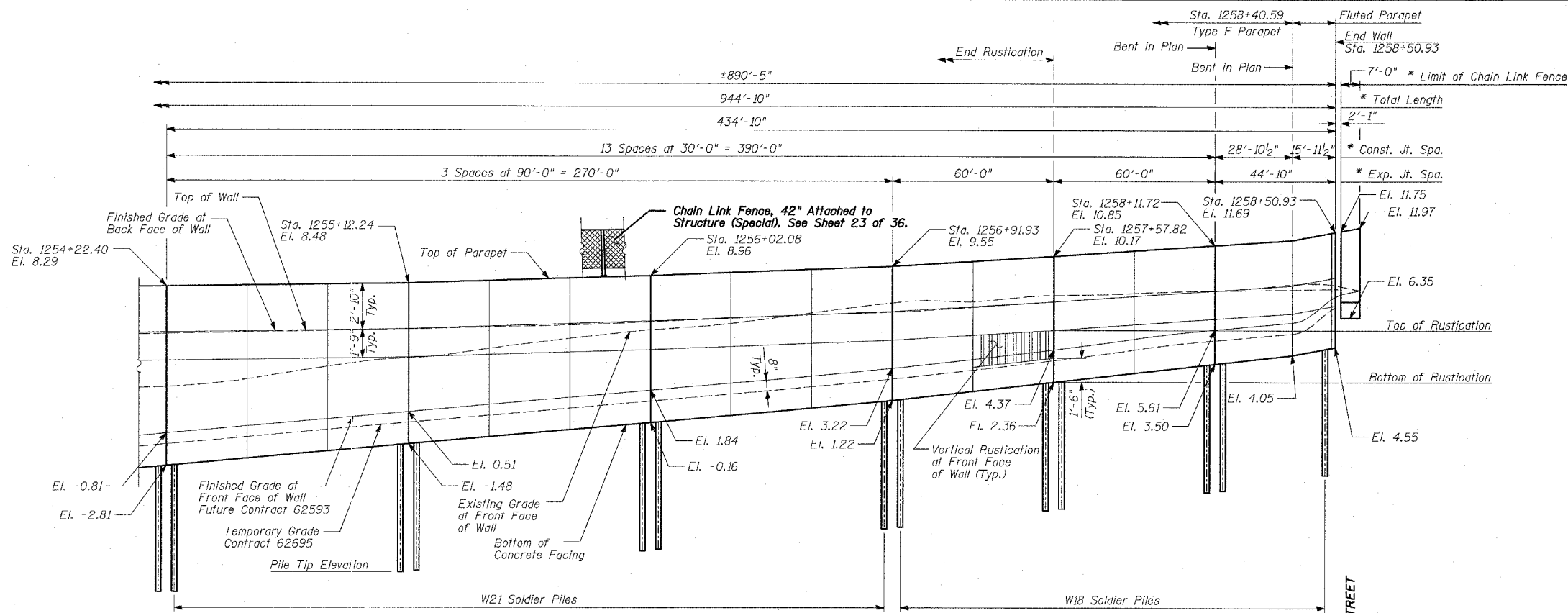
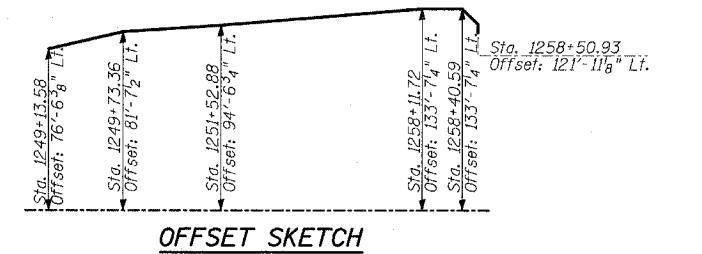


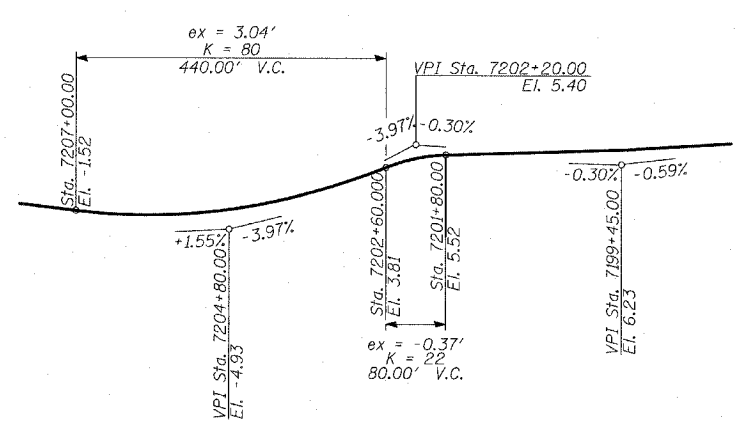
F.A.I. RTE.	SECTION	COUNTY	TOTAL SHEETS	SHEET NO.
94		COOK	36	18
STA. 1200+00.00 TO STA. 1330+00.00				
FED. ROAD DIST. NO.		ILLINOIS	FED. AID PROJECT	
				62931



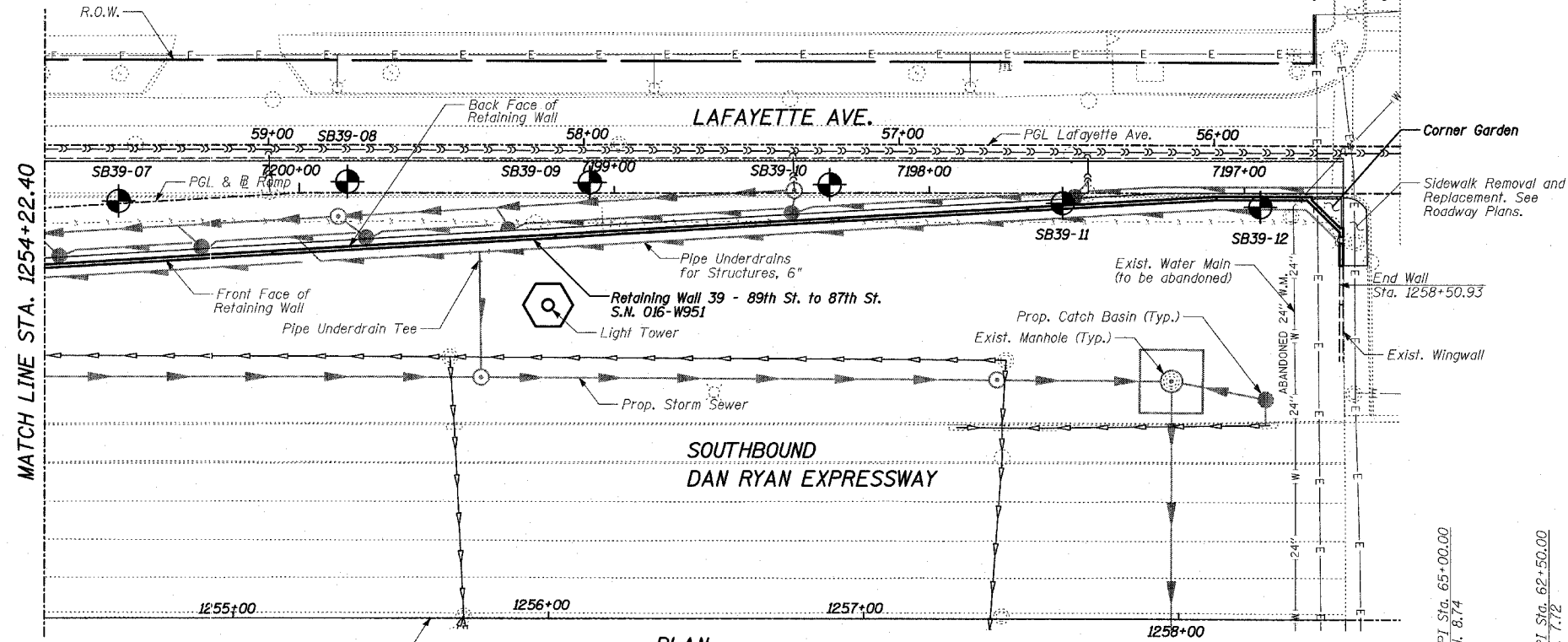
ELEVATION
(Sta. 1254+22.40 to Sta. 1258+51.87)



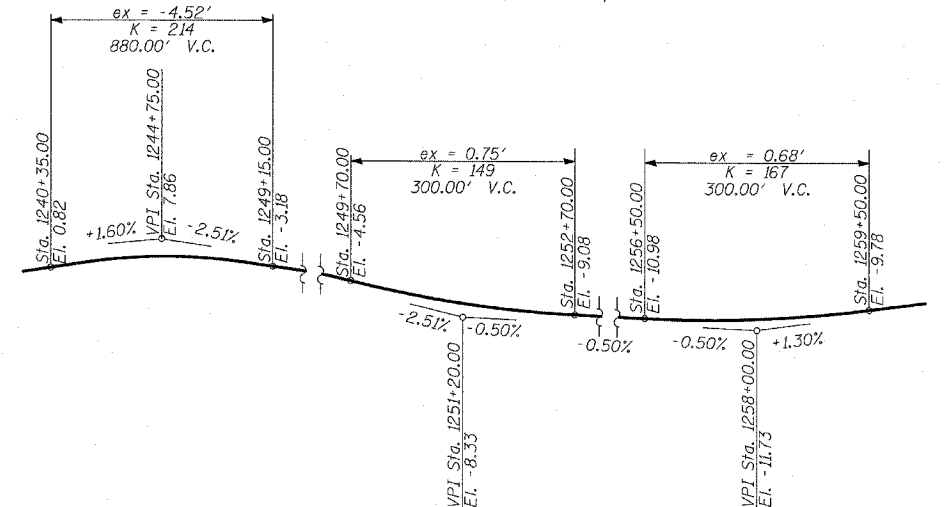
OFFSET SKETCH



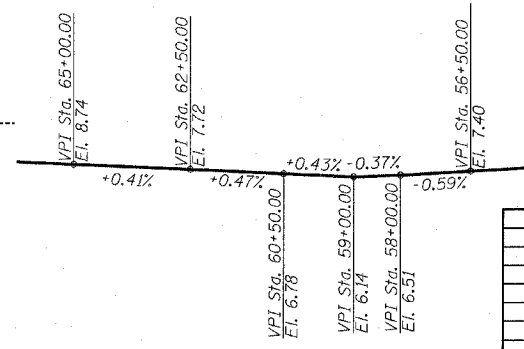
PROFILE GRADE
(Ramp)



PLAN
(Sta. 1254+22.40 to Sta. 1258+50.93)



PROFILE GRADE
(Southbound I-94)



PROFILE GRADE
(Lafayette Av.)

LEGEND
 Boring Location
 * Measured along Front Face of Wall.

REVISIONS	
NAME	DATE

ILLINOIS DEPARTMENT OF TRANSPORTATION
 F.A.I. 94 (DAN RYAN EXPRESSWAY)
 RETAINING WALL ALONG LAFAYETTE AVE.
 89TH ST. TO 87TH ST.
 WALL 39 - GENERAL PLAN
 STA. 1249+13.58 TO STA. 1258+50.93
 S.N. 016-W951
 SCALE: N.T.S.
 DATE: APRIL 15, 2005

DESIGNED BY: MI, TB
 DRAWN BY: DJR, TB
 CHECKED BY: TD, MI

TYLIN INTERNATIONAL

1/14/2005 7:16:03 AM