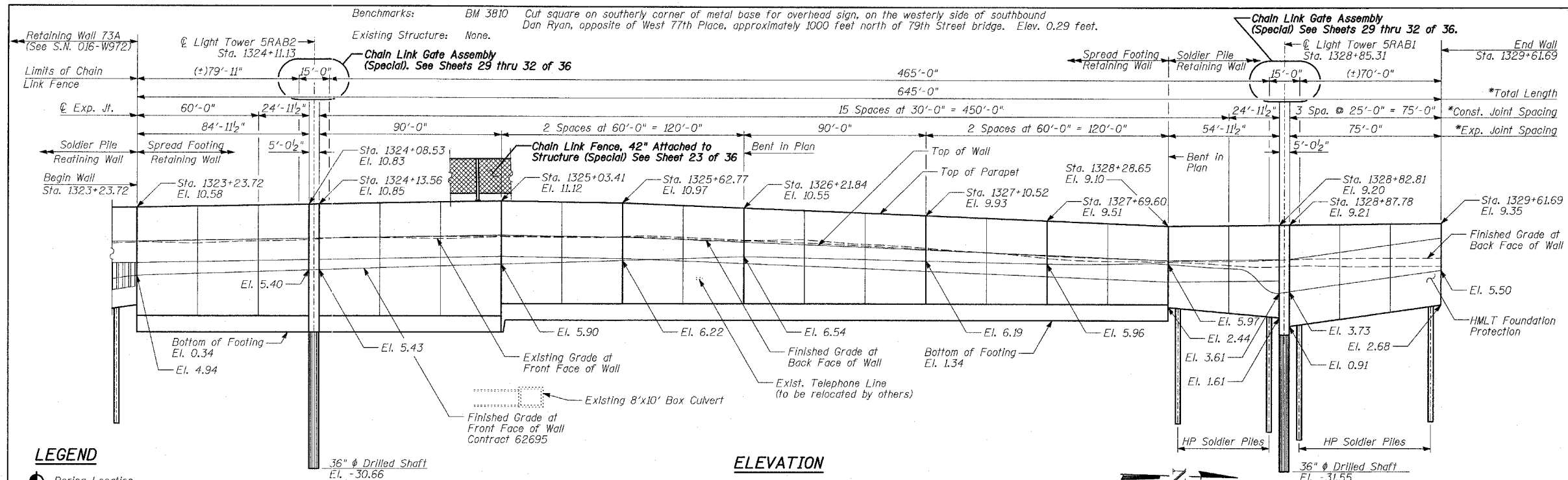


Benchmarks: BM 3810 Cut square on southerly corner of metal base for overhead sign, on the westerly side of southbound Dan Ryan, opposite of West 77th Place, approximately 1000 feet north of 79th Street bridge. Elev. 0.29 feet.

Existing Structure: None.

F.A.I. RTE.	SECTION	COUNTY	TOTAL SHEETS	SHEET NO.
94		COOK	36	22
STA. 1200+00.00 TO STA. 1330+00.00				
FED. ROAD DIST. NO.		ILLINOIS	FED. AID PROJECT	
(1516.1, 1717 & 1818) I-2		62931		



ELEVATION

**LEGEND**  
 Boring Location  
 \* Measured along Front Face of Wall.

**DESIGN SPECIFICATION**

AASHTO 2002 Standard Specifications for Highway Bridges

**DESIGN STRESSES**  
**FIELD UNITS**

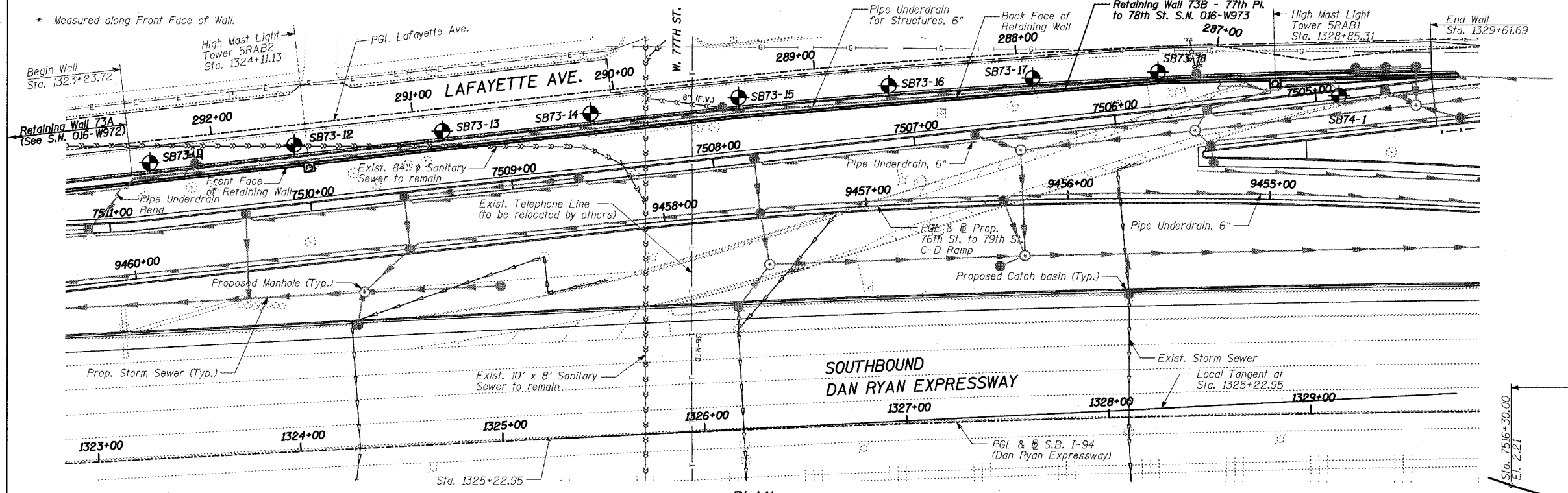
f'c = 3,500 psi  
 fy = 60,000 psi (Reinforcement)

**LOADING**

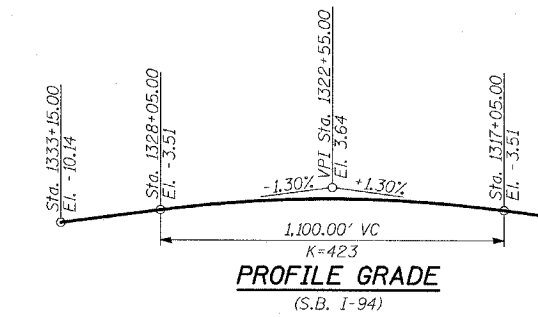
Maximum soil pressure under footings is 2200 psf.

**CURVE DATA**

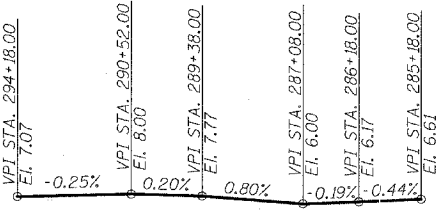
S.B. I-94 SBDRO3:  
 Δ = 3° 16' 11.04" (RT)  
 D = 0° 30' 28.59"  
 R = 11,280.00  
 L = 643.72  
 E = 4.59  
 T = 321.95  
 P.C. STA = 1325+22.95  
 P.I. STA = 1328+44.90  
 P.T. STA = 1331+66.67



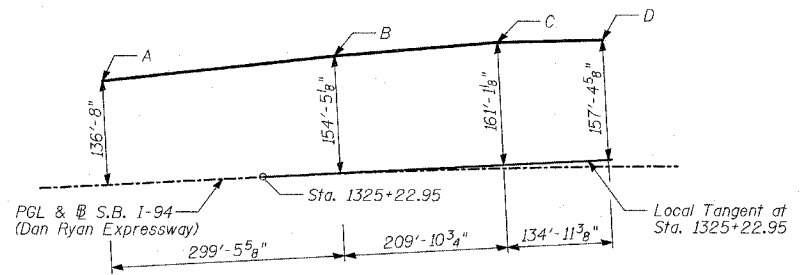
PLAN



PROFILE GRADE (S.B. I-94)

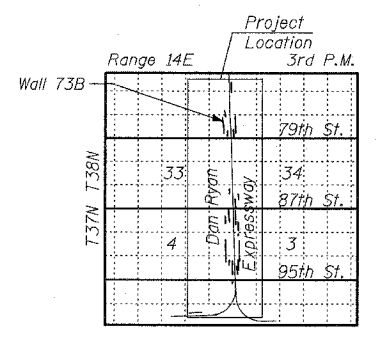


PROFILE GRADE (Lafayette Ave.)

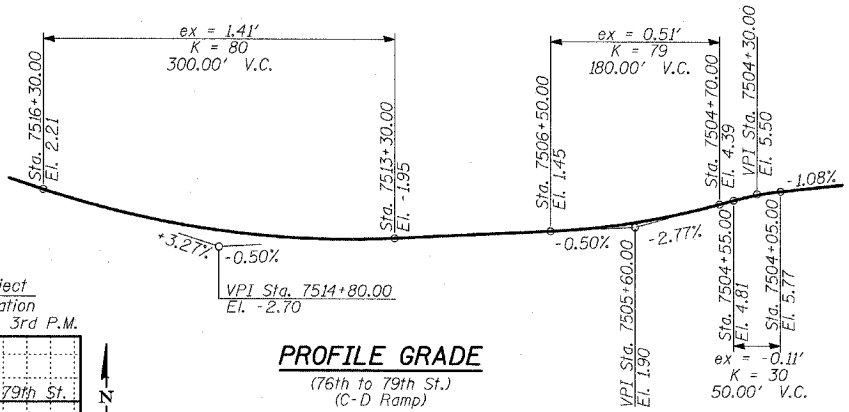


OFFSET SKETCH

Point	Sta.	Offset to S.B. I-57
A	1323+23.72	136'-8" Lt.
B	1326+21.84	154'-10 <sup>5</sup> / <sub>8</sub> " Lt.
C	1328+28.65	165'-3 <sup>1</sup> / <sub>2</sub> " Lt.
D	1329+61.69	166'-0 <sup>5</sup> / <sub>8</sub> " Lt.



LOCATION SKETCH



PROFILE GRADE (76th to 79th St.) (C-D Ramp)

REVISIONS	
NAME	DATE

ILLINOIS DEPARTMENT OF TRANSPORTATION  
**F.A.I. 94 (DAN RYAN EXPRESSWAY)**  
**RETAINING WALL ALONG LAFAYETTE AVE.**  
**77TH PL. TO 78TH ST.**  
**WALL 73B - GENERAL PLAN**  
 STA. 1323+23.72 TO STA. 1329+61.69  
 S.N. 016-W973  
 SCALE: N.T.S.  
 DATE: APRIL 15, 2005

DESIGNED BY: MI, DJR  
 DRAWN BY: DJR  
 CHECKED BY: TD, MI

7/14/2005 7:48:28 AM