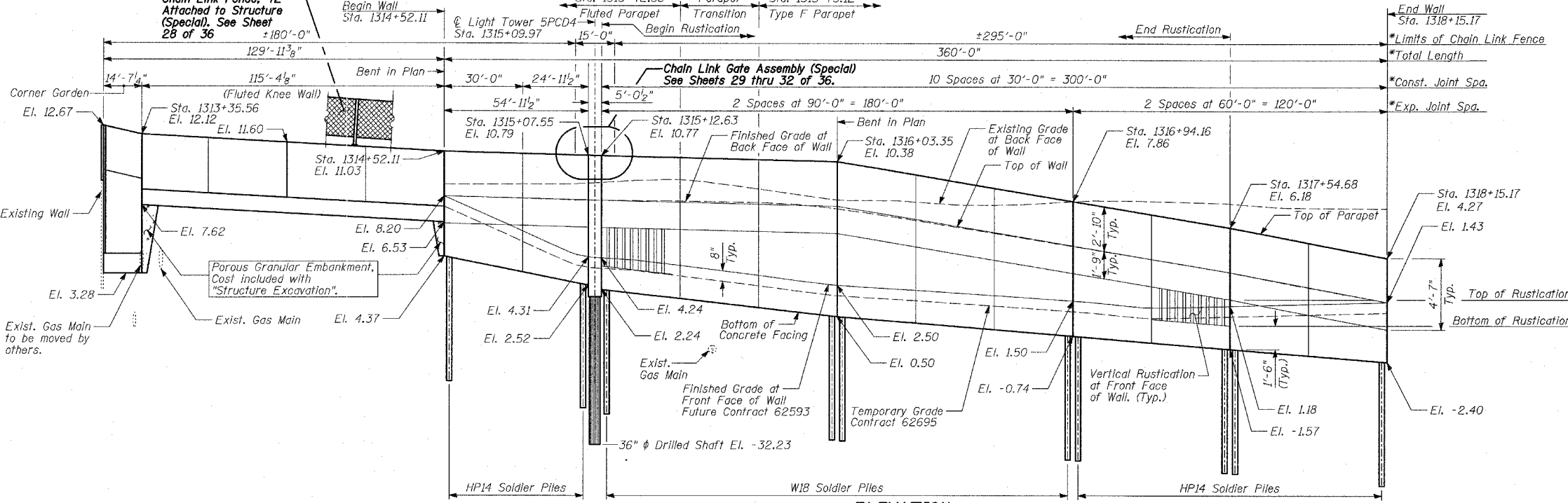


Benchmarks: BM 3810 Cut square on southerly corner of metal base for overhead sign, on the westerly side of southbound Dan Ryan, opposite of West 77th Place, approximately 1000 feet north of 79th Street bridge. Elev. 0.29 feet.
 BM 3811 Cut square on southeasterly corner of metal base for overhead sign, on the westerly side of southbound Dan Ryan approximately 840 feet southerly of 83rd Street. Elev. 1.95 feet.

Existing Structure: None.



DESIGN SPECIFICATION

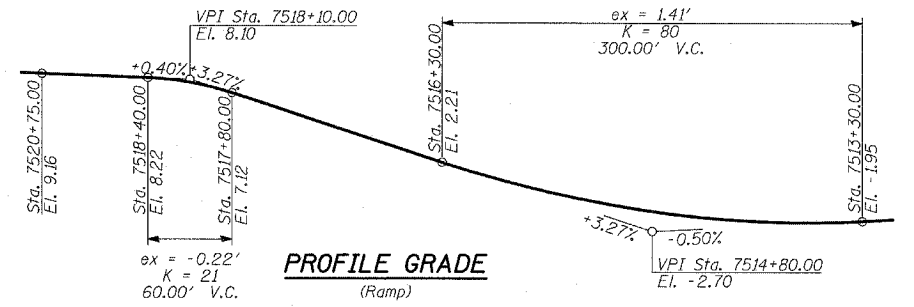
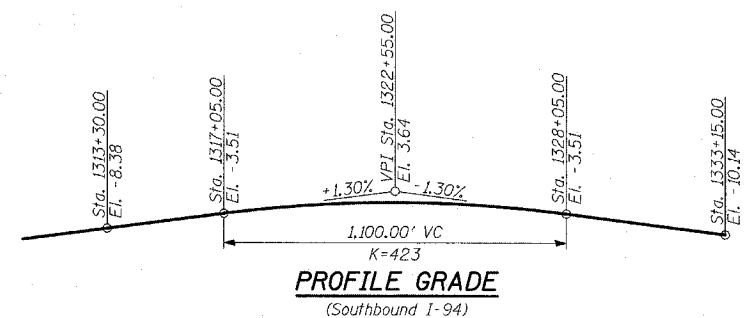
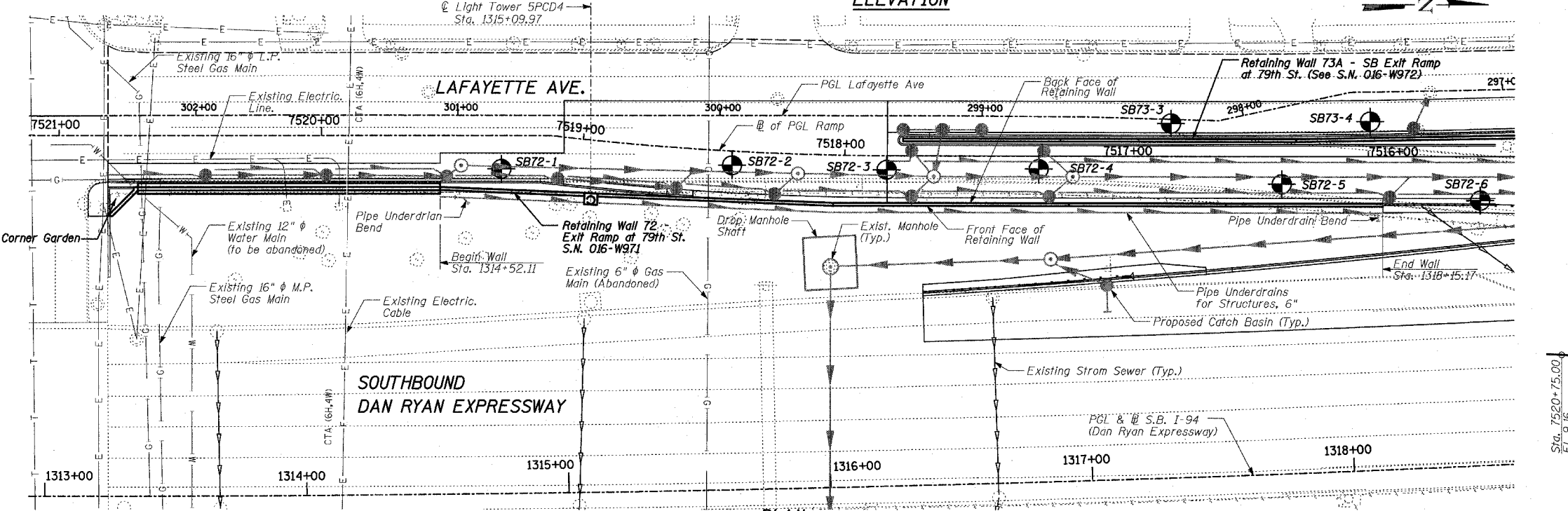
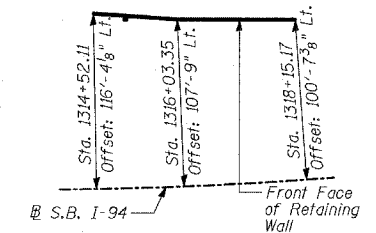
AASHTO 2002 Standard Specifications for Highway Bridges

DESIGN STRESSES
FIELD UNITS

f'c = 3,500 psi
 fy = 60,000 psi (Reinforcement)
 fy = 36,000 psi (M270 Grade 36) Solder Piles

LOADING

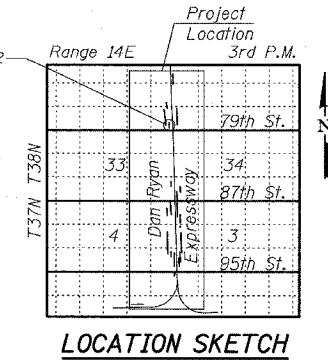
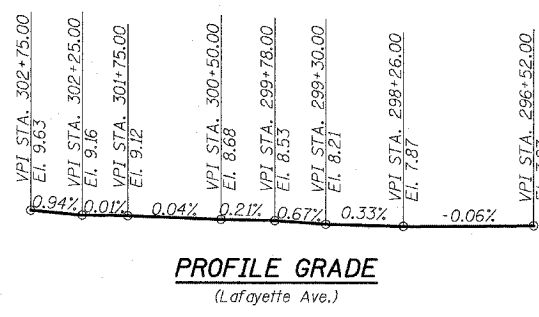
Maximum soil pressure under footings is 2250 psf.



LEGEND
 ● Boring Location
 * Measured along Front Face of Wall.

GENERAL NOTES:

TYLIN INTERNATIONAL



REVISIONS	
NAME	DATE

ILLINOIS DEPARTMENT OF TRANSPORTATION
 F.A.I. 94 (DAN RYAN EXPRESSWAY)
 SOUTHBOUND EXIT RAMP RETAINING WALL
 AT 79TH ST.
 WALL 72 - GENERAL PLAN
 STA. 1314+52.11 TO STA. 1318+15.17
 S.N. 016-W971
 SCALE: N.T.S.
 DATE: APRIL 15, 2005

DESIGNED BY: MI, MAF
 DRAWN BY: MAF, DJR
 CHECKED BY: TD, MI

P:0231; S:road; J:Ng; J:Jr; S:9; 4/14/2005 7:48:55 AM