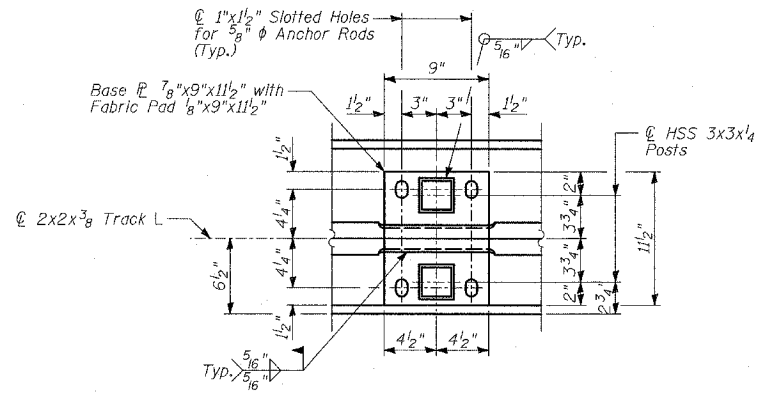
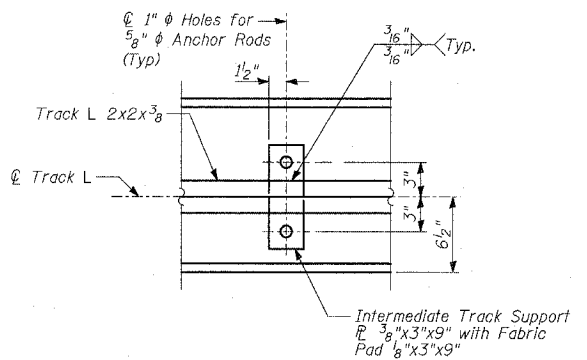


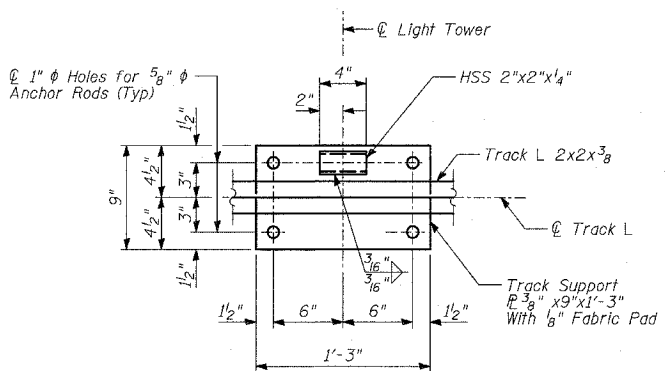
PLAN - GATE IN OPEN POSITION



DETAIL 1 - BASE P PLAN



DETAIL 2



DETAIL 3

BILL OF MATERIAL

WALL	ITEM	UNIT	TOTAL
36	Chain Link Gate Assembly (Special)	EACH	1
38	Chain Link Gate Assembly (Special)	EACH	1
72	Chain Link Gate Assembly (Special)	EACH	1
73A	Chain Link Gate Assembly (Special)	EACH	1
73B	Chain Link Gate Assembly (Special)	EACH	2
	TOTAL	EACH	6

NOTES:

- All rods shall be stainless steel conforming to ASTM F593-98 and F594-98.
- All pipes and bars shall be hot dipped galvanized after fabrication.
- For Back Face Elevations, see Sheet 30 of 36.
- For Anchor Rod Details, see Sheet 31 of 36.

REVISIONS	
NAME	DATE

ILLINOIS DEPARTMENT OF TRANSPORTATION
F.A.I. 94 (DAN RYAN EXPRESSWAY)
WALLS 36, 38, 72, 73A, 73B
GATE PLAN AND NOTES

SCALE: N.T.S.
 DATE: APRIL 15, 2005
 DESIGNED BY: MI, DJR
 DRAWN BY: DJR
 CHECKED BY: TD, MI

4/14/2005 1:48:58 AM
 P:\0237\3\0237.dwg
 7/18/05