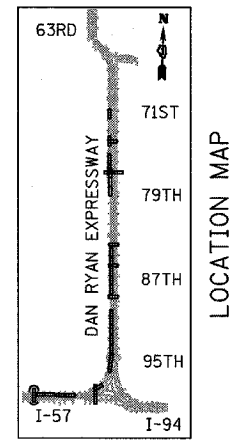
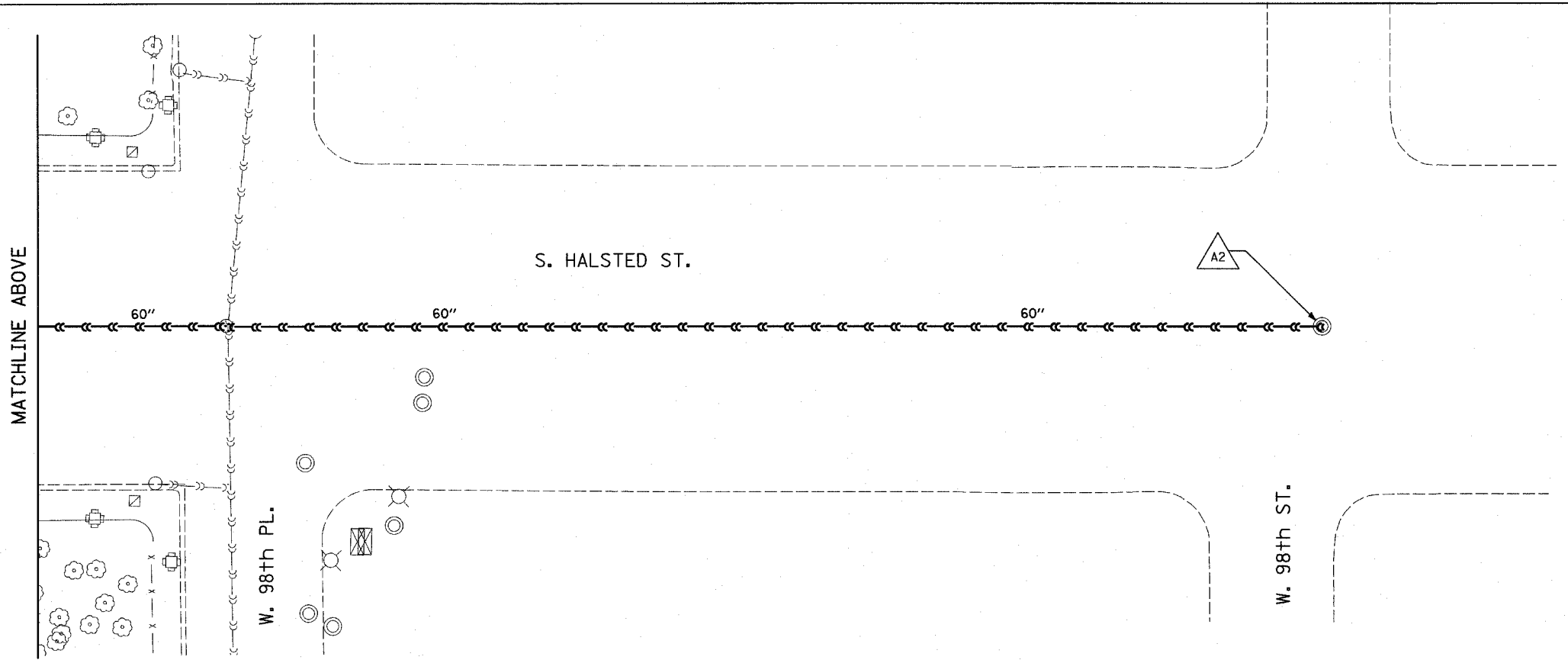
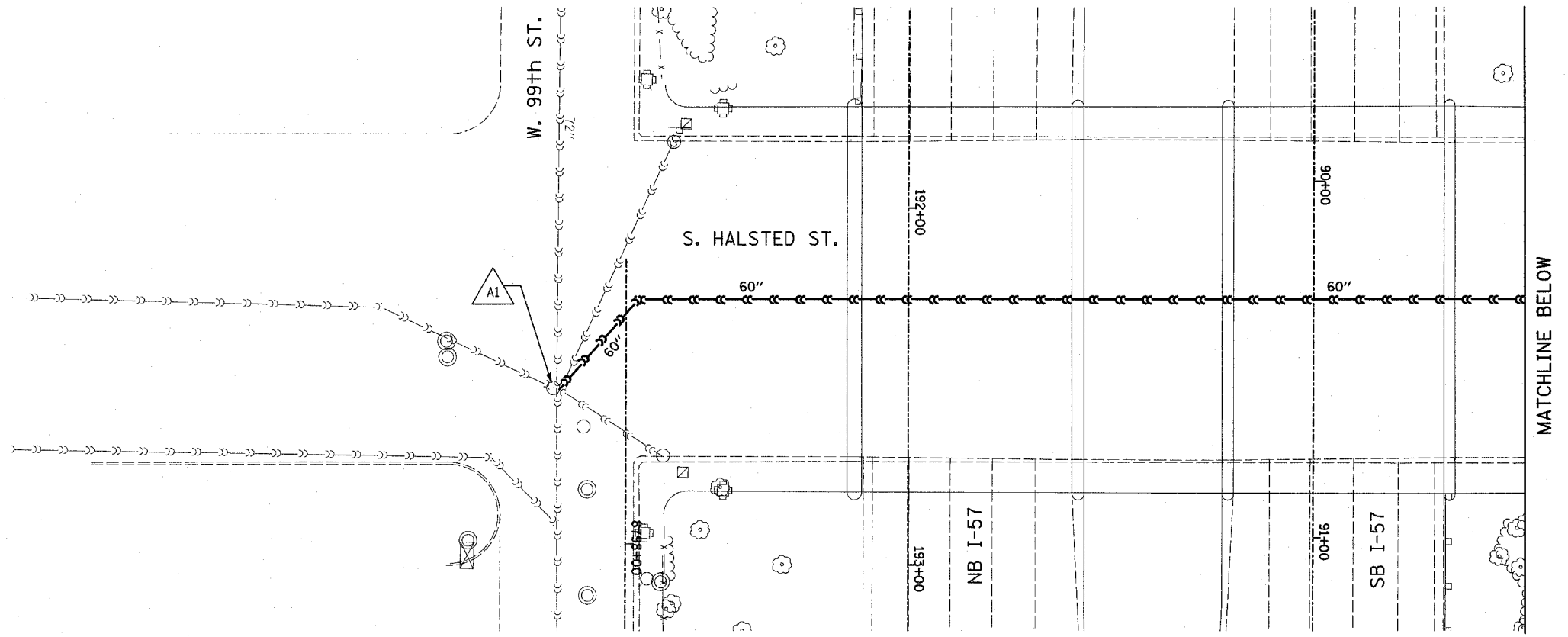
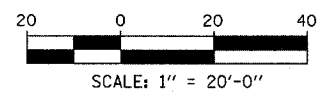


|                     |         |                           |              |           |
|---------------------|---------|---------------------------|--------------|-----------|
| F.A.I. RTE.         | SECTION | COUNTY                    | TOTAL SHEETS | SHEET NO. |
| 98                  |         | COOK                      | 29           | 8         |
| STA. 2200+00.00     |         | TO STA. 2362+00.00        |              |           |
| FED. ROAD DIST. NO. |         | ILLINOIS FED. AID PROJECT |              |           |
|                     |         |                           |              | 62935     |



LOCATION MAP



**TYLIN** INTERNATIONAL

**LEGEND:**

- EXISTING COMBINED SEWER
- - - EXISTING COMBINED SEWER TO BE TELEVIEWED
- △ XY MANHOLE STRUCTURE NO.

| REVISIONS |      |
|-----------|------|
| NAME      | DATE |
|           |      |
|           |      |
|           |      |
|           |      |
|           |      |
|           |      |
|           |      |
|           |      |
|           |      |
|           |      |

ILLINOIS DEPARTMENT OF TRANSPORTATION  
**F.A.I. 94 (DAN RYAN EXPRESSWAY)**  
**SEWER TELEVIEWING**  
**HALSTED ST. CROSSING**  
 SCALE: 1"=20'-0"  
 DATE: APRIL 15, 2005  
 DRAWN BY: AMB, DE  
 CHECKED BY: TGB

9/24/05 AM