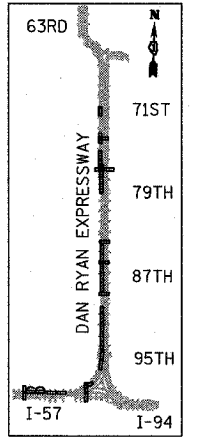
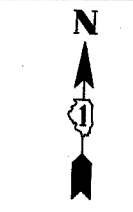
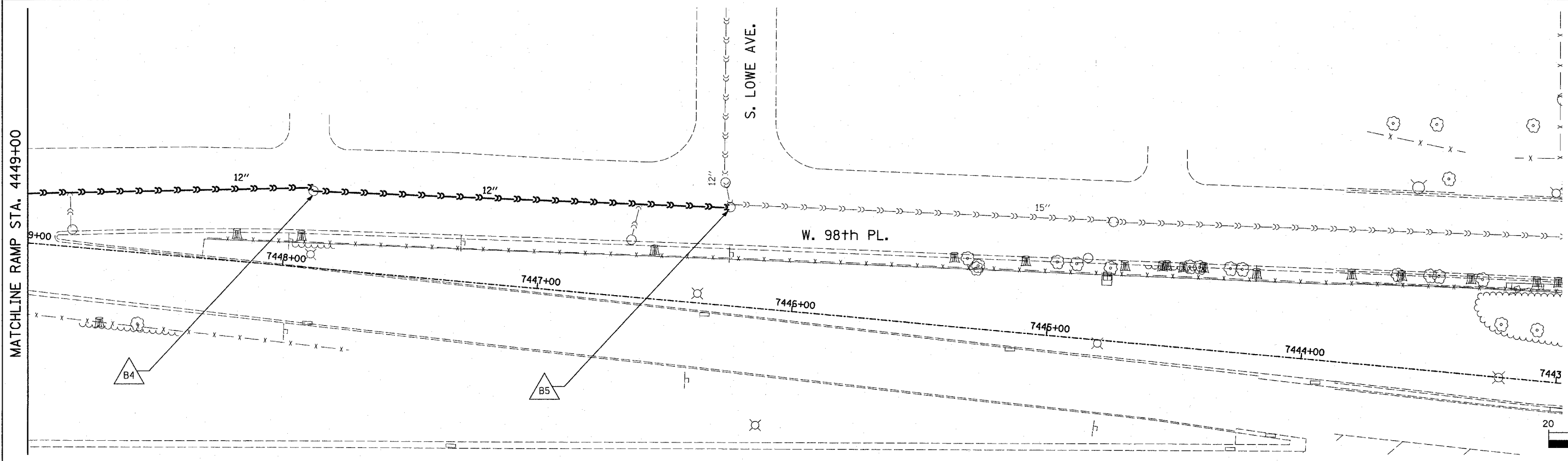
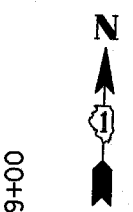
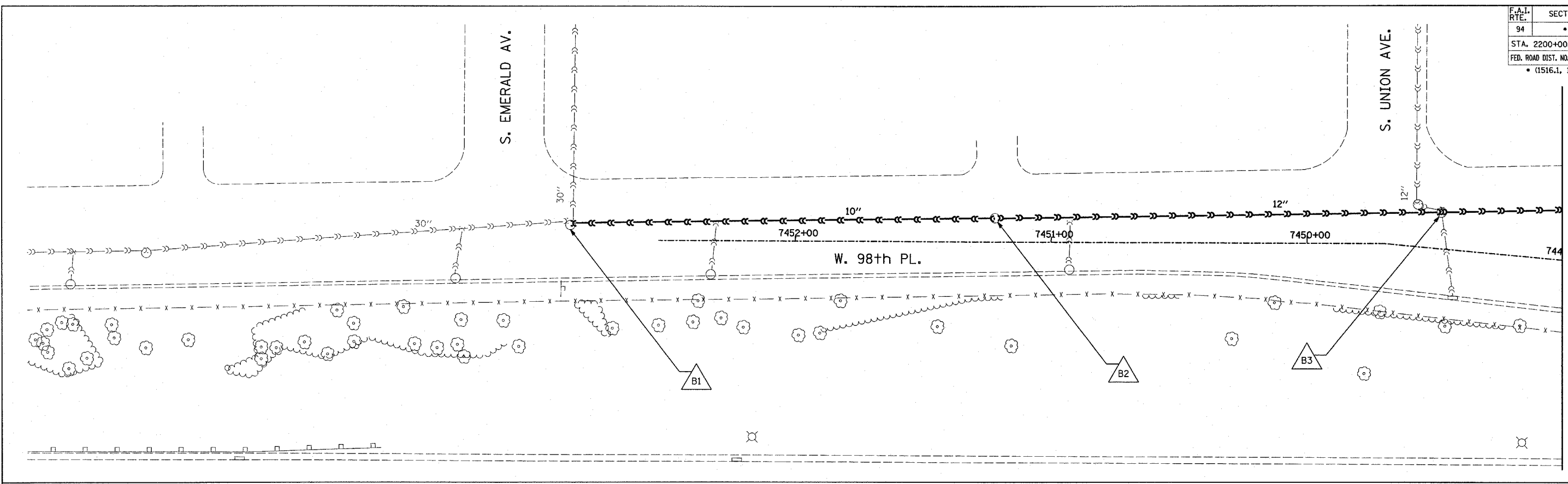
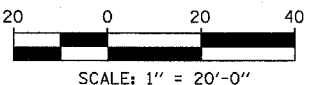


F.A.I. RTE.	SECTION	COUNTY	TOTAL SHEETS	SHEET NO.
94		COOK	29	9
STA. 2200+00.00		TO STA. 2362+00.00		
FED. ROAD DIST. NO.		ILLINOIS FED. AID PROJECT		
		• (1516.1, 1717 & 1818) T-1		
62935				



LOCATION MAP



- LEGEND:**
- EXISTING COMBINED SEWER
 - EXISTING COMBINED SEWER TO BE TELEVIEWED
 - XY MANHOLE STRUCTURE NO.

REVISIONS	
NAME	DATE

ILLINOIS DEPARTMENT OF TRANSPORTATION
 F.A.I. 94 (DAN RYAN EXPRESSWAY)
**SEWER TELEVIEWING
 W. 98TH PLACE**

SCALE: 1"=20'-0"
 DATE: APRIL 15, 2005

DRAWN BY: AMB
 CHECKED BY: TGB

TYLIN INTERNATIONAL