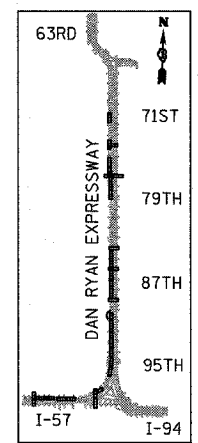
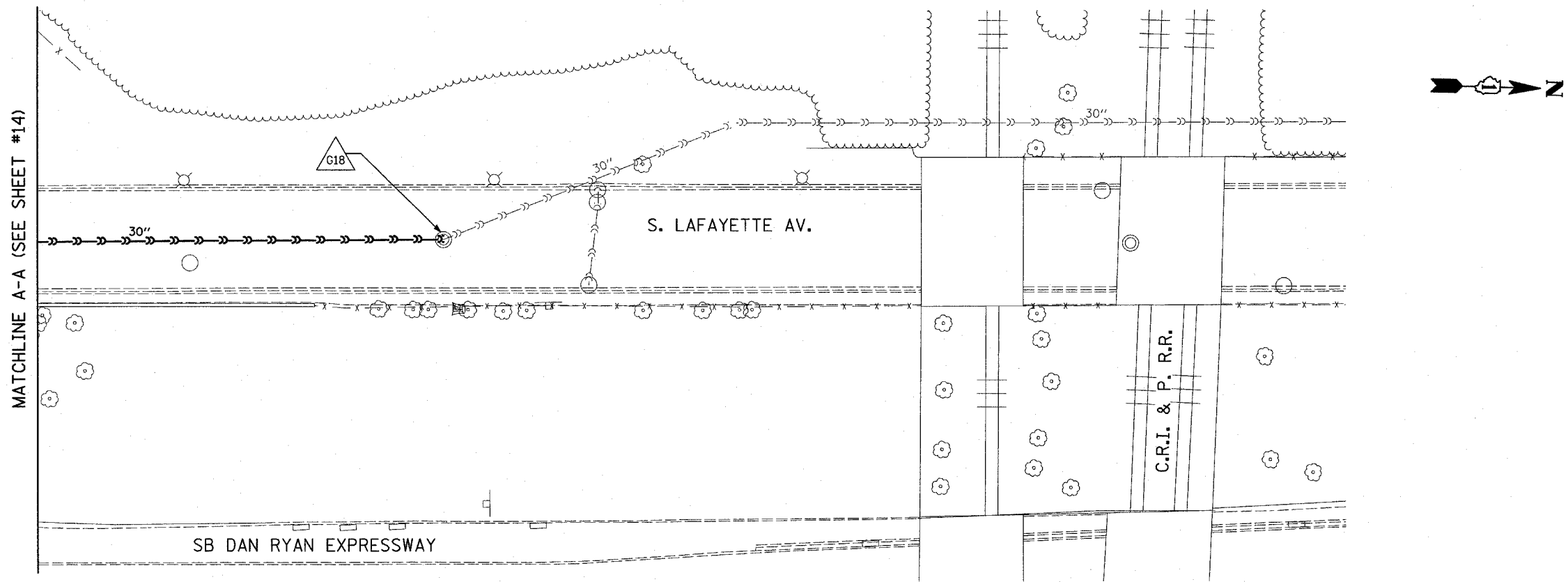
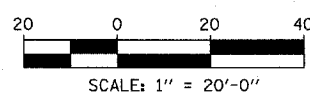


F.A.I. RTE.	SECTION	COUNTY	TOTAL SHEETS	SHEET NO.
94	•	COOK	29	16
STA. 2200+00.00		TO STA. 2362+00.00		
FED. ROAD DIST. NO.		ILLINOIS	FED. AID PROJECT	
				62935



LOCATION MAP



TYLIN INTERNATIONAL

- LEGEND:**
- — — — — EXISTING COMBINED SEWER
 - — — — — EXISTING COMBINED SEWER TO BE TELEVISED
 - △ XY MANHOLE STRUCTURE NO.

REVISIONS	
NAME	DATE

ILLINOIS DEPARTMENT OF TRANSPORTATION
F.A.I. 94 (DAN RYAN EXPRESSWAY)
SEWER TELEVISIONING
S. LAFAYETTE AVE.

SCALE: 1"=20'-0"
DATE: APRIL 15, 2005

DRAWN BY: DE
CHECKED BY: TGB