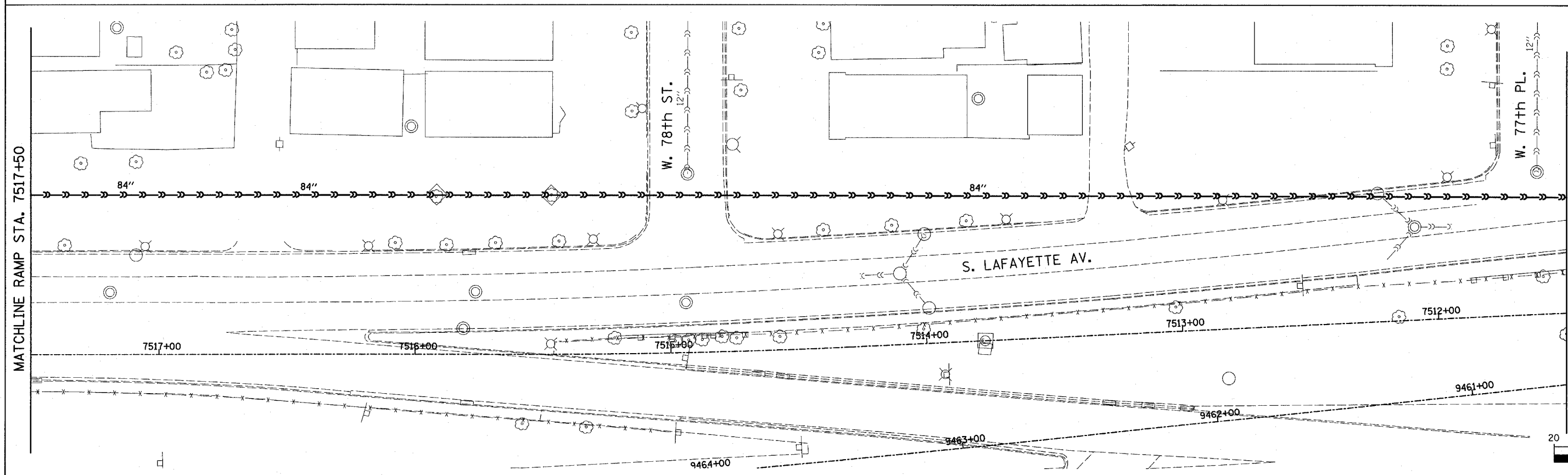
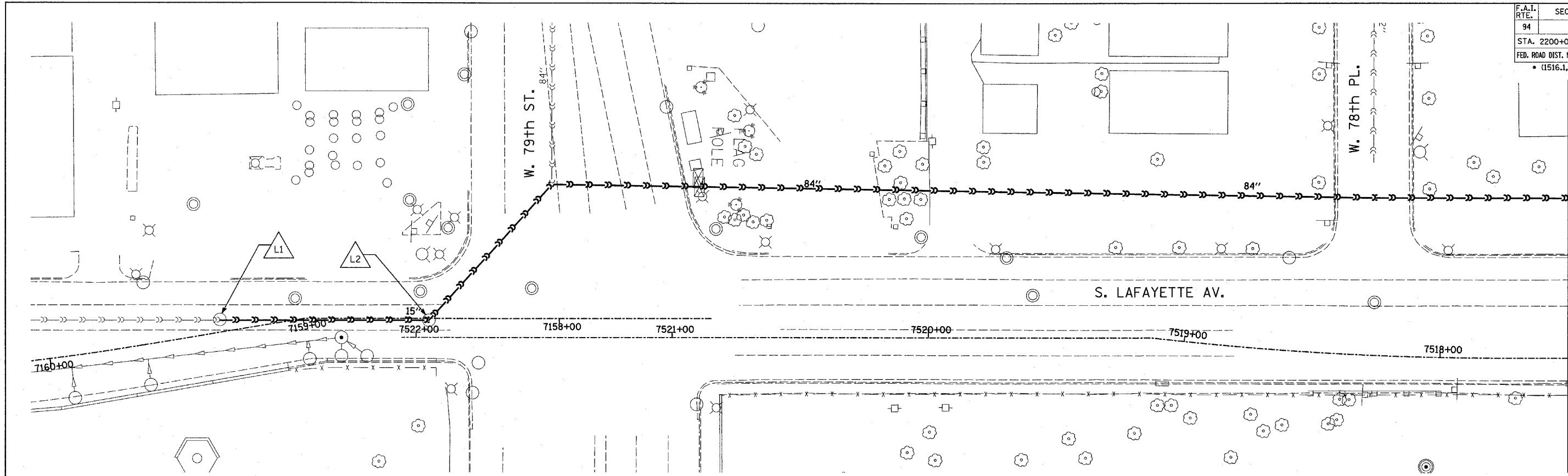
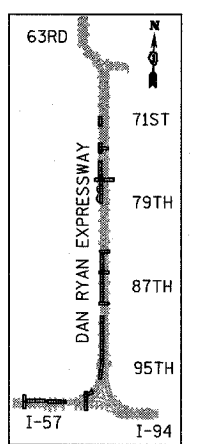


F.A.I. RTE.	SECTION	COUNTY	TOTAL SHEETS	SHEET NO.
94		COOK	29	22
STA. 2200+00.00		TO STA. 2362+00.00		
FED. ROAD DIST. NO.		ILLINOIS FED. AID PROJECT		
		• (1516.1, 1717 & 1818) T-1		
				62935

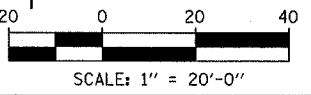


MATCHLINE RAMP STA. 7517+50

MATCHLINE RAMP STA. 7511+50



LOCATION MAP



LEGEND:

- — — — — EXISTING COMBINED SEWER
- — — — — EXISTING COMBINED SEWER TO BE TELEVISIED
- △ XY MANHOLE STRUCTURE NO.

REVISIONS	
NAME	DATE

ILLINOIS DEPARTMENT OF TRANSPORTATION
F.A.I. 94 (DAN RYAN EXPRESSWAY)

**SEWER TELEVISING
S. LAFAYETTE AVE.**

SCALE: 1"=20'-0"
DATE: APRIL 15, 2005

DRAWN BY: AMB
CHECKED BY: TGB

TYLIN INTERNATIONAL

9/14/2005 9:27:05 AM