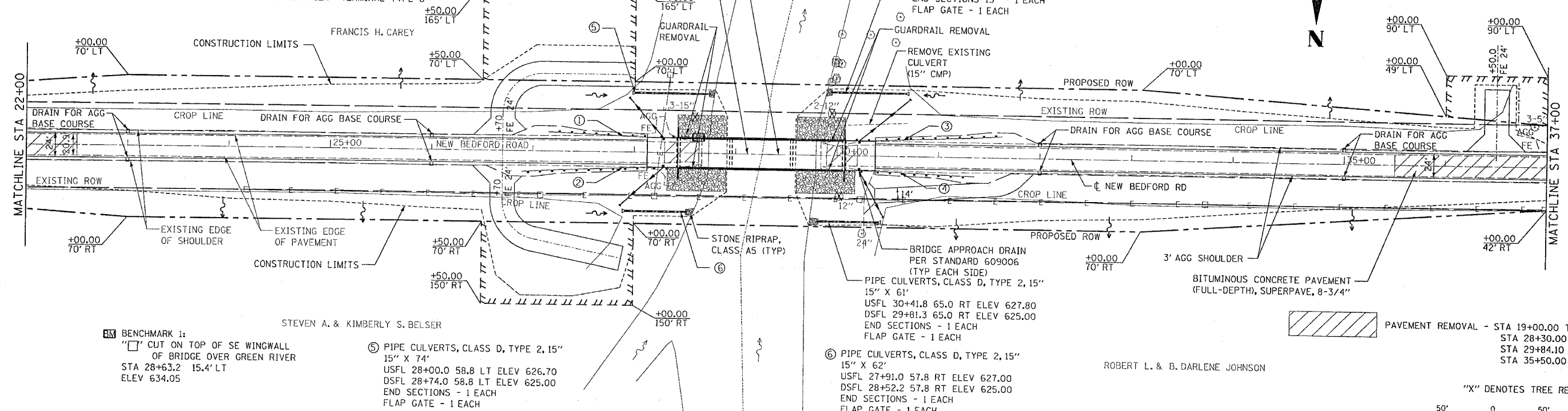


6423

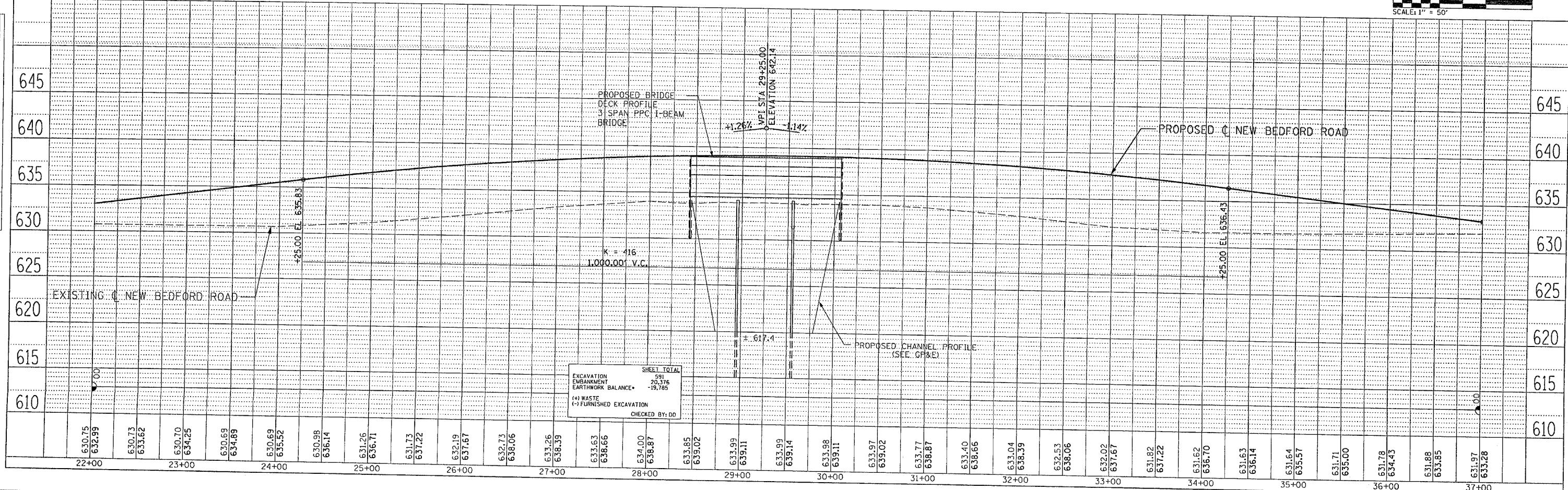
SBI	SECTION	COUNTY	TOTAL SHEETS	SHEET NO.
88	103C-BR	BUREAU	51	9
STA. 22+00		TO STA. 37+00		
FED. ROAD DIST. NO.		ILLINOIS FED. AID PROJECT		

- ① STEEL PLATE BEAM GUARD RAIL, TYPE A STA 27+39.09 RT TO STA 28+14.09 RT WITH TRAFFIC BARRIER TERMINAL TYPE 1, SPECIAL (FLARED) AND TRAFFIC BARRIER TERMINAL TYPE 6
- ② STEEL PLATE BEAM GUARD RAIL, TYPE A STA 27+64.09 RT TO STA 28+14.09 RT WITH TRAFFIC BARRIER TERMINAL TYPE 1, SPECIAL (FLARED) AND TRAFFIC BARRIER TERMINAL TYPE 6
- ③ STEEL PLATE BEAM GUARD RAIL, TYPE A STA 30+36.29 LT TO STA 31+11.29 LT WITH TRAFFIC BARRIER TERMINAL TYPE 1, SPECIAL (FLARED) AND TRAFFIC BARRIER TERMINAL TYPE 6
- ④ STEEL PLATE BEAM GUARD RAIL, TYPE A STA 30+36.29 RT TO STA 30+86.29 RT WITH TRAFFIC BARRIER TERMINAL TYPE 1, SPECIAL (FLARED) AND TRAFFIC BARRIER TERMINAL TYPE 6

PLAN	DATE
BY	
REVISIONS	
NO.	
DATE	
BY	
REVISIONS	
NO.	
DATE	
BY	



PROFILE	DATE
BY	
REVISIONS	
NO.	
DATE	
BY	
REVISIONS	
NO.	
DATE	
BY	



EXCAVATION	58
EMBANKMENT	20,376
EARTHWORK BALANCE*	-19,785
(+) WASTE	
(-) FURNISHED EXCAVATION	
CHECKED BY: DD	

NEW BEDFORD ROAD