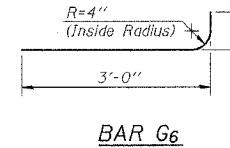
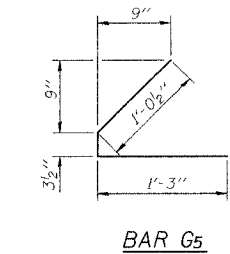
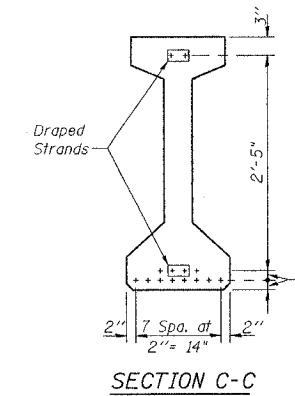
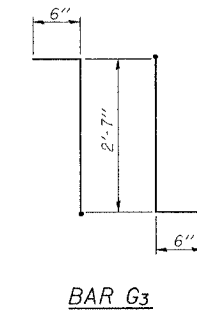
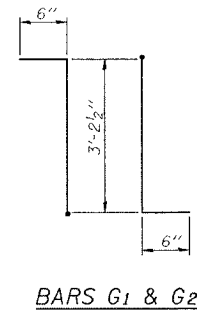
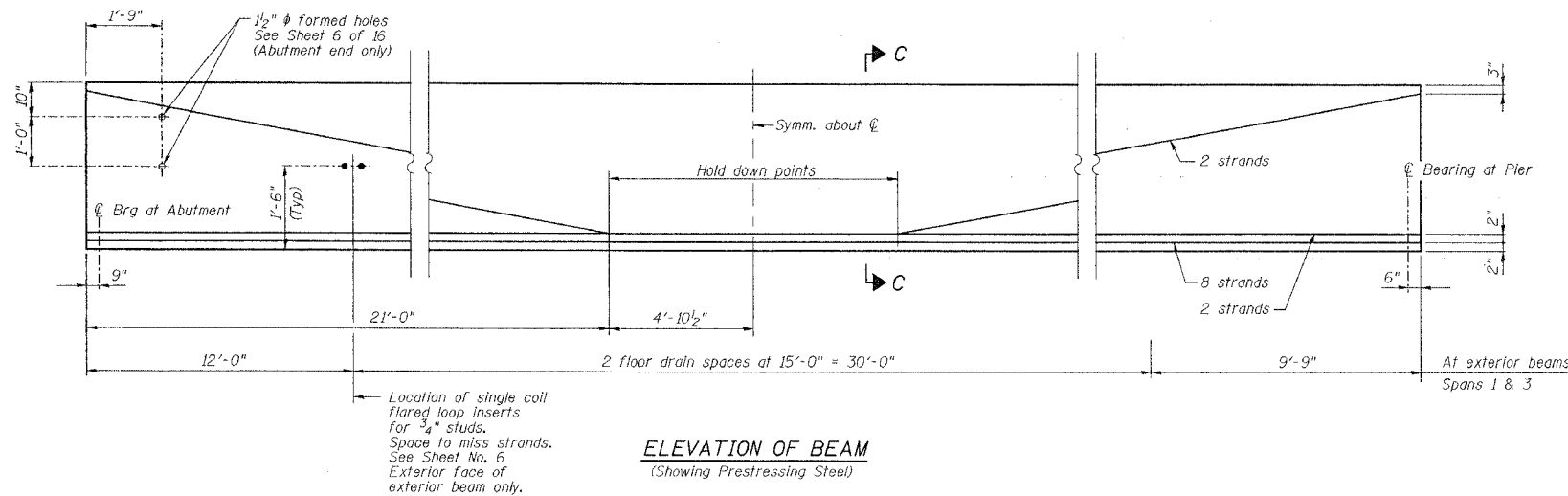
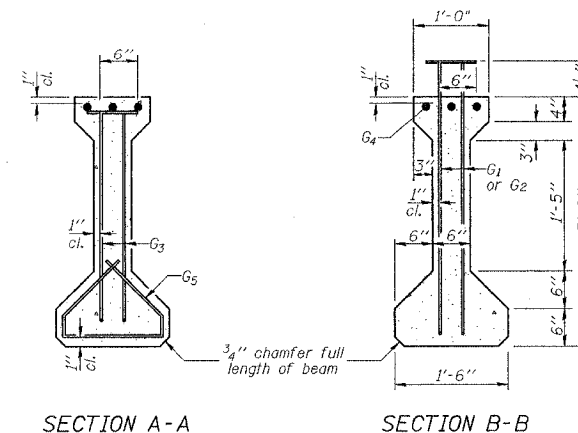
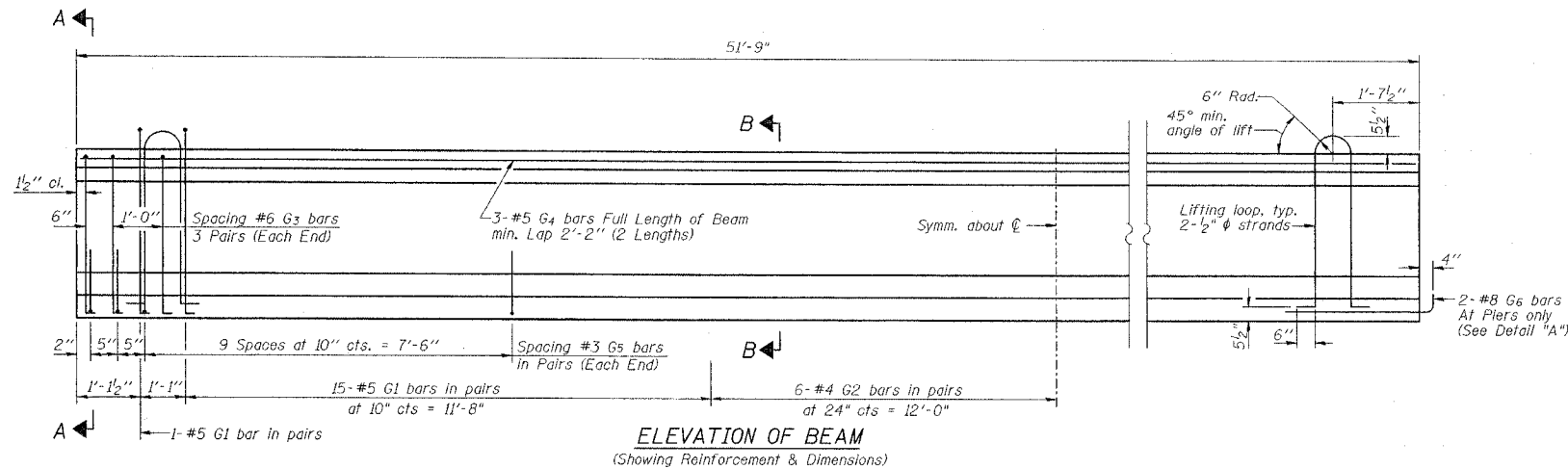


STATE OF ILLINOIS
DEPARTMENT OF TRANSPORTATION

Sheet No. 7
of 16 Sheets

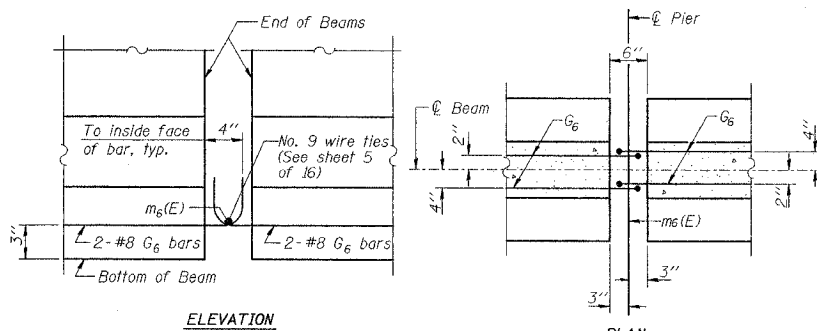
ROUTE NO.	SECTION	COUNTY	TOTAL SHEETS	SHEET NO.
SBI 88	I03C-BR	BUREAU	51	18
FED. ROAD DIST. NO.	ILLINOIS	PROJECT		
CONTRACT #64423				



***BAR LIST**

Bar	No.	Size	Length	Shape
G1	64	#5	4'-2 1/2"	TL
G2	24	#4	4'-2 1/2"	TL
G3	12	#6	3'-7"	TL
G4	6	#5	26'-10"	
G5	48	#3	2'-7"	L
G6	2	#8	3'-6"	

*For one beam only.



DETAIL "A"

1/2" FABRIC BEARING PAD
(10 req'd at piers - Span 1 & Span 3)

NOTES

- Inserts for 3/4" diameter threaded dowel rods are to be two strut, coil type for interior I-Beams and single coil, flared loop type for exterior I-Beams.
- Prestressing steel shall be uncoated high strength, low relaxation 7-wire strand, Grade 270.
- The nominal diameter shall be 1/2" and the nominal cross-sectional area shall be 0.153 sq. in.
- Non-prestressing steel shall conform to AASHTO designation M-31 or M-322 Grade 60.
- Lifting loops shall be 2-1/2" diameter 270 ksi strands, as shown.
- Required release strength, f'cl, shall be 5000 psi.
- Reinforcement bars designated (E) shall be epoxy coated.
- See Sheet No. 2 for moment tables.

BILL OF MATERIAL

Item	Unit	Total
Furnishing and Erecting Precast Prestressed Concrete I-Beams, 36"	Ft.	517.5

NEW BEDFORD ROAD OVER GREEN RIVER

BEAM DETAILS - SPANS 1 & 3

REVISIONS	STATE OF ILLINOIS DEPARTMENT OF TRANSPORTATION DIVISION OF HIGHWAYS	DRAWN BY DATE R King 4/04
1		CHECKED BY DATE CMV 4/04
2		CALC BY DATE CWC 4/04
3		BOOK NUMBER
4		
5		
6		
7		
8		
9		
10		
11		
12		