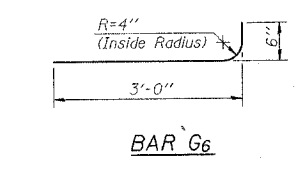
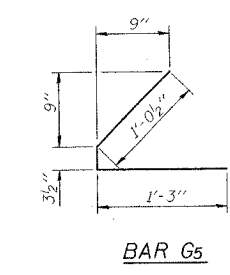
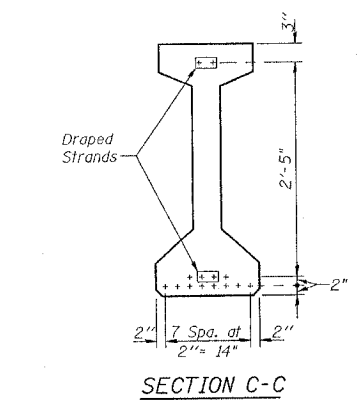
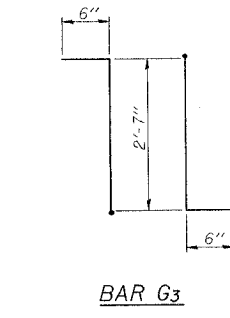
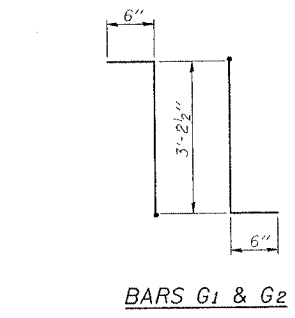
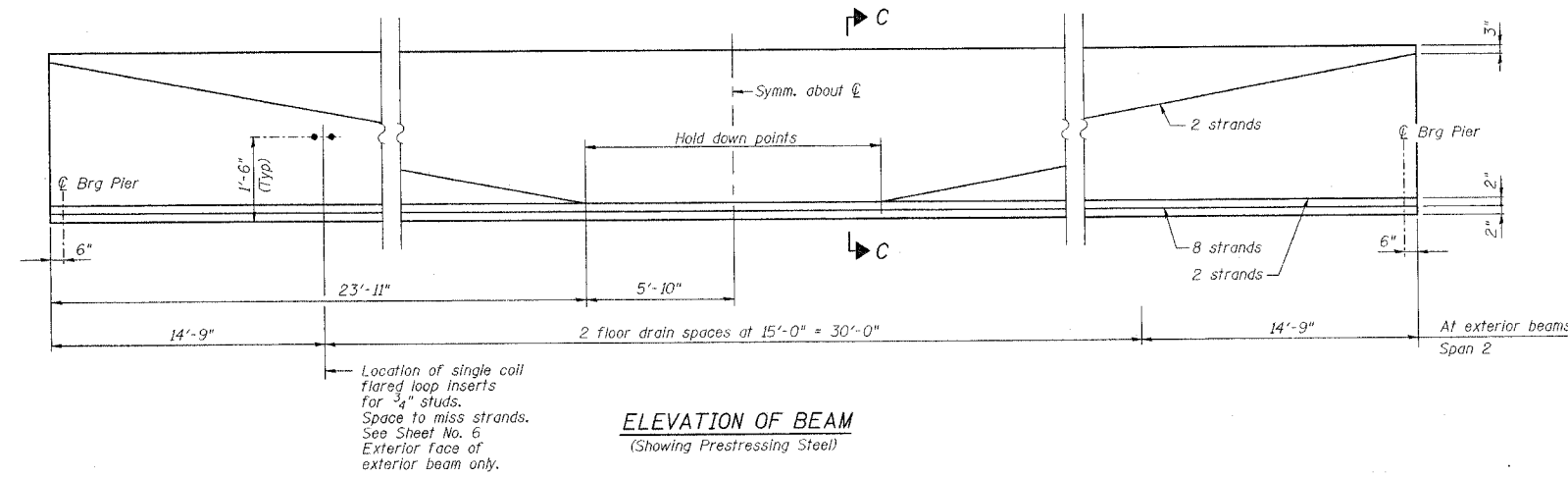
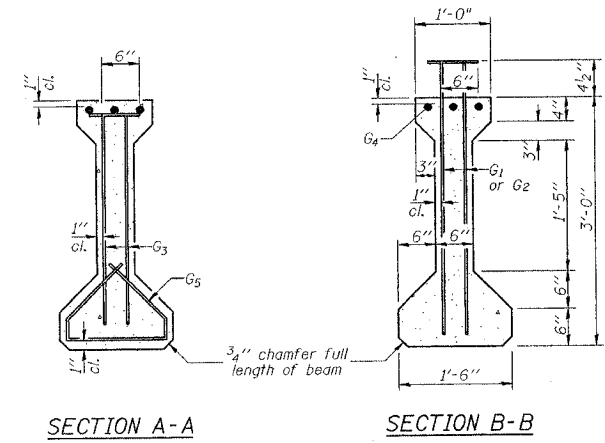
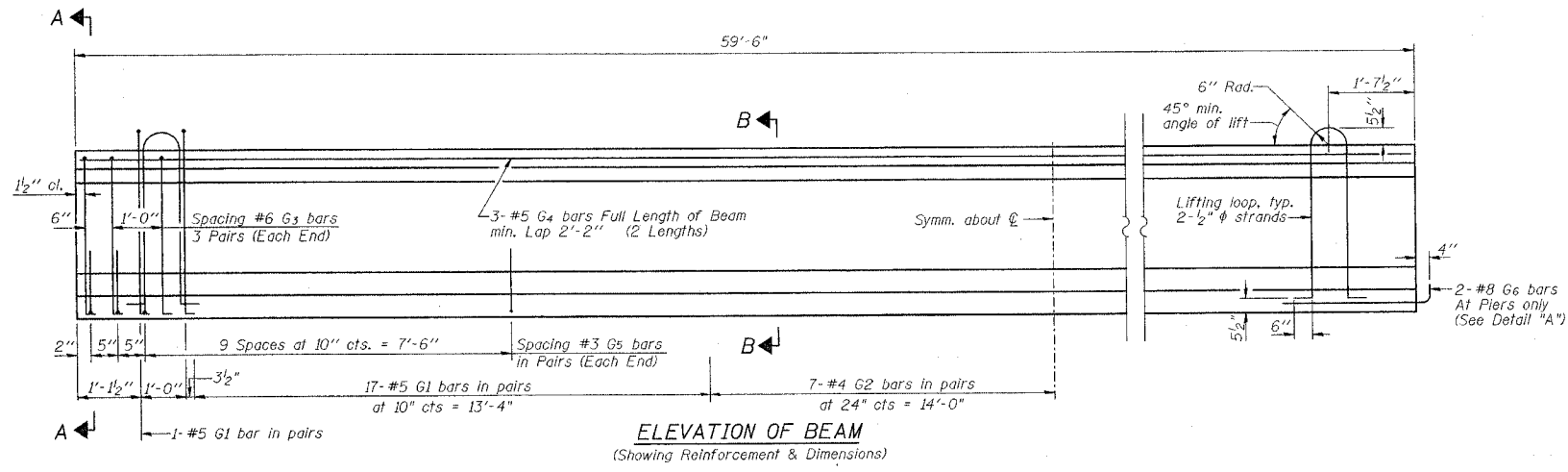


STATE OF ILLINOIS
DEPARTMENT OF TRANSPORTATION

Sheet No. 8
of 16 Sheets

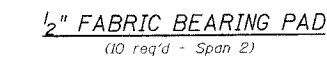
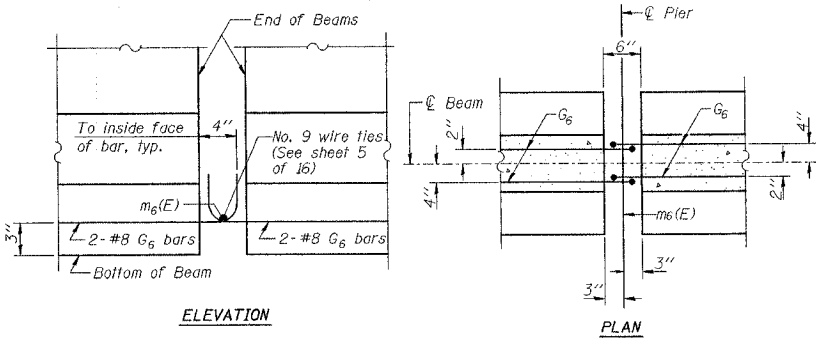
ROUTE NO.	SECTION	COUNTY	TOTAL SHEETS	SHEET NO.
SBI 88	103C-BR	BUREAU	51	19
FEDERAD DISTAN.	ILLINOIS	PROJECT	CONTRACT #64423	



***BAR LIST**

Bar	No.	Size	Length	Shape
G1	72	#5	4'-2 1/2"	TL
G2	28	#4	4'-2 1/2"	TL
G3	12	#6	3'-7"	TL
G4	6	#5	30'-9"	
G5	48	#3	2'-7"	
G6	4	#8	3'-6"	

*For one beam only.



NOTES

Inserts for 3/4" φ threaded dowel rods are to be two strut, coil type for interior I-Beams and single coil, flared loop type for exterior I-Beams. Prestressing steel shall be uncoated high strength, low relaxation 7-wire strand, Grade 270.

The nominal diameter shall be 1/2" and the nominal cross-sectional area shall be 0.153 sq. in.

Non-prestressing steel shall conform to AASHTO designation M-31 or M-322 Grade 60.

Lifting loops shall be 2-1/2" φ-270 ksi strands, as shown. Required release strength, f'ci, shall be 5000 psi.

Reinforcement bars designated (E) shall be epoxy coated. See Sheet No. 2 for moment tables.

BILL OF MATERIAL

Item	Unit	Total
Furnishing and Erecting Precast Prestressed Concrete I-Beams, 36"	Ft.	297.5

NEW BEDFORD ROAD OVER GREEN RIVER

BEAM DETAILS - SPAN 2

REVISIONS	STATE OF ILLINOIS DEPARTMENT OF TRANSPORTATION DIVISION OF HIGHWAYS	DRAWN BY DATE R King 4/04
1	SBI 88 SPUR	CHECKED BY DATE CMV 4/04
2	SECTION 103C-BR	DATE BY DATE CWC 4/04
3	SN 006-0163	BOOK NUMBER
4	STA 29+25.34	PROJECT NO. 4858-1
5	BUREAU COUNTY	SHEET NO.
6	HOMER L. CHASTAIN & ASSOCIATES, LLP CONSULTING ENGINEERS 184-001397	