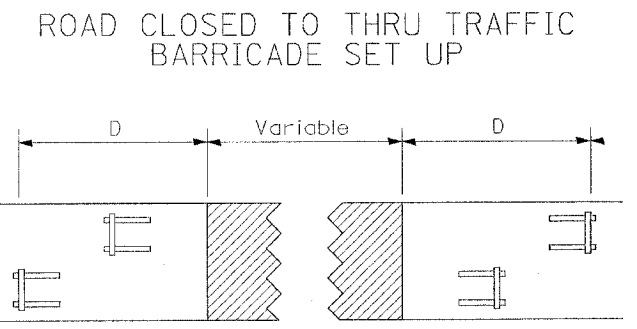
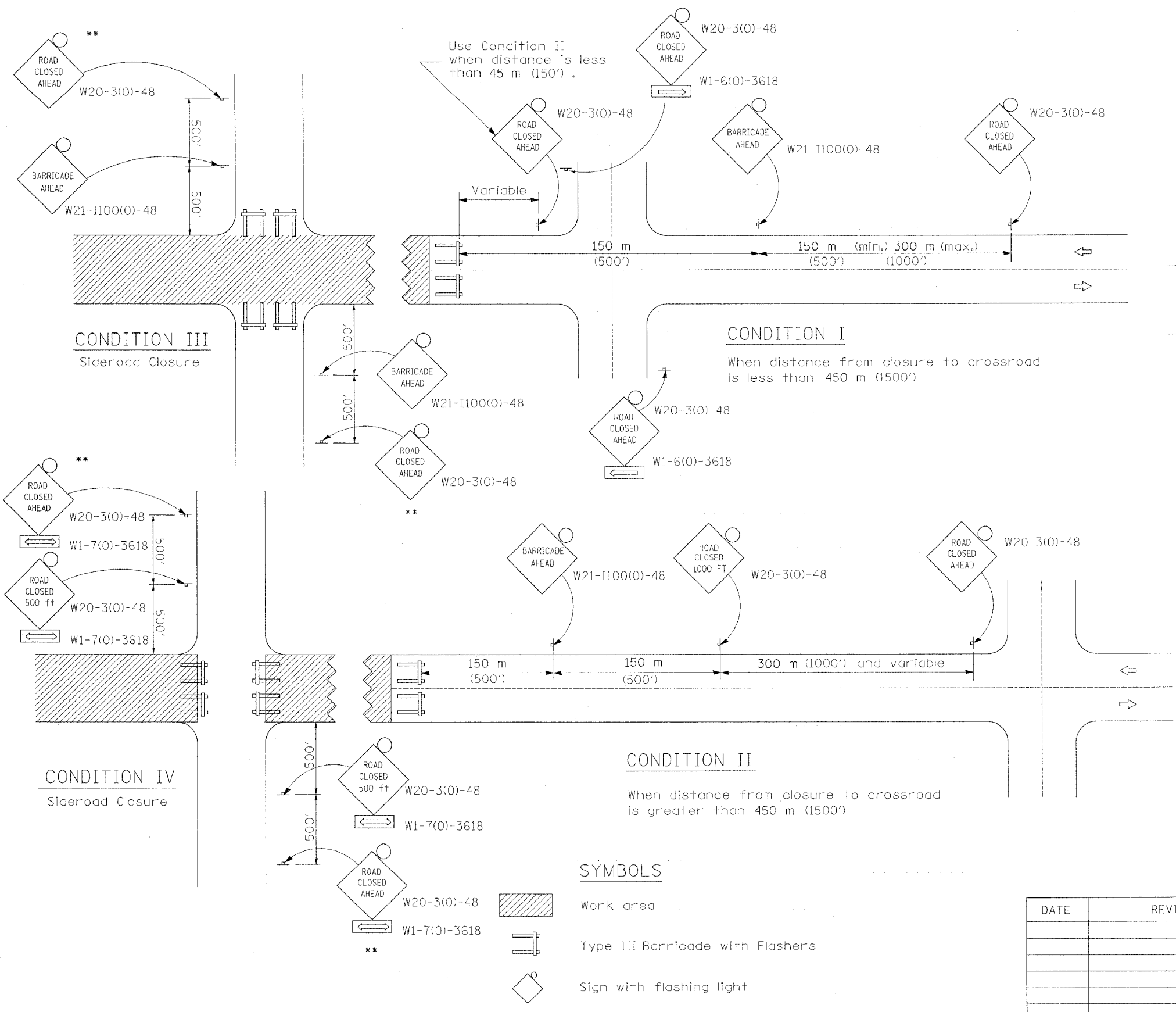


F.A. RTE.	SECTION	COUNTY	TOTAL SHEETS	SHEET NO.
88	103C-BR	BUREAU	51	32
STA. 19+00		TO STA. 39+00		
FED. ROAD DIST. NO.	ILLINOIS		FED. AID PROJECT	



Type III Barricades and R11-4-4830 signs shall be as shown in "Road Closed To All Thru Traffic" detail on Highway Standard 702001. If the distance "D" exceeds 600 m (2000') an additional set of barricades and R11-4-4830 shall be placed at each end of the work area.

**GENERAL NOTES**

- \*\* Where local access is to be maintained, barricades are to be set up as shown above in Road Closed to thru traffic.
- Type III Barricades and R11-2-4830 signs shall be as shown in "Road Closed To All Traffic" detail on Highway Standard 702001.
- Longitudinal dimensions may be adjusted to fit field conditions.
- When the distance between the barricade and the intersection is between 450 m (1500') and 600 m (2000'), the advance sign shall be placed at the intersection. When the distance between the barricade and the intersection is over 600 m (2000'), an additional sign shall be placed at the intersection. The additional sign shall give the distance to the barricade in miles or fractions of a mile.
- All dimensions are in millimeters (inches) unless otherwise shown.

DATE	REVISIONS

TYPICAL APPLICATION OF TRAFFIC CONTROL DEVICES FOR ROAD CLOSURE

**TRAFFIC CONTROL FOR ROAD CLOSURE**