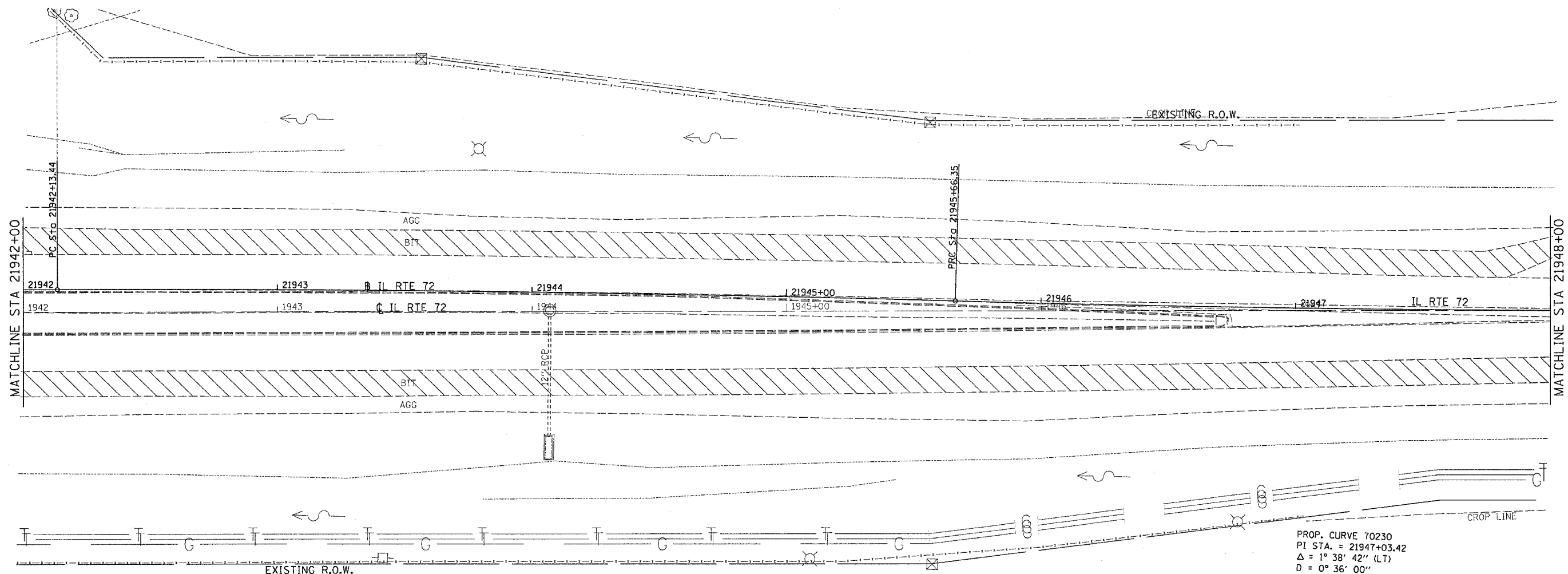


F.A.P. RTE.	SECTION	COUNTY	TOTAL SHEETS	SHEET NO.
553	120RS-3	OGLE	145	48
STA.		TO STA.		
FED. ROAD DIST. NO.		ILLINOIS FED. AID PROJECT		



PROP. CURVE 70230
 P.I. STA. = 21947+03.42
 $\Delta = 1^\circ 38' 42''$ (LT)
 $D = 0^\circ 36' 00''$
 $R = 9,548.23'$
 $T = 137.07'$
 $L = 274.12'$
 $E = 0.98'$
 $e =$
 $T.R. =$
 $S.E. RUN =$
 $P.C. STA = 21945+66.35$
 $P.T. STA = 21948+40.47$

PLOT DATE = Nov 14, 2007 2:05 PM
 FILE NAME = c:\pwworkspace\21942\21942.dgn
 PLOT SCALE = 20.0000 / 1 in.