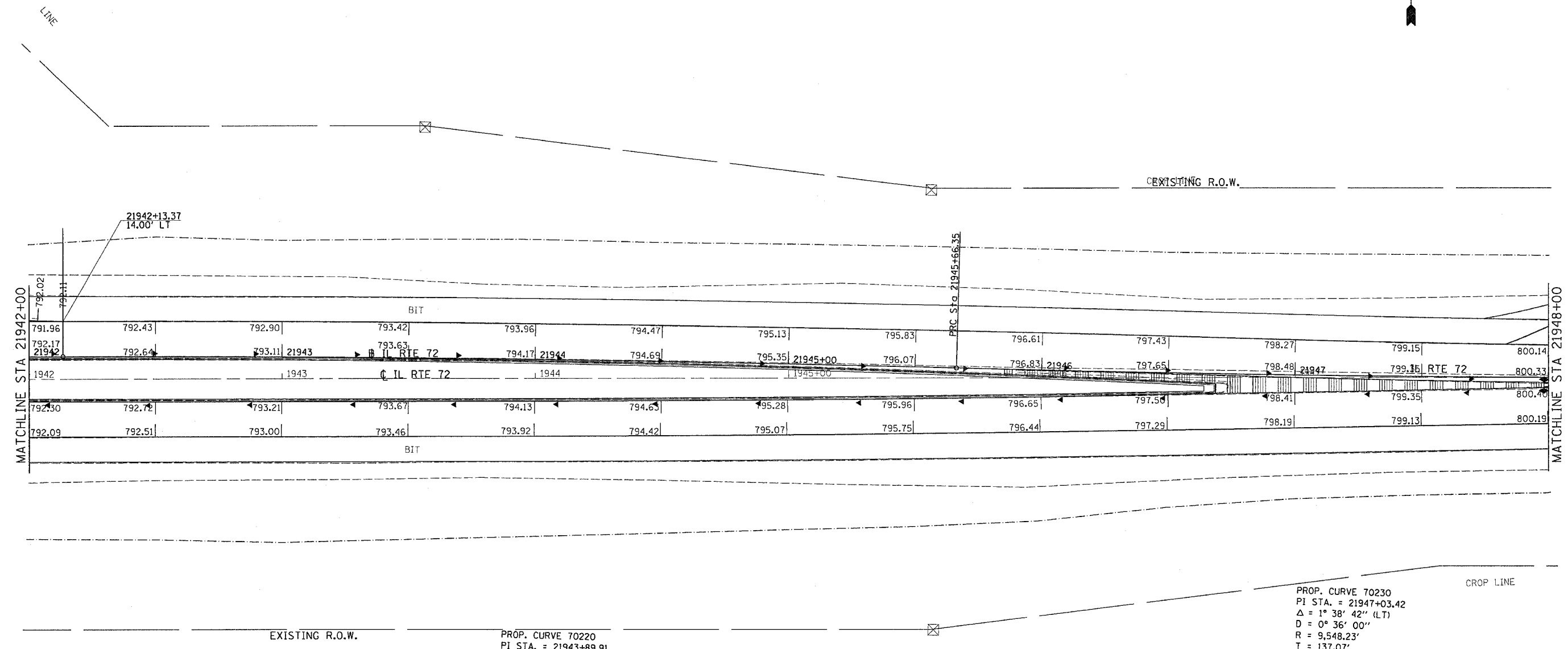


F.A.P. RTE.	SECTION	COUNTY	TOTAL SHEETS	SHEET NO.
553	120RS-3	OGLE	145	84
STA.		TO STA.		
FED. ROAD DIST. NO.		ILLINOIS	FED. AID PROJECT	

ELEVATION DETAILS



PROP. CURVE 70220
 PI STA. = 21943+89.91
 Δ = 1° 38' 42" (RT)
 D = 0° 27' 58"
 R = 12,292.70'
 T = 176.47'
 L = 352.91'
 E = 1.27'
 e = -----
 T.R. = -----
 S.E. RUN = -----
 P.C. STA = 21942+13.44
 P.T. STA = 21945+66.35

PROP. CURVE 70230
 PI STA. = 21947+03.42
 Δ = 1° 38' 42" (LT)
 D = 0° 36' 00"
 R = 9,548.23'
 T = 137.07'
 L = 274.12'
 E = 0.98'
 e = -----
 T.R. = -----
 S.E. RUN = -----
 P.C. STA = 21945+66.35
 P.T. STA = 21948+40.47

PLOT DATE = Mon, Mar 28 14:58:13 2005
 FILE NAME = c:\p-c\mets\p21628\p1628001.dgn
 PLOT SCALE = 20.0000 / IN.