

F.A.I. RTE.	SECTION	COUNTY	TOTAL SHEETS	SHEET NO.
39	201-1B-M-2	WINNEBAGO	13	1

STATE OF ILLINOIS

DEPARTMENT OF TRANSPORTATION

DIVISION OF HIGHWAYS

PROPOSED HIGHWAY PLANS

D-92-047-05



INDEX OF SHEETS

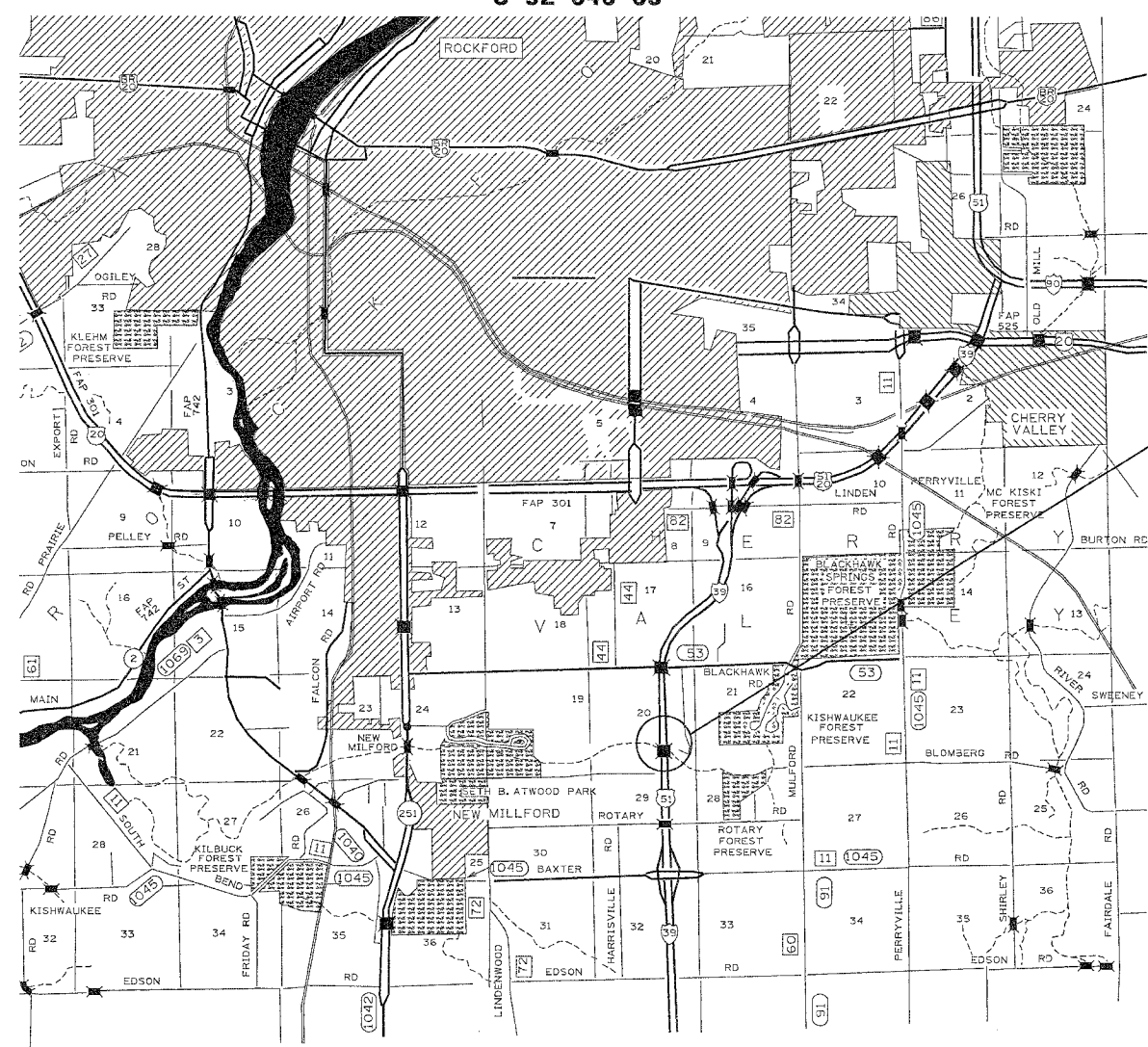
1. Cover Sheet, Index of Sheets
2. General Notes, Summary of Quantities
- 3.-6. Traffic Control Plan
7. -13. Bridge Repair Plans

STANDARDS

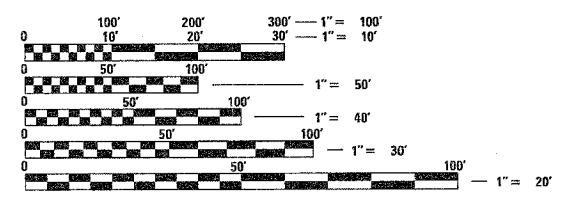
- 701400-02
- 701406-04
- 701416-05
- 702001-05
- 704001-02
- 780001-01

FAI ROUTE 39 (I-39) SECTION 201-1B-M-2 WINNEBAGO COUNTY

C-92-046-05



Project Location
Structure Number 101-0033 (SB)



FULL SIZE PLANS HAVE BEEN PREPARED USING STANDARD ENGINEERING SCALES. REDUCED SIZED PLANS WILL NOT CONFORM TO STANDARD SCALES. IN MAKING MEASUREMENTS ON REDUCED PLANS, THE ABOVE SCALES MAY BE USED.

J.U.L.I.E.
JOINT UTILITY LOCATION INFORMATION FOR EXCAVATION
1-800-892-0123

CONTRACT NO. 64A86

STATE OF ILLINOIS
DEPARTMENT OF TRANSPORTATION
DIVISION OF HIGHWAYS

SUBMITTED Jan 1 2005

Gregory L. Moore
REGIONAL DISTRICT ENGINEER

March 25 2005
Mike Hye
ENGINEER OF DESIGN AND ENVIRONMENT

March 25 2005
Victor Modesto
DIRECTOR, DIVISION OF HIGHWAYS

PRINTED BY THE AUTHORITY
OF THE STATE OF ILLINOIS