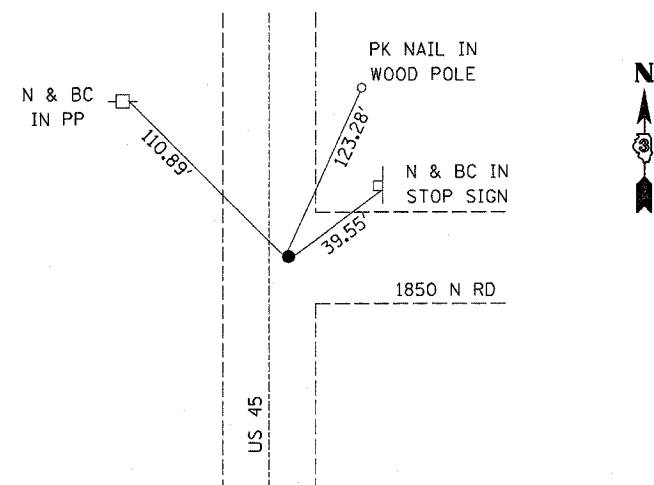


F.A.S. RTE.	SECTION	COUNTY	TOTAL SHEETS	SHEET NO.
317	(36,37) RS-2	IROQUOIS	13	8
STA. _____		TO STA. _____		
FED. ROAD DIST. NO. _____		ILLINOIS FED. AID PROJECT _____		

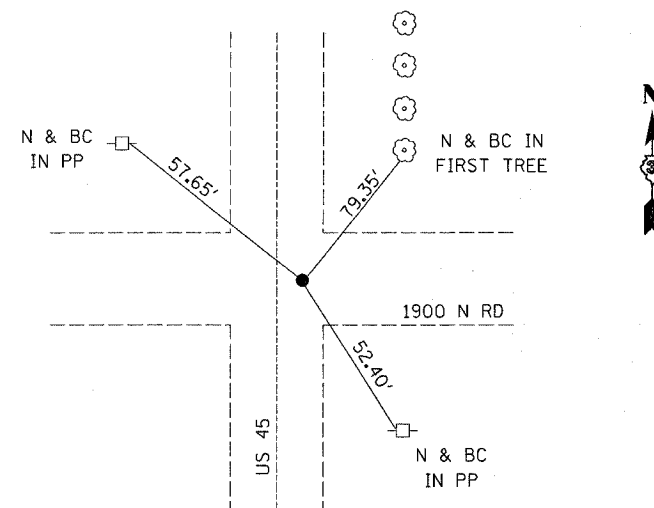
CONTRACT #66338



FOUND BRASS DISK ±2.1' EAST OF ϕ US 45

WEST 1/4 SEC. 32, T. 26 N., R. 14 W

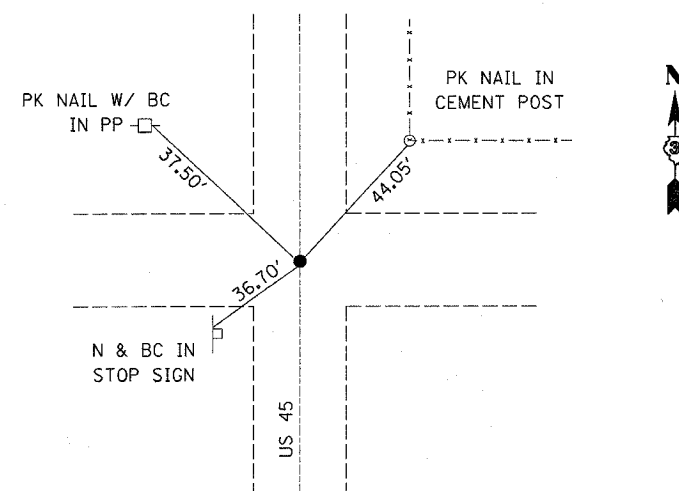
PERMANENT SURVEY MARKER



FOUND BRASS DISK ±1.6' EAST OF ϕ US 45

N.W. CORNER SEC. 32, T. 26 N., R. 14 W

PERMANENT SURVEY MARKER



FOUND PK NAIL ϕ US 45

S.W. CORNER SEC. 17, T. 27 N., R. 14 W, 2nd P.M.

PERMANENT SURVEY MARKER

3/18/2005 c:\projects\ed02603\detail1.s.dgn

TIE POINTS