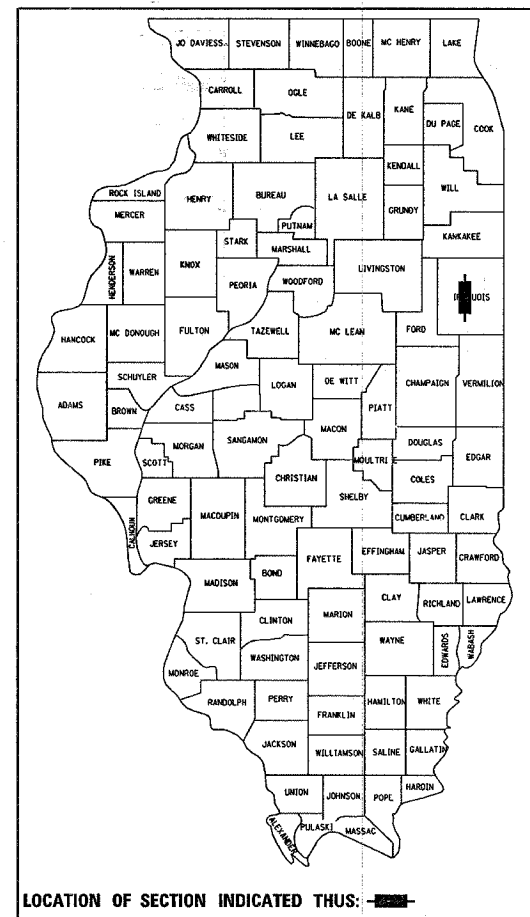


F.A.S. RTE.	SECTION	COUNTY	TOTAL SHEETS	SHEET NO.
317	(36,37)RS-2	IROQUOIS	13	1
F.A.S. REG. 5		ILLINOIS PROJECT		

CONTRACT #66338

D-93-026-03



LOCATION OF SECTION INDICATED THUS:

DESIGN DESIGNATION
RURAL MAJOR COLLECTOR

ADT (2003) = 2200
P.C. = 89.2% S.U. = 9.3% M.U. = 1.5%

STATE OF ILLINOIS
DEPARTMENT OF TRANSPORTATION
DIVISION OF HIGHWAYS

SUBMITTED 3/30 2005

Gregory Z. Morin
DEPUTY DIRECTOR OF HIGHWAYS, REGION ENGINEER

May 13 2005
Mike Wene
ENGINEER OF DESIGN AND ENVIRONMENT

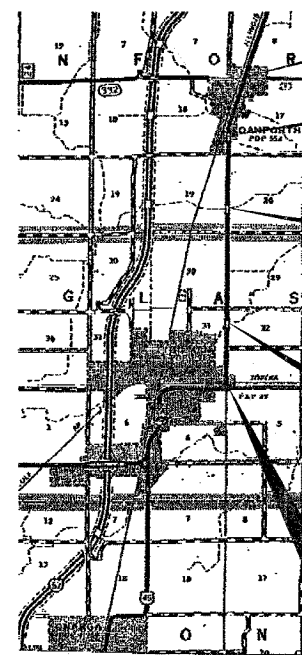
May 13 2005
Victor Maden
DIRECTOR OF HIGHWAYS, CHIEF ENGINEER

PRINTED BY THE AUTHORITY
OF THE STATE OF ILLINOIS

STATE OF ILLINOIS
DEPARTMENT OF TRANSPORTATION
DIVISION OF HIGHWAYS
**PLANS FOR PROPOSED
FEDERAL AID HIGHWAY**
F.A.S. 317 (US 45)
SECTION (36,37) RS-2

IROQUOIS COUNTY

C-93-085-03
SMART MILLING AND RESURFACING US 45
FROM NORTH ST IN DANFORTH TO US 24 IN GILMAN



LOCATION MAP
N.T.S.

BEGIN IMPROVEMENT
STA. 1080 + 27

BRIDGE OMISSION S.N. 038-0038
STA. 1120 + 04 TO 1120 + 30

BRIDGE OMISSION SN 038-0039
1173 + 06 TO 1173 + 54

S.N. 038-0040
STA. 1250 + 85

END IMPROVEMENT
STA. 1294 + 19

GROSS LENGTH OF IMPROVEMENT = 21,392 FT. = 4.052 MI.
NET LENGTH OF IMPROVEMENT = 21,318 FT. = 4.038 MI.

INDEX OF SHEETS

- 1 COVER SHEET
- 2 GENERAL NOTES
- 3 SUMMARY OF QUANTITIES
- 4 TYPICAL SECTIONS
- 5-7 SCHEDULES
- 8 TIE POINTS
- 9 REFERENCE MAP
- 10-13 DETAILS

STANDARDS

- 000001-04 STANDARD SYMBOLS, ABBREVIATIONS AND PATTERNS
- 001006 DECIMAL OF AN INCH AND OF A FOOT
- 406201 MAILBOX TURNOUT
- 635011-01 REFLECTOR MARKER AND MOUNTING DETAILS
- 667101 PERMANENT SURVEY MARKERS
- 701106-01 OFF-ROAD OPERATIONS, MULTILANE, MORE THAN 4.5 m (15') AWAY
- 701301-02 LANE CLOSURE, 2L, 2W, SHORT TIME OPERATIONS
- 701306-01 LANE CLOSURE, 2L, 2W, SLOW MOVING OPERATIONS DAY ONLY, FOR SPEEDS ≥ 45 MPH
- 701311-02 LANE CLOSURE, 2L, 2W, MOVING OPERATIONS - DAY ONLY
- 702001-05 TRAFFIC CONTROL DEVICES
- 780001-01 TYPICAL PAVEMENT MARKINGS
- 781001-02 TYPICAL APPLICATIONS RAISED REFLECTIVE PAVEMENT MARKERS

MICROFILMED _____
REEL NUMBER _____
AWARDED _____
RESIDENT ENGINEER _____
AS BUILT CHANGES WERE MADE
ON THE FOLLOWING SHEETS _____

JULIE 1-800-892-0123

DISTRICT 3 NO. (815) 434-6131

PROJECT ENGINEER: DAN DRAPER
UNIT CHIEF: TRICIA ROBINSON
TOWNSHIP: DANFORTH & DOUGLAS

CONTRACT NO. 66338

3/18/2005 c:\projects\ed02603\detail\ls.dgn

GENERAL NOTES

THE THICKNESS OF BITUMINOUS MIXTURES SHOWN ON THE PLANS IS THE NOMINAL THICKNESS. DEVIATIONS FROM THE NOMINAL THICKNESS WILL BE PERMITTED WHEN SUCH DEVIATIONS OCCUR DUE TO IRREGULARITIES IN THE EXISTING SURFACE OR BASE ON WHICH THE BITUMINOUS MIXTURE IS PLACED.

THE BITUMINOUS SURFACE OF ALL MAILBOX TURNOUTS, PRIVATE ENTRANCES, COMMERCIAL ENTRANCES, AND SIDE ROADS SHALL BE MADE NEATLY, IN A WORKMANLIKE MANNER, AND SHALL ACCURATELY CONFORM TO THE SHAPES AND DIMENSIONS SHOWN ON THE PLAN DETAILS. IF REQUIRED BY THE ENGINEER, THE CONTRACTOR SHALL BE REQUIRED TO SAW CUT THE BITUMINOUS SURFACE TO CONFORM TO THE SHAPES AND DIMENSIONS SHOWN ON THE PLAN DETAILS. THIS WORK SHALL BE INCLUDED IN THE COST OF THE BITUMINOUS SURFACE

AGGREGATE (PRIME COAT): FA 20 MAY BE USED IN ADDITION TO THE GRADATIONS LISTED IN THE 3RD PARAGRAPH OF ARTICLE 1003.03(c) OF THE STANDARD SPECIFICATIONS.

THE ENGINEER WILL BE THE SOLE JUDGE CONCERNING CURING TIME FOR THE VARIOUS BITUMINOUS LIFTS.

WHERE SECTION OR SUBSECTION MONUMENTS ARE ENCOUNTERED, THE ENGINEER SHALL BE NOTIFIED BEFORE SUCH MONUMENTS ARE REMOVED. THE CONTRACTOR SHALL PROTECT AND CAREFULLY PRESERVE ALL MONUMENTS UNTIL AN AUTHORIZED SURVEYOR OR AGENT HAS WITNESSED OR OTHERWISE REFERENCED THEIR LOCATION. THE CONTRACTOR SHALL BE RESPONSIBLE FOR HAVING AN AUTHORIZED SURVEYOR REESTABLISH ANY SECTION OR SUBSECTION MONUMENTS DESTROYED BY HIS OPERATIONS.

SEEDING SHALL NOT BE PERMITTED AT ANY TIME WHEN THE GROUND IS FROZEN, WET, OR IN AN UNTILLABLE CONDITION. LOCATIONS TO BE SEEDED WILL BE DETERMINED BY THE ENGINEER.

THE FINISHED EARTHWORK SHALL HAVE A VEGETATION SUSTAINING SOIL COVERING THE TOP 100 MILLIMETERS IN AREAS TO BE SEEDED OR SODDED. THE VEGETATION SUSTAINING SOIL REQUIRED WILL NOT BE PAID FOR SEPARATELY BUT SHALL BE INCLUDED IN THE COST OF EMBANKMENT.

ON EXISTING PAVEMENT WHICH MAY BE SUPERELEVATED, THE NEW BITUMINOUS PAVEMENT SHALL BE BUILT WITH THE SAME SUPERELEVATION UNLESS NEW SUPERELEVATION RATES ARE GIVEN ON THE PLANS.

ANY REFERENCE TO A STANDARD IN THESE PLANS SHALL BE INTERPRETED TO MEAN THE EDITION AS INDICATED BY THE SUBNUMBER LISTED ON THE INDEX OF SHEETS OR THE COPY OF THE STANDARD INCLUDED IN THESE PLANS.

THE FOLLOWING RATES OF APPLICATION HAVE BEEN USED IN CALCULATING PLAN QUANTITIES:

GRANULAR MATERIALS	2.05	TONS / CU YD
BITUMINOUS MAT PRIME COAT	0.08	GAL / SQ YD OR
	0.375	GAL / SQ YD
AGGREGATE PRIME COAT	0.002	TONS / SQ YD
BITUMINOUS RESURFACING	112	LBS / SQ YD / IN
SHORT TERM PAVEMENT MARKING	10	FT /100 FT OF APPLICATION
MIX FOR CRACKS, JTS & FLGWY	0.0003	TONS / SQ YD
LEVEL BINDER (HAND METHOD)	0.0005	TONS / SQ YD
SUPPLEMENTAL WATERING	3	GAL / SQ YD / APPLICATION
CALCIUM CHLORIDE	2	LB / SQ YD / APPLICATION
TEMPORARY DITCH CHECKS	9	BALES OR
	5	TONS AGGREGATE

THE EXISTING SHOULDERS ARE LOW. IN THE EVENT THAT CONSTRUCTION OPERATIONS RESULT IN A DROP OFF GREATER THAN 3" BETWEEN THE EDGE OF PAVEMENT OR EDGE OF SHOULDER WITHIN 3' OF THE EDGE OF PAVEMENT AND THE EARTH OR AGGREGATE SHOULDERS, THEN THE DROP OFF SHALL BE PROTECTED ACCORDING TO ARTICLE 701.04(B)(1) OF THE STANDARD SPECIFICATIONS. THIS WORK WILL BE CONSIDERED AS INCLUDED IN THE CONTRACT UNIT PRICES FOR TRAFFIC CONTROL.

THE CONTRACTOR SHALL CONTACT JULIE AT LEAST 48 HOURS PRIOR TO EXCAVATION TO DETERMINE WHICH UTILITIES ARE IN THE AREA.

STATE OF ILLINOIS
DEPARTMENT OF TRANSPORTATION
DISTRICT THREE

PREPARED BY: Thomas A. Smith
DISTRICT STUDIES & PLANS ENGINEER

DATE: 03/30/2005

EXAMINED BY: Harold J. Jones
DISTRICT CONSTRUCTION ENGINEER

Kenneth T. Taylor
DISTRICT MATERIALS ENGINEER

Bruce A. Huersten
DISTRICT OPERATIONS ENGINEER

F.A.S. RTE.	SECTION	COUNTY	TOTAL SHEETS	SHEET NO.
317	(36,37)RS-2	IRROQUOIS	13	3
STA.	TO STA.			
FED. ROAD DIST. NO.	ILLINOIS	FED. AID PROJECT		

CONTRACT #66338

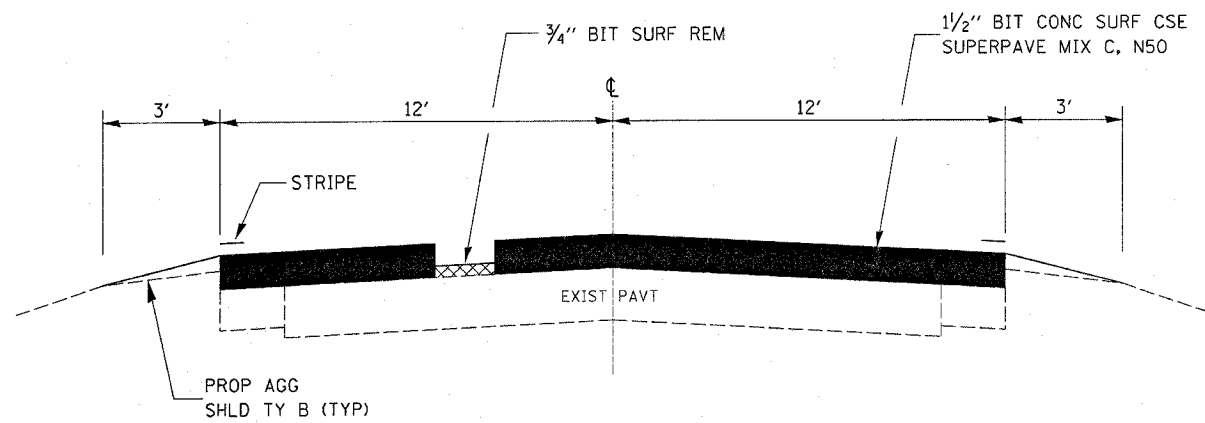
SUMMARY OF QUANTITIES					
CODE NO	ITEM	Unit	Total	I000 RDWY	SFTY-2A 038-0040
20400800	FURNISHED EXCAVATION	CU YD	6	6	
25000200	SEEDING CLASS 2	ACRE	0.14	0.14	
25000400	NITROGEN FERTILIZER	LB	13	13	
25000500	PHOSPHORUS FERTILIZER	LB	13	13	
25000600	POTASSIUM FERTILIZER	LB	13	13	
25100630	EROSION CONTROL BLANKET	SQ YD	587	587	
40200800	AGGREGATE SURFACE COURSE TYPE B	TON	13	13	
40600100	BITUMINOUS MATERIAL PRIME COAT	GAL	4869	4869	
40600300	AGGREGATE PRIME COAT	TON	122	122	
40600400	MIXTURE FOR CRACKS AND FLANGEWAYS	TON	17	17	
40600895	CONSTRUCTING TEST STRIP	EACH	1	1	
40600980	BITUMINOUS SURFACE REMOVAL BUTT JOINT	SQ YD	963	963	
40600990	TEMPORARY RAMP	SQ YD	437	437	
40800040	INCIDENTAL BITUMINOUS SURFACING	TON	334	334	
44000003	BITUMINOUS SURFACE REMOVAL 3/4"	SQ YD	59583	59583	
44000005	BITUMINOUS SURFACE REMOVAL 1 1/4"	SQ YD	341	160	181
48101200	AGGREGATE SHOULDER TYPE B	TON	1413	1413	
66700205	PERMANENT SURVEY MARKERS, TYPE I	EACH	3	3	
67100100	MOBILIZATION	L SUM	1	1	
70100460	TRAFFIC CONTROL AND PROTECTION STANDARD 701306	L SUM	1	1	
70300100	SHORT TERM PAVEMENT MARKING	FOOT	4263	4263	
70300220	TEMPORARY PAVEMENT MARKING - LINE 4"	FOOT	44176	44176	
70300240	TEMPORARY PAVEMENT MARKING - LINE 6"	FOOT	5329	5329	
70301000	WORK ZONE PAVEMENT MARKING REMOVAL	SQ FT	711	711	
78001110	PAINT PAVEMENT MARKING LINE 4"	FOOT	44176	44176	
78001130	PAINT PAVEMENT MARKING LINE 6"	FOOT	5329	5329	
78000100	THERMOPLASTIC PAVEMENT MARKING - LETTERS AND SYMBOLS	SQ FT	61	61	
78000400	THERMOPLASTIC PAVEMENT MARKING - LINE 6"	FOOT	168	168	
78000650	THERMOPLASTIC PAVEMENT MARKING - LINE 24"	FOOT	36	36	
78100100	RAISED REFLECTIVE PAVEMENT MARKER	EACH	267	267	
78200405	GUARD RAIL MARKERS	EACH	42	42	
78300200	RAISED REFLECTIVE PAVEMENT MARKER REMOVAL	EACH	267	267	
X4066414	BITUMINOUS CONCRETE SURFACE COURSE, SUPERPAVE. MIXTURE C N50	TON	4778	4765	13
X4066735	LEVELING BINDER (HAND METHOD), SUPERPAVE N50	TON	28	28	

•SPECIALTY ITEMS

3/31/2005 c:\pro\jects\ed02603\detail.s.dgn

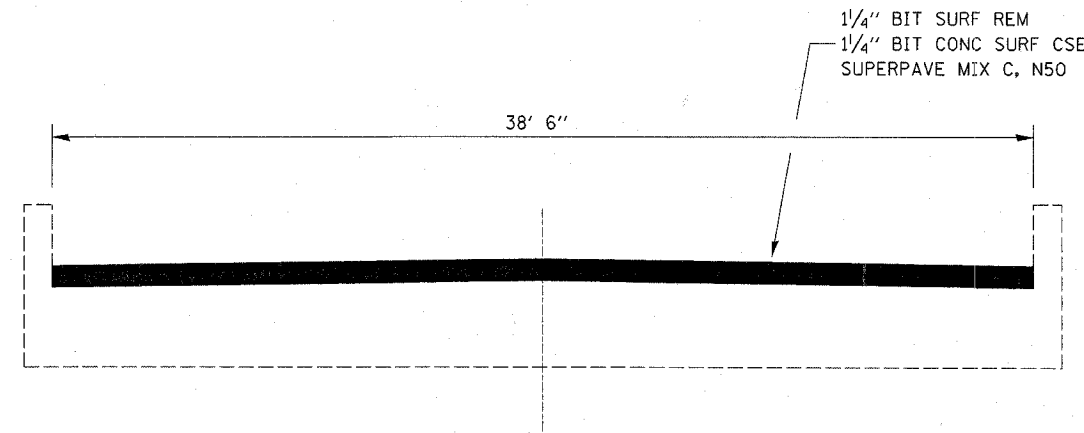
F.A.S. RTE.	SECTION	COUNTY	TOTAL SHEETS	SHEET NO.
317	(36,37) RS-2	IROQUOIS	13	4
STA.		TO STA.		
FED. ROAD DIST. NO.		ILLINOIS FED. AID PROJECT		

CONTRACT #66338



PROPOSED TYPICAL SECTION

STA. 1080+27 TO 1250+63.8
 STA. 1251+06.2 TO 1294+19



PROPOSED TYPICAL SECTION

SN. 038-0040
 STA. 1250+63.8 TO 1251+06.2

MIX DESIGN							
MIX	PG GRADE	MAX % RAP ALLOWABLE	DESIGN AIR VOIDS	MIX COMPOSITION	FRICTION AGG	PLANT CONTROL LIMITS	DENSITY CONTROL
SUPERPAVE SURFACE	PG 58-22	15%	4.0% @N50	IL 12.5 OR IL 9.5	MIXTURE "C"	CLASS I	CORRELATION
SUPERPAVE LEVEL BINDER (HM)	PG 58-22	25%	4.0% @N50	IL 9.5		CLASS I	SATISFACTION OF ENGINEER

•• IF RAP OPTION IS SELECTED, THE ASPHALT CEMENT GRADE MAY NEED TO BE ADJUSTED. THIS WILL BE DETERMINED BY THE ENGINEER

OMISSIONS
 STA 1120+04 TO 1120+30
 STA 1173+06 TO 1173+54

3/18/2005
 c:\projects\ed02603\detail\is.dgn

CONTRACT #66338

MAINLINE BITUMINOUS SCHEDULE													
LOCATION		LENGTH	WIDTH (PROP)	BIT MATERIALS	AGG	MIX FOR CRACKS, JOINTS FLANGEWAYS	LEVEL BINDER (HM) SUPERPAVE	BIT CONC SURF CSE SUPERPAVE	AGG SHLD TY B	BIT SURF REM 3/4"	BIT SURF REM 1 1/4"	BIT SURF REM BUTT JT	TEMP RAMP
				PR CT	PR CT	TON	TON	TON	TON	TON	SQ YD	SQ YD	SQ YD
1080+27 TO 1080+57		30	24	6	0.2	0.02	0.04	6.7	2			80	13.3
1080+57 TO 1119+74		3917	24	836	20.9	3.13	5.22	877.4	260.2	10445			
1119+74 TO 1120+04		30	24	6	0.2	0.02	0.04	6.7	2			80	13.3
1120+04 TO 1120+30	SN 038-0038 (OMIT)	26	34.9										
1120+30 TO 1120+60		30	24	6	0.2	0.02	0.04	6.7	2			80	13.3
1120+60 TO 1172+76		5216	24	1113	27.8	4.17	6.95	1168.4	346.5	13909			
1172+76 TO 1173+06		30	24	6	0.2	0.02	0.04	6.7	2			80	13.3
1173+06 TO 1173+54	SN 038-0039 (OMIT)	48	38										
1173+54 TO 1173+84		30	24	6	0.2	0.02	0.04	6.7	2			80	13.3
1173+84 TO 1250+33.8		7649.8	24	1632	40.8	6.12	10.2	1713.6	508.2	20399			
1250+33.8 TO 1250+63.8		30	24	6	0.2	0.02	0.04	6.7	2			80	
1250+63.8 TO 1251+06.2	SN 038-0040	42.4	38.5	15	0.4	0.05	0.09	12.7				181	
1251+06.2 TO 1251+36.2		30	24	6	0.2	0.02	0.04	6.7	2			80	
1251+36.2 TO 1293+89		4252.8	24	907	22.7	3.4	5.67	952.6	282.5	11341			
1293+89 TO 1294+19		30	24	6	0.2	0.02	0.04	6.7	2			80	13.3
TOTALS				4551	114.2	17.03	28.45	4778.3	1413.4	56094	341	480	79.8

NOTE: THE EXISTING AGGREGATE SHOULDERS ARE LOW. ADDITIONAL QUANTITY OF AGGREGATE SHOULDER, TYPE B HAS BEEN ADDED.

SEEDING SCHEDULE							
SIDEROAD	CL 2 SEEDING	NITROGEN FERTILIZER	PHOSPHORUS FERTILIZER	POTASSIUM FERTILIZER	EROSION CONTROL BLANKET	FURNISHED EXCAVATION	
	ACRE	POUND	POUND	POUND	SQ YD	CU YD	
NORTH ST. WEST	0.01	0.9	0.9	0.9	41.9	0.4	
NORTH ST. EAST	0.01	0.9	0.9	0.9	41.9	0.4	
LOCUST ST. EAST	0.01	0.9	0.9	0.9	41.9	0.4	
WASHINGTON ST. EAST	0.01	0.9	0.9	0.9	41.9	0.4	
JEFFERSON ST. WEST	0.01	0.9	0.9	0.9	41.9	0.4	
2100 N WESTBOUND	0.01	0.9	0.9	0.9	41.9	0.4	
2100 N EASTBOUND	0.01	0.9	0.9	0.9	41.9	0.4	
2000 N WESTBOUND	0.01	0.9	0.9	0.9	41.9	0.4	
2000 N EASTBOUND	0.01	0.9	0.9	0.9	41.9	0.4	
1900 N WESTBOUND	0.01	0.9	0.9	0.9	41.9	0.4	
1900 N EASTBOUND	0.01	0.9	0.9	0.9	41.9	0.4	
1850 N EASTBOUND	0.01	0.9	0.9	0.9	41.9	0.4	
E 3RD ST. WEST	0.01	0.9	0.9	0.9	41.9	0.4	
E 2ND ST. WEST	0.01	0.9	0.9	0.9	41.9	0.4	
TOTALS		0.14	12.6	12.6	12.6	586.6	5.6

OMISSIONS
 STA 1120+04 TO 1120+30
 STA 1173+06 TO 1173+54

3/31/2005
 c:\projects\ed02603\defal1.s.dgn

PAVEMENT MARKING SCHEDULE																	
STATION TO	STATION	LENGTH	PAINT PAVEMENT MARKING LINE			TEMP PAVEMENT MARKING LINE			THERMOPLASTIC PVMT MARK			SHORT-TERM PAVEMENT MARKING	WORK ZONE PAVEMENT MARKING REM	RAISED REFL PAVEMENT MARK REM	RAISED REFL PAVEMENT MARK	GUARDRAIL MARKERS	
			4 INCH		6 INCH	4 INCH		6 INCH	6 INCH	24 INCH	LETTERS & SYMBOLS						
			YELLOW	WHITE	YELLOW	WHITE	YELLOW	FOOT	FOOT	FOOT	FOOT						SQ FT
			FOOT	FOOT	FOOT	FOOT	FOOT	FOOT	FOOT	FOOT	FOOT						FOOT
1080+27	TO 1120+04	3977		7954	994		7954	994				795	133	50	50		
1120+04	TO 1120+30	OMIT															
1120+30	TO 1173+06	5276		10552	1319		10552	1319				1055	176	66	66		
1173+06	TO 1173+54	OMIT															
1173+54	TO 1294+19	12065		24130	3016		24130	3016				2413	402	151	151		
1294+19	TO 1294+19																
NO PASSING ZONE																	
S.B. 1185+08	TO 1190+38	530	530			530											
N.B. 1194+78	TO 1200+48	570	570			570											
S.B. 1289+79	TO 1294+19	440	440			440											
RAILROAD MARKING																	
NORTH ST.																	
1290+19																	
CROSSWALKS																	
LOCUST ST.																	
WASHINGTON ST.																	
WASHINGTON ST. (ACROSS 45)																	
GUARDRAIL MARKERS																	
SN 038-0038																	
SN 038-0039																	
SN 038-0040																	
SUBTOTALS			1540	42636		1540	42636										
PROJECT TOTALS				44176	5329		44176	5329	168	36	61.2	4263	711	267	267	42	

OMISSIONS
 STA 1120+04 TO 1120+30
 STA 1173+06 TO 1173+54

3/31/2005
 c:\proj\ecrs\ed02603\detail.s.dgn

CONTRACT #66338

SIDEROAD AND ENTRANCE SCHEDULE														
				LENGTH	WIDTH	WIDTH	AREA	BIT	AGG	INC	BIT SURF	BIT SURF	AGG	TEMP
				FOOT	(EOP)	(END)	SQ YD	MATLS	PR CT	BIT	REM	REM	SURF	RAMP
								PR CT		SURF	3/4"	BUTT JT	TY B	SQ YD
1081+49	LT	SR	BIT (NORTH ST. N 2200)	30	83	22.2	175.3	14.0	0.35	14.7	150.6	24.7		12.3
1081+49	RT	SR	BIT (NORTH ST. N 2200)	30	84	29	188.3	15.1	0.38	15.8	156.1	32.2		16.1
1083+82	LT	PE	AGG W/ BIT	10	25.5	14	21.9	1.8	0.04	1.8	21.9		0.4	
1085+33	LT	PE	AGG W/ BIT	10	35	24.3	32.9	2.6	0.07	2.8	32.9		0.8	
1087+16	LT	SR	A3 (LOCUST ST.)	30	63	29	153.3	12.3	0.31	12.9	121.1	32.2		16.1
1089+49	LT	PE	BIT	10	29	12.6	23.1	1.8	0.05	1.9	20.3	2.8		4.2
1089+82	LT	PE	BIT	10	27	11.8	21.6	1.7	0.04	1.8	19.0	2.6		3.9
1090+77	LT	PE	BIT	10	34.6	18.5	29.5	2.4	0.06	2.5	25.4	4.1		6.2
1092+35	LT	PE	BIT	10	41	24.5	36.4	2.9	0.07	3.1	31.0	5.4		8.2
1093+99	LT	SR	A3 (WASHINGTON ST.)	30	58	18	126.7	10.1	0.25	10.6	106.7	20.0		10.0
1095+76	LT	PE	BIT	10	36	15	28.3	2.3	0.06	2.4	25.0	3.3		5.0
1096+84	LT	PE	BIT	10	34	13	26.1	2.1	0.05	2.2	23.2	2.9		4.3
1098+12	LT	CE	AGG W/ BIT	10	60	37	53.9	4.3	0.11	4.5	53.9		1.2	
1099+73	LT	PE	BIT	10	26	18	24.4	2.0	0.05	2.1	20.4	4.0		6.0
1101+11	LT	PE	BIT	10	26.5	12	21.4	1.7	0.04	1.8	18.7	2.7		4.0
1102+26	LT	PE	BIT	10	25	12	20.6	1.6	0.04	1.7	17.9	2.7		4.0
1102+49	RT	SR	BIT (JEFFERSON ST.)	30	105	41.4	244.0	19.5	0.49	20.5	198.0	46.0		23.0
1102+81	LT	ALLEY	BIT	30	56	24	133.3	10.7	0.27	11.2	128.0	5.3		8.0
1103+47	LT	CE	AGG W/ BIT	10	61	45.6	59.2	4.7	0.12	5.0	59.2		1.4	
1104+52	LT	PE	BIT	10	31	15	25.6	2.0	0.05	2.1	22.3	3.3		5.0
1105+41	LT	PE	BIT	10	32	15	26.1	2.1	0.05	2.2	22.8	3.3		5.0
1108+95	LT	PE	BIT	10	38	17	30.6	2.4	0.06	2.6	26.8	3.8		5.7
1110+07	LT	PE	BIT	10	30	14.7	24.8	2.0	0.05	2.1	21.5	3.3		4.9
1112+13	LT	CE	BIT	10	76	51	70.6	5.6	0.14	5.9	59.3	11.3		17.0
1116+36	RT	PE	BIT	10	27.5	14	23.1	1.8	0.05	1.9	20.0	3.1		4.7
1116+79	RT	PE	BIT	10	24	16	22.2	1.8	0.04	1.9	18.6	3.6		5.3
1117+25	RT	MB	BIT	6	32	32	21.3	1.7	0.04	1.8	21.3			
1117+55	LT	PE	AGG W/ BIT	10	47	22	38.3	3.1	0.08	3.2	38.3		0.7	
1119+00	RT	MB	BIT	7	49	49	38.1	3.0	0.08	3.2	38.1			
1119+22	RT	PE	BIT	10	34.6	18.6	29.6	2.4	0.06	2.5	25.5	4.1		6.2
1122+50	RT	MB	BIT	7	35.5	35.5	27.6	2.2	0.06	2.3	27.6			
1122+83	RT	PE	AGG W/ BIT	10	28	16.5	24.7	2.0	0.05	2.1	24.7		0.5	
1123+91	LT	PE	AGG W/ BIT	10	42	17	32.8	2.6	0.07	2.8	32.8		0.5	
1135+66	RT	SR	A3 (N 2100)	30	57.5	19	127.5	10.2	0.26	10.7	106.4	21.1		10.6
1135+66	LT	SR	A3 (N 2100)	30	72	17.5	149.2	11.9	0.30	12.5	129.8	19.4		9.7
1142+40	RT	MB	BIT	8	34.5	34.5	30.7	2.5	0.06	2.6	30.7			
1142+74	RT	PE	AGG W/ BIT	10	33	18	28.3	2.3	0.06	2.4	28.3		0.6	
1156+75	LT	PE	AGG W/ BIT	10	34	20	30.0	2.4	0.06	2.5	30.0		0.6	
1179+26	LT	MB	BIT	7	49.5	49.5	38.5	3.1	0.08	3.2	38.5			
1189+10	RT	SR	A3 (N 2000)	30	52	16	113.3	9.1	0.23	9.5	95.5	17.8		8.9
1189+10	LT	SR	A3 (N 2000)	30	76	20	160.0	12.8	0.32	13.4	137.8	22.2		11.1
1239+43	LT	PE	AGG W/ BIT	10	46	20.2	36.8	2.9	0.07	3.1	36.8		0.6	
1242+38	RT	SR	BIT (N 1900)	30	71.5	24	159.2	12.7	0.32	13.4	132.5	26.7		13.3
1242+38	LT	SR	BIT (N 1900)	30	93	24.6	196.0	15.7	0.39	16.5	168.7	27.3		13.7
1269+05	LT	SR	BIT (N 1850)	30	87	20.5	179.2	14.3	0.36	15.1	156.4	22.8		11.4
1281+88	RT	SR	A3 (E 3RD ST.)	30	67	23	150.0	12.0	0.30	12.6	124.4	25.6		12.8
1282+11	LT	MB	BIT	6	33	33	22.0	1.8	0.04	1.8	22.0			
1282+47	LT	PE	AGG W/ BIT	10	45.7	29.5	41.8	3.3	0.08	3.5	41.8		0.9	
1289+40	RT	SR	A3 (E 2ND ST.)	30	69	26.5	159.2	12.7	0.32	13.4	129.8	29.4		14.7
1289+79	RT	CE	AGG W/ BIT	10	42.5	25.5	37.8	3.0	0.08	3.2	37.8		0.8	
1290+00	LT	MB	BIT	7	35	35	27.2	2.2	0.05	2.3	27.2			
1290+45	RT	CE	AGG W/ BIT	10	63.8	42	58.8	4.7	0.12	4.9	58.8		1.3	
1290+58	LT	CE	BIT	10	43.5	25	38.1	3.0	0.08	3.2	32.5	5.6		8.3
1291+56	LT	CE	BIT	10	39	24.6	35.3	2.8	0.07	3.0	29.8	5.5		8.2
1291+99	RT	CE	BIT	10	74	54	71.1	5.7	0.14	6.0	59.1	12.0		18.0
1291+99	LT	CE	AGG W/ BIT	10	48	39	48.3	3.9	0.10	4.1	48.3		1.2	
1293+17	RT	CE	BIT	10	67	48	63.9	5.1	0.13	5.4	53.2	10.7		16.0
1293+82	RT	CE	BIT	10	59	47	58.9	4.7	0.12	4.9	48.5	10.4		15.7
1293+82	LT	CE	AGG W/ BIT	10	60.5	40	55.8	4.5	0.11	4.7	55.8		1.3	
								317.6	7.98	333.8	3489.3	483.3	12.8	357.4

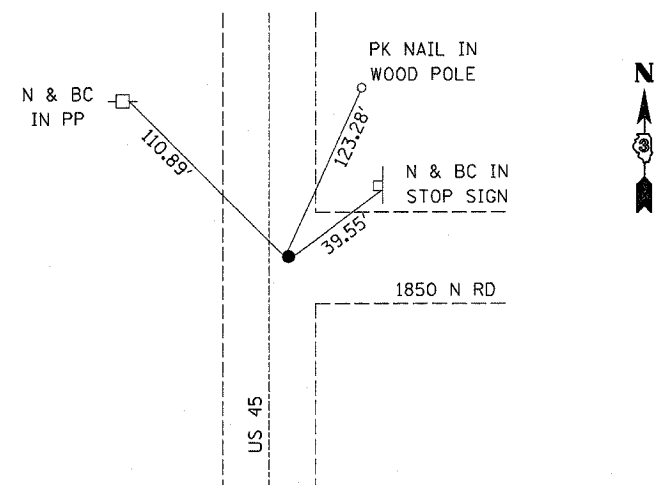
3/31/2005 c:\projects\ed02603\detail.s.dgn

OMISSIONS
STA 1120+04 TO 1120+30
STA 1173+06 TO 1173+54

SCHEDULES

F.A.S. RTE.	SECTION	COUNTY	TOTAL SHEETS	SHEET NO.
317	(36,37) RS-2	IROQUOIS	13	8
STA. _____		TO STA. _____		
FED. ROAD DIST. NO. _____		ILLINOIS FED. AID PROJECT _____		

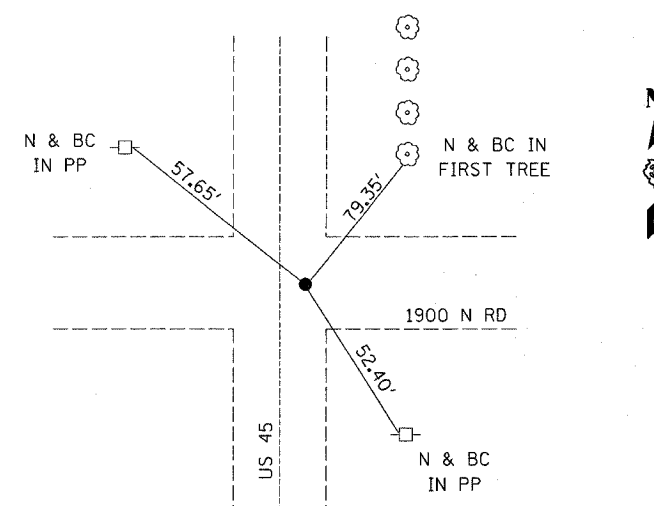
CONTRACT #66338



FOUND BRASS DISK ±2.1' EAST OF ϕ US 45

WEST 1/4 SEC. 32, T. 26 N., R. 14 W

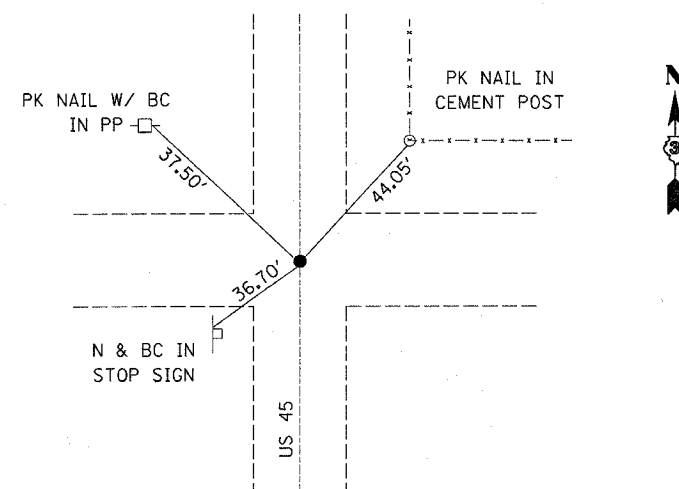
PERMANENT SURVEY MARKER



FOUND BRASS DISK ±1.6' EAST OF ϕ US 45

N.W. CORNER SEC. 32, T. 26 N., R. 14 W

PERMANENT SURVEY MARKER



FOUND PK NAIL ϕ US 45

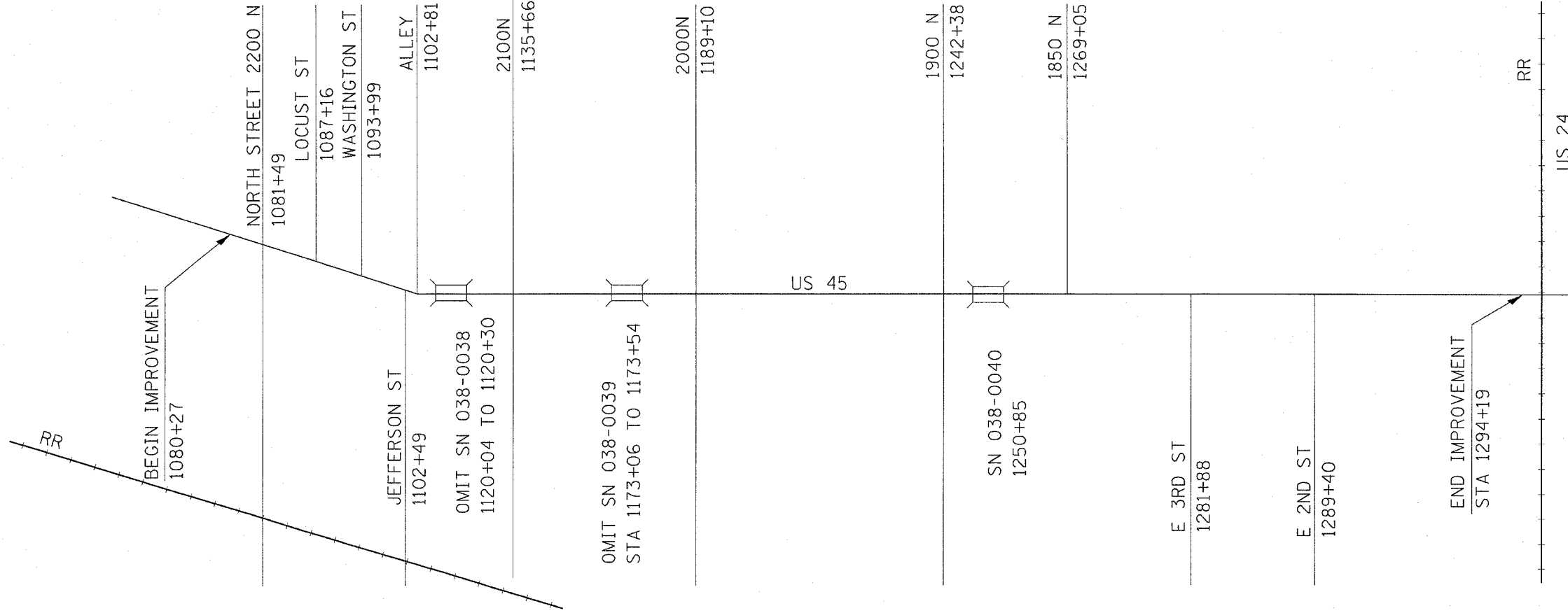
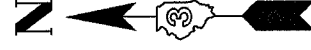
S.W. CORNER SEC. 17, T. 27 N., R. 14 W, 2nd P.M.

PERMANENT SURVEY MARKER

3/18/2005 c:\projects\ed02603\detail1.s.dgn

TIE POINTS

3/18/2005
c:\projects\ed02603\detail\is.dgn



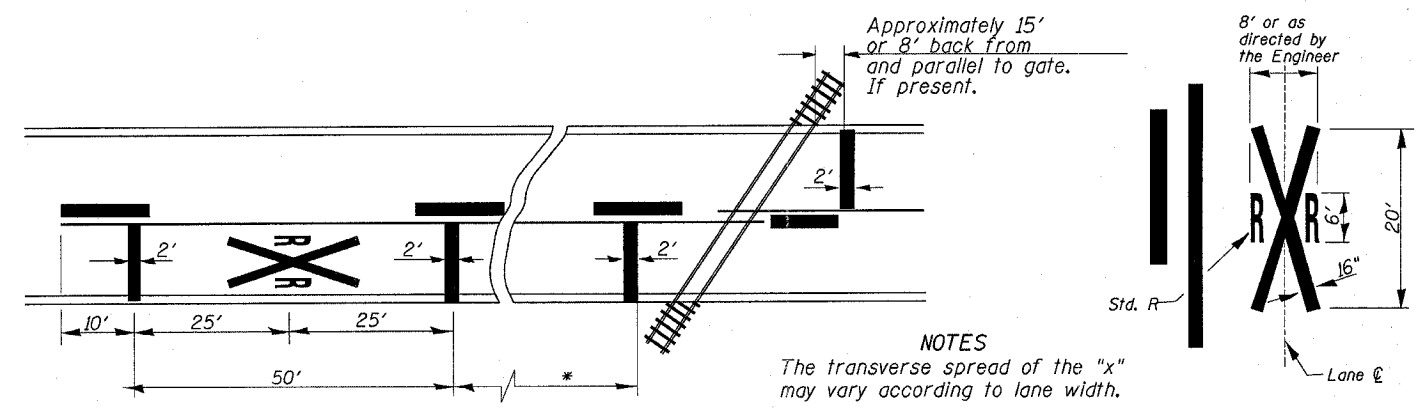
F.A.S. RTE.	SECTION	COUNTY	TOTAL SHEETS	SHEET NO.
317	(36,37) RS-2	IROQUOIS	13	9
STA. _____		TO STA. _____		
FED. ROAD DIST. NO. _____		ILLINOIS FED. AID PROJECT		

CONTRACT #66338

REFERENCE MAP

F.A.S. RTE.	SECTION	COUNTY	TOTAL SHEETS	SHEET NO.
317	(36,37) RS-2	IROQUOIS	13	10
STA. _____		TO STA. _____		
FED. ROAD DIST. NO. _____		ILLINOIS FED. AID PROJECT		

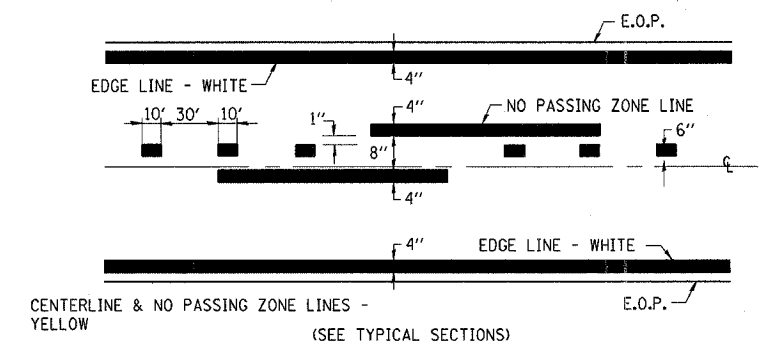
CONTRACT #66338



* Minimum Distance
 400' for 55 MPH
 250' for 45 MPH
 100' for 35 MPH or Less

NOTES
 The transverse spread of the "x" may vary according to lane width.
 On multi-lane roads, the stop lines shall extend across all approach lanes and separate RXR symbols shall be placed adjacent to each other in each lane.

PAVEMENT MARKINGS AT RAILROAD-HIGHWAY GRADE CROSSING

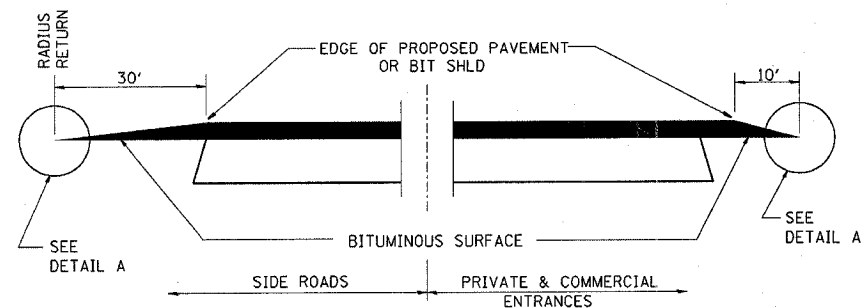


PAVEMENT MARKING

3/31/2005 c:\projects\ed02603\detail1.s.dgn

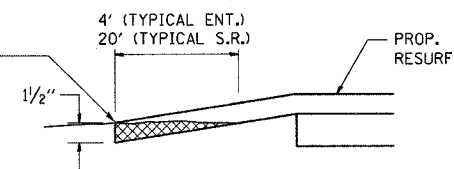
F.A.S. RTE.	SECTION	COUNTY	TOTAL SHEETS	SHEET NO.
317	(36,37) RS-2	IROQUOIS	13	11
STA. _____		TO STA. _____		
FED. ROAD DIST. NO. _____ ILLINOIS FED. AID PROJECT				

CONTRACT #66338

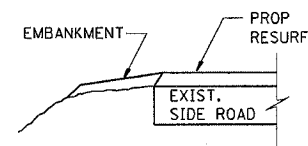


SECTION A-A
DETAILS AT ENTRANCES & SIDE ROADS

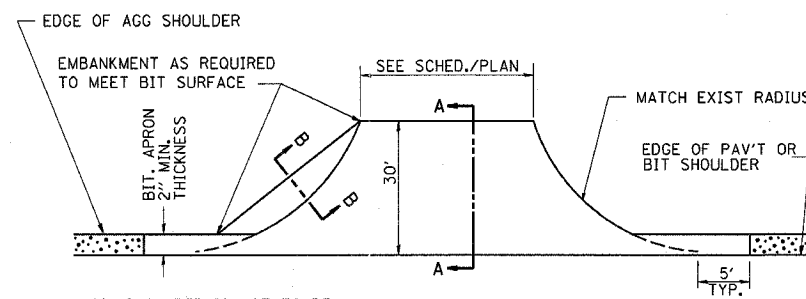
THE COST OF REMOVAL AT EXISTING BIT. OR P.C.C. LOCATIONS SHALL BE PAID FOR PER SQ. YD. BY THE APPROPRIATE PAY ITEM. REMOVAL AT EXISTING AGG. LOCATIONS SHALL BE INCIDENTAL TO THE BITUMINOUS. A-3 LOCATIONS SHALL BE FEATHER TAPERED.



DETAIL A



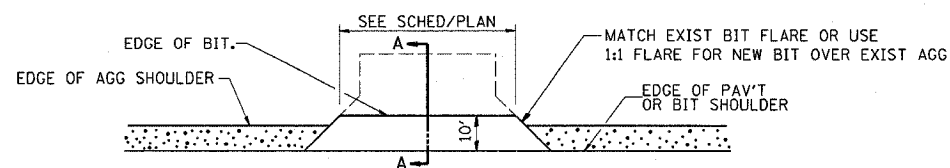
SECTION B-B



AGG. SHOULDER IS NOT TO BE PLACED AROUND SIDE ROAD RADII

PROP BIT SHLD SHALL NOT BE CONSTRUCTED THRU BIT CONC SIDEROADS.

PLAN AT SIDE ROADS

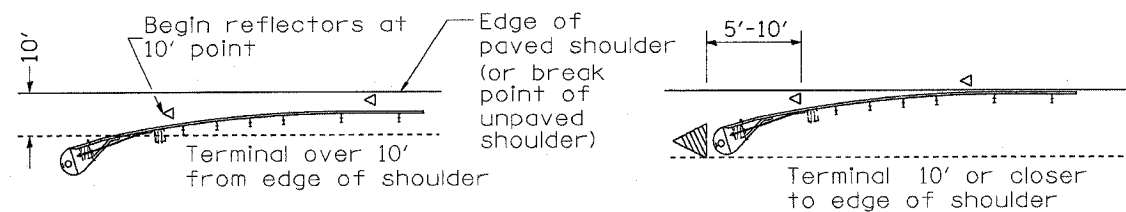


PLAN AT PRIVATE & COMMERCIAL ENTRANCES
(DO NOT RESURFACE FIELD ENTRANCES)

3/31/2005
c:\projects\ed02603\detail1.s.dgn

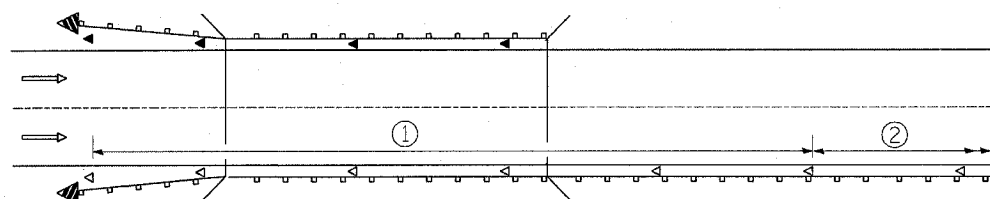
F.A.S. R.T.E.	SECTION	COUNTY	TOTAL SHEETS	SHEET NO.
317	(36,37) RS-2	IROQUOIS	13	12
STA.	TO STA.			
FED. ROAD DIST. NO.	ILLINOIS	FED. AID PROJECT		

CONTRACT #66338



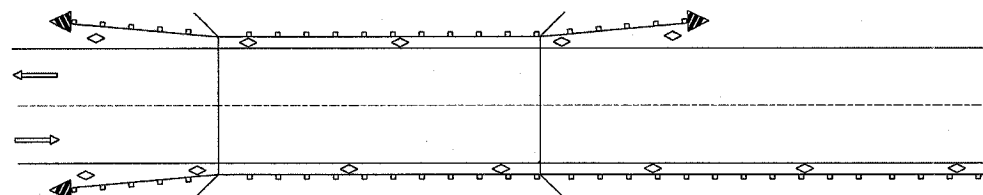
Omit terminal mark when terminal over 10' from edge of paved shoulder or break point of unpaved shoulder, or when terminal buried in blackslope.

TERMINAL MARKER PLACEMENT



- ① Spacing 80' max. for first 400' or curve spacing shown in Standard 635001, whichever is less (min. 4 reflectors regardless of length).
- ② After 400', transition to normal delineator spacing shown in Standard 635001, and continue as required.

ONE-WAY TRAFFIC

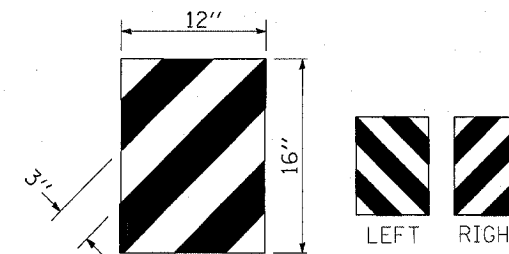


- ◁ Monodirectional silver
- ◄ Monodirectional amber
- ◇ Bidirectional silver
- ▤ Terminal Marker - Black/Yellow
Left or Right as appropriate

TWO-WAY TRAFFIC

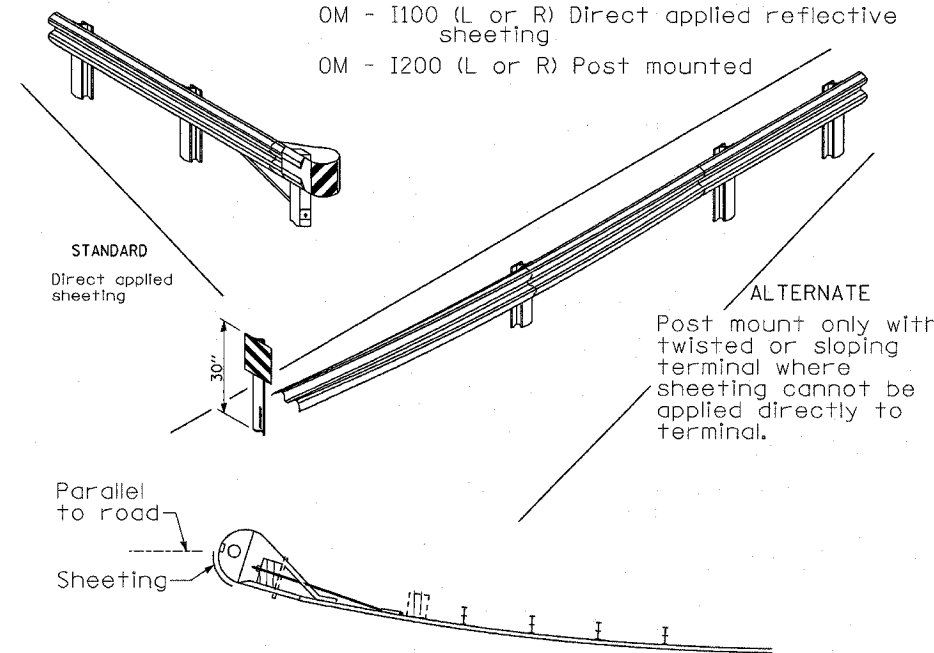
**GUARDRAIL / BARRIER WALL /
BRIDGE RAIL REFLECTORS**

**REFLECTOR AND TERMINAL
MARKER PLACEMENT**



TERMINAL MARKER DETAILS

Color: Black / Yellow reflectorized
 OM - I100 (L or R) Direct applied reflective sheeting
 OM - I200 (L or R) Post mounted



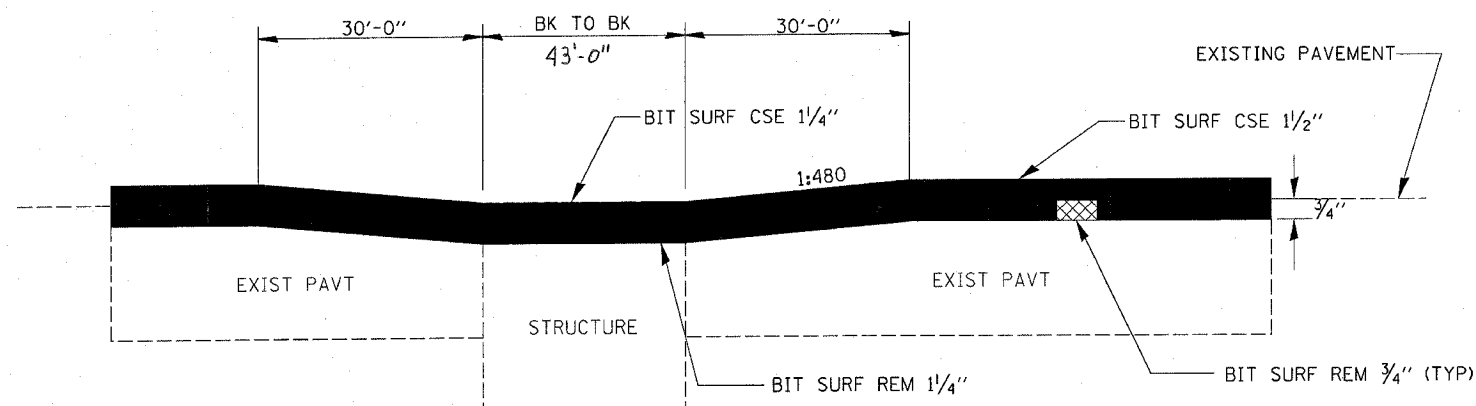
SHEETING POSITION

3/31/2005 c:\projects\ed02603\detail1.s.dgn

F.A.S. RTE.	SECTION	COUNTY	TOTAL SHEETS	SHEET NO.
317	(36,37) RS-2	IROQUOIS	13	13

STA. _____ TO STA. _____
 FED. ROAD DIST. NO. _____ ILLINOIS FED. AID PROJECT

CONTRACT #66338

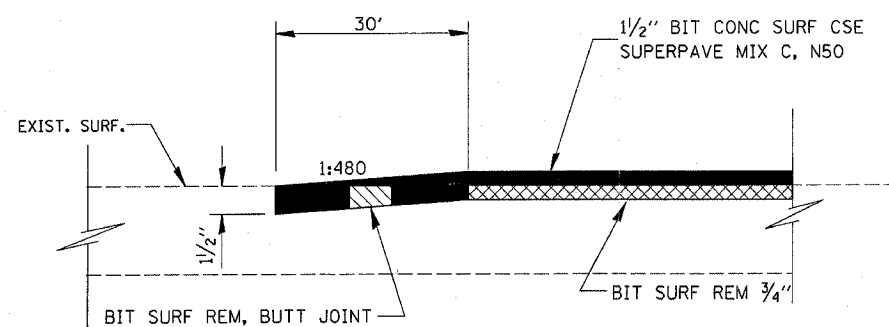


BITUMINOUS SURFACE REMOVAL TRANSITION

SN 038-0040
 STA 1250+33.8 TO 1251+63.8

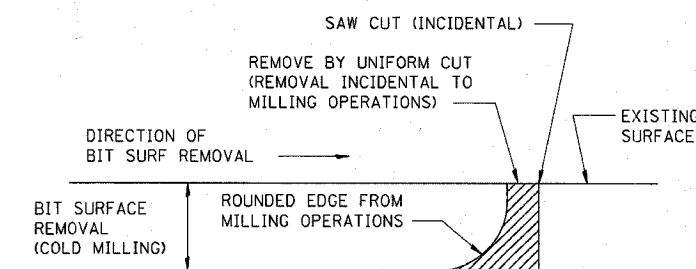
THE CONTRACTOR SHALL EXERCISE CARE NOT TO DAMAGE THE EXISTING WATERPROOFING MEMBRANE SYSTEM WHILE COMPLETING THE BITUMINOUS SURFACE REMOVAL OPERATIONS ON THE STRUCTURE. ANY DAMAGE TO THE WATERPROOFING MEMBRANE SYSTEM SHALL BE REPAIRED TO THE SATISFACTION OF THE ENGINEER AT THE CONTRACTOR'S EXPENSE.

NOTE: VARIABLE DEPTH MILLING SHALL BE PAID FOR AS BIT SURF REM 1 1/4"



BITUMINOUS SURF REM - BUTT JT

STA. 1080+27 TO STA. 1080+57
 STA. 1119+74 TO STA. 1120+04
 STA. 1120+30 TO STA. 1120+60
 STA. 1172+76 TO STA. 1173+06
 STA. 1173+54 TO STA. 1173+84
 STA. 1293+89 TO STA. 1294+19



NOTE: WHEN MILLING OPERATIONS PRODUCE A ROUNDED EDGE, THEN A SAW CUT SHALL BE USED TO MANUFACTURE A PERPENDICULAR EDGE AS SHOWN IN THE DETAIL. THE ENGINEER SHALL BE THE SOLE JUDGE CONCERNING THE USE OF THIS DETAIL.

BITUMINOUS DETAIL AT BUTT JOINTS

3/31/2005 c:\projects\ed02603\detail1.s.dgn