

CONTRACT# 66486

F.A.P. RTE.	SECTION	COUNTY	TOTAL SHEET NO.
607	126,127RS-4	KENDALL	8
ILLINOIS PROJECT			1

INDEX OF SHEETS

- 1 COVER SHEET
- 2 GENERAL NOTES
- 3 SUMMARY OF QUANTITIES
- 4 LOCATION MAP & TYPICAL SECTION
- 5 SCHEDULES
- 6 - 8 DETAILS

STATE OF ILLINOIS
DEPARTMENT OF TRANSPORTATION
DIVISION OF HIGHWAYS
PLANS FOR PROPOSED
FEDERAL AID HIGHWAY

FAP ROUTE 607 (US 52)

SECTION (126,127)RS-4

PROJECT
KENDALL COUNTY

C - 93 - 129 - 04
SMART RESURFACING & COLD MILLING
TOWNHOUSE ROAD TO IL 47

HIGHWAY STANDARDS

- 000001-04 STANDARD SYMBOLS, ABBREVIATIONS AND PATTERNS
- 701001-01 OFF-ROAD OPERATIONS 2L, 2W, MORE THAN 4.5 m (15') AWAY
- 701006-02 OFF-ROAD OPERATIONS 2L, 2W, 4.5 m (15') TO 600 mm (24") FROM PAVEMENT EDGE
- 701011-01 OFF-ROAD MOVING OPERATIONS 2L, 2W, DAY ONLY
- 701301-02 LANE CLOSURE, 2L, 2W, SHORT TIME OPERATIONS
- 701306-01 LANE CLOSURE, 2L, 2W, SLOW MOVING OPERATIONS DAY ONLY, FOR SPEEDS ≥ 45 MPH
- 701311-02 LANE CLOSURE, 2L, 2W, MOVING OPERATIONS - DAY ONLY
- 702001-05 TRAFFIC CONTROL DEVICES
- 781001-02 TYPICAL APPLICATIONS RAISED REFLECTIVE PAVEMENT MARKERS

FULL SIZE PLANS HAVE BEEN PREPARED USING STANDARD ENGINEERING SCALES, REDUCED SIZED PLANS WILL NOT CONFORM TO STANDARD SCALES, IN MAKING MEASUREMENTS ON REDUCED PLANS, THE ABOVE SCALES MAY BE USED.

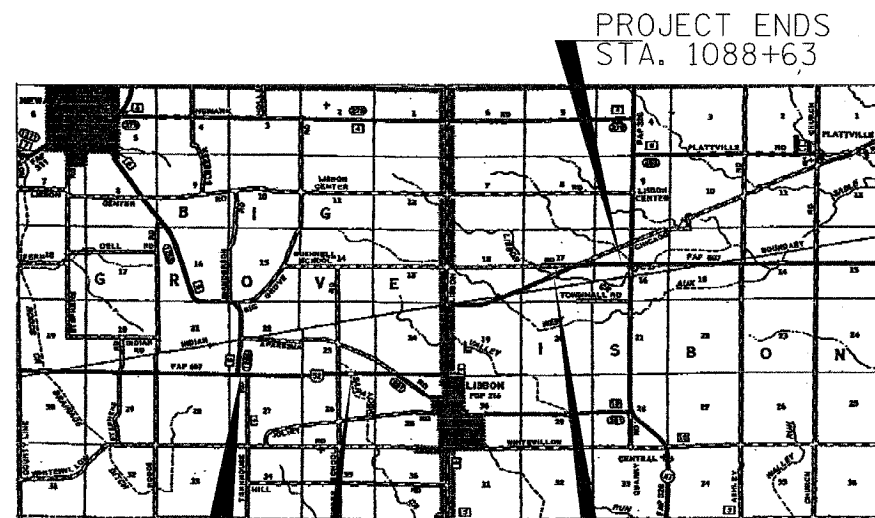
MICROFILMED _____
 REEL NUMBER _____
 AWARDED _____
 RESIDENT ENGINEER _____
 AS BUILT CHANGES WERE MADE
 ON THE FOLLOWING SHEETS _____

JULIE 1-800-892-0123

DISTRICT 3 NO. (815) 434-6131

PROJECT ENGINEER: RICK POWELL
 UNIT CHIEF: BRAD DUNCAN
 TOWNSHIP: BIG GROVE, LISBON

CONTRACT NO. 66486



PROJECT BEGINS
STA. 760+60

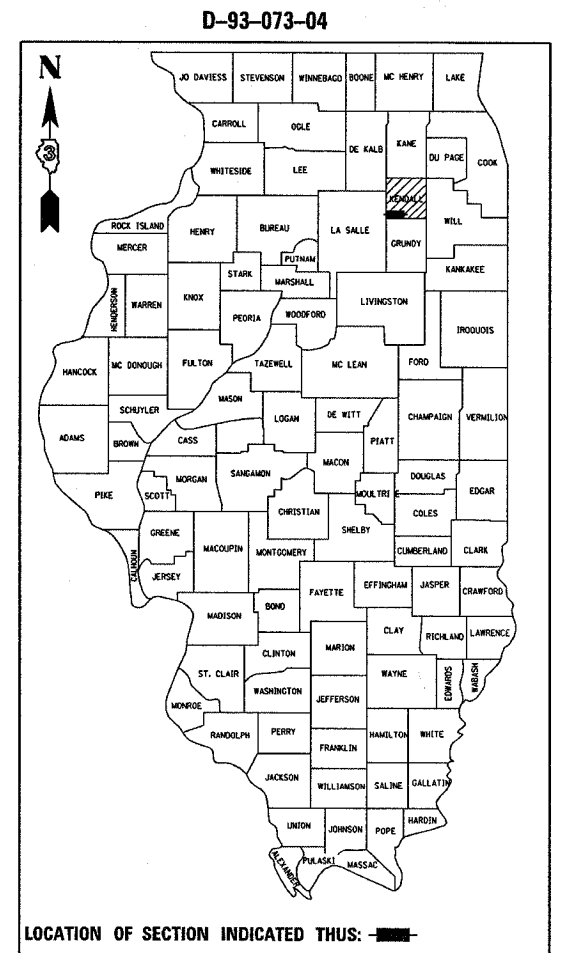
OMISSION
SN 047-0037
STA. 840+96 TO
STA. 841+18

OMISSION
SN 047-0014
STA. 1037+78 TO
STA. 1038+62

STATION EQUATION:
STA. 964+25+88BK = STA. 963+16.53AH

LOCATION MAP
NOT TO SCALE

GROSS LENGTH = 32912 FT. = 6.23 MI.
NET LENGTH = 32806 FT. = 6.21 MI.



LOCATION OF SECTION INDICATED THUS: [shaded area]

FUNCTION CLASSIFICATION
MINOR ARTERIAL (RURAL)

2003 ADT = 1950

P.V. = 88.7% S.U. = 3.8% M.U. = 7.5%

STATE OF ILLINOIS
DEPARTMENT OF TRANSPORTATION
DIVISION OF HIGHWAYS

SUBMITTED April 12 2005
Debra Moutz
 DEPUTY DIRECTOR OF HIGHWAYS, REGION ENGINEER
Mike Hene
 ENGINEER OF DESIGN AND ENVIRONMENT
Victor Maden
 DIRECTOR OF HIGHWAYS, CHIEF ENGINEER

PRINTED BY THE AUTHORITY
OF THE STATE OF ILLINOIS

4/11/2005
C:\p\projects\6607304\GIS\shps.dgn

GENERAL NOTES

F. A. P. NO.	SECTION	COUNTY	TOTAL SHEETS	SHEET NO.
607	(126,127)RS-4	KENDALL	8	2
STA.	TO STA.			
FED. ROAD DIST. NO.	ALLIANCE	FED. AID PROJECT		

CONTRACT# 66486

THE THICKNESS OF BITUMINOUS MIXTURES SHOWN ON THE PLANS IS THE NOMINAL THICKNESS. DEVIATIONS FROM THE NOMINAL THICKNESS WILL BE PERMITTED WHEN SUCH DEVIATIONS OCCUR DUE TO IRREGULARITIES IN THE EXISTING SURFACE OR BASE ON WHICH THE BITUMINOUS MIXTURE IS PLACED.

THE BITUMINOUS SURFACE OF ALL MAILBOX TURNOUTS, PRIVATE ENTRANCES, COMMERCIAL ENTRANCES, AND SIDE ROADS SHALL BE MADE NEATLY, IN A WORKMANLIKE MANNER, AND SHALL ACCURATELY CONFORM TO THE SHAPES AND DIMENSIONS SHOWN ON THE PLAN DETAILS. IF REQUIRED BY THE ENGINEER, THE CONTRACTOR SHALL BE REQUIRED TO SAW CUT THE BITUMINOUS SURFACE TO CONFORM TO THE SHAPES AND DIMENSIONS SHOWN ON THE PLAN DETAILS. THIS WORK SHALL BE INCLUDED IN THE COST OF THE BITUMINOUS SURFACE

AGGREGATE (PRIME COAT): FA 20 MAY BE USED IN ADDITION TO THE GRADATIONS LISTED IN THE 3RD PARAGRAPH OF ARTICLE 1003.03(c) OF THE STANDARD SPECIFICATIONS.

THE ENGINEER WILL BE THE SOLE JUDGE CONCERNING CURING TIME FOR THE VARIOUS BITUMINOUS LIFTS.

ON EXISTING PAVEMENT WHICH MAY BE SUPERELEVATED, THE NEW BITUMINOUS PAVEMENT SHALL BE BUILT WITH THE SAME SUPERELEVATION UNLESS NEW SUPERELEVATION RATES ARE GIVEN ON THE PLANS.

ANY REFERENCE TO A STANDARD IN THESE PLANS SHALL BE INTERPRETED TO MEAN THE EDITION AS INDICATED BY THE SUBNUMBER LISTED ON THE INDEX OF SHEETS OR THE COPY OF THE STANDARD INCLUDED IN THESE PLANS.

THE FOLLOWING RATES OF APPLICATION HAVE BEEN USED IN CALCULATING PLAN QUANTITIES:

GRANULAR MATERIALS	2.05	TONS / CU YD
BITUMINOUS MAT PRIME COAT	0.08	GAL / SQ YD OR
	0.375	GAL / SQ YD
AGGREGATE PRIME COAT	0.002	TONS / SQ YD
BITUMINOUS RESURFACING	112	LBS / SQ YD / IN
SHORT TERM PAVEMENT MARKING	10	FT /100 FT OF APPLICATION
MIX FOR CRACKS, JTS & FLGWYS	0.0003	TONS / SQ YD
LEVEL BINDER (HAND METHOD)	0.0005	TONS / SQ YD

THE EXISTING SHOULDERS ARE LOW. IN THE EVENT THAT CONSTRUCTION OPERATIONS RESULT IN A DROP OFF GREATER THAN 3" BETWEEN THE EDGE OF PAVEMENT OR EDGE OF SHOULDER WITHIN 3' OF THE EDGE OF PAVEMENT AND THE EARTH OR AGGREGATE SHOULDERS, THEN THE DROP OFF SHALL BE PROTECTED ACCORDING TO ARTICLE 701.04(B)(1) OF THE STANDARD SPECIFICATIONS. THIS WORK WILL BE CONSIDERED AS INCLUDED IN THE CONTRACT UNIT PRICES FOR TRAFFIC CONTROL.

THE CONTRACTOR SHALL CONTACT JULIE AT LEAST 48 HOURS PRIOR TO EXCAVATION TO DETERMINE WHICH UTILITIES ARE IN THE AREA.

BEFORE ORDERING PIPE CULVERTS AND PIPE DRAINS, THE CONTRACTOR SHALL CONSULT THE ENGINEER FOR EXACT LENGTHS.

STATE OF ILLINOIS
DEPARTMENT OF TRANSPORTATION
DISTRICT THREE

PREPARED BY: [Signature]
DISTRICT PROGRAM DEVELOPMENT ENGINEER

DATE: 4/11/05

EXAMINED BY: [Signature]
DISTRICT CONSTRUCTION ENGINEER

[Signature]
DISTRICT MATERIALS ENGINEER

[Signature]
DISTRICT OPERATIONS ENGINEER

REVISIONS	
NAME	DATE

ILLINOIS DEPARTMENT OF TRANSPORTATION

GENERAL NOTES

4/17/2005
c:\pco\lects\ed07304\q1187ns.dgn

F.A.P. RTE.	SECTION	COUNTY	TOTAL SHEETS	SHEET NO.
607	126,127RS-4	KENDALL	8	3
STA.		TO STA.		
FED. ROAD DIST. NO.		ILLINOIS FED. AID PROJECT		

SUMMARY OF QUANTITIES

CODE NO.	CONSTRUCTION CODE	ITEM	TYPE:	1000
				TOTAL QUANTITY
20400800	FURNISHED EXCAVATION			CU YD 16
21400100	GRADING AND SHAPING DITCHES			FOOT 40
25100630	EROSION CONTROL BLANKET			SQ YD 60
40600100	BITUMINOUS MATERIALS (PRIME COAT)			GALLON 7208
40600300	AGGREGATE (PRIME COAT)			TON 178
40600400	MIXTURE FOR CRACKS, JOINTS, AND FLANGEWAYS			TON 26
40600895	CONSTRUCTING TEST STRIP			EACH 1
40600980	BITUMINOUS SURFACE REMOVAL - BUTT JOINT			SQ YD 960
40600990	TEMPORARY RAMP			SQ YD 93
44000003	BITUMINOUS SURFACE REMOVAL 3/4"			SQ YD 87855
44000030	BITUMINOUS SURFACE REMOVAL (VARIABLE DEPTH)			SQ YD 1220
48101200	AGGREGATE SHOULDERS, TYPE B			TON 1714
50104300	CONCRETE HEADWALL REMOVAL			CU YD 0.4
50800105	REINFORCEMENT BARS			POUND 30
54002020	EXPANSION BOLTS 3/4 INCH			EACH 8
542D0220	PIPE CULVERTS, CLASS D, TYPE 1 15"			FOOT 11
54213450	END SECTIONS 15"			EACH 3
54248510	CONCRETE COLLAR			CU YD 0.2
67000400	ENGINEER'S FIELD OFFICE, TYPE A			CAL MO 3
67100100	MOBILIZATION			L SUM 1
70100460	TRAFFIC CONTROL AND PROTECTION, STANDARD 701306			L SUM 1
70300100	SHORT-TERM PAVEMENT MARKING			FOOT 6582
70301000	WORK ZONE PAVEMENT MARKING REMOVAL			SQ FT 1097
* 78001110	PAINT PAVEMENT MARKING - LINE 4"			FOOT 80798
* 78001130	PAINT PAVEMENT MARKING - LINE 6"			FOOT 7440
* 78100100	RAISED REFLECTIVE PAVEMENT MARKER			EACH 447
78300200	RAISED REFLECTIVE PAVEMENT MARKER REMOVAL			EACH 447
X4066414	BITUMINOUS CONCRETE SURFACE COURSE, SUPERPAVE, MIX "C", N50			TON 7520
X4066735	LEVELING BINDER (HAND METHOD), SUPERPAVE N50			TON 44
X4080020	INCIDENTAL BITUMINOUS SURFACING, SUPERPAVE, N50			TON 171

* SPECIALTY ITEMS

REVISIONS	
NAME	DATE

ILLINOIS DEPARTMENT OF TRANSPORTATION

SUMMARY OF QUANTITIES

SCALE: VERT. DATE
HORIZ.

DRAWN BY
CHECKED BY

F.A.P. RTE.	SECTION	COUNTY	TOTAL SHEETS	SHEET NO.
607	(126.127)RS-4	KENDALL	8	5
STA.		TO STA.		
FED. ROAD DIST. NO.		ILLINOIS	FED. AID PROJECT	

MAINLINE							
STATIONS	MIX FOR CRKS, JTS FLANGE	LEV BIND (HM) N50	BIT MAT PRIME COAT	AGG PR CT	BIT CONC SURF SUPER "C", N50	AGG SHLDS TYPE B	TEMP RAMP
	TON	TON	GALLON	TON	TON	TON	SQ YD
760+60 - 840+96	6.43	10.71	1714.3	42.9	1854.0	419.8	13.4
840+96 - 841+18	SN 047+0037						
841+18 - 964+25.88BK	10.06	16.77	2683.0	67.1	2901.6	642.9	6.7
963+16.53AH - 1037+78	5.97	9.95	1591.8	39.8	1721.5	389.8	6.7
1037+78 - 1038+62	SN 047+0014						
1038+62 - 1088+63	4.00	6.67	1066.9	26.7	1153.8	261.2	13.4
TOTALS	26	44	7056	176	7631	1714	40

PAVEMENT MARKING				
LOCATION	PAINT PAVT MK LINE 4"		PAINT PAVT MK LINE 6"	RAISED REFL PVT MARK
	WHITE FOOT	YELLOW FOOT	YELLOW FOOT	EACH
STA. TO STA.				
760+60 - 1088+63			7440	447
CENTERLINE				
EDGELINES	65824			
NO PASSING ZONES		14974		
TOTALS	65824	14974	7440	447

MILLING		
LOCATION	BITUMINOUS SURFACE REMOVAL	
	3/4"	BUTT JT
STA. TO STA.	SQ YD	SQ YD
760+60 - 761+20		160
761+20 - 840+36	21109	
840+36 - 840+96		160
SN 047-0037		
841+18 - 841+78		160
841+78 - 964+25.88BK	33377	
963+16.53AH - 1037+18	19737	
1037+18 - 1037+78		160
SN 047-0014		
1038+62 - 1039+22		160
1039+22 - 1088+03	13016	
1088+03 - 1088+63		160
TOTALS	87239	960

SIDEROADS AND ENTRANCES							
STATION	NUMBER	BIT MATLS PR CT	AGG PR CT	INC BIT SURF SUPER	BIT SURF REMOVAL 3/4"	TEMP RAMP	BIT SURF REMOVAL VAR DEPTH
		GALLON	TON	TON	SQ YD	SQ YD	SQ YD
COMMERCIAL ENTRANCES	2	10		15			120
PRIVATE ENTRANCES	17	44		40	336		140
MAILBOX TURNOUTS	10	22		35	280		
SIDEROADS	8	77	1.9	81		53	960
TOTALS		152	1.9	171	616	53	1220

DRAINAGE TABLE									
LOCATION	PIPE CULV TYPE 1 CL D 15"	END SECTIONS 15"	CONCRETE COLLAR	REINF BARS	EXP BOLTS 3/4'	GRADE AND SHAPE DITCH	CONCRETE HEADWALL REMOVAL	FURN EXC	EROSION CONTROL BLANKET (SEE NOTE)
	FOOT	EACH	CU YD	POUND	EACH	FOOT	CU YD	CU YD	SQ YD
APAKESHA ROAD									
SOUTHEAST QUAD	5	1	0.2	30	8	20	0.2	3	12
TOWNHOUSE ROAD									
SOUTHEAST QUAD	3	1				10	0.1	1.5	8
SOUTHWEST QUAD	3	1				10	0.1	1.5	8
TOTALS	11	3	0.2	30	8	40	0.4	6	28

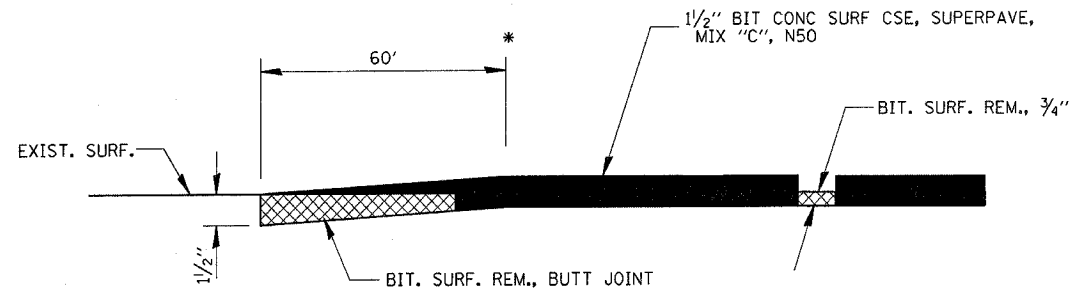
NOTE: SEEDING, CLASS 2 SHALL BE PLACED IN THE AREAS OF THE EROSION CONTROL BLANKET. INCLUDED IN THE COST OF EROSION CONTROL BLANKET.

REVISIONS	
NAME	DATE

ILLINOIS DEPARTMENT OF TRANSPORTATION
SCHEDULE OF QUANTITIES
 SCALE: VERT. _____
 HORIZ. _____
 DATE _____
 DRAWN BY _____
 CHECKED BY _____

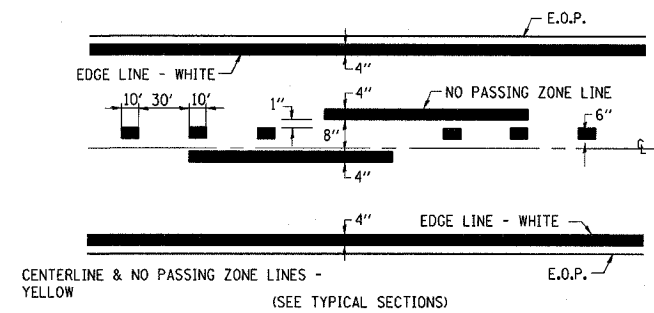
4/11/2005 9:42:00 AM c:\projects\66486\07304\1\lshs.dgn

F.A.P. RTE.	SECTION	COUNTY	TOTAL SHEETS	SHEET NO.
607	(126,127)RS-4	KENDALL	8	6
STA.		TO STA.		
FED. ROAD DIST. NO.		ILLINOIS	FED. AID PROJECT	

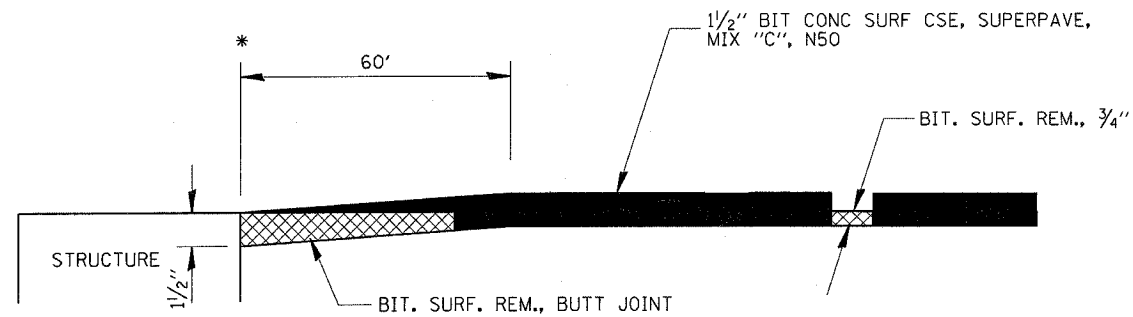


BEGINNING & ENDING TAPERS

* STA. 761+20 (EX PAVT JT @ STA. 760+60)
 STA. 1088+03 (TAPER ENDS @ LIMITS OF
 IL 47 PAINTED MEDIAN)

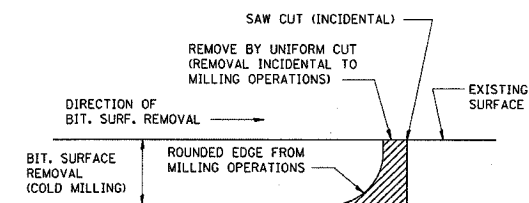


PAVEMENT MARKING



TAPERS @ STRUCTURE OMISSIONS

SN 047-0037 *STA. 840+96-STA. 841+18
 SN 047-0014 *STA. 1037+78-STA. 1038+62



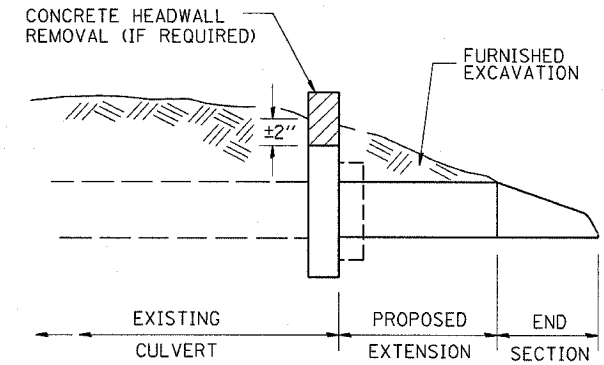
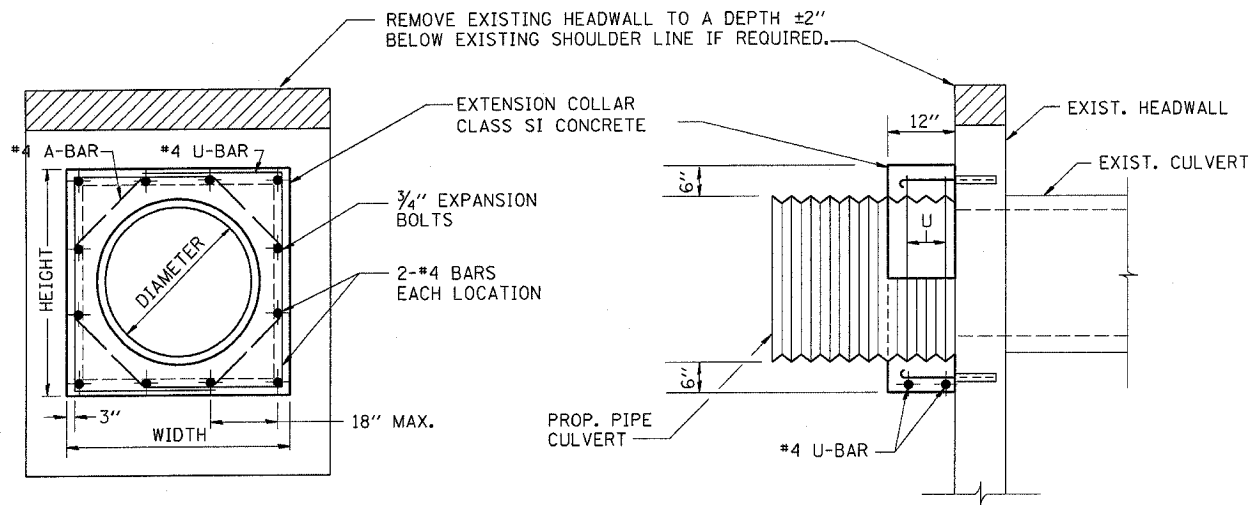
NOTE: WHEN MILLING OPERATIONS PRODUCE A ROUNDED EDGE, THEN A SAW CUT SHALL BE USED TO MANUFACTURE A PERPENDICULAR EDGE AS SHOWN IN THE DETAIL. THE ENGINEER SHALL BE THE SOLE JUDGE CONCERNING THE USE OF THIS DETAIL

BITUMINOUS DETAIL AT BUTT JOINTS

REVISIONS		ILLINOIS DEPARTMENT OF TRANSPORTATION
NAME	DATE	
		DETAILS

SCALE: VERT. _____
 HORIZ. _____
 DATE _____ DRAWN BY _____
 CHECKED BY _____

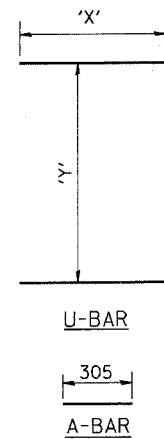
F.A.P. RTE.	SECTION	COUNTY	TOTAL SHEETS	SHEET NO.
607	(126,127)RS-4	KENDALL	8	7
STA.	TO STA.			
FED. ROAD DIST. NO.	ILLINOIS	FED. AID PROJECT		



SECTION A-A

PLAN AT CULVERT EXTENSIONS

EXPANSION BOLTS SHALL CONSIST OF SELF DRILLING EXPANSION SHIELDS AND 3/4" DIA. HOOKED BOLTS. HOOKED BOLTS SHALL EXTEND A MINIMUM OF 9" INTO NEW CONCRETE.
MINIMUM CERTIFIED PROOF LOAD = 4,080 LBS.



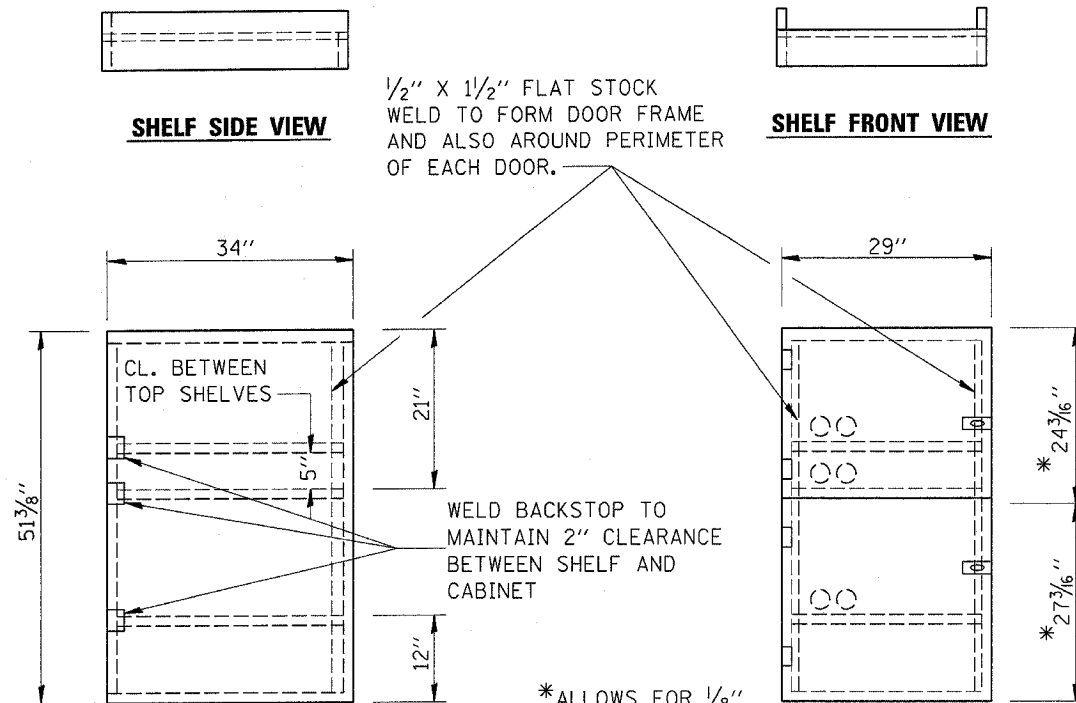
LOCATION	EXISTING CULVERT SIZE	PIPE DIMENSION	PIPE AREA	EXTENSION COLLAR		A-BAR			U-BAR		CLASS SI CONC. COLLAR	REINFORCEMENT BARS	3/4" DIA. EXPANSION BOLTS
				WIDTH	HEIGHT	305	'X'	'Y'					
				IN.	IN.	IN.	IN.	IN.	CU. YD.	POUND			
APAKESHA ROAD SOUTHEAST QUAD	15	15	1.23	28	28	12	15	22	0.2	30	8		

COLLAR DETAIL

REVISIONS		ILLINOIS DEPARTMENT OF TRANSPORTATION
NAME	DATE	
SCALE: VERT. DATE	HORIZ.	DRAWN BY CHECKED BY

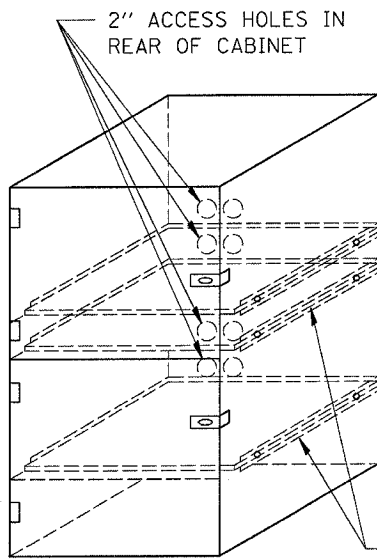
DETAILS

F.A.P. RTE.	SECTION	COUNTY	TOTAL SHEETS	SHEET NO.
607	(126,127)RS-4	KENDALL	8	8
STA.	TO STA.			
FED. ROAD DIST. NO.	ILLINOIS FED. AID PROJECT			



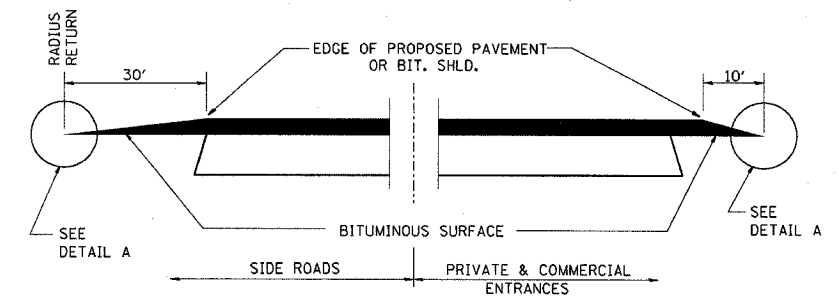
*ALLOWS FOR 1/8" CLEARANCE AT TOP AND BOTTOM OF CABINET AND BETWEEN DOORS.

- NOTES:
1. USE 16 GAUGE STEEL FOR CABINET.
 2. THE TOP SHELF SHALL SLIDE IN OR OUT WITH THE TOP DOOR OPEN.
 3. ALL HINGES AND HASPS WILL BE WELDED TO THE CABINET.
 4. ALL EDGES SHALL BE GROUND SMOOTH.
 5. TWO (2" DIA.) ACCESS HOLES WILL BE REQUIRED FOR EACH SHELF.
 6. CABINET SHALL BE PAINTED WITH TWO COATS OF FLAT PAINT.
 7. 2 EACH MATCHING KEY PADLOCKS, WITH 3 KEYS PROVIDED, MASTER MODEL 3 T OR EQUIVALENT.
 8. 4 EACH PLAIN STEEL, NON-REMOVABLE PIN, NO HOLE 4"X4" SQUARE CORNER HINGES TO BE WELDED ON.
 9. 2 EACH EXTRA HEAVY, PLAIN STEEL, FIXED STAPLE, NO HOLE, 7 1/4" HASPS TO BE WELDED ON.

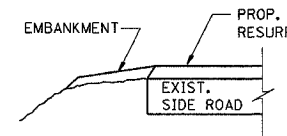


FLAT STOCK DIMENSIONS VARY DEPENDING ON TYPE OF ROLLER ASSEMBLY.

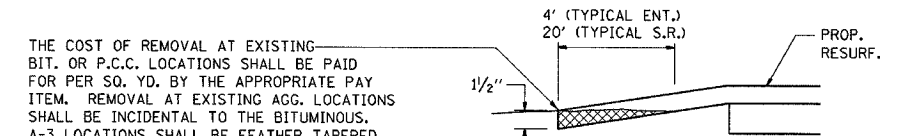
LOCKABLE COMPUTER CABINET



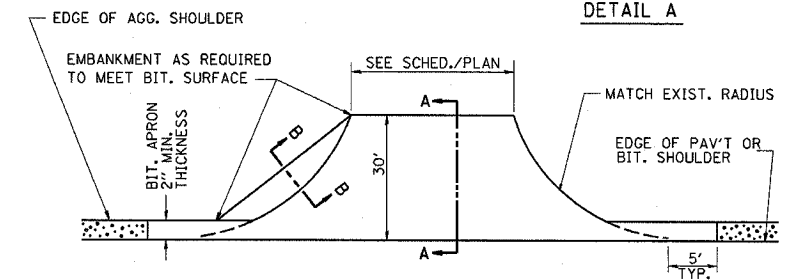
SECTION A-A
DETAILS AT ENTRANCES & SIDE ROADS



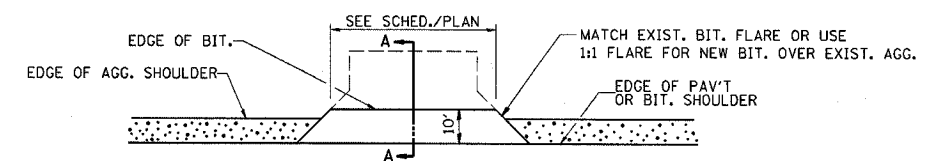
SECTION B-B



DETAIL A



PLAN AT SIDE ROADS



PLAN AT PRIVATE & COMMERCIAL ENTRANCES
(DO NOT RESURFACE FIELD ENTRANCES)

REVISIONS	
NAME	DATE

ILLINOIS DEPARTMENT OF TRANSPORTATION

DETAILS

SCALE: VERT. DATE
HORIZ. DRAWN BY
CHECKED BY